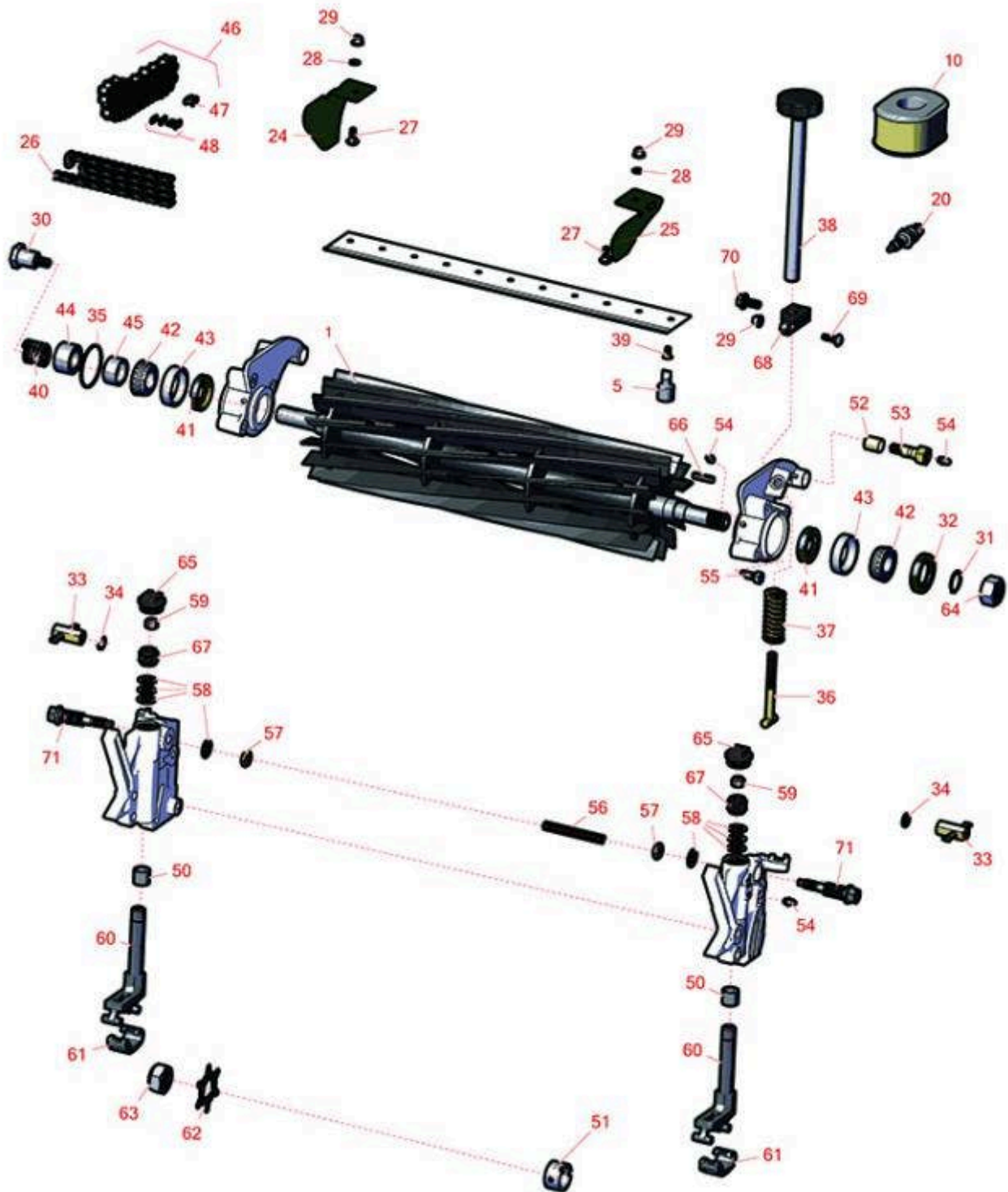




# Replaces John Deere 180SL Walk-Behind Greens Mower Parts

Cutting Unit  
Reel & Bedknife



All original equipment manufacturers names and part numbers are used for identification purposes only, and we are in no way implying that our products are original equipment parts. Prices subject to change without notice.



# Replaces John Deere 180SL Walk-Behind Greens Mower Parts

Cutting Unit  
Reel & Bedknife



Item No	R&R Part No.	OEM Part No.	Description	Qty Req	Order Quantity
---------	--------------	--------------	-------------	---------	----------------

## R&R Reels, Lifetime Guaranteed

1	RAMT2715	AMT2904	Reel - 11 Blade 18in	1	
---	----------	---------	----------------------	---	--

*Detail Description: R&R Reel blades are expertly crafted from premium high carbon-boron alloy steel, heat-treated to perfectly complement both R&R and OEM bedknives. Each reel undergoes precision cylindrical grinding on bearing surfaces, followed by relief grinding for optimal performance. Advanced computer balancing ensures extended reel and bearing life. Backed by our lifetime guarantee against defects in materials and craftsmanship under normal use, R&R Reels deliver unmatched durability and cutting precision you can trust.:*

## Service Tools

5	R101278T		Bedknife Screw Driver Tool	1	
---	----------	--	----------------------------	---	--

*Tech Note: Easily install and remove bed knife screws with the help of a ratchet. Tool manufactured with hardened alloy steel.:*

*Detail Description: Easily install and remove bed knife screws with the help of a ratchet. Tool manufactured with hardened alloy steel.:*

## Filters

10	RHE17210-ZE0-505	MIU11464	Honda Element - Air Cleaner	1	
----	------------------	----------	-----------------------------	---	--

## Electrical, Gauges & Controls

20	RN7131	M128206	NGK Spark Plug - BPR6ES	1	
----	--------	---------	-------------------------	---	--

## Other Parts Available

24	RTC29522	TCU29522	Grass Deflector	1	
----	----------	----------	-----------------	---	--

25	RTC29523	TCU29523	Grass Deflector	1	
----	----------	----------	-----------------	---	--

26	RTCA16596	TCA16596	Roller Chain #35	1	
----	-----------	----------	------------------	---	--

27	R03M7221	03M7221	Bolt - Carriage M6 x 16	2	
----	----------	---------	-------------------------	---	--

28	R24M7139	24M7139	Washer - Flat 6mm	2	
----	----------	---------	-------------------	---	--

29	R14M7397	14M7397, 14M7463	Locknut - 6mm x 1.0 ESNA Flanged	4	
----	----------	---------------------	----------------------------------	---	--

All original equipment manufacturers names and part numbers are used for identification purposes only, and we are in no way implying that our products are original equipment parts. Prices subject to change without notice.



# Replaces John Deere 180SL Walk-Behind Greens Mower Parts

*Cutting Unit  
Reel & Bedknife*



Item No	R&R Part No.	OEM Part No.	Description	Qty Req	Order Quantity
30	RET11367	ET11367	Cap Screw - Special	1	
31	R40M7080	40M7080, ET11059	Ring - Snap	1	
32	RET11073	ET11073	Seal - Reel Outer	1	
33	RET11356	ET11356	Nut - Adjusting	2	
34	R24M7036	24M7036	Washer - Flat 8mm Zinc	2	
35	RM44162	M44162	O-Ring - Reel	1	
36	RET11372	ET11372	Bolt - Adjusting Bed Bar	2	
37	RET11070	ET11070	Spring - Bed Bar	2	
38	RAMT2798	AMT2798	Handle - Adjuster	2	
39	R101278	21M7194	Screw - Bedknife	11	
40	RET11053	ET11053	Spring - Reel	1	
41	RMT1160	MT1160	Seal - Reel	2	
42	RAMT1108	AMT1108	Tapered Bearing Cone	2	
43	RMT2108	MT2108	Tapered Bearing Cup	2	
44	RET11464	ET11464	Spacer	1	
45	RET11368	ET11368	Spacer	1	
46	RTCA16595	TCA16595	Chain - Rear Roller	1	
47	RSW35OLUS	SW35OLUS	Chain Link - Offset #35	1	
48	RSW35COUS	SW35COUS	Chain Link - Coupler #35	1	
50	RMT74	MT74	Bushing - Roller Bkt	2	
51	RET14917	ET14917	Spacer	1	

All original equipment manufacturers names and part numbers are used for identification purposes only, and we are in no way implying that our products are original equipment parts. Prices subject to change without notice.



# Replaces John Deere 180SL Walk-Behind Greens Mower Parts

Cutting Unit  
Reel & Bedknife



Item No	R&R Part No.	OEM Part No.	Description	Qty Req	Order Quantity
52	RP44946	P44946	Bushing - Bronze	2	
53	RET11371	ET11371	Screw - Special	2	
54	R302-5	JD7797, JD7842, JD7844	Fitting - Grease	6	
55	R19M7881	19M7881	Bolt - Hex HD M8-1.25 x 20	6	
56	RTC25398	TCU25398	Compression Spring	1	
57	R14M7152	14M7152	Nut - 10mm x 1.5 Jam	2	
58	RET16679	ET16679	Washer - Spring	8	
59	RM148268	M148268	Lock Nut	2	
60	RAUC13515	AUC13515	Adjuster	2	
61	RUC16110	UC16110	Clamp	2	
62	RET14707	ET14707	Verti-Cut Blade - .025 x 2.375	57	
62	RET14707C		Verti-Cut Blade - .025 x 2.375 Carbide Tipped	57	
63	RN198341	N198341	Nut - Nyloc 7/8-14	1	
64	R14M7306	14M7306	Nut - M20-1.5	1	
65	RUC16102	TCU24949, UC16102	Cap	2	
66	R49M7049	49M7049	Key - 5mm x 22mm	1	
67	RTC40491	TCU24683, TCU40491	Worm Gear	2	
68	RUC16469	MT6952, UC16469	Clamp	2	
69	R03M7222	03M7222	Bolt - Carriage M6-1.0 x 20	2	

All original equipment manufacturers names and part numbers are used for identification purposes only, and we are in no way implying that our products are original equipment parts. Prices subject to change without notice.



# Replaces John Deere 180SL Walk-Behind Greens Mower Parts

*Cutting Unit  
Reel & Bedknife*



Item No	R&R Part No.	OEM Part No.	Description	Qty Req	Order Quantity
70	<b>R19M7866</b>	19M7866	Bolt - Flanged Hex M8-1.25 x 20	2	
71	<b>RTC26458</b>	TCU26458	Worm Gear	2	

All original equipment manufacturers names and part numbers are used for identification purposes only, and we are in no way implying that our products are original equipment parts. Prices subject to change without notice.