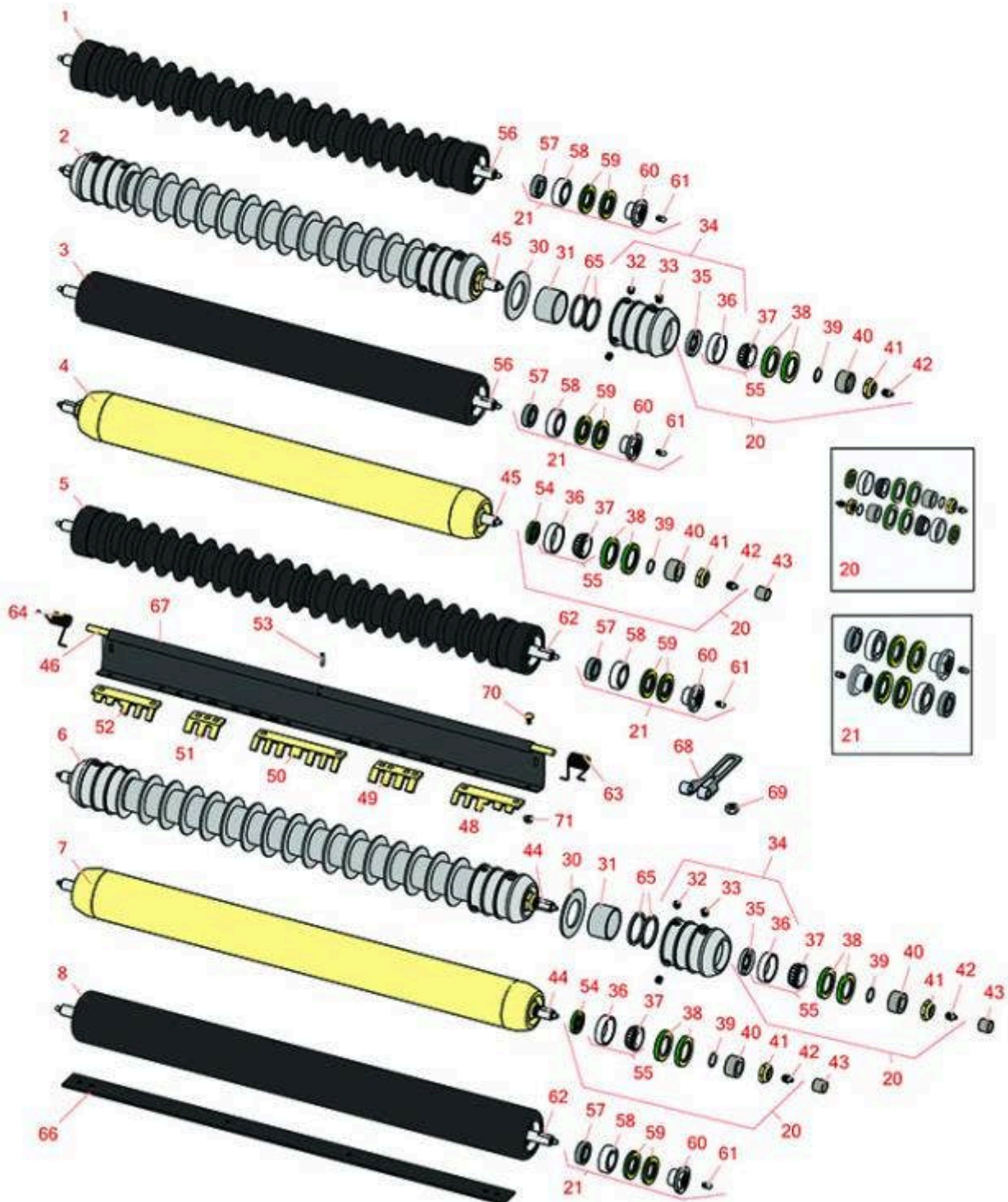




# Replaces John Deere 7200A Reel Mower

## Parts

30in Cutting Unit  
Rollers



All original equipment manufacturers names and part numbers are used for identification purposes only, and we are in no way implying that our products are original equipment parts. Prices subject to change without notice.



# Replaces John Deere 7200A Reel Mower

## Parts

30in Cutting Unit  
Rollers



Item No	R&R Part No.	OEM Part No.	Description	Qty Req	Order Quantity
---------	--------------	--------------	-------------	---------	----------------

### R&R Rollers

1	<b>R1203830</b>		Roller - Fusion Grooved UHMW Polyethylene - 26 in	1	
---	-----------------	--	---	---	--

*Tech Note: Fusion Rollers combine the best features of our UHMW plastic rollers with a heavy-duty internal bearing system. Machined from solid UHMW plastic that prevents build-up of debris. This roller has a patented deep groove design and ... <Click Part# for more>:*

2	<b>R500509</b>	AMT2968, BM25318	Roller - Grooved Repairable Steel - 26	1	
---	----------------	---------------------	--	---	--

*Tech Note: Constructed with a through shaft and greasable ball bearings. This roller can be repaired by unscrewing the ends and replacing the series of washers and spacers.:*

3	<b>R1203835</b>		Roller - Fusion Smooth UHMW Polyethylene - 26 in	1	
---	-----------------	--	--	---	--

*Tech Note: Fusion Rollers combine the best features of our UHMW plastic rollers with a heavy-duty internal bearing system. Machined from solid UHMW plastic that prevents build-up of debris. This roller turns on precision stainless ball bear... <Click Part# for more>:*

4	<b>RAET11265</b>	AMT2969	Roller - Smooth Heavy Duty Tubular Steel - 26	1	
---	------------------	---------	---	---	--

*Tech Note: Constructed with a through shaft, this heavy-duty roller uses tapered bearings for extended life.:*

5	<b>R1203840</b>		Roller - Fusion Grooved UHMW Polyethylene - 30 in	1	
---	-----------------	--	---	---	--

*Tech Note: Fusion Rollers combine the best features of our UHMW plastic rollers with a heavy-duty internal bearing system. Machined from solid UHMW plastic that prevents build-up of debris. This roller has a patented deep groove design and ... <Click Part# for more>:*

6	<b>R500514</b>	AMT2977, BM25319	Roller - Grooved Repairable Steel - 30	1	
---	----------------	---------------------	--	---	--

*Tech Note: Constructed with a through shaft and greasable ball bearings. This roller can be repaired by unscrewing the ends and replacing the series of washers and spacers.:*

7	<b>RAMT1056</b>	AMT2976	Roller - Smooth Heavy Duty Tubular Steel - 30	1	
---	-----------------	---------	---	---	--

All original equipment manufacturers names and part numbers are used for identification purposes only, and we are in no way implying that our products are original equipment parts. Prices subject to change without notice.



# Replaces John Deere 7200A Reel Mower

## Parts

30in Cutting Unit  
Rollers



Item No	R&R Part No.	OEM Part No.	Description	Qty Req	Order Quantity
---------	--------------	--------------	-------------	---------	----------------

*Tech Note: Constructed with a through shaft, this heavy duty roller uses tapered bearings for extended life.:*

8	<b>R1203845</b>		Roller - Fusion Smooth UHMW Polyethylene - 30 in	1	
---	-----------------	--	--	---	--

*Tech Note: Fusion Rollers combine the best features of our UHMW plastic rollers with a heavy-duty internal bearing system. Machined from solid UHMW plastic that prevents build-up of debris. This roller turns on precision stainless ball bear... <Click Part# for more>:*

### Overhaul Kits

20	<b>RAET10632</b>	AET10632	Overhaul Kit - Roller	1	
----	------------------	----------	-----------------------	---	--

*Tech Note: Includes 4 ea: RET15755 Seal; 2 ea: R237-54 O-Ring, R253-122 Seal, R254-78 Bearing, R254-79 Cup, R3296-15 Locknut, R471219 Grease Zerk, RET15726 Sleeve, RET15756 Seal:*

21	<b>R114-5430</b>		Overhaul Kit - Roller	1	
----	------------------	--	-----------------------	---	--

*Tech Note: Includes 4 ea.: R112-7494 Seals; 2 ea.: R302-5 Grease Zerks, R114-3717 Seals, R112-5290 Bearings & R114-3745 Locknuts:*

### Other Parts Available

30	<b>R150673</b>		Washer - 3 Repairable Roller	17	
----	----------------	--	------------------------------	----	--

31	<b>R150676</b>		Spacer - 2-3/4 Dia x 1-1/4 L	16	
----	----------------	--	------------------------------	----	--

32	<b>R150691</b>		Screw - Set Nyloc 3/8-16 x 3/8	4	
----	----------------	--	--------------------------------	---	--

33	<b>R170714</b>	E14814	Fitting - Pressure Relief	2	
----	----------------	--------	---------------------------	---	--

34	<b>R500511</b>		Roller End - Threaded 3	2	
----	----------------	--	-------------------------	---	--

35	<b>R253-122</b>	253-122	Seal	2	
----	-----------------	---------	------	---	--

36	<b>R254-79</b>	JD8226	Cup - Bearing	2	
----	----------------	--------	---------------	---	--

*Tech Note: Use R254-79M installation mandrel to properly install race.:*

37	<b>R254-78</b>	JD8188	Tapered Bearing Cone	2	
----	----------------	--------	----------------------	---	--

38	<b>RET15755</b>	ET15755	Seal - Oil	4	
----	-----------------	---------	------------	---	--

All original equipment manufacturers names and part numbers are used for identification purposes only, and we are in no way implying that our products are original equipment parts. Prices subject to change without notice.



# Replaces John Deere 7200A Reel Mower

## Parts

30in Cutting Unit  
Rollers



Item No	R&R Part No.	OEM Part No.	Description	Qty Req	Order Quantity
39	<b>R237-54</b>	U46731, U6731	O-Ring - Small	2	
40	<b>RET15726</b>	ET15726, RET15726	Sleeve - Wear Hardened	2	
41	<b>R3296-15</b>	N101345	Locknut - 3/4-16 Nylon Jam	2	
42	<b>R471219</b>	471219, JD7759, JD7798	Zerk - Grease	2	
43	<b>RMT74</b>	MT74	Bushing - Roller Bkt	1	
44	<b>RMT1986</b>	MT1986	Shaft - 30 Roller	1	
45	<b>RET17514</b>	ET17514	Shaft - 26 Roller	1	
46	<b>RET17758</b>	ET17758	Pin - 26 Scrapers	1	
46	<b>RMT1982</b>	MT1982	Pin - 30 Scrapers	1	
48	<b>RMT5159</b>	MT5159	Scraper - Fits J.D. LH End	1	
49	<b>RMT2341</b>	MT2341	Section - Grooved Scraper 4 Tooth	2	
50	<b>RMT2340</b>	MT2340	Scraper - Fits J.D. Center	1	
51	<b>RMT2342</b>	MT2342	Section - Grooved Scraper 3 Tooth	1	
52	<b>RMT5158</b>	MT5158	Scraper - Fits J.D. RH End	1	
53	<b>R34M7010</b>	34M7010	Pin - Spring	1	
54	<b>RET15756</b>	ET15756, MT1739, MT739	Seal	2	
55	<b>R500534</b>		Bearing - with Cup	2	
56	<b>R1203831</b>		Shaft - Fusion Roller	1	
57	<b>R114-3717</b>		Seal	2	

All original equipment manufacturers names and part numbers are used for identification purposes only, and we are in no way implying that our products are original equipment parts. Prices subject to change without notice.



# Replaces John Deere 7200A Reel Mower

## Parts

30in Cutting Unit  
Rollers



Item No	R&R Part No.	OEM Part No.	Description	Qty Req	Order Quantity
58	<b>R112-5290</b>		Bearing - Stainless	2	
59	<b>R112-7494</b>		Seal	4	
60	<b>R114-3745</b>		Locknut - Bearing - Stainless	2	
61	<b>R302-5</b>	JD7797, JD7842, JD7844	Fitting - Grease	2	
62	<b>R1203841</b>		Shaft - Fusion Roller	1	
63	<b>RET17629</b>	ET17629	Spring - Torsion LH	1	
64	<b>RET17630</b>	ET17630	Spring - Torsion RH	1	
65	<b>R150676A</b>		Spacer - 1/8	4	
66	<b>RMT2593</b>	MT2593	Blade - 30 Scraper	1	
67	<b>RTC27070</b>	TCU27070	Scraper	1	
68	<b>RTC26998</b>	TCU26998	Panel	2	
69	<b>R14M7517</b>	14M7517	Locknut - 10mm x 1.5 ESNA	4	
70	<b>R03M7251</b>	03M7251	Bolt - Gr. Roller Scraper	16	
71	<b>R14M7303</b>	14M7303	Nut - 6mm x 1.0 Flanged	16	

All original equipment manufacturers names and part numbers are used for identification purposes only, and we are in no way implying that our products are original equipment parts. Prices subject to change without notice.