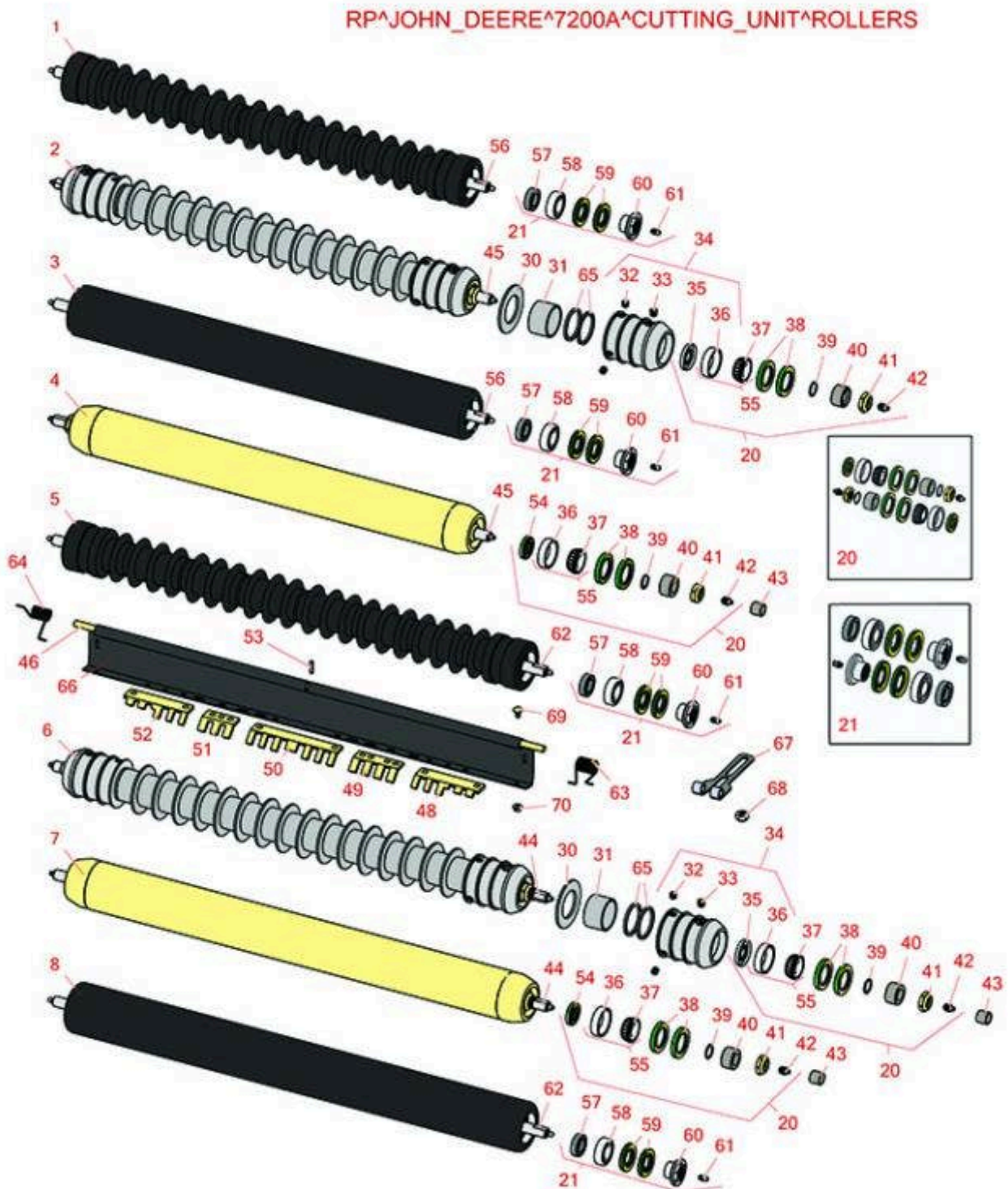




Replaces John Deere 7200A Reel Mower

Parts

26in Cutting Unit
Rollers



All original equipment manufacturers names and part numbers are used for identification purposes only, and we are in no way implying that our products are original equipment parts. Prices subject to change without notice.



Replaces John Deere 7200A Reel Mower

Parts

26in Cutting Unit
Rollers



Item No	R&R Part No.	OEM Part No.	Description	Qty Req	Order Quantity
---------	--------------	--------------	-------------	---------	----------------

R&R Rollers

1	R1203830		Roller - Fusion Grooved UHMW Polyethylene - 26 in	1	
---	-----------------	--	---------------------------------------------------	---	--

Tech Note: Fusion Rollers combine the best features of our UHMW plastic rollers with a heavy-duty internal bearing system. Machined from solid UHMW plastic that prevents build-up of debris. This roller has a patented deep groove design and ... <Click Part# for more>:

2	R500509	AMT2968, BM25318	Roller - Grooved Repairable Steel - 26	1	
---	----------------	---------------------	----------------------------------------	---	--

Tech Note: Constructed with a through shaft and greasable ball bearings. This roller can be repaired by unscrewing the ends and replacing the series of washers and spacers.:

3	R1203835		Roller - Fusion Smooth UHMW Polyethylene - 26 in	1	
---	-----------------	--	--------------------------------------------------	---	--

Tech Note: Fusion Rollers combine the best features of our UHMW plastic rollers with a heavy-duty internal bearing system. Machined from solid UHMW plastic that prevents build-up of debris. This roller turns on precision stainless ball bear... <Click Part# for more>:

4	RAET11265	AMT2969	Roller - Smooth Heavy Duty Tubular Steel - 26	1	
---	------------------	---------	-----------------------------------------------	---	--

Tech Note: Constructed with a through shaft, this heavy-duty roller uses tapered bearings for extended life.:

5	R1203840		Roller - Fusion Grooved UHMW Polyethylene - 30 in	1	
---	-----------------	--	---------------------------------------------------	---	--

Tech Note: Fusion Rollers combine the best features of our UHMW plastic rollers with a heavy-duty internal bearing system. Machined from solid UHMW plastic that prevents build-up of debris. This roller has a patented deep groove design and ... <Click Part# for more>:

6	R500514	AMT2977, BM25319	Roller - Grooved Repairable Steel - 30	1	
---	----------------	---------------------	----------------------------------------	---	--

Tech Note: Constructed with a through shaft and greasable ball bearings. This roller can be repaired by unscrewing the ends and replacing the series of washers and spacers.:

7	RAMT1056	AMT2976	Roller - Smooth Heavy Duty Tubular Steel - 30	1	
---	-----------------	---------	-----------------------------------------------	---	--

All original equipment manufacturers names and part numbers are used for identification purposes only, and we are in no way implying that our products are original equipment parts. Prices subject to change without notice.



Replaces John Deere 7200A Reel Mower

Parts

26in Cutting Unit
Rollers



Item No	R&R Part No.	OEM Part No.	Description	Qty Req	Order Quantity
---------	--------------	--------------	-------------	---------	----------------

Tech Note: Constructed with a through shaft, this heavy duty roller uses tapered bearings for extended life.:

8	R1203845		Roller - Fusion Smooth UHMW Polyethylene - 30 in	1	
---	-----------------	--	--------------------------------------------------	---	--

Tech Note: Fusion Rollers combine the best features of our UHMW plastic rollers with a heavy-duty internal bearing system. Machined from solid UHMW plastic that prevents build-up of debris. This roller turns on precision stainless ball bear... <Click Part# for more>:

Overhaul Kits

20	RAET10632	AET10632	Overhaul Kit - Roller	1	
----	------------------	----------	-----------------------	---	--

Tech Note: Includes 4 ea: RET15755 Seal; 2 ea: R237-54 O-Ring, R253-122 Seal, R254-78 Bearing, R254-79 Cup, R3296-15 Locknut, R471219 Grease Zerk, RET15726 Sleeve, RET15756 Seal:

21	R114-5430		Overhaul Kit - Roller	1	
----	------------------	--	-----------------------	---	--

Tech Note: Includes 4 ea.: R112-7494 Seals; 2 ea.: R302-5 Grease Zerks, R114-3717 Seals, R112-5290 Bearings & R114-3745 Locknuts:

Other Parts Available

30	R150673		Washer - 3 Repairable Roller	17	
----	----------------	--	------------------------------	----	--

31	R150676		Spacer - 2-3/4 Dia x 1-1/4 L	16	
----	----------------	--	------------------------------	----	--

32	R150691		Screw - Set Nyloc 3/8-16 x 3/8	4	
----	----------------	--	--------------------------------	---	--

33	R170714	E14814	Fitting - Pressure Relief	2	
----	----------------	--------	---------------------------	---	--

34	R500511		Roller End - Threaded 3	2	
----	----------------	--	-------------------------	---	--

35	R253-122	253-122	Seal	2	
----	-----------------	---------	------	---	--

36	R254-79	JD8226	Cup - Bearing	2	
----	----------------	--------	---------------	---	--

Tech Note: Use R254-79M installation mandrel to properly install race.:

37	R254-78	JD8188	Tapered Bearing Cone	2	
----	----------------	--------	----------------------	---	--

38	RET15755	ET15755	Seal - Oil	4	
----	-----------------	---------	------------	---	--

All original equipment manufacturers names and part numbers are used for identification purposes only, and we are in no way implying that our products are original equipment parts. Prices subject to change without notice.



Replaces John Deere 7200A Reel Mower

Parts

26in Cutting Unit
Rollers



Item No	R&R Part No.	OEM Part No.	Description	Qty Req	Order Quantity
39	R237-54	U46731, U6731	O-Ring - Small	2	
40	RET15726	ET15726, RET15726	Sleeve - Wear Hardened	2	
41	R3296-15	N101345	Locknut - 3/4-16 Nylon Jam	2	
42	R471219	471219, JD7759, JD7798	Zerk - Grease	2	
43	RMT74	MT74	Bushing - Roller Bkt	1	
44	RMT1986	MT1986	Shaft - 30 Roller	1	
45	RET17514	ET17514	Shaft - 26 Roller	1	
46	RET17758	ET17758	Pin - 26 Scrapers	1	
46	RMT1982	MT1982	Pin - 30 Scrapers	1	
48	RMT5159	MT5159	Scraper - Fits J.D. LH End	1	
49	RMT2341	MT2341	Section - Grooved Scraper 4 Tooth	2	
50	RMT2340	MT2340	Scraper - Fits J.D. Center	1	
51	RMT2342	MT2342	Section - Grooved Scraper 3 Tooth	1	
52	RMT5158	MT5158	Scraper - Fits J.D. RH End	1	
53	R34M7010	34M7010	Pin - Spring	1	
54	RET15756	ET15756, MT1739, MT739	Seal	2	
55	R500534		Bearing - with Cup	2	
56	R1203831		Shaft - Fusion Roller	1	
57	R114-3717		Seal	2	

All original equipment manufacturers names and part numbers are used for identification purposes only, and we are in no way implying that our products are original equipment parts. Prices subject to change without notice.



Replaces John Deere 7200A Reel Mower

Parts

26in Cutting Unit
Rollers



Item No	R&R Part No.	OEM Part No.	Description	Qty Req	Order Quantity
58	R112-5290		Bearing - Stainless	2	
59	R112-7494		Seal	4	
60	R114-3745		Locknut - Bearing - Stainless	2	
61	R302-5	JD7797, JD7842, JD7844	Fitting - Grease	2	
62	R1203841		Shaft - Fusion Roller	1	
63	RET17629	ET17629	Spring - Torsion LH	1	
64	RET17630	ET17630	Spring - Torsion RH	1	
65	R150676A		Spacer - 1/8	4	
66	RTC27070	TCU27070	Scraper	1	
67	RTC26998	TCU26998	Panel	2	
68	R14M7517	14M7517	Locknut - 10mm x 1.5 ESNA	4	
69	R03M7251	03M7251	Bolt - Gr. Roller Scraper	16	
70	R14M7303	14M7303	Nut - 6mm x 1.0 Flanged	16	

All original equipment manufacturers names and part numbers are used for identification purposes only, and we are in no way implying that our products are original equipment parts. Prices subject to change without notice.