



Replaces Exmark Lazer Z X-Series Parts

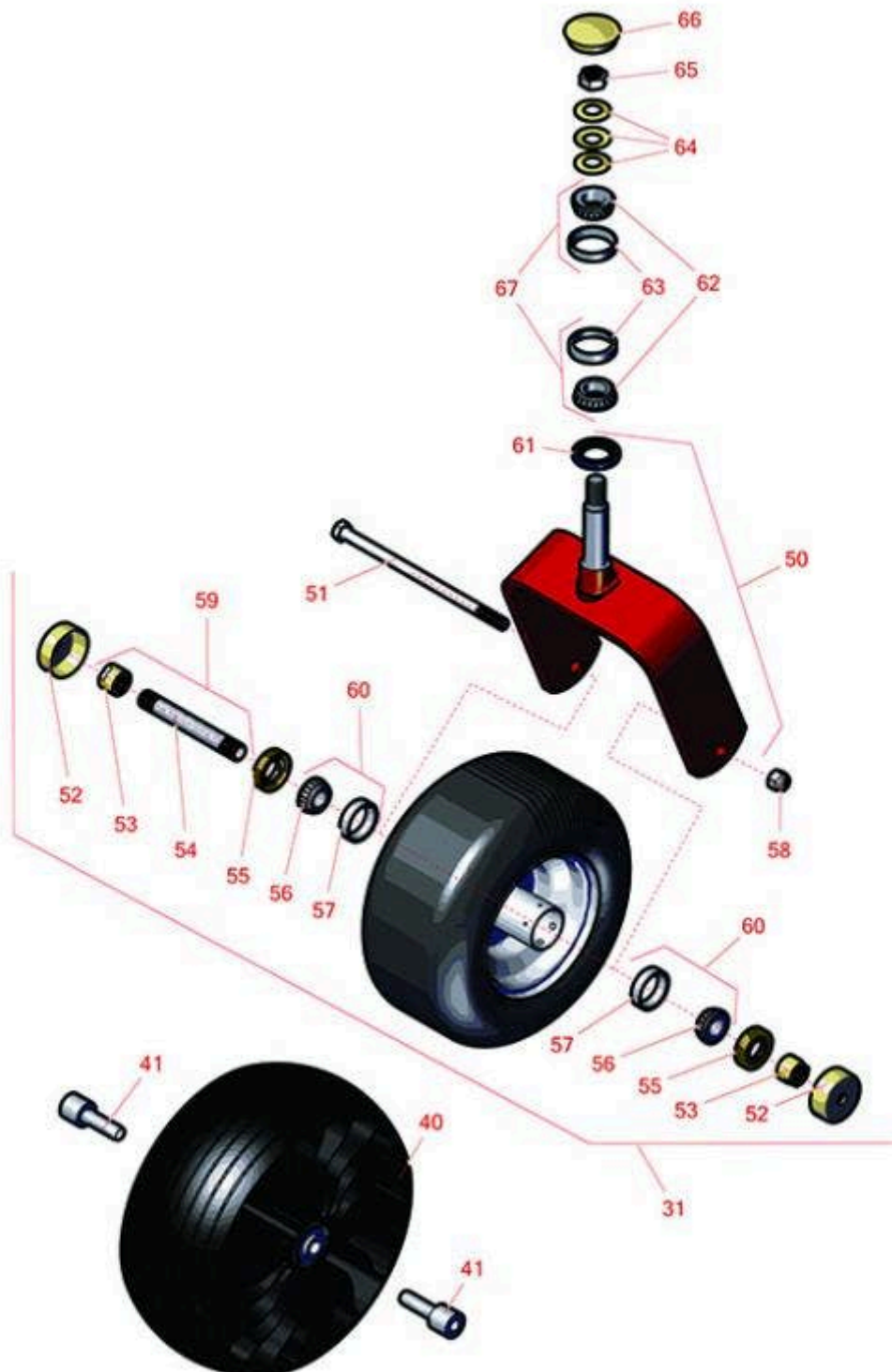
*Zero Turn Mower with 60in Deck - Models LZX801CKA60600,
LZX801CKA606C1, LZX801GKA60600, LZX801GKA606C1,
LZX921GKA60600, LZX940EKC60600, LZX940EKC606T0,
LZX940EKC606W0
Caster Wheel*





Replaces Exmark Lazer Z X-Series Parts

Zero Turn Mower with 60in Deck - Models LZX801CKA60600, LZX801CKA606C1, LZX801GKA60600, LZX801GKA606C1, LZX921GKA60600, LZX940EKC60600, LZX940EKC606T0, LZX940EKC606W0
Caster Wheel



All original equipment manufacturers names and part numbers are used for identification purposes only, and we are in no way implying that our products are original equipment parts. Prices subject to change without notice.



Replaces Exmark Lazer Z X-Series Parts

Zero Turn Mower with 60in Deck - Models LZX801CKA60600, LZX801CKA606C1, LZX801GKA60600, LZX801GKA606C1, LZX921GKA60600, LZX940EKC60600, LZX940EKC606T0, LZX940EKC606W0
Caster Wheel



| Item No | R&R Part No. | OEM Part No. | Description | Qty Req | Order Quantity |
|---------|--------------|--------------|-------------|---------|----------------|
|---------|--------------|--------------|-------------|---------|----------------|

Tires & Wheels

| | | | | | |
|----|-----------|----------|--|---|--|
| 0 | TIRES | | Click Here to View Complete Tire Selection | 0 | |
| 31 | R109-9127 | 109-9127 | Tire & Wheel - 13x6.50-6 Flat Free | 2 | |

Optional Michelin Tweel Tires

| | | | | | |
|----|-----------|---|---|---|--|
| 40 | RTMT73818 | 109-9127, 117-0361, 126-3289, 126-4860 | Michelin X Tweel Turf Caster Grooved - 13x6.5N6 (5/8in Mount) 290 lb Max Load | 2 | |
|----|-----------|---|---|---|--|

Detail Description: Michelin X Tweel Turf casters replace the existing front casters on zero turn radius mowers, and completely eliminate the risk of flat tires. They have a consistent hub height which helps ensure the mower deck produces an even cut, while the poly-resin spokes help dampen the ride for enhanced operator comfort, even when navigating over curbs and other bumps. They are designed to provide a long wear life.:

| | | | | | |
|----|-----------|---|--|---|--|
| 40 | RTMT41011 | 109-9127, 117-0361, 126-3289, 126-4860 | Michelin X Tweel Turf Caster Smooth - 13x6.5N6 (5/8in Mount) 290 lb Max Load | 2 | |
|----|-----------|---|--|---|--|

Detail Description: Michelin X Tweel Turf casters replace the existing front casters on zero turn radius mowers, and completely eliminate the risk of flat tires. They have a consistent hub height which helps ensure the mower deck produces an even cut, while the poly-resin spokes help dampen the ride for enhanced operator comfort, even when navigating over curbs and other bumps. They are designed to provide a long wear life.:

| | | | | | |
|----|-----------|--|-------------------------------------|---|--|
| 41 | RTMT40653 | | Michelin Spacer - 1/2in ID x 1in OD | 4 | |
|----|-----------|--|-------------------------------------|---|--|

Other parts Available

| | | | | | |
|----|-----------|--|-------------------------------|---|--|
| 50 | R116-8888 | 103-1474-01, 116--6707-01, 116-6707-01 | Fork - Caster 7.875 in Inside | 2 | |
| 51 | R325-39 | 325-39 | Bolt - Hx HD 1/2-13 x 9 1/2 | 1 | |

All original equipment manufacturers names and part numbers are used for identification purposes only, and we are in no way implying that our products are original equipment parts. Prices subject to change without notice.



Replaces Exmark Lazer Z X-Series Parts

Zero Turn Mower with 60in Deck - Models LZX801CKA60600, LZX801CKA606C1, LZX801GKA60600, LZX801GKA606C1, LZX921GKA60600, LZX940EKC60600, LZX940EKC606T0, LZX940EKC606W0
Caster Wheel



| Item No | R&R Part No. | OEM Part No. | Description | Qty Req | Order Quantity |
|---|------------------|-------------------------|------------------------------------|---------|----------------|
| 52 | R103-2768 | 103-2768 | Guard - Seal | 4 | |
| 53 | R103-3051 | 103-3051 | Spacer - Nut - Hardened | 4 | |
| 54 | R103-5156 | 103-5156 | Axle- Caster | 2 | |
| 55 | R103-0063 | 103-0063 | Seal - Grease | 4 | |
| 56 | R254-78 | 1-633585 | Tapered Bearing Cone | 4 | |
| 57 | R254-79 | 1-633584, R & R ONLY | Cup - Bearing | 4 | |
| <i>Detail Description: Use R254-79M installation mandrel to properly install race.:</i> | | | | | |
| 58 | RF5003 | 3296-23 | Locknut - ESNA 1/2-13 | 2 | |
| 59 | R126-5361 | 126-5361 | Axle Assy - with Bushing - Caster | 2 | |
| 60 | R500534 | 1-633585, R & R ONLY | Bearing - with Cup | 4 | |
| <i>Detail Description: Kit includes: 1 ea R254-78- Bearing Cone & R254-79 Bearing Cone:</i> | | | | | |
| 61 | R116-5647 | 116-5647, R & R ONLY | Seal - Grease | 2 | |
| 62 | R254-94 | 1-543509 | Tapered Bearing Cone | 4 | |
| 63 | R254-72 | 1-543508 | Cup - Bearing | 4 | |
| 64 | R1-633508 | 1-633508 | Washer - Spring Disc | 6 | |
| 65 | R3296-51 | 3296-51 | Nut - Nylon Lock 3/4-10 Gr 8 | 2 | |
| 66 | R103-4882 | 103-4882 | Grease Cap - Castor | 2 | |
| 67 | R500596 | R & R ONLY | Tapered Bearing Set - Cup and Cone | 4 | |

All original equipment manufacturers names and part numbers are used for identification purposes only, and we are in no way implying that our products are original equipment parts. Prices subject to change without notice.