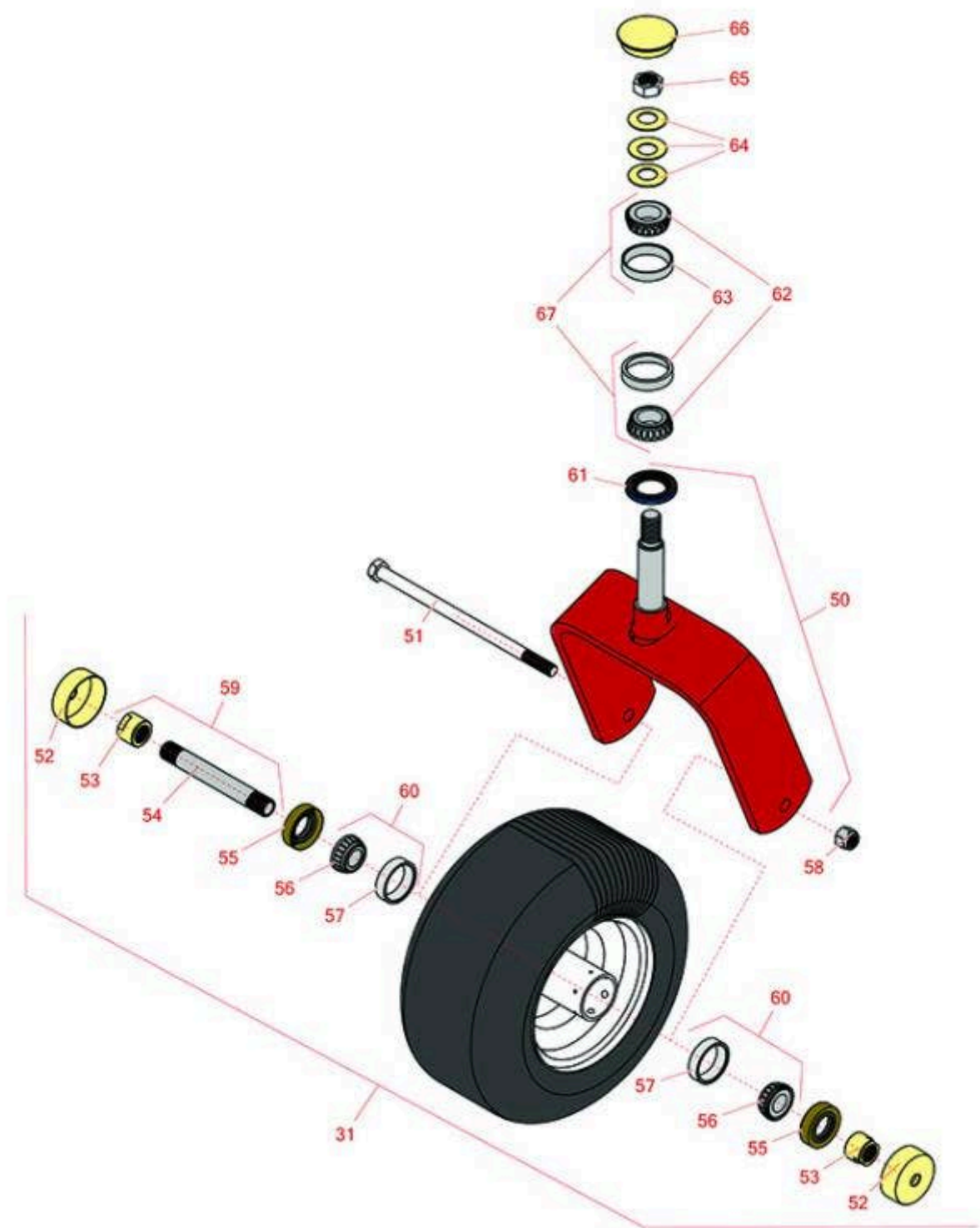




# Replaces Exmark Lazer Z X-Series Parts

Zero Turn Mower with 60in Deck - Models LZX940EKC60RT0  
& LZX940EKC60RW0  
Caster Wheel



All original equipment manufacturers names and part numbers are used for identification purposes only, and we are in no way implying that our products are original equipment parts. Prices subject to change without notice.



## Replaces Exmark Lazer Z X-Series Parts

Zero Turn Mower with 60in Deck - Models LZX940EKC60RT0  
& LZX940EKC60RW0  
Caster Wheel



| Item No   | R&R Part No.     | OEM Part No.                                 | Description                        | Qty Req | Order Quantity |
|---|------------------|--|------------------------------------|---------|----------------|
| <b>Tires</b>  |                  |  |                                    |         |                |
| 31  | <b>R109-9127</b> | 109-9127                                     | Tire & Wheel - 13x6.50-6 Flat Free | 2       |                |
| <b>Other parts Available</b>  |                  |  |                                    |         |                |
| 50  | <b>R116-8888</b> | 103-1474-01,<br>116--6707-01,<br>116-6707-01 | Fork - Caster 7.875 in Inside      | 2       |                |
| 51  | <b>R325-39</b>   | 325-39                                       | Bolt - Hx HD 1/2-13 x 9 1/2        | 1       |                |
| 52  | <b>R103-2768</b> | 103-2768                                     | Guard - Seal                       | 4       |                |
| 53  | <b>R103-3051</b> | 103-3051                                     | Spacer - Nut - Hardened            | 4       |                |
| 54  | <b>R103-3155</b> | 103-3155                                     | Axle - Caster                      | 2       |                |
| 55  | <b>R103-0063</b> | 103-0063                                     | Seal - Grease                      | 4       |                |
| 56  | <b>R254-78</b>   | 1-633585                                     | Tapered Bearing Cone               | 4       |                |
| 57  | <b>R254-79</b>   | 1-633584,<br>R & R ONLY                      | Cup - Bearing                      | 4       |                |
| <i>Detail Description: Use R254-79M installation mandrel to properly install race.:</i>         |                  |  |                                    |         |                |
| 58  | <b>RF5003</b>    | 3296-23                                      | Locknut - ESNA 1/2-13              | 2       |                |
| 59  | <b>R126-5361</b> | 126-5361                                     | Axle Assy - with Bushing - Caster  | 2       |                |
| 60  | <b>R500534</b>   | 1-633585,<br>R & R ONLY                      | Bearing - with Cup                 | 4       |                |
| <i>Detail Description: Kit includes: 1 ea R254-78- Bearing Cone &amp; R254-79 Bearing Cone:</i> |                  |  |                                    |         |                |
| 61  | <b>R116-5647</b> | 116-5647,<br>R & R ONLY                      | Seal - Grease                      | 2       |                |
| 62  | <b>R254-94</b>   | 1-543509                                     | Tapered Bearing Cone               | 4       |                |
| 63  | <b>R254-72</b>   | 1-543508                                     | Cup - Bearing                      | 4       |                |

All original equipment manufacturers names and part numbers are used for identification purposes only, and we are in no way implying that our products are original equipment parts. Prices subject to change without notice.



## Replaces Exmark Lazer Z X-Series Parts

Zero Turn Mower with 60in Deck - Models LZX940EKC60RT0  
& LZX940EKC60RW0  
Caster Wheel



| Item No | R&R Part No.     | OEM Part No. | Description                        | Qty Req | Order Quantity |
|---------|------------------|--------------|------------------------------------|---------|----------------|
| 64      | <b>R1-633508</b> | 1-633508     | Washer - Spring Disc               | 6       |                |
| 65      | <b>R3296-51</b>  | 3296-51      | Nut - Nylon Lock 3/4-10 Gr 8       | 2       |                |
| 66      | <b>R103-4882</b> | 103-4882     | Grease Cap - Castor                | 2       |                |
| 67      | <b>R500596</b>   | R & R ONLY   | Tapered Bearing Set - Cup and Cone | 4       |                |

All original equipment manufacturers names and part numbers are used for identification purposes only, and we are in no way implying that our products are original equipment parts. Prices subject to change without notice.