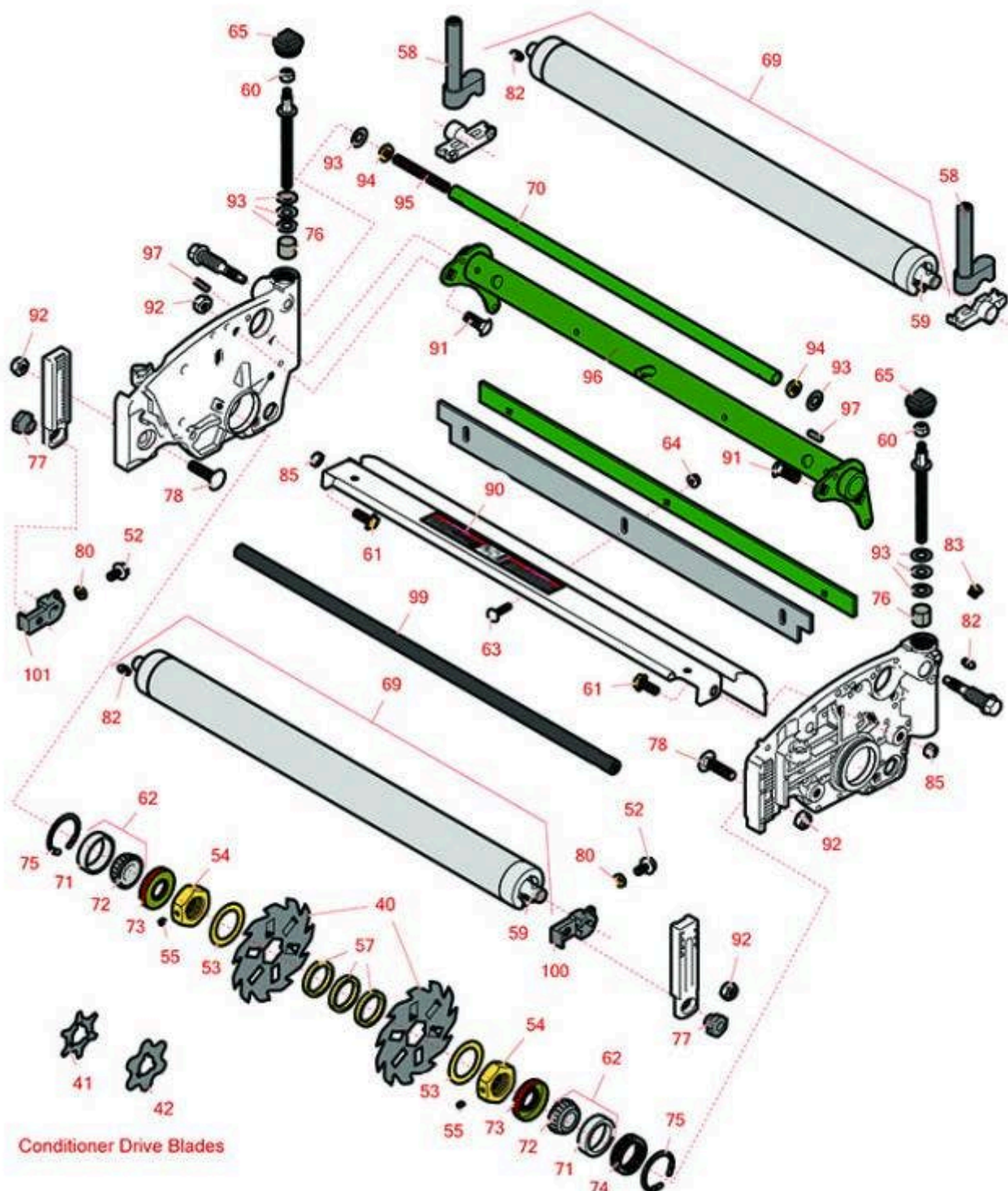




# Replaces John Deere 2550 Riding Greens Mower Parts

Verti-Cut Unit  
Reel & Frame



All original equipment manufacturers names and part numbers are used for identification purposes only, and we are in no way implying that our products are original equipment parts. Prices subject to change without notice.



# Replaces John Deere 2550 Riding Greens Mower Parts

Verti-Cut Unit  
Reel & Frame



Item No	R&R Part No.	OEM Part No.	Description	Qty Req	Order Quantity
---------	--------------	--------------	-------------	---------	----------------

## Blades

40	<b>R150209C</b>	TCU26776	Verti-Cut Blade - Carbide Tipped 2mm	27	
----	-----------------	----------	--------------------------------------	----	--

*Detail Description: STRONG BY DESIGN. Each blade is made with the highest quality hand-picked steel, and laser-cut to our exacting specifications for superior toughness and wear.<BR><BR>TUNGSTEN CARBIDE TIPS. Protect blades from abrasion for extended life and maintain a consistent cutting depth. Optional cutting widths to meet local turf conditions.:*

## Conditioner Drive Blades

41	<b>RET14707</b>	ET14707	Verti-Cut Blade - .025 x 2.375	72	
42	<b>RMT2624</b>	MT2624	Knife - Greens Conditioner	38	

## Other Parts Available

52	<b>R33114-016</b>	19M7162	Bolt - Hx HD 8mm x 1.25 x 15	2	
53	<b>R24H1513</b>	24H1513	Washer	2	
54	<b>RET17053</b>	ET17053	Nut - 1-1/8-7 Jam Incl Set Screw	2	
55	<b>R3245-35</b>	22H841	Screw - Set 1/4-28 x 1/4	2	
57	<b>RET17713</b>	ET17713	Spacer - Vertical Mower Shaft	79	
58	<b>RAUC13598</b>	AUC13598, TCA19369	Adjuster	2	
59	<b>RAA35741</b>	AA35741, AET10129, TCA22836	Bearing	4	

*Detail Description: 1/4" Side Hole:*

60	<b>RM148268</b>	M148268	Lock Nut	2	
61	<b>R19M7866</b>	19M7866	Bolt - Flanged Hex M8-1.25 x 20	2	
62	<b>R500534</b>		Bearing - with Cup	2	

*Detail Description: Kit includes: 1 ea R254-78- Bearing Cone & R254-79 Bearing Cone:*

All original equipment manufacturers names and part numbers are used for identification purposes only, and we are in no way implying that our products are original equipment parts. Prices subject to change without notice.



# Replaces John Deere 2550 Riding Greens Mower Parts

Verti-Cut Unit  
Reel & Frame



Item No	R&R Part No.	OEM Part No.	Description	Qty Req	Order Quantity
63	<b>R03M7232</b>	03M7232	Bolt - Carriage M6-1.0 x 25	3	
64	<b>R14M7303</b>	14M7303	Nut - 6mm x 1.0 Flanged	3	
65	<b>RUC16102</b>	TCU24949, UC16102	Cap	2	
69	<b>RAET10111</b>	AET10111, AMT2876	Roller - Smooth Tubular Steel	2	
<i>Detail Description: This tubular steel roller uses greasable "water-pump" style bearings.:</i>					
69	<b>RAMT1060</b>	AMT1060	Roller - Smooth Tubular Steel	2	
<i>Detail Description: This tubular steel roller uses greasable "water-pump" style bearings.:</i>					
69	<b>RBM18480</b>	BM18480	Roller Assy - Solid 2"	2	
70	<b>RTC26729</b>	TCU26729	Tube	1	
71	<b>R254-79</b>	JD8226	Cup - Bearing	2	
<i>Detail Description: Use R254-79M installation mandrel to properly install race.:</i>					
72	<b>R254-78</b>	JD8188	Tapered Bearing Cone	2	
73	<b>RET14566</b>	ET14566	Seal - Reel	2	
74	<b>RTC23880</b>	TCU23880, TCU28964	Compression Spring - Reel Bearing	1	
75	<b>R40M7226</b>	40M1862, 40M7226	Ring - Retaining	2	
76	<b>RMT74</b>	MT74	Bushing - Roller Bkt	2	
77	<b>RTC28635</b>	TCU24555, TCU28635	Eccentric	2	
78	<b>R03M7194</b>	03M7194	Bolt	2	
80	<b>R14M7151</b>	14M7151	Nut - Jam Roller Adj	2	

All original equipment manufacturers names and part numbers are used for identification purposes only, and we are in no way implying that our products are original equipment parts. Prices subject to change without notice.



# Replaces John Deere 2550 Riding Greens Mower Parts

Verti-Cut Unit  
Reel & Frame



Item No	R&R Part No.	OEM Part No.	Description	Qty Req	Order Quantity
82	R302-5	JD7797, JD7842, JD7844	Fitting - Grease	8	
83	R170714	E14814	Fitting - Pressure Relief	2	
85	RH137328	H137328	Locknut	2	
90	RMT6517	MT6517	Label - Warning	1	
91	R03M7191	03M7191	Bolt - Carriage M10 x 25	4	
92	R14M7517	14M7517	Locknut - 10mm x 1.5 ESNA	4	
93	RET16679	ET16679	Washer - Spring	8	
94	R14M7152	14M7152	Nut - 10mm x 1.5 Jam	2	
95	RTC25398	TCU25398	Compression Spring	1	
96	RAUC13891	AUC13891, TCA18291	Frame	1	
97	RR30587	30587, R30587	Pin - Dowell 1/4 Dia. x .75	2	
99	RUC13425	UC13425	Rod - Hardened	1	
100	RUC18211	TCU24461, UC18211	Bracket - LH	1	
101	RUC16109	TCU24461, UC16109	Bracket - RH	1	

All original equipment manufacturers names and part numbers are used for identification purposes only, and we are in no way implying that our products are original equipment parts. Prices subject to change without notice.