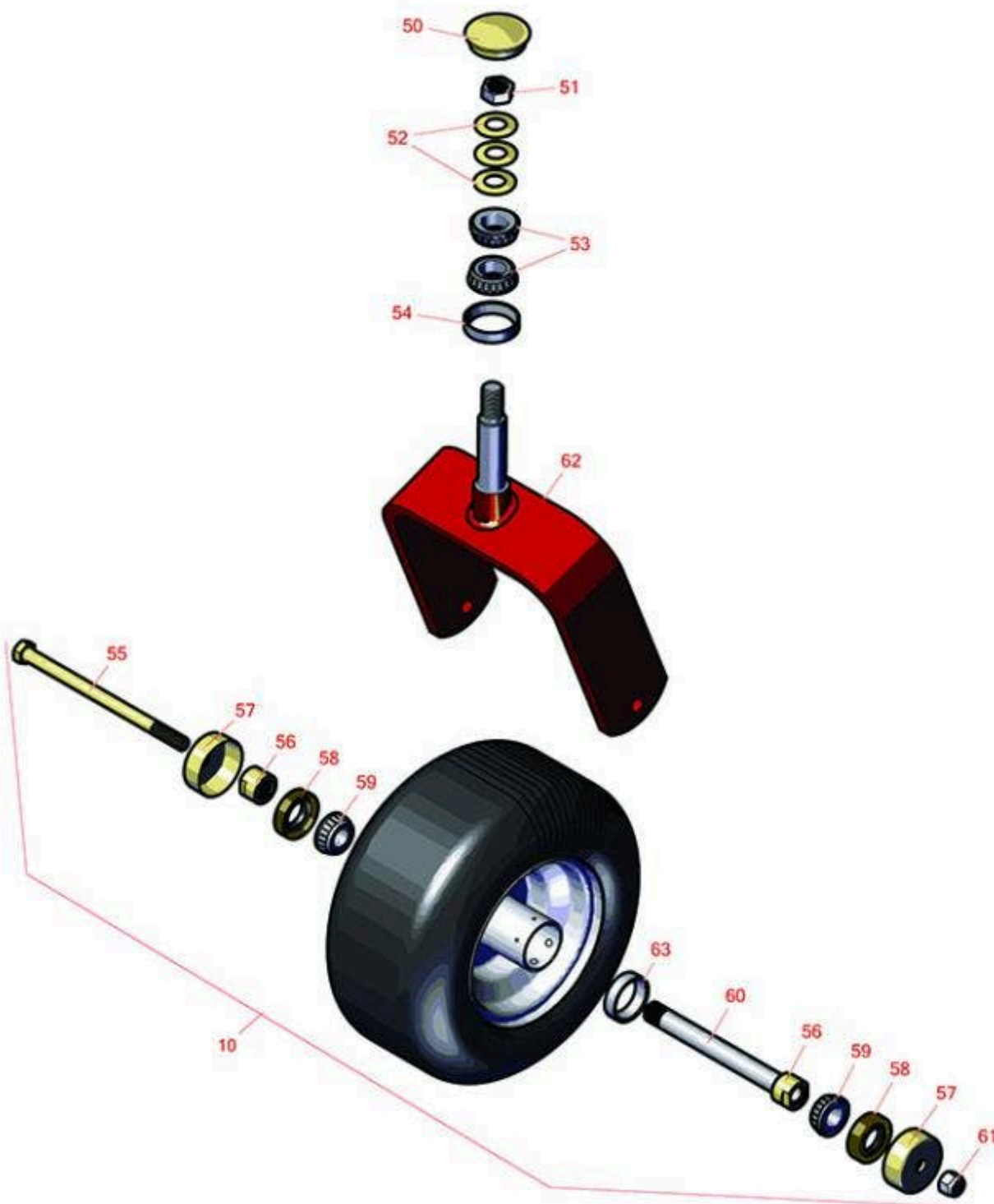




Replaces Toro Z Master G3 Riding Mower Parts

72in Deck
Caster Wheel



All original equipment manufacturers names and part numbers are used for identification purposes only, and we are in no way implying that our products are original equipment parts. Prices subject to change without notice.



Replaces Toro Z Master G3 Riding Mower Parts

72in Deck
Caster Wheel



Item No	R&R Part No.	OEM Part No.	Description	Qty Req	Order Quantity
---------	--------------	--------------	-------------	---------	----------------

Tires & Wheels

10	R109-9127	109-9124, 109-9125, 109-9127	Tire & Wheel - 13x6.50-6 Flat Free	1	
----	-----------	------------------------------------	------------------------------------	---	--

Optional Michelin Tweel Tires

30	RTMT41011	109-9127, 126-7592, 126-7753, 127-9526, 127-9528, 127-9540, 139-3604, 139-3639, 140-4896	Michelin X Tweel Turf Caster Smooth - 13x6.5N6 (5/8in Mount) 290 lb Max Load	2	
----	-----------	--	--	---	--

Detail Description: Michelin X Tweel Turf casters replace the existing front casters on zero turn radius mowers, and completely eliminate the risk of flat tires. They have a consistent hub height which helps ensure the mower deck produces an even cut, while the poly-resin spokes help dampen the ride for enhanced operator comfort, even when navigating over curbs and other bumps. They are designed to provide a long wear life.:

30	RTMT73818	109-9127, 126-7592, 126-7753, 127-9526, 127-9528, 127-9540, 139-3604, 140-4896	Michelin X Tweel Turf Caster Grooved - 13x6.5N6 (5/8in Mount) 290 lb Max Load	2	
----	-----------	---	---	---	--

Detail Description: Michelin X Tweel Turf casters replace the existing front casters on zero turn radius mowers, and completely eliminate the risk of flat tires. They have a consistent hub height which helps ensure the mower deck produces an even cut, while the poly-resin spokes help dampen the ride for enhanced operator comfort, even when navigating over curbs and other bumps. They are designed to provide a long wear life.:

31	RTMT40653		Michelin Spacer - 1/2in ID x 1in OD	4	
----	-----------	--	-------------------------------------	---	--

Other Parts Available

50	R103-4882	103-4882	Grease Cap - Castor	1	
----	-----------	----------	---------------------	---	--

All original equipment manufacturers names and part numbers are used for identification purposes only, and we are in no way implying that our products are original equipment parts. Prices subject to change without notice.



Replaces Toro Z Master G3 Riding Mower Parts

72in Deck
Caster Wheel



Item No	R&R Part No.	OEM Part No.	Description	Qty Req	Order Quantity
51	R3296-51	3296-51, 3296-81	Nut - Nylon Lock 3/4-10 Gr 8	1	
52	R1-633508	1-633508	Washer - Spring Disc	3	
53	R254-94	1-543509, 254-94, 32-8090, 32-8240, 32-9640, 40440, 62-3330	Tapered Bearing Cone	2	
54	R1-543511	1-543511	Seal- Grease	1	
55	R325-39	325-39	Bolt - Hx HD 1/2-13 x 9 1/2	1	
56	R103-3051	103-3051	Spacer - Nut - Hardened	2	
57	R103-2768	103-2768	Guard - Seal	2	
58	R103-0063	103-0063	Seal - Grease	2	
59	R500534	1-633585	Bearing - with Cup	2	
<i>Detail Description: Kit includes: 1 ea R254-78- Bearing Cone & R254-79 Bearing Cone:</i>					
59	R254-78	01-102-0060, 01-102-0130, 1-633585, 254-78, 32-7790, 32-9580, 93-4813	Tapered Bearing Cone	0	
60	R103-5156	103-5156	Axle- Caster	1	
61	RF5003	32127-29, 32131-5, 32132-5, 3296-23	Locknut - ESNA 1/2-13	1	
62	R116-8888	103-1474-01, 116-6707-01, 116-8888	Fork - Caster 7.875 in Inside	1	

All original equipment manufacturers names and part numbers are used for identification purposes only, and we are in no way implying that our products are original equipment parts. Prices subject to change without notice.



Replaces Toro Z Master G3 Riding Mower Parts

72in Deck
Caster Wheel



Item No	R&R Part No.	OEM Part No.	Description	Qty Req	Order Quantity
63	R254-79	01-103-0060, 01-103-0130, 1-633584, 252-106, 254-79, 32-7800, 32-9590	Cup - Bearing	1	

Detail Description: Use R254-79M installation mandrel to properly install race.:

All original equipment manufacturers names and part numbers are used for identification purposes only, and we are in no way implying that our products are original equipment parts. Prices subject to change without notice.