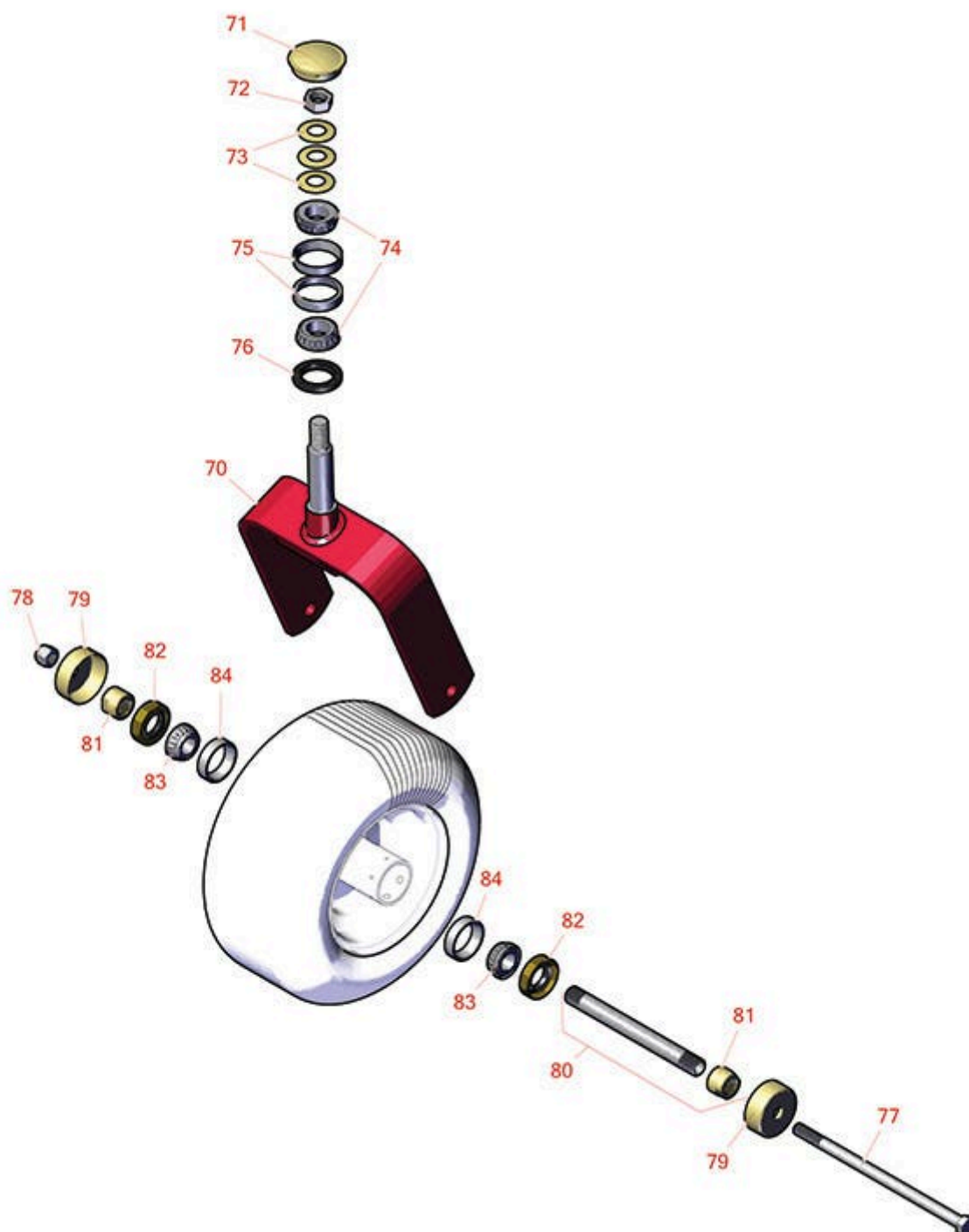




# Replaces Toro Z Master Professional 7000 Parts

Zero Turn Mower with 72in Deck - Model 72274  
Caster Wheel



All original equipment manufacturers names and part numbers are used for identification purposes only, and we are in no way implying that our products are original equipment parts. Prices subject to change without notice.



# Replaces Toro Z Master Professional 7000 Parts

Zero Turn Mower with 72in Deck - Model 72274  
Caster Wheel



Item No	R&R Part No.	OEM Part No.	Description	Qty Req	Order Quantity
---------	--------------	--------------	-------------	---------	----------------

## Other Parts Available

70	<b>R116-8888</b>	103-1474-01, 116-6707-01, 116-8888	Fork - Caster 7.875 in Inside	2	
71	<b>R103-4882</b>	103-4882	Grease Cap - Castor	2	
72	<b>R3296-51</b>	3296-51, 3296-81	Nut - Nylon Lock 3/4-10 Gr 8	2	
73	<b>R1-633508</b>	1-633508	Washer - Spring Disc	6	
74	<b>R254-94</b>	1-543509, 254-94, 32-8090, 32-8240, 32-9640, 40440, 62-3330	Tapered Bearing Cone	4	
75	<b>R254-72</b>	01-103-0050, 01-103-0120, 01-103-0140, 1-543508, 254-71, 254-72, 40439, 62-3340, 99-4511	Cup - Bearing	4	
76	<b>R116-5647</b>	116-5647	Seal - Grease	2	
77	<b>R325-39</b>	325-39	Bolt - Hx HD 1/2-13 x 9 1/2	2	
78	<b>RF5003</b>	32127-29, 32131-5, 32132-5, 3296-23	Locknut - ESNA 1/2-13	2	
79	<b>R103-2768</b>	103-2768	Guard - Seal	4	
80	<b>R126-5361</b>	126-5361	Axle Assy - with Bushing - Caster	2	
81	<b>R103-3051</b>	103-3051	Spacer - Nut - Hardened	4	

All original equipment manufacturers names and part numbers are used for identification purposes only, and we are in no way implying that our products are original equipment parts. Prices subject to change without notice.



# Replaces Toro Z Master Professional 7000 Parts

Zero Turn Mower with 72in Deck - Model 72274  
Caster Wheel



Item No	R&R Part No.	OEM Part No.	Description	Qty Req	Order Quantity
82	<b>R103-0063</b>	103-0063	Seal - Grease	4	
83	<b>R254-78</b>	01-102-0060, 01-102-0130, 1-633585, 254-78, 32-7790, 32-9580, 93-4813	Tapered Bearing Cone	4	
84	<b>R254-79</b>	01-103-0060, 01-103-0130, 1-633584, 252-106, 254-79, 32-7800, 32-9590	Cup - Bearing	2	

*Detail Description: Use R254-79M installation mandrel to properly install race.:*

All original equipment manufacturers names and part numbers are used for identification purposes only, and we are in no way implying that our products are original equipment parts. Prices subject to change without notice.