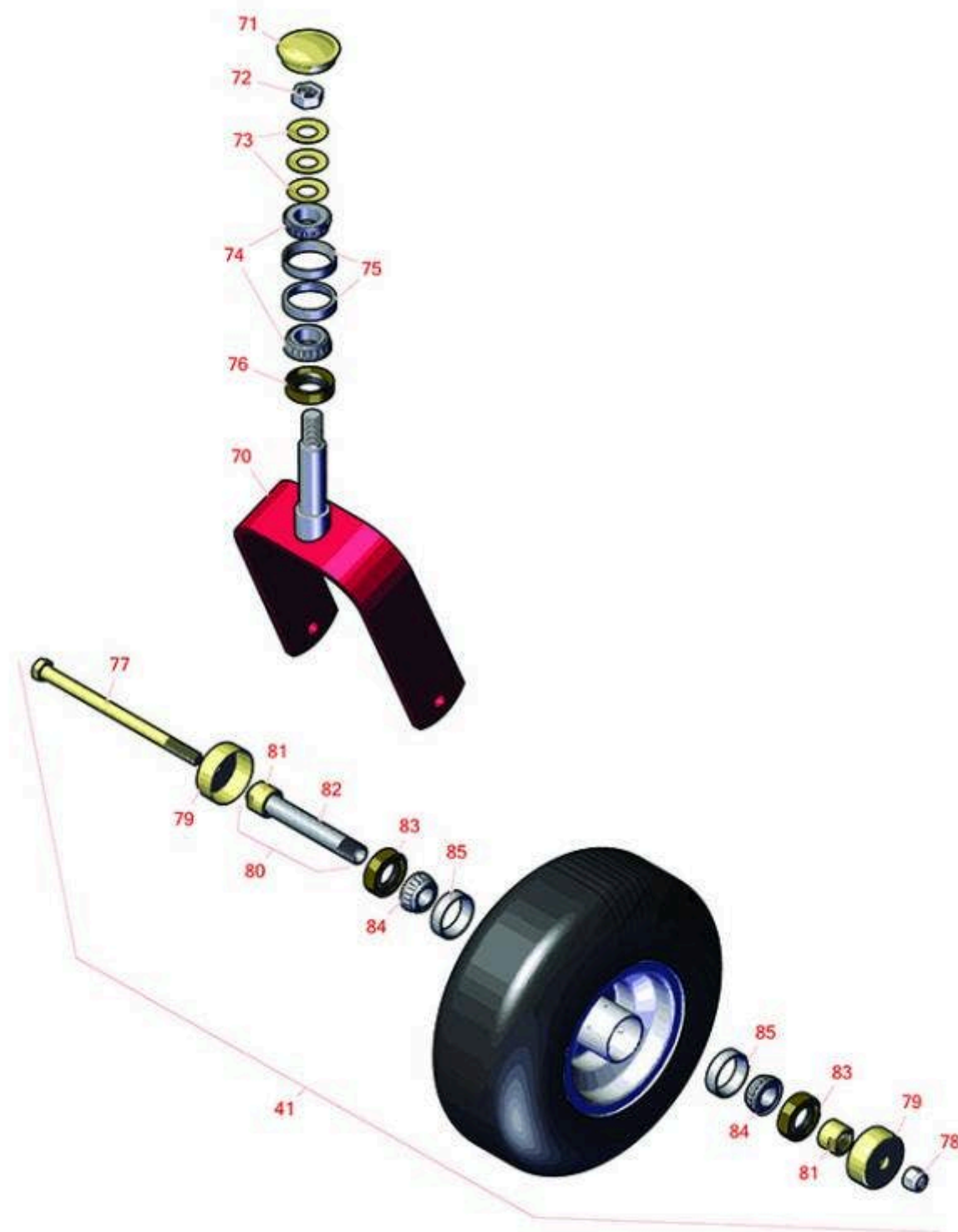




# Replaces Toro Z Master Professional 6000 Parts

Zero Turn Mower with 48in Deck - Model 74909  
Caster Wheel



All original equipment manufacturers names and part numbers are used for identification purposes only, and we are in no way implying that our products are original equipment parts. Prices subject to change without notice.



# Replaces Toro Z Master Professional 6000 Parts

Zero Turn Mower with 48in Deck - Model 74909  
Caster Wheel



Item No	R&R Part No.	OEM Part No.	Description	Qty Req	Order Quantity
---------	--------------	--------------	-------------	---------	----------------

## Tire & Wheels

0	<b>TIRES</b>		<a href="#">Click Here to View Complete Tire Selection</a>	0	
41	<b>R109-9127</b>	109-9124, 109-9125, 109-9127	Tire & Wheel - 13x6.50-6 Flat Free	2	

## Other Parts Available

70	<b>R116-8888</b>	103-1474-01, 116-6707-01, 116-8888	Fork - Caster 7.875 in Inside	2	
71	<b>R103-4882</b>	103-4882	Grease Cap - Castor	4	
72	<b>R3296-51</b>	3296-51, 3296-81	Nut - Nylon Lock 3/4-10 Gr 8	2	
73	<b>R1-633508</b>	1-633508	Washer - Spring Disc	6	
74	<b>R254-94</b>	1-543509, 254-94, 32-8090, 32-8240, 32-9640, 40440, 62-3330	Tapered Bearing Cone	4	
75	<b>R254-72</b>	01-103-0050, 01-103-0120, 01-103-0140, 1-543508, 254-71, 254-72, 40439, 62-3340, 99-4511	Cup - Bearing	4	
76	<b>R116-5647</b>	116-5647	Seal - Grease	2	
77	<b>R325-39</b>	325-39	Bolt - Hx HD 1/2-13 x 9 1/2	2	

All original equipment manufacturers names and part numbers are used for identification purposes only, and we are in no way implying that our products are original equipment parts. Prices subject to change without notice.



# Replaces Toro Z Master Professional 6000 Parts

Zero Turn Mower with 48in Deck - Model 74909  
Caster Wheel



Item No	R&R Part No.	OEM Part No.	Description	Qty Req	Order Quantity
78	<b>RF5003</b>	32127-29, 32131-5, 32132-5, 3296-23	Locknut - ESNA 1/2-13	2	
79	<b>R103-2768</b>	103-2768	Guard - Seal	4	
80	<b>R126-5361</b>	126-5361	Axle Assy - with Bushing - Caster	2	
81	<b>R103-3051</b>	103-3051	Spacer - Nut - Hardened	4	
82	<b>R103-3155</b>	103-3155	Axle - Caster	2	
83	<b>R103-0063</b>	103-0063	Seal - Grease	4	
84	<b>R254-78</b>	01-102-0060, 01-102-0130, 1-633585, 254-78, 32-7790, 32-9580, 93-4813	Tapered Bearing Cone	4	
85	<b>R254-79</b>	01-103-0060, 01-103-0130, 1-633584, 252-106, 254-79, 32-7800, 32-9590	Cup - Bearing	4	

*Detail Description: Use R254-79M installation mandrel to properly install race.:*

All original equipment manufacturers names and part numbers are used for identification purposes only, and we are in no way implying that our products are original equipment parts. Prices subject to change without notice.