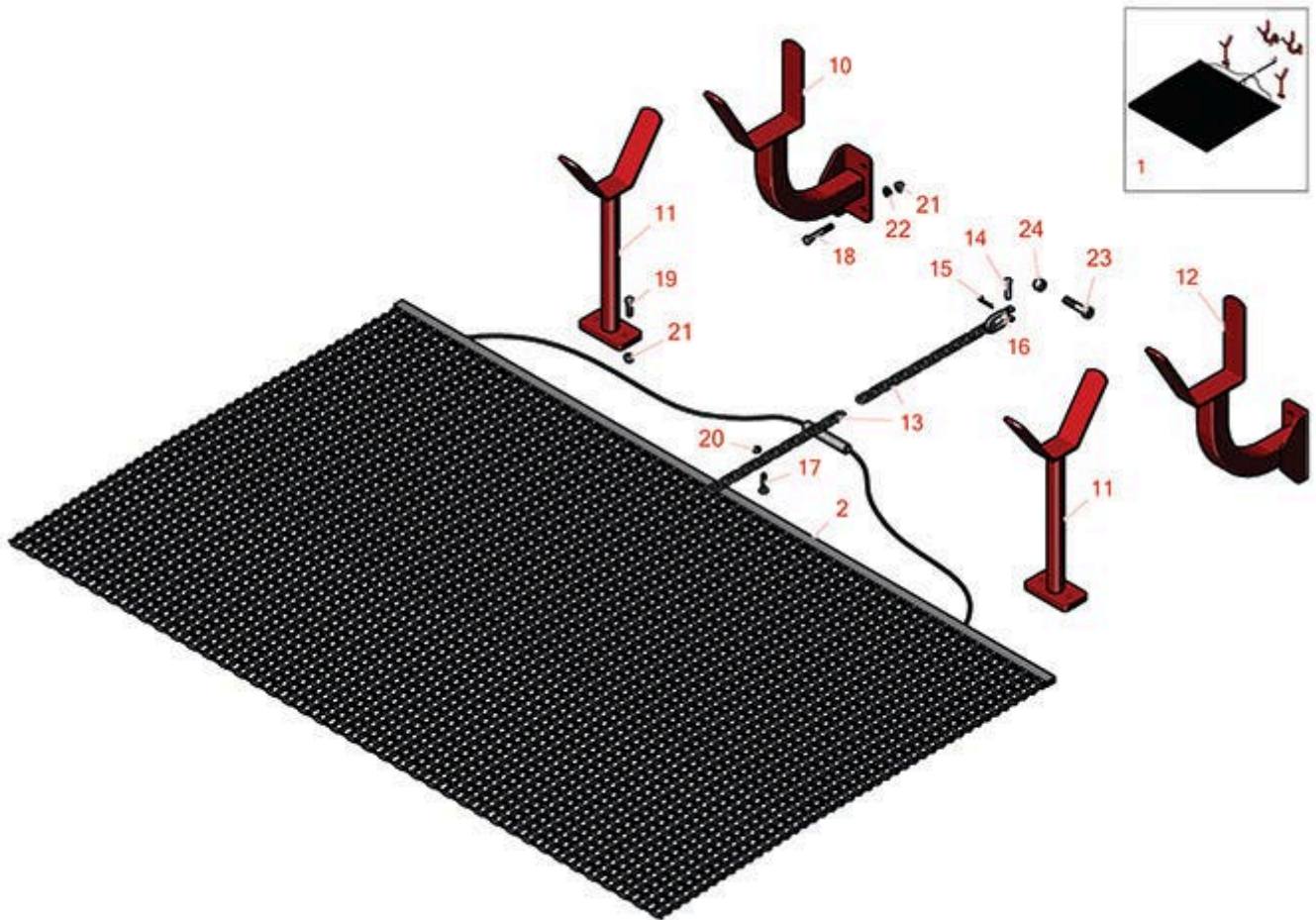




Replaces Toro Sand Pro 5020 Parts

Attachments

Drag Mat Kit - Model 08850



All original equipment manufacturers names and part numbers are used for identification purposes only, and we are in no way implying that our products are original equipment parts. Prices subject to change without notice.



Replaces Toro Sand Pro 5020 Parts

Attachments

Drag Mat Kit - Model 08850



Item No	R&R Part No.	OEM Part No.	Description	Qty Req	Order Quantity
---------	--------------	--------------	-------------	---------	----------------

Complete Mat System

1	R08850	08850	Steel Drag Mat w/Transport Stands - 6.5 ft x 6 ft	1	
---	---------------	-------	---	---	--

Detail Description: The Steel Drag Mat Kit with Transport Stands attachment is designed for bunker rakes with a standard mounting hitch to transport the 6.5' x 6' steel drag mat from one location to another by simply rolling up and placing in the rack. Steel drag mat and hardware included.:

Replacement Steel Mats

2	R20-4290	20-4290	Keystone Steel Drag Mat - 6.5' x 6'	1	
---	-----------------	---------	-------------------------------------	---	--

Detail Description: Perfectly level and smooth the surface on dirt, gravel, clay or sand. Ideal for top dressing and breaking up aerification plugs on golf course greens and fairways, dragging baseball fields and track surfaces, sand trap raking, and debris removal before laying sod or grass seed. Rust resistant. Reversible. Rolls up like carpet for easy cleaning. Mesh size 1" x 1", Crimp 3/8" deep x .046" thick, 13 gauge (.0915") galvanized steel rods. Wt. . Chain attached for pulling, 61 Lbs.:

Other Parts Available

10	R106-7073-01	106-7073-01	Mat Holder Assy - LH	1	
----	---------------------	-------------	----------------------	---	--

11	R28-0830-01	28-0830, 28-0830-01	Drag Holder Assy	2	
----	--------------------	------------------------	------------------	---	--

12	R99-1627-01	99-1627, 99-1627-01	Mat Holder Assy - RH	1	
----	--------------------	------------------------	----------------------	---	--

13	R2820-2	2820-2	Chain	1	
----	----------------	--------	-------	---	--

14	R283-10	100292, 283-10	Pin - Clevis	1	
----	----------------	-------------------	--------------	---	--

15	R3290-250	30-9030, 3290-250, 3290-34, 3290-755	Pin - Hair	1	
----	------------------	---	------------	---	--

16	R5-2942	5-2942	Shackle	1	
----	----------------	--------	---------	---	--

17	R32122-35	32122-35	Screw 5/16-18x1.5 - Rnd Slotted	1	
----	------------------	----------	---------------------------------	---	--

All original equipment manufacturers names and part numbers are used for identification purposes only, and we are in no way implying that our products are original equipment parts. Prices subject to change without notice.



Replaces Toro Sand Pro 5020 Parts

Attachments

Drag Mat Kit - Model 08850



Item No	R&R Part No.	OEM Part No.	Description	Qty Req	Order Quantity
18	R101526	01-150-0970, 01-178-0620, 20-53-AGD, 321-11, 3224-8, 323-11, 323-12, 323-31, 323-4, 323-47	Bolt - Hex HD 3/8-16 x 2-1/2 GR5	4	
18	R400120	01-150-0990, 01-178-0416, 02-150-0990, 321-11, 3222-4, 33114-010, 33114-060, 513327, 908470	Bolt - Hex HD 1/4-20 x 2	4	
18	R3234-34	321-11, 323-12, 3234-34	Bolt - Hex Washer 1/4 x 2	4	
19	R400264	01-150-0180, 01-178-0610, 20-48-AD, 20-48-AGD, 32-9160, 3224-3, 323-29, 323-7, 400264, 908035P	Bolt - Hex HD 3/8-16 x 1-1/4	4	
20	R3296-29	1-804256, 3290-357, 3296-29, 915662P	Locknut - 5/16-18 ESNA	1	

All original equipment manufacturers names and part numbers are used for identification purposes only, and we are in no way implying that our products are original equipment parts. Prices subject to change without notice.



Replaces Toro Sand Pro 5020 Parts

Attachments

Drag Mat Kit - Model 08850



Item No	R&R Part No.	OEM Part No.	Description	Qty Req	Order Quantity
20	R32153-3	119-4038, 22-12-AJFD, 32127-35, 32146-5, 32153-3, 3296-18, 3296-29, 3296-31, N/A	Locknut - 5/16-18 ESNA Zinc	1	
21	R3296-39	32127-25, 32128-36, 3290-357, 3296-17, 3296-22, 3296-39, 915663P, 99-7443	Locknut - 3/8-16 Nylon	4	
22	R453011	01-166-0100, 01-166-0120, 01-166-0270, 01-166-0500, 01-166-0600, 01-166-0620, 132-4593, 2356-3, 237-12, 24-10-AD, 24-11-AD, 24-11-BD, 24-12-AD, 24-12-BD, 30-9310, 32-8190, 3256-24, 3256-3, 3256-36, 3256-4, 453011, 47-9950, 48-9220, 513458, 7-0052	Washer - Flat 3/8 SAE Y/Zinc	4	
23	R325-9	01-150-0920, 01-178-0818, 18-9540, 3226-5	Bolt - 1/2-13 x 2 1/4 Hex Head	6	

All original equipment manufacturers names and part numbers are used for identification purposes only, and we are in no way implying that our products are original equipment parts. Prices subject to change without notice.



Replaces Toro Sand Pro 5020 Parts

Attachments

Drag Mat Kit - Model 08850



Item No	R&R Part No.	OEM Part No.	Description	Qty Req	Order Quantity
23	R325-11	01-150-0330, 20-92-AGD, 325-11, 325-9	Bolt - Hex HD 1/2-13 x 2-3/4	6	
24	RF5003	32127-29, 32131-5, 32132-5, 3296-23	Locknut - ESNA 1/2-13	6	

All original equipment manufacturers names and part numbers are used for identification purposes only, and we are in no way implying that our products are original equipment parts. Prices subject to change without notice.