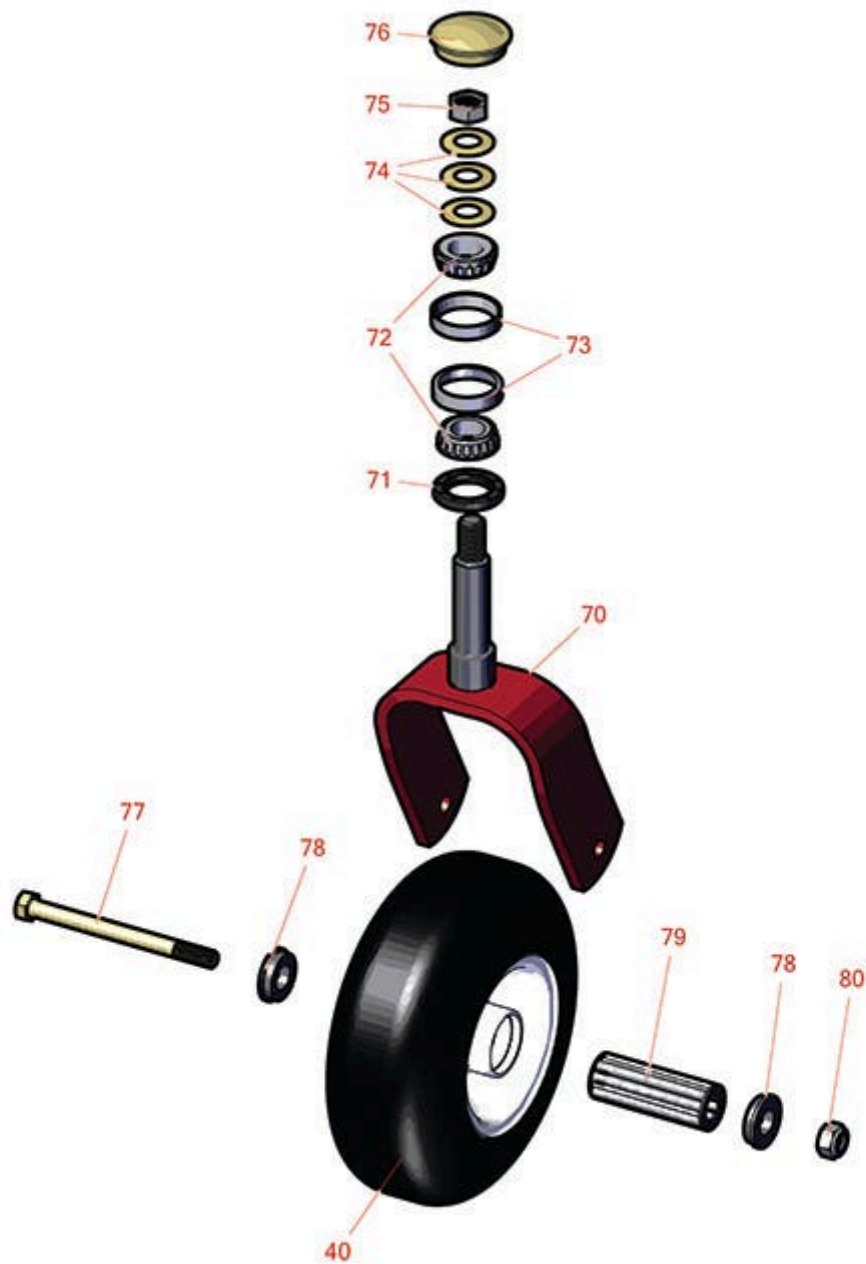




# Replaces Toro Proline Commercial Walk-Behind Mower Parts

Mower with 54in Floating Cutting Unit - 44427, 44454  
Caster Wheel



All original equipment manufacturers names and part numbers are used for identification purposes only, and we are in no way implying that our products are original equipment parts. Prices subject to change without notice.



# Replaces Toro Proline Commercial Walk-Behind Mower Parts

Mower with 54in Floating Cutting Unit - 44427, 44454  
Caster Wheel



Item No	R&R Part No.	OEM Part No.	Description	Qty Req	Order Quantity
---------	--------------	--------------	-------------	---------	----------------

## Tires & Wheels

40	<b>TIRES</b>		<a href="#">Click Here to View Complete Tire Selection</a>	0	
----	--------------	--	--	---	--

## Other Parts Available

70	<b>R121-7988-01</b>	121-7988-01	Fork - Caster	2	
71	<b>R1-543511</b>	1-543511	Seal- Grease	2	
72	<b>R254-94</b>	1-543509, 254-94, 32-8090, 32-8240, 32-9640, 40440, 62-3330	Tapered Bearing Cone	4	
73	<b>R254-72</b>	01-103-0050, 01-103-0120, 01-103-0140, 1-543508, 254-71, 254-72, 40439, 62-3340, 99-4511	Cup - Bearing	4	
74	<b>R1-633508</b>	1-633508	Washer - Spring Disc	6	
75	<b>R3296-51</b>	3296-51, 3296-81	Nut - Nylon Lock 3/4-10 Gr 8	2	
76	<b>R103-4882</b>	103-4882	Grease Cap - Castor	2	
77	<b>R325-20</b>	01-150-1250, 01-178-0848, 325-20	Bolt - Hx HD 1/2-13 x 6	2	
78	<b>R1-513810</b>	1-513810	Flanged Bushing	4	
79	<b>R1-513809</b>	1-513809	Bearing - Roller 3/4 ID x 3 3/4 Long	2	

All original equipment manufacturers names and part numbers are used for identification purposes only, and we are in no way implying that our products are original equipment parts. Prices subject to change without notice.



# Replaces Toro Proline Commercial Walk-Behind Mower Parts

Mower with 54in Floating Cutting Unit - 44427, 44454  
Caster Wheel



Item No	R&R Part No.	OEM Part No.	Description	Qty Req	Order Quantity
80	R3296-25	30-3380, 32127-21, 32127-31, 3290-160, 3290-33, 3296-13, 3296-25, 3296-45, 329645	Locknut - 1/2-13 Heavy ESNA	2	

All original equipment manufacturers names and part numbers are used for identification purposes only, and we are in no way implying that our products are original equipment parts. Prices subject to change without notice.