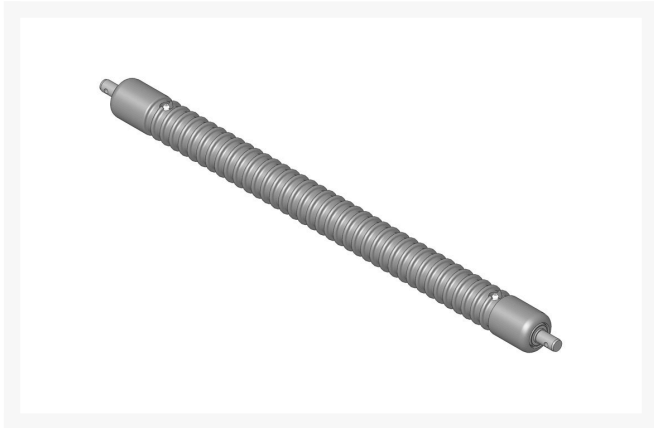




Roller - Grooved Machined Solid Steel

RAMT2785



Details

Machined from solid steel, this heavy weight roller uses greasable "water-pump" style bearings.

Replaces

| | |
|--------------|----------|
| John Deere | AMT2785 |
| R&R Products | RAMT2980 |

Specifications

| | |
|----------------------|--------------|
| Manufacturer | R&R Products |
| Roller Body Diameter | 2 in |
| Weight (lbs) | 18.5 lb |

Fits Models

John Deere 260B Walk-Behind Greens Mower
John Deere 260C Walk-Behind Greens Mower
John Deere 260SL Walk-Behind Greens Mower

Replacement Parts

| | |
|----------|------------------|
| RAA35741 | Bearing |
| R302-5 | Fitting - Grease |

TURF MACHINERY SPARES LTD

3a Monument Way West Woking, GU21 5EN
01483 764467

<https://turfmachinery.rrproducts.com/>