



Quick Dam Sport Savers Mat - 6 ft x 6 ft

RSSM66-1



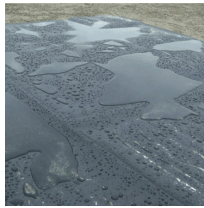
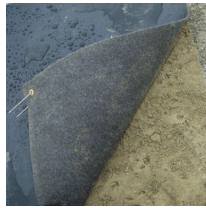
Details

Place into position before, during, or after it rains. Sport Savers mats cover problem areas such as the pitchers mound, home plate, bases, or in golf course bunkers. Place the absorbent side down to draw the moisture in and prevent mud buildup. Rubber side up collects water for easy draining. Grommets and stakes to secure in position included. Non-hazardous, non-toxic, and environmentally friendly. Reusable. 6' x 6'. Black.

- Quickly and easily collect water on athletic fields and golf courses
- Prevent mud buildup
- Absorbent side removes water while rubber barrier captures water for easy removal
- Hardware included
- Reusable

Specifications

Manufacturer	Quick Dam
Dimensions	6 ft x 6 ft



TURF MACHINERY SPARES LTD

3a Monument Way West Woking, GU21 5EN
01483 764467

<https://turfmachinery.rrproducts.com/>