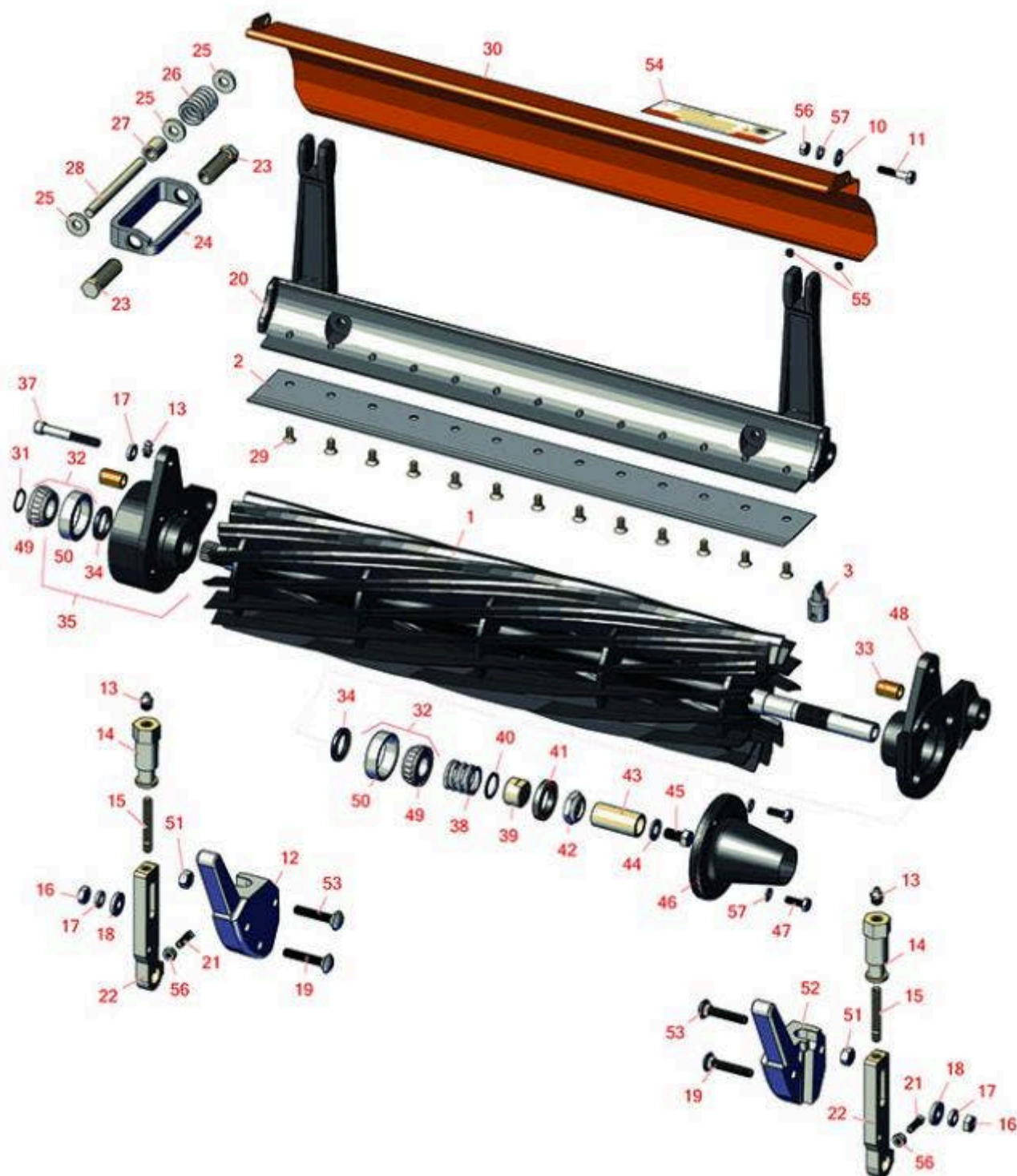




Replaces Jacobsen Eclipse 122 Parts

Cutting Unit
Reel & Bedknife



All original equipment manufacturers names and part numbers are used for identification purposes only, and we are in no way implying that our products are original equipment parts. Prices subject to change without notice.



Replaces Jacobsen Eclipse 122 Parts

Cutting Unit
Reel & Bedknife



| Item No | R&R Part No. | OEM Part No. | Description | Qty Req | Order Quantity |
|---------|--------------|--------------|-------------|---------|----------------|
|---------|--------------|--------------|-------------|---------|----------------|

R&R Reels, Lifetime Guaranteed

| | | | | | |
|---|-----------------|---------|-----------------|---|--|
| 1 | R4172945 | 4104640 | Reel - 11 Blade | 1 | |
|---|-----------------|---------|-----------------|---|--|

Detail Description: R&R Reel blades are expertly crafted from premium high carbon-boron alloy steel, heat-treated to perfectly complement both R&R and OEM bedknives. Each reel undergoes precision cylindrical grinding on bearing surfaces, followed by relief grinding for optimal performance. Advanced computer balancing ensures extended reel and bearing life. Backed by our lifetime guarantee against defects in materials and craftsmanship under normal use, R&R Reels deliver unmatched durability and cutting precision you can trust.:

R&R 22" Bedknives, Lifetime Guaranteed

| | | | | | |
|---|----------------|---|-------------------------------|---|--|
| 2 | R503478 | 101260, 503028, 503478, 549504 | Bedknife - Thin .125-.219 HOC | 1 | |
|---|----------------|---|-------------------------------|---|--|

Detail Description: R&R Bedknives are manufactured from high carbon-boron alloy steel and then hardened to RC46-49 to match the temper of our reel blades and original equipment reels. Bedknives are surface ground on the top and front edge and straightened three times before being packaged with oil for rust prevention. All R&R Bedknives now have an increased front edge grind for added life. All R&R Bedknives are guaranteed against defects in material and workmanship under normal use for the life of the part.:

| | | | | | |
|---|----------------|---|--------------------------------|---|--|
| 2 | R503477 | 101261, 503027, 503477, 549397 | Bedknife - Thick .156-.438 HOC | 1 | |
|---|----------------|---|--------------------------------|---|--|

Detail Description: R&R Bedknives are manufactured from high carbon-boron alloy steel and then hardened to RC46-49 to match the temper of our reel blades and original equipment reels. Bedknives are surface ground on the top and front edge and straightened three times before being packaged with oil for rust prevention. All R&R Bedknives now have an increased front edge grind for added life. All R&R Bedknives are guaranteed against defects in material and workmanship under normal use for the life of the part.:

R&R 22" Razor Tool Steel Bedknives, Lifetime Guaranteed

| | | | | | |
|---|----------------|--|--|---|--|
| 2 | R101520 | | Bedknife - Razor Tool Steel - 22 Micro Cut | 1 | |
|---|----------------|--|--|---|--|

All original equipment manufacturers names and part numbers are used for identification purposes only, and we are in no way implying that our products are original equipment parts. Prices subject to change without notice.



Replaces Jacobsen Eclipse 122 Parts

Cutting Unit
Reel & Bedknife



| Item No | R&R Part No. | OEM Part No. | Description | Qty Req | Order Quantity |
|---------|--------------|--------------|-------------|---------|----------------|
|---------|--------------|--------------|-------------|---------|----------------|

Detail Description: R&R Razor bedknives are manufactured from premium alloy tool steel steel and then hardened to RC48-51 to match the temper of our Razor reel blades and original equipment premium series reels. Bedknives are surface ground on the top and front edge and specially packaged for rust prevention. All R&R Bedknives now have an increased front edge grind for added life. All R&R Bedknives are guaranteed against defects in material and workmanship under normal use for the life of the part. You can expect up to double the life over standard bedknives.:

| | | | | | |
|---|----------------|--|--|---|--|
| 2 | R101521 | | Bedknife - Razor Tool Steel - 22 Tournament Cut | 1 | |
|---|----------------|--|--|---|--|

Detail Description: R&R Razor bedknives are manufactured from premium alloy tool steel steel and then hardened to RC48-51 to match the temper of our Razor reel blades and original equipment premium series reels. Bedknives are surface ground on the top and front edge and specially packaged for rust prevention. All R&R Bedknives now have an increased front edge grind for added life. All R&R Bedknives are guaranteed against defects in material and workmanship under normal use for the life of the part. You can expect up to double the life over standard bedknives.:

Service Tools

| | | | | | |
|---|-----------------|--|----------------------------|---|--|
| 3 | R101272T | | Bedknife Screw Driver Tool | 0 | |
|---|-----------------|--|----------------------------|---|--|

Tech Note: Easily install and remove bed knife screws with the help of a ratchet. Tool manufactured with hardened alloy steel.:

Detail Description: Easily install and remove bed knife screws with the help of a ratchet. Tool manufactured with hardened alloy steel.:

Other Parts Available

| | | | | | |
|----|----------------|--|------------------------------|---|--|
| 10 | R453023 | 453023 | Washer - Flat 1/4 | 2 | |
| 11 | R400112 | 400112, 400114 | Bolt - Hex HD 1/4-20 x 1-1/4 | 2 | |
| 12 | R241827 | 241827, 446136 | Bracket - LH Grass Catcher | 1 | |
| 13 | R302-5 | 302-5, 471214, 471223, 471226 | Fitting - Grease | 2 | |

All original equipment manufacturers names and part numbers are used for identification purposes only, and we are in no way implying that our products are original equipment parts. Prices subject to change without notice.



Replaces Jacobsen Eclipse 122 Parts

Cutting Unit
Reel & Bedknife



| Item No | R&R Part No. | OEM Part No. | Description | Qty Req | Order Quantity |
|---------|--------------|--|----------------------------------|---------|----------------|
| 14 | R365009 | 3005692, 365009, 365170, 441674 | Knob - Adjusting Roller | 2 | |
| 15 | R343616 | 343616, 443102 | Stud | 2 | |
| 16 | R443106 | 443106 | Nut - 5/16-18 Y/Zinc Plated | 2 | |
| 17 | R446136 | 446134, 446136 | Washer - Lock 5/16 Zinc | 2 | |
| 18 | R364441 | 364441, 366641 | Washer - Flat 5/16x7/8 | 2 | |
| 19 | R441674 | 441674 | Screw - 5/16-18 x 1-3/4 Carriage | 2 | |
| 20 | R5000457 | 5000457 | Bed Bar - 22 in | 1 | |
| 21 | R352737 | 352737 | Screw - Set 1/4 x 7/8 Sq Head | 2 | |
| 22 | R2000072 | 2000072, 471219 | Bracket - Roller | 2 | |
| 23 | R366726 | 366726 | Bolt - Special - Bed Knife Adj. | 4 | |
| 24 | R3001600 | 3001600, 412017 | Block - Bedknife Adjusting | 2 | |
| 25 | R366653 | 366653 | Spacer | 6 | |
| 26 | R366709 | 366709 | Spring | 2 | |
| 27 | R367512 | 367512 | Spacer - Bedknife Adj | 2 | |
| 28 | R366727 | 352437, 366727 | Rod - Bedknife Block | 2 | |
| 29 | R101272 | 101272, 3009138, 402578, 800813 | Screw - Bedknife 1/4-20 x 1/2 | 13 | |
| 30 | R4139660 | 4139660 | Grass Shield - 22 in | 1 | |

All original equipment manufacturers names and part numbers are used for identification purposes only, and we are in no way implying that our products are original equipment parts. Prices subject to change without notice.



Replaces Jacobsen Eclipse 122 Parts

Cutting Unit
Reel & Bedknife



| Item No | R&R Part No. | OEM Part No. | Description | Qty Req | Order Quantity |
|---|-----------------|-------------------------------|-----------------------------------|---------|----------------|
| 30 | R5003183 | 5003183 | Grass Shield - 22 in | 1 | |
| 31 | R458013 | 458013 | Ring - Retaining | 1 | |
| 32 | R500534 | 500534, R500534 | Bearing - with Cup | 1 | |
| <i>Detail Description: Kit includes: 1 ea R254-78- Bearing Cone & R254-79 Bearing Cone:</i> | | | | | |
| 33 | R545940 | 2500759, 545940 | Bushing | 1 | |
| 34 | R366650 | 366650 | Seal | 1 | |
| 35 | R1000447 | 1000447 | Bearing Housing - RH | 1 | |
| <i>Detail Description: Includes R545940, R366650, R254-79 & R302-5:</i> | | | | | |
| 37 | R4105360 | 4105360 | Bolt - Soc HD Cap 5/16-18 x 2-1/4 | 3 | |
| 38 | R363047 | 348846, 363047 | Spring - Reel | 1 | |
| 39 | R364900 | 364900 | Nut - Reel Tension | 1 | |
| 40 | R304745 | 304745 | Washer - Reel | 1 | |
| 41 | R364170 | 364170, 366648 | Seal | 1 | |
| 42 | R3296-15 | 3296-15, 367029, 444742 | Locknut - 3/4-16 Nylon Jam | 1 | |
| 43 | R367164 | 367164 | Spacer - Reel | 1 | |
| 44 | R453011 | 453011 | Washer - Flat 3/8 SAE Y/Zinc | 1 | |
| 45 | R400294 | 400294 | Screw - 3/8 24 x 3/4 Hex C/Zinc | 1 | |
| 46 | R338675 | 338675, 557775 | Cover - Shaft End | 1 | |
| 47 | R321-4 | 321-4, 400108 | Bolt - Hex HD 1/4-20 x 3/4 | 2 | |

All original equipment manufacturers names and part numbers are used for identification purposes only, and we are in no way implying that our products are original equipment parts. Prices subject to change without notice.



Replaces Jacobsen Eclipse 122 Parts

Cutting Unit
Reel & Bedknife



| Item No | R&R Part No. | OEM Part No. | Description | Qty Req | Order Quantity |
|---|-----------------|---|---------------------------------|---------|----------------|
| 48 | R1000446 | 1000446 | Bearing Housing - LH | 1 | |
| 49 | R254-78 | 254-78, 385174, 4121174, 4135152 | Tapered Bearing Cone | 1 | |
| 50 | R254-79 | 254-79, 4121175 | Cup - Bearing | 1 | |
| <i>Detail Description: Use R254-79M installation mandrel to properly install race.:</i> | | | | | |
| 51 | R444718 | 444718 | Nut - 5/16-18 Center Lock YZ | 4 | |
| 52 | R241828 | 241828, 453023 | Bracket - RH Grass Catcher | 1 | |
| 53 | R441677 | 441677 | Bolt - Carriage 5/16-18 x 1-1/2 | 4 | |
| 54 | R354083 | 354083, 361877, 4127335 | Decal - Danger | 2 | |
| 55 | R3008974 | 3008974 | Rubber Bumper | 4 | |
| 56 | R443102 | 443102 | Nut - 1/4-20 Yellow Zinc | 4 | |
| 57 | R3253-3 | 3253-3, 446128, 446130 | Washer - Lock 1/4 | 2 | |

All original equipment manufacturers names and part numbers are used for identification purposes only, and we are in no way implying that our products are original equipment parts. Prices subject to change without notice.