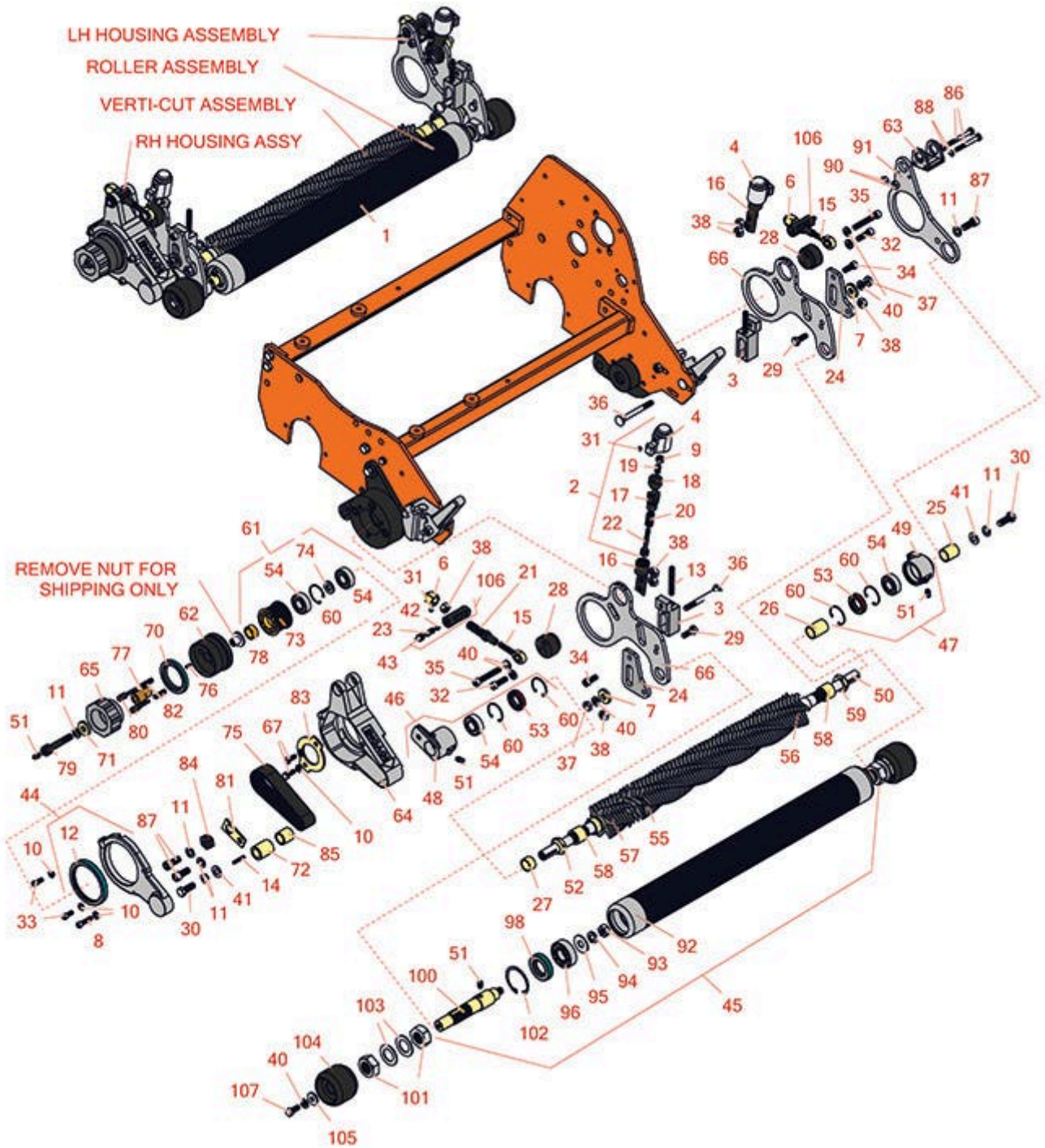




# Replaces Jacobsen Greens King 422

## Parts

Cutting Unit  
Groomer



All original equipment manufacturers names and part numbers are used for identification purposes only, and we are in no way implying that our products are original equipment parts. Prices subject to change without notice.



# Replaces Jacobsen Greens King 422

## Parts

Cutting Unit  
Groomer



Item No	R&R Part No.	OEM Part No.	Description	Qty Req	Order Quantity
<b>Groomer Kits</b>					
1	<b>R101110</b>	68624	Groomer Assy - Fits 18 in Units	0	
1	<b>R101111</b>	68624	Groomer Assy - Fits 22 in Units	0	
1	<b>R101112</b>	68624	Groomer Assy - Fits 26 in Units	0	
<b>Other Parts Available</b>					
2	<b>R163761</b>	163761	Knob - Quick Hgt Adj	2	
3	<b>R164050</b>	164050	Adjusting Block Assy - R.H.	1	
3	<b>R164051</b>	164051	Adjusting Block Assy - L.H.	1	
4	<b>R271919</b>	271919	Knob - Fits Groomer	2	
6	<b>R3005108</b>	3005108	Knob - Roller Adjusting	2	
7	<b>R310103</b>	310103	Spacer	2	
8	<b>R316796</b>	316796, 434029	Bolt - Allen HD 1/4-20 x 1	2	
9	<b>R32152-4</b>	32152-4, 444708	Locknut - 1/4-20 All Metal	2	
10	<b>R3253-3</b>	3253-3, 446128, 446130	Washer - Lock 1/4	3	
11	<b>R3254-6</b>	3254-6, 446140, 446142	Washer - Lock 3/8	2	
12	<b>R338752</b>	338752	Seal	1	
13	<b>R343616</b>	343616, 443102	Stud	2	
14	<b>R345556</b>	345556	Key - Sq 1/8 x 1	1	

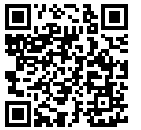
All original equipment manufacturers names and part numbers are used for identification purposes only, and we are in no way implying that our products are original equipment parts. Prices subject to change without notice.



# Replaces Jacobsen Greens King 422

## Parts

Cutting Unit  
Groomer



Item No	R&R Part No.	OEM Part No.	Description	Qty Req	Order Quantity
15	<b>R365247</b>	365247	Rod End	2	
16	<b>R365265</b>	365265	Adj. Link - Fits Groomer	2	
17	<b>R365266</b>	365266	Bolt - Groomer Adjusting	2	
18	<b>R365267</b>	365267	Plunger - Fits Groomer	2	
19	<b>R365268</b>	365268	Spring - Stainless - Knob Assy	2	
20	<b>R365269</b>	365269	Spring - Stainless - Knob Assy	2	
21	<b>R365270</b>	365270	Bolt - Groomer Adjusting	2	
22	<b>R365271</b>	365271	Bolt	2	
23	<b>R365291</b>	365291	Spring - Fits Groomer Pin Assy	2	
24	<b>R366658</b>	366658	Link - Roller Adjusting	2	
25	<b>R366660</b>	366660	Spacer - .875 x .630 x 1	1	
26	<b>R366661</b>	366661	Spacer - .875 x .630 x 1.25	2	
27	<b>R367165</b>	367165	Spacer - .875 OD x .630 ID x .532	1	
28	<b>R367166</b>	367166	Cam - Fits Groomer Adj Assy	2	
29	<b>R400186</b>	400186	Bolt - Hex HD 5/16-18 x 7/8	2	
30	<b>R400298</b>	400298	Bolt - Hex HD 3/8-24 x 1	2	
31	<b>R422502</b>	422502	Set Screw - 1/4-20 x 1/4 Nyloc	4	
32	<b>R434004</b>	434003, 434004	Screw - Soc HD 5/16-18 x 1	2	
33	<b>R434011</b>	434011	Bolt - Soc HD Cap 1/4-20 x 5/8	1	
34	<b>R434024</b>	434024	Bolt - Soc HD Cap 5/16-18 x 3/4	2	
35	<b>R434049</b>	434049	Bolt - Soc HD Cap 5/16-18 x 2	2	

All original equipment manufacturers names and part numbers are used for identification purposes only, and we are in no way implying that our products are original equipment parts. Prices subject to change without notice.



# Replaces Jacobsen Greens King 422

## Parts

Cutting Unit  
Groomer



Item No	R&R Part No.	OEM Part No.	Description	Qty Req	Order Quantity
36	<b>R441687</b>	441687	Bolt - Carriage 5/16-18 x 3	1	
36	<b>R441688</b>	441688	Bolt - Carriage 5/16-18 x 3-1/2	1	
37	<b>R443106</b>	443106	Nut - 5/16-18 Y/Zinc Plated	2	
38	<b>R444718</b>	444718	Nut - 5/16-18 Center Lock YZ	6	
40	<b>R446136</b>	446134, 446136	Washer - Lock 5/16 Zinc	6	
41	<b>R453011</b>	453011	Washer - Flat 3/8 SAE Y/Zinc	2	
42	<b>R465006</b>	465006	Steel Ball - 5/16	2	
43	<b>R471219</b>	366852, 471219	Zerk - Grease	2	
44	<b>R132214</b>	132214	Cover and Seal Assy	1	
45	<b>R100115</b>		Groomer Roller - 22 in	1	
<i>Tech Note: Note: 2 1/2 in Dia w/1/4 Spacing:</i>					
45	<b>R100116</b>		Groomer Roller - 18 in	1	
<i>Tech Note: Note: 2 1/2 in Dia w/1/4 Spacing:</i>					
45	<b>R100117</b>		Groomer Roller - 26 in	1	
<i>Tech Note: Note: 2 1/2 in Dia w/1/4 Spacing:</i>					
46	<b>R132210</b>	132210	Bearing Housing Assy	1	
47	<b>R132211</b>	132211	Bearing Housing Assy	1	
48	<b>R241807</b>	241807	Bearing Housing	1	
49	<b>R241808</b>	241808	Bearing Housing	1	
50	<b>R3000782</b>	3000782	Shaft - Fits 18 Groomer	1	
50	<b>R390857</b>	390857	Shaft - Fits 22 Groomer	1	

All original equipment manufacturers names and part numbers are used for identification purposes only, and we are in no way implying that our products are original equipment parts. Prices subject to change without notice.



# Replaces Jacobsen Greens King 422

## Parts

Cutting Unit  
Groomer



Item No	R&R Part No.	OEM Part No.	Description	Qty Req	Order Quantity
50	<b>R3000781</b>	3000781	Shaft - Fits 26 in Groomer	1	
51	<b>R302-5</b>	302-5, 471214, 471223, 471226	Fitting - Grease	3	
52	<b>R3296-15</b>	3296-15, 367029, 444742	Locknut - 3/4-16 Nylon Jam	1	
53	<b>R336962</b>	336962	Seal	2	
54	<b>R365229</b>	365229	Bearing	2	
55	<b>R365230</b>	365230	Verti-Cut Blade - 2-1/2 Dia.	0	
<i>Tech Note: Blade Requirements: 71 blades for 22" groomers, 58 Blades for 18" groomers and 49 blades for 26" groomers :</i>					
56	<b>R365234</b>	365234	Spacer - 1 1/16 x .467	48	
57	<b>R365236</b>	365236	Spacer - 1 1/16 x .247	59	
<i>Tech Note: Fits 22":</i>					
58	<b>R367161</b>	367161	Spacer - 1 OD x .75	2	
59	<b>R3220-7</b>	443832	Nut - 3/4-16 Jam Zinc	1	
60	<b>R458461</b>	458461	Snap Ring	4	
61	<b>R132212</b>	132212	Pulley Assy - Incl Bearing	1	
62	<b>R163776</b>	163776	Pulley Assy - Incl Seal	1	
63	<b>R2000088</b>	2000088	Pivot Block - Fits Groomer	1	
64	<b>R220316</b>	220316	Belt Housing - Groomer	1	
65	<b>R241817</b>	241817	Knob - Clutch	1	
66	<b>R3002692</b>	3002692	Bracket - Roller Mounting	2	

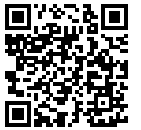
All original equipment manufacturers names and part numbers are used for identification purposes only, and we are in no way implying that our products are original equipment parts. Prices subject to change without notice.



# Replaces Jacobsen Greens King 422

## Parts

*Cutting Unit  
Groomer*



Item No	R&R Part No.	OEM Part No.	Description	Qty Req	Order Quantity
67	<b>R321-4</b>	321-4, 400108	Bolt - Hex HD 1/4-20 x 3/4	2	
70	<b>R338768</b>	338768	Seal - Oil	1	
71	<b>R363841</b>	363841	Washer - Groomer Clutch	1	
72	<b>R365227</b>	365227	Pulley - 16 Grooved	1	
73	<b>R365228</b>	365228	Drive Pulley	1	
74	<b>R365232</b>	365232	Spacer - Drive Pulley	1	
75	<b>R365235</b>	365235	Belt - Timing Fits 2-1/2 Groomers	1	
76	<b>R365239</b>	365239	Key - 1/8 x 1/8 x 7/16	1	
77	<b>R365254</b>	365254	Shaft - Stub - Clutch	1	
78	<b>R365256</b>	365256	Spacer - Pulley .875 x .630 x .406	1	
79	<b>R365257</b>	365257	Bolt - Special Groomer Clutch	1	
80	<b>R365258</b>	365258	Pin - Clutch	2	
81	<b>R365260</b>	365260	Link - Belt Adjusting	1	
82	<b>R365272</b>	365272	Spring - Clutch	2	
83	<b>R366659</b>	366659	Clamp - Groomer	1	
84	<b>R367162</b>	367162	Belt Tensioner - Eccentric	1	
85	<b>R367163</b>	367163	Spacer - .875 x .630 x .880	1	
86	<b>R400120</b>	400120	Bolt - Hex HD 1/4-20 x 2	2	
87	<b>R434030</b>	434030	Bolt - Soc HD Cap 3/8-16 x 7/8	3	
88	<b>R447212</b>	447212	Lockwasher - 1/4 Internal Tooth	2	
90	<b>RP570-3</b>	443802	Nut - 1/4-20 Hex Jam Zinc	2	

All original equipment manufacturers names and part numbers are used for identification purposes only, and we are in no way implying that our products are original equipment parts. Prices subject to change without notice.



# Replaces Jacobsen Greens King 422

## Parts

Cutting Unit  
Groomer



Item No	R&R Part No.	OEM Part No.	Description	Qty Req	Order Quantity
91	<b>R340464</b>	340464	Bracket - Fits Groomer Mounting	1	
92	<b>R390899</b>	390899	Roller Tube - Grooved 2.5 x 22 - 1/4 in Spacing	1	
<i>Tech Note: Note: W/ 1/4 Spacing:</i>					
92	<b>R3000784</b>	3000784	Roller Tube - Grooved 2.5 x 18	1	
<i>Tech Note: Note: W/ 1/4 Spacing:</i>					
92	<b>R3000783</b>	3000783	Roller Tube - Grooved 2.5 x 26	1	
<i>Tech Note: Note: W/ 1/4 Spacing:</i>					
93	<b>R443816</b>	443816	Nut - 7/16-20 Hex Jam	2	
94	<b>R446146</b>	446146, 446148	Lock Washer - 7/16	2	
95	<b>R453013</b>	452008, 453013	Washer - Flat 7/16	2	
96	<b>R365330</b>	365330	Bearing	2	
98	<b>R338773</b>	338773	Seal	2	
100	<b>R338772</b>	338772	Shaft - Roller - RH	1	
100	<b>R340465</b>	340465	Shaft - Roller - LH	1	
101	<b>R264</b>	443836	Nut - Jam Hardened 7/8-14	4	
102	<b>R458113</b>	458113	Ring - Snap Fits Groomer	2	
103	<b>R365409</b>	365409	Spacer - Wheel	4	
104	<b>R365343</b>	365343	Wheel - Anti Scalp	2	
105	<b>R364441</b>	364441, 366641	Washer - Flat 5/16x7/8	2	

All original equipment manufacturers names and part numbers are used for identification purposes only, and we are in no way implying that our products are original equipment parts. Prices subject to change without notice.



# Replaces Jacobsen Greens King 422

## Parts

*Cutting Unit  
Groomer*



Item No	R&R Part No.	OEM Part No.	Description	Qty Req	Order Quantity
106	<b>R3003401</b>	3003401, 3003969	Pin - Fits Groomer	2	
107	<b>R400184</b>	400184, 400194	Screw - 5/16-18 x 3/4 Hex	2	

All original equipment manufacturers names and part numbers are used for identification purposes only, and we are in no way implying that our products are original equipment parts. Prices subject to change without notice.