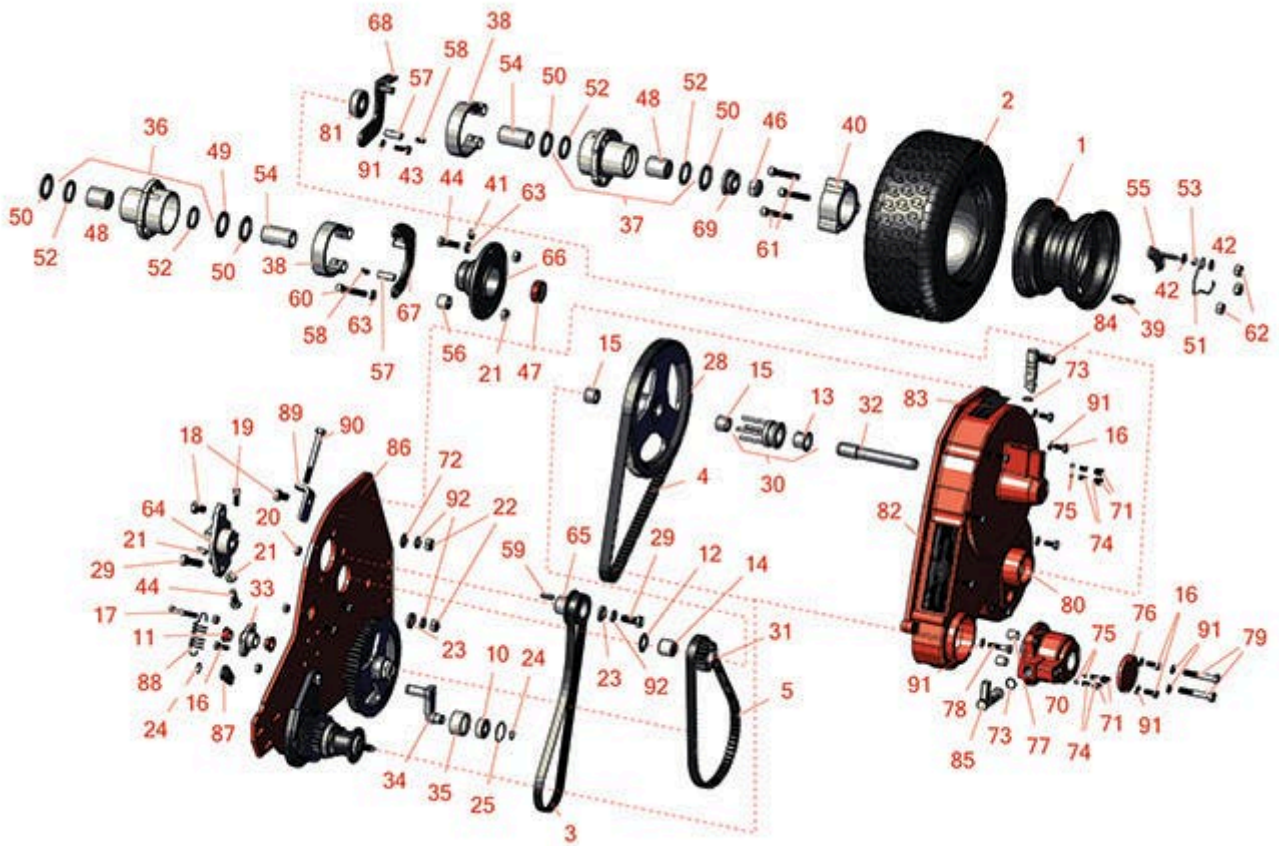




Replaces Jacobsen Greens King 422

Parts

*Traction Unit
Drive Housing*



All original equipment manufacturers names and part numbers are used for identification purposes only, and we are in no way implying that our products are original equipment parts. Prices subject to change without notice.



Replaces Jacobsen Greens King 422

Parts

Traction Unit

Drive Housing



Item No	R&R Part No.	OEM Part No.	Description	Qty Req	Order Quantity
Tires					
1	R5002905	5002905	Wheel Assy - 3x5	2	
2	RCT5110101	554847	Tire - 11x4.00-5 Nhs (2 Ply) Carlisle Turf Saver	2	
Belts					
3	R2810713	2810713	Belt - 7 Rib Micro V	1	
4	R5001124	2811363	Belt - 112 Tooth .460 Wide	1	
5	R5002403	2811071	Belt - 80 Tooth x 17mm WIDE(.669)	1	
Other Parts Available					
10	R344545	344545	Bearing - Roller Brush Brkt	1	
11	R352936	352936	Bushing - Bronze	2	
12	R359864	359864	Flat Washer - Hardened 5/8 x 1.100	0	
13	R366725	366725	Bushing - Flanged	1	
14	R367553	367553	Bearing - Needle	1	
15	R367554	367554	Bearing - Needle	2	
16	R400106	400106	Bolt - Hex HD 1/4-20 x 5/8	12	
17	R400116	400116	Bolt - Hex HD 1/4-20 x 1-1/2	1	
18	R400254	400254	Bolt - Hex HD 3/8-16 x 1/2	2	
19	R434031	434031	Bolt - Soc HD Cap 1/4-20 x 3/4 Nyloc	1	
20	R443102	443102	Nut - 1/4-20 Yellow Zinc	10	
21	R443106	443106	Nut - 5/16-18 Y/Zinc Plated	3	
22	R443110	306562, 443110, 444762	Nut - 3/8-16 Hex	2	

All original equipment manufacturers names and part numbers are used for identification purposes only, and we are in no way implying that our products are original equipment parts. Prices subject to change without notice.



Replaces Jacobsen Greens King 422

Parts

Traction Unit

Drive Housing



Item No	R&R Part No.	OEM Part No.	Description	Qty Req	Order Quantity
23	R366653	366653	Spacer	2	
24	R458006	458006	Ring - Retaining	2	
25	R458105	458105	Ring - Retaining	1	
28	R503685	503685	Pulley - 80 Tooth	1	
29	RF3205	400188, 400262	Bolt - Hex HD 3/8-16 x 1	2	
30	R1000056	1000056	Traction Clutch	1	
<i>Tech Note: Includes R366725:</i>					
31	R5002447	5002447	Pulley - 18 Tooth	1	
32	R3001273	3001273	Shaft - Belts	1	
33	R2810550	2810550	Bracket - Idler	1	
34	R2809665	2809665	Idler - Arm	1	
35	R2809666	2809666	Pulley - Belt Idler	1	
36	R1000476	1000476	Hub Assy - RH	1	
<i>Tech Note: Includes R338766 & R366705:</i>					
37	R1000477	1000477	Hub Assy - LH	1	
<i>Tech Note: Includes R338766 & R366705:</i>					
38	R164056	164056	Band - Brake	2	
39	R232-27	232-27, 360111	Stem - Valve w/ Cap	2	
40	R271920	271920	Spacer - Wheel	2	

All original equipment manufacturers names and part numbers are used for identification purposes only, and we are in no way implying that our products are original equipment parts. Prices subject to change without notice.



Replaces Jacobsen Greens King 422

Parts

Traction Unit

Drive Housing



Item No	R&R Part No.	OEM Part No.	Description	Qty Req	Order Quantity
41	R302-5	302-5, 471214, 471223, 471226	Fitting - Grease	1	
42	R453009	3256-23, 452004, 452006, 452008, 453009	Washer - Flat 5/16 SAE	12	
43	R321-4	321-4, 400108	Bolt - Hex HD 1/4-20 x 3/4	2	
44	R322-5	400188	Bolt - Hex HD 5/16-18 x 1	2	
46	R3296-33	444820, 445718, 445801	Locknut - 5/8-18 ESNA Jam	2	
47	R337678	337678, 365753	Seal - Clutch Shaft Bearing	1	
48	R338766	338766	Bearing - Clutch Differential Shaft	1	
49	R361451	361451	Flat Washer 1 x 1-1/2 Hardened Thrust	1	
50	R366697	366697	Spacer - Bronze Thrust	4	
51	R366704	366704	Spring - Wheel Lock	2	
52	R366705	366705	Seal - Grease	2	
53	R366716	366716	Spacer - Wheel	6	
54	R366717	366717	Clutch Sleeve - Wheel	2	
55	R366719	366719	Latch - Wheel	2	
56	R366737	366737	Spacer - Wheel	2	
57	R366742	366742	Pivot Pin w/Set Screw - Brake Band	2	
58	R415513	415513	Screw - Set 1/4-20 x 1/2 Cup Pt	2	

All original equipment manufacturers names and part numbers are used for identification purposes only, and we are in no way implying that our products are original equipment parts. Prices subject to change without notice.



Replaces Jacobsen Greens King 422

Parts

Traction Unit

Drive Housing



Item No	R&R Part No.	OEM Part No.	Description	Qty Req	Order Quantity
59	R367082	367082	Key - 3/16 Sq. x 3/4	1	
60	R434032	434032	Screw - Soc HD 5/16-18 x 1-3/4	2	
61	R434049	434049	Bolt - Soc HD Cap 5/16-18 x 2	6	
62	R444718	444718	Nut - 5/16-18 Center Lock YZ	6	
63	R446136	446134, 446136	Washer - Lock 5/16 Zinc	6	
64	R2000148	2000148	Bracket - Bearing	1	
65	R3007847	3007847	Pulley - 7 Rib Micro V	1	
66	R132658	132658	Housing - Parking Brake	1	
67	R132663	132663	Bracket - Brake Mounting RH	1	
68	R164063	164063	Bracket - Brake Mounting LH	1	
69	R366718	366716, 366718	Latching Collar - Wheel	2	
70	R220317	220317	Shifter Housing - Orange	1	
71	R250413	250413	Screw - Set 3/8-16 x 1/2	4	
72	R453011	453011	Washer - Flat 3/8 SAE Y/Zinc	2	
73	R339910	339910	O-Ring	2	
74	R343848	343848	Spring	4	
75	R343850	343850	Ball Bearing - 1/4	4	
76	R366710	366710	Cover	1	
77	R366715	366715	Spacer	2	
78	R400112	400112, 400114	Bolt - Hex HD 1/4-20 x 1-1/4	4	

All original equipment manufacturers names and part numbers are used for identification purposes only, and we are in no way implying that our products are original equipment parts. Prices subject to change without notice.



Replaces Jacobsen Greens King 422

Parts

Traction Unit

Drive Housing



Item No	R&R Part No.	OEM Part No.	Description	Qty Req	Order Quantity
79	R400196	400196	Bolt - Hex HD 5/16-18 x 2	2	
80	R503638	503638	Belt Cover - Orange	1	
81	RA203603	366707, A203603	Bearing	1	
82	R2811092	2811092	Decal - Warning	1	
83	R3001792	3001792	Decal - Reel Clutch	1	
84	R3000660	3000660	Traction Clutch Lever	1	
85	R3004402	3004402	Lever - Shifter Shaft	1	
86	R2811121	2811121	Frame - LH	1	
87	R2809667	2809667	Bracket - Idler - Spring	1	
88	R2809669	2809669	Spring - Idler	1	
89	R3009434	3009434	Bracket - Belt Adjusting	1	
90	R2500485	2500485	Bolt - Hex HD 5/16-18 x 3	1	
91	R3253-3	3253-3, 446128, 446130	Washer - Lock 1/4	14	
92	R3254-6	3254-6, 446140, 446142	Washer - Lock 3/8	1	

All original equipment manufacturers names and part numbers are used for identification purposes only, and we are in no way implying that our products are original equipment parts. Prices subject to change without notice.