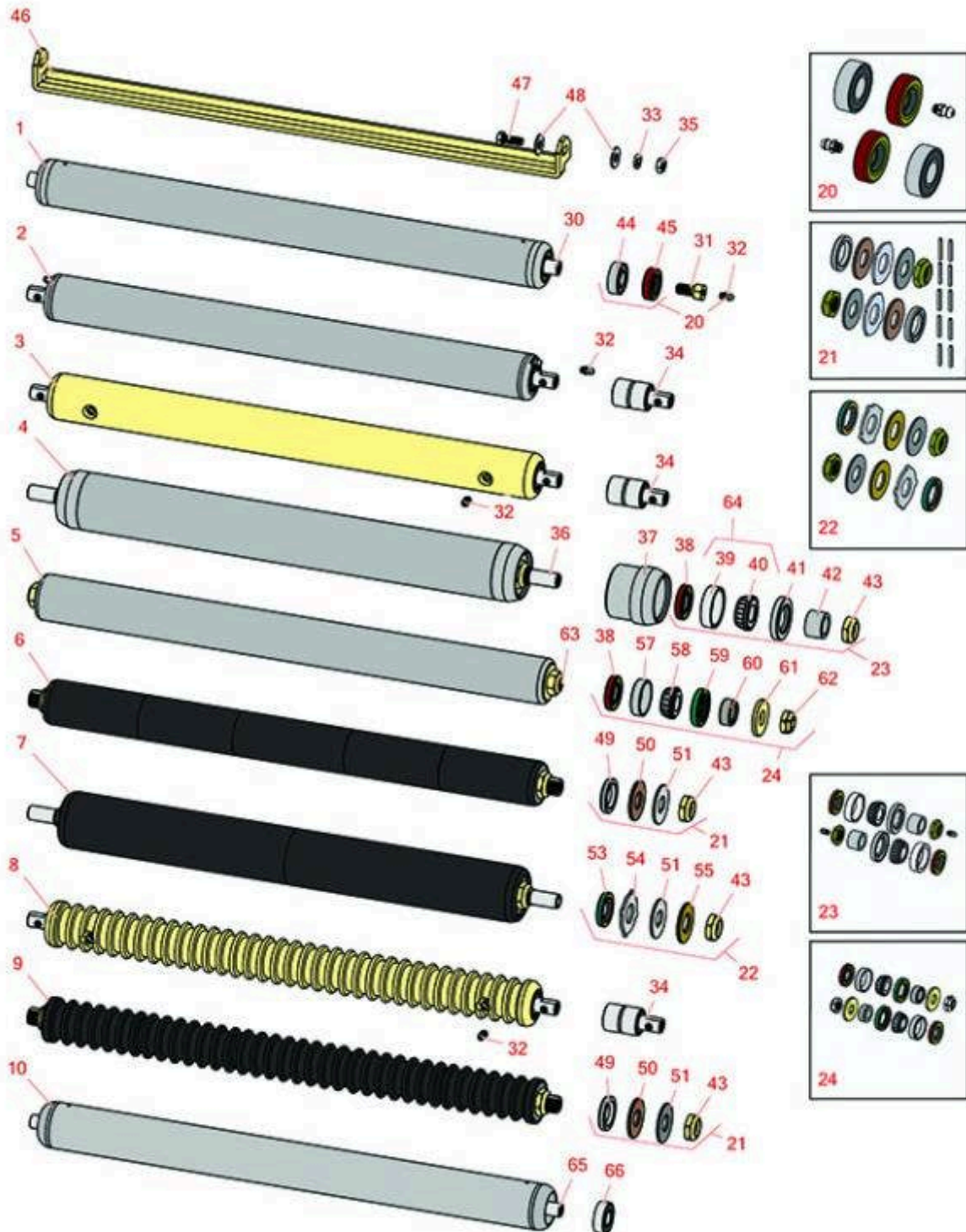




# Replaces Jacobsen Greens King IV Parts

Cutting Unit  
Rear Rollers

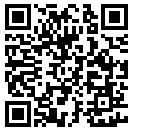


All original equipment manufacturers names and part numbers are used for identification purposes only, and we are in no way implying that our products are original equipment parts. Prices subject to change without notice.



# Replaces Jacobsen Greens King IV Parts

Cutting Unit  
Rear Rollers



Item No	R&R Part No.	OEM Part No.	Description	Qty Req	Order Quantity
<b>R&amp;R Rear Rollers</b>					
1	<b>R158777</b>	1004990, 158777, 162916	Roller - Smooth Tubular Steel	0	
<i>Tech Note: Constructed with a through shaft and greasable ball bearings.:</i>					
2	<b>R101125</b>		Roller - Smooth Tubular Steel	0	
<i>Tech Note: Constructed with "water-pump" style bearings.:</i>					
3	<b>R68597</b>	68597	Roller - Smooth Solid Steel	0	
<i>Tech Note: Machined from solid steel, this heavy weight roller uses greasable "water-pump" style bearings.:</i>					
4	<b>R100105</b>	100105, 1002446, 1003728	Roller - Smooth Heavy Duty Tubular Steel	0	
<i>Tech Note: Constructed with a through shaft, this heavy duty roller uses tapered bearings for extended life. This roller body measures 21" in length.:</i>					
5	<b>R1000770</b>	1000770	Roller - Smooth Heavy Duty Tubular Steel	0	
<i>Tech Note: Constructed with a through shaft, this heavy-duty roller uses tapered bearings for extended life. Body length measures 23-1/4".:</i>					
6	<b>R101335</b>		Roller - Smooth UHMW Polyethylene	0	
<i>Tech Note: Machined from solid UHMW, this low maintenance roller uses a 1" solid stainless steel shaft and requires no grease. UHMW material prevents build-up of debris.:</i>					
7	<b>R1013662</b>		Roller - Smooth UHMW Polyethylene	0	
<i>Tech Note: Machined from solid UHMW, this low maintenance roller uses a 1" solid stainless steel shaft and requires no grease. UHMW material prevents build-up of debris.:</i>					
8	<b>R101120</b>	101120, 68580	Roller - Grooved Machined Solid Steel	0	

All original equipment manufacturers names and part numbers are used for identification purposes only, and we are in no way implying that our products are original equipment parts. Prices subject to change without notice.



# Replaces Jacobsen Greens King IV Parts

Cutting Unit  
Rear Rollers



Item No	R&R Part No.	OEM Part No.	Description	Qty Req	Order Quantity
---------	--------------	--------------	-------------	---------	----------------

*Tech Note: Machined from solid steel, this heavy weight roller uses greasable "water-pump" style bearings.:*

9	<b>R101337</b>		Roller - Grooved UHMW Polyethylene	0	
---	----------------	--	------------------------------------	---	--

*Tech Note: Machined from solid UHMW, this low maintenance roller rotates around a 1" solid stainless steel shaft and requires no bearings or grease. Patented groove design and smooth UHMW material prevents build-up of debris. Shaft length measures 26-3/4":*

10	<b>R1004990</b>		Roller - Smooth Rear Steel	1	
----	-----------------	--	----------------------------	---	--

## Overhaul Kits

20	<b>R100130</b>	100130	Overhaul Kit - Roller	0	
----	----------------	--------	-----------------------	---	--

*Tech Note: Includes 2 ea.: R302-5 Grease Fittings, R303558 Bearings, & R305115 Seals:*

21	<b>R101395</b>	100139, 101395	Overhaul Kit - UHMW Roller	0	
----	----------------	-------------------	----------------------------	---	--

*Tech Note: Fits all R&R 2" Dia. Black UHMW Polyethylene Rollers. Includes 10 ea.: R150322 Roll Pins; 2 ea.: R3296-15 Locknuts, R150347T Teflon Seals, R150333 Thrust Washers, & R150334A Bronze Thrust Washers:*

22	<b>R101399</b>		Overhaul Kit - UHMW 2 Pc Roller	1	
----	----------------	--	---------------------------------	---	--

*Tech Note: Fits all R&R 2-1/2" - 3-1/2" Dia. Black UHMW Plastic Rollers that do not use ball bearings.. Includes 2 ea.: R1503230 Star Washers, R1503470 Seals, R150333 Thrust Washers, R3296-15 Locknuts, R1503471 Bronze Thrust Washers:*

23	<b>R100136</b>		Overhaul Kit - Roller	0	
----	----------------	--	-----------------------	---	--

*Tech Note: Includes 2 ea.: R150674 Wear Sleeves, R253-152 Seals, R253-117 Seals, R254-78 Bearings, R254-79 Bearing Cups, R3296-15 Locknuts & R302-5 Grease Fittings:*

24	<b>R100139</b>		Overhaul Kit - Roller	0	
----	----------------	--	-----------------------	---	--

*Tech Note: Includes 2 ea.: R254-67 Bearing Cups, R254-68 Bearing Cones, R337593 Seals, R253-152 Seals R3001762 Wear Sleeves, R3000698 Washers & R445718 Locknuts:*

## Other Parts Available

All original equipment manufacturers names and part numbers are used for identification purposes only, and we are in no way implying that our products are original equipment parts. Prices subject to change without notice.



# Replaces Jacobsen Greens King IV Parts

Cutting Unit  
Rear Rollers



Item No	R&R Part No.	OEM Part No.	Description	Qty Req	Order Quantity
30	<b>R154909</b>	145909, 154909	Shaft - Rear Roller	1	
31	<b>R345470</b>	1002226, 345470	Bolt - Rear Roller 7/16-20	2	
<i>Tech Note: Incl. Grease Zerk:</i>					
31	<b>R1002224</b>	1002224	Bolt - Rear Roller 3/8-24	2	
<i>Tech Note: Incl Grease Zerk:</i>					
32	<b>R302-5</b>	302-5, 471214, 471223, 471226	Fitting - Grease	2	
33	<b>R446136</b>	446134, 446136	Washer - Lock 5/16 Zinc	12	
34	<b>R101482</b>	101482	Bearing - Rear Machined Roller	2	
35	<b>R443106</b>	443106	Nut - 5/16-18 Y/Zinc Plated	12	
36	<b>R100106</b>	100106	Shaft - Fits HD Rear Roller	1	
37	<b>R61-0380</b>		Roller End - Cap Solid	1	
38	<b>R253-152</b>	3001656	Seal - Inner Roller	2	
39	<b>R254-79</b>	254-79, 4121175	Cup - Bearing	2	
<i>Tech Note: Use R254-79M installation mandrel to properly install race.:</i>					
40	<b>R254-78</b>	254-78, 385174, 4121174, 4135152	Tapered Bearing Cone	2	
41	<b>R253-117</b>	253-117, 3004882	Seal - Outer Triple Lip	2	
42	<b>R150674</b>	150674	Sleeve - Wear 3/4 Plated	2	

All original equipment manufacturers names and part numbers are used for identification purposes only, and we are in no way implying that our products are original equipment parts. Prices subject to change without notice.



# Replaces Jacobsen Greens King IV Parts

Cutting Unit  
Rear Rollers



Item No	R&R Part No.	OEM Part No.	Description	Qty Req	Order Quantity
43	<b>R3296-15</b>	3296-15, 367029, 444742	Locknut - 3/4-16 Nylon Jam	2	
44	<b>R303558</b>	303558	Bearing - Roller	2	
45	<b>R305115</b>	305115	Seal - Roller	2	
46	<b>R338735</b>	338735	Scraper - Rear Roller	1	
47	<b>R400186</b>	400186	Bolt - Hex HD 5/16-18 x 7/8	2	
48	<b>R453009</b>	3256-23, 452004, 452006, 452008, 453009	Washer - Flat 5/16 SAE	4	
48	<b>R310266</b>	310266, 452004, 452006, 452008	Washer - Flat 5/16 USS	4	
49	<b>R150347T</b>		Seal - Nonstick Lip	2	
50	<b>R150334A</b>		Washer - Thrust SAE660 Bronze	2	
51	<b>R150333</b>		Washer - Flat Keyed Outer SS	2	
53	<b>R1503470</b>		Seal - Inner Wiper	2	
54	<b>R1503230</b>		Washer - Thrust Outer Keyed	2	
55	<b>R1503471</b>		Washer - Thrust SAE660 Bronze	2	
57	<b>R254-67</b>	307108, 5000625, 500625	Cup - Bearing	2	
58	<b>R254-68</b>	307109, 5000625, 500625	Tapered Bearing Cone	2	

All original equipment manufacturers names and part numbers are used for identification purposes only, and we are in no way implying that our products are original equipment parts. Prices subject to change without notice.



# Replaces Jacobsen Greens King IV Parts

*Cutting Unit  
Rear Rollers*



Item No	R&R Part No.	OEM Part No.	Description	Qty Req	Order Quantity
59	<b>R337593</b>	3000983, 337593	Seal	2	
60	<b>R3001762</b>	30001762, 3001762	Sleeve - Wear Hardened	2	
61	<b>R3000698</b>	3000698	Washer	2	
62	<b>R445718</b>	445718, 445801	Locknut - 5/8-18 All Metal	2	
63	<b>R3001654</b>	3001654	Shaft - Roller	1	
64	<b>R500534</b>	500534, R500534	Bearing - with Cup	2	
65	<b>R3010422</b>	3010422	Shaft- Roller	1	
66	<b>R3010712</b>	3010712	Bearing - Ball - Single Seal	2	

All original equipment manufacturers names and part numbers are used for identification purposes only, and we are in no way implying that our products are original equipment parts. Prices subject to change without notice.