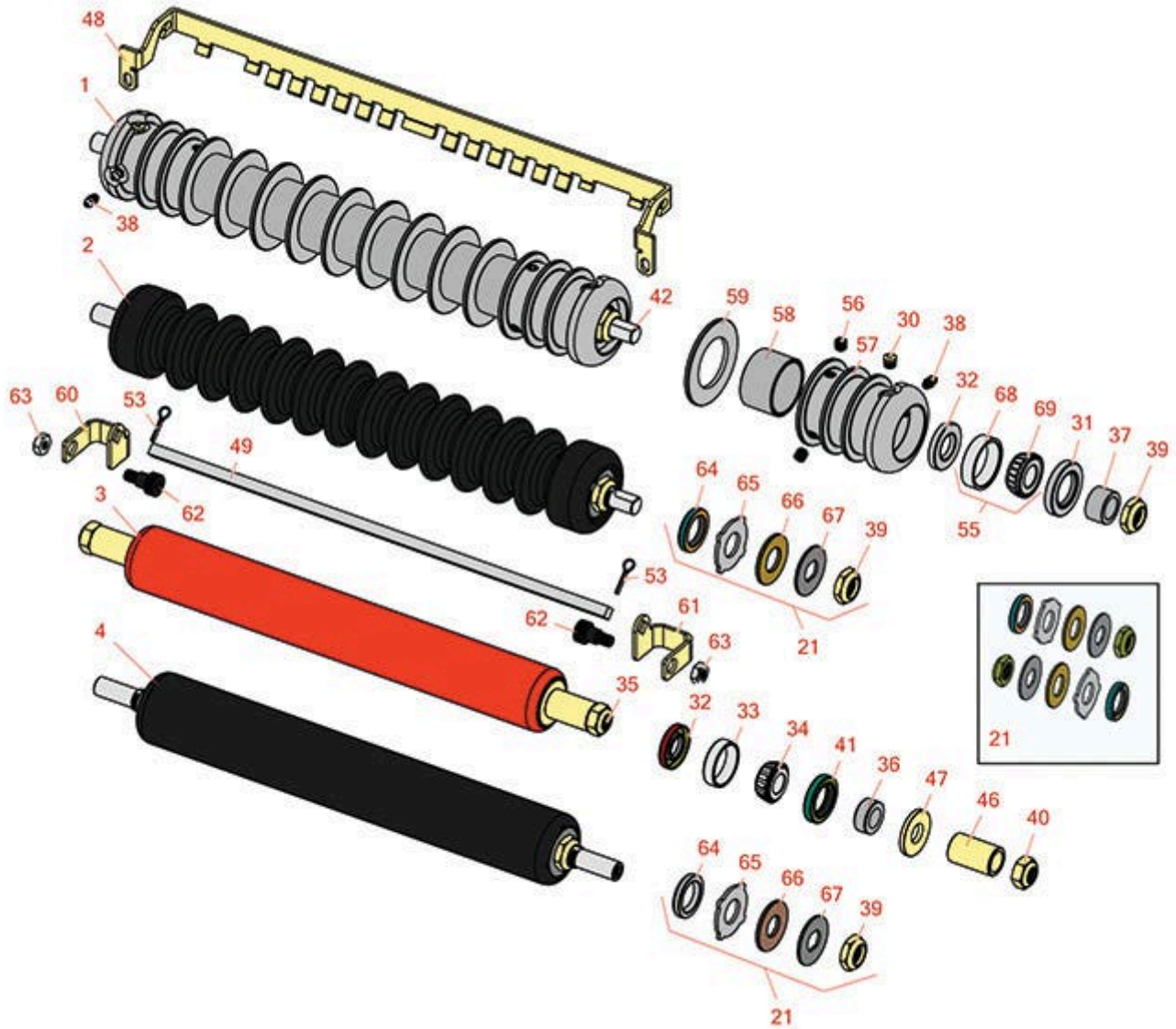




Replaces Jacobsen LF-1880 Parts

Cutting Unit
Rollers



All original equipment manufacturers names and part numbers are used for identification purposes only, and we are in no way implying that our products are original equipment parts. Prices subject to change without notice.



Replaces Jacobsen LF-1880 Parts

Cutting Unit
Rollers



| Item No | R&R Part No. | OEM Part No. | Description | Qty Req | Order Quantity |
|---------|--------------|--------------|-------------|---------|----------------|
|---------|--------------|--------------|-------------|---------|----------------|

R&R Front Rollers

| | | | | | |
|---|----------------|--|-----------------------------------|---|--|
| 1 | R101373 | | Roller - Grooved Repairable Steel | 0 | |
|---|----------------|--|-----------------------------------|---|--|

Tech Note: Constructed with a through shaft and greasable ball bearings, this roller can be repaired by unscrewing the ends and replacing the series of washers and spacers.:

| | | | | | |
|---|-----------------|--|------------------------------------|---|--|
| 2 | R1013770 | | Roller - Grooved UHMW Polyethylene | 0 | |
|---|-----------------|--|------------------------------------|---|--|

Tech Note: Machined from solid UHMW, this low maintenance roller rotates around a 1" solid stainless steel shaft and requires no bearings or grease. Patented groove design and smooth UHMW material prevents build-up of debris.:

R&R Rear Rollers

| | | | | | |
|---|-----------------|--|-------------------------------|---|--|
| 3 | R4115860 | | Roller - Smooth Tubular Steel | 0 | |
|---|-----------------|--|-------------------------------|---|--|

Tech Note: Constructed with a through shaft, this heavy duty roller uses greasable tapered bearings for extended life.:

| | | | | | |
|---|----------------|--|-----------------------------------|---|--|
| 4 | R101396 | | Roller - Smooth UHMW Polyethylene | 0 | |
|---|----------------|--|-----------------------------------|---|--|

Tech Note: Machined from solid UHMW, this low maintenance roller uses a 1" solid stainless steel shaft and requires no grease. UHMW material prevents build-up of debris.:

Overhaul Kits

| | | | | | |
|----|----------------|--|---------------------------------|---|--|
| 21 | R101399 | | Overhaul Kit - UHMW 2 Pc Roller | 1 | |
|----|----------------|--|---------------------------------|---|--|

Tech Note: Fits all R&R 2-1/2" - 3-1/2" Dia. Black UHMW Plastic Rollers that do not use ball bearings.. Includes 2 ea.: R1503230 Star Washers, R1503470 Seals, R150333 Thrust Washers, R3296-15 Locknuts, R1503471 Bronze Thrust Washers:

Other Parts Available

| | | | | | |
|----|----------------|------------------------------|---------------------------|---|--|
| 30 | R170714 | 170714, 471240, 471242 | Fitting - Pressure Relief | 2 | |
|----|----------------|------------------------------|---------------------------|---|--|

| | | | | | |
|----|-----------------|---------------------|-------------------------|---|--|
| 31 | R253-117 | 253-117, 3004882 | Seal - Outer Triple Lip | 2 | |
|----|-----------------|---------------------|-------------------------|---|--|

| | | | | | |
|----|-----------------|---------|---------------------|---|--|
| 32 | R253-152 | 3001656 | Seal - Inner Roller | 2 | |
|----|-----------------|---------|---------------------|---|--|

| | | | | | |
|----|----------------|--------|---------------------|---|--|
| 32 | R338647 | 338647 | Seal - Inner Roller | 2 | |
|----|----------------|--------|---------------------|---|--|

All original equipment manufacturers names and part numbers are used for identification purposes only, and we are in no way implying that our products are original equipment parts. Prices subject to change without notice.



Replaces Jacobsen LF-1880 Parts

Cutting Unit
Rollers



| Item No | R&R Part No. | OEM Part No. | Description | Qty Req | Order Quantity |
|--|-----------------|--|----------------------------|---------|----------------|
| <i>Tech Note: Fits O.E.M. 2811028 Roller Only:</i> | | | | | |
| 33 | R254-67 | 307108, 5000625, 500625 | Cup - Bearing | 2 | |
| 34 | R254-68 | 307109, 5000625, 500625 | Tapered Bearing Cone | 2 | |
| 35 | R2811039 | 2811039 | Shaft - Rear Roller | 1 | |
| 36 | R3001762 | 30001762, 3001762 | Sleeve - Wear Hardened | 2 | |
| 37 | R3005156 | 3005156 | Sleeve - Wear Hardened | 2 | |
| <i>Tech Note: Fits O.E.M. 2811028 Roller Only:</i> | | | | | |
| 37 | R5-4038 | 5-4038 | Sleeve - Wear Reel Shaft | 2 | |
| <i>Tech Note: Fits R101373 Roller Only:</i> | | | | | |
| 38 | R302-5 | 302-5, 471214, 471223, 471226 | Fitting - Grease | 2 | |
| 39 | R3296-15 | 3296-15, 367029, 444742 | Locknut - 3/4-16 Nylon Jam | 2 | |
| 40 | R3296-33 | 444820, 445718, 445801 | Locknut - 5/8-18 ESNA Jam | 2 | |
| 41 | R337593 | 3000983, 337593 | Seal | 2 | |
| 42 | R2811030 | 2811030 | Shaft | 1 | |
| 46 | R4115523 | 4115523 | Spacer - Rear Roller | 2 | |
| 47 | R4115557 | 4115557 | Washer | 2 | |
| 48 | R4116934 | 4116934 | Scraper - Grooved Roller | 1 | |

All original equipment manufacturers names and part numbers are used for identification purposes only, and we are in no way implying that our products are original equipment parts. Prices subject to change without notice.



Replaces Jacobsen LF-1880 Parts

Cutting Unit
Rollers



| Item No | R&R Part No. | OEM Part No. | Description | Qty Req | Order Quantity |
|---|-----------------|------------------------------|----------------------------------|---------|----------------|
| <i>Tech Note: Fits O.E.M.2811028 Roller Only:</i> | | | | | |
| 48 | R101376 | | Scraper - Fits R101373 Roller | 1 | |
| <i>Tech Note: Fits R101373 Roller Only:</i> | | | | | |
| 49 | R4118379 | 4118379 | Scraper - Rod | 1 | |
| 53 | R460026 | 460026 | Pin - Cotter 1/8 x 3/4 | 2 | |
| 55 | R500534 | 500534, R500534 | Bearing - with Cup | 2 | |
| 56 | R150691 | | Screw - Set Nyloc 3/8-16 x 3/8 | 4 | |
| 57 | R100103 | | Roller End - Grooved | 2 | |
| 58 | R150676 | 150676 | Spacer - 2-3/4 Dia x 1-1/4 L | 0 | |
| 59 | R150673 | 150673 | Washer - 3 Repairable Roller | 11 | |
| 60 | R4121861 | 4121861 | Bracket - LH Rear Roller Scraper | 1 | |
| 61 | R4121862 | 4121862 | Bracket - RH Rear Roller Scraper | 1 | |
| 62 | R365246 | 365246 | Bolt - Shoulder w/Nyloc Patch | 2 | |
| 63 | R443110 | 306562, 443110, 444762 | Nut - 3/8-16 Hex | 2 | |
| 64 | R1503470 | | Seal - Inner Wiper | 2 | |
| 65 | R1503230 | | Washer - Thrust Outer Keyed | 2 | |
| 66 | R1503471 | | Washer - Thrust SAE660 Bronze | 2 | |
| 67 | R150333 | | Washer - Flat Keyed Outer SS | 2 | |
| 68 | R254-79 | 254-79, 4121175 | Cup - Bearing | 2 | |

Tech Note: Use R254-79M installation mandrel to properly install race.:

All original equipment manufacturers names and part numbers are used for identification purposes only, and we are in no way implying that our products are original equipment parts. Prices subject to change without notice.



Replaces Jacobsen LF-1880 Parts

*Cutting Unit
Rollers*



| Item No | R&R Part No. | OEM Part No. | Description | Qty Req | Order Quantity |
|---------|----------------|---|----------------------|---------|----------------|
| 69 | R254-78 | 254-78, 385174, 4121174, 4135152 | Tapered Bearing Cone | 2 | |

All original equipment manufacturers names and part numbers are used for identification purposes only, and we are in no way implying that our products are original equipment parts. Prices subject to change without notice.