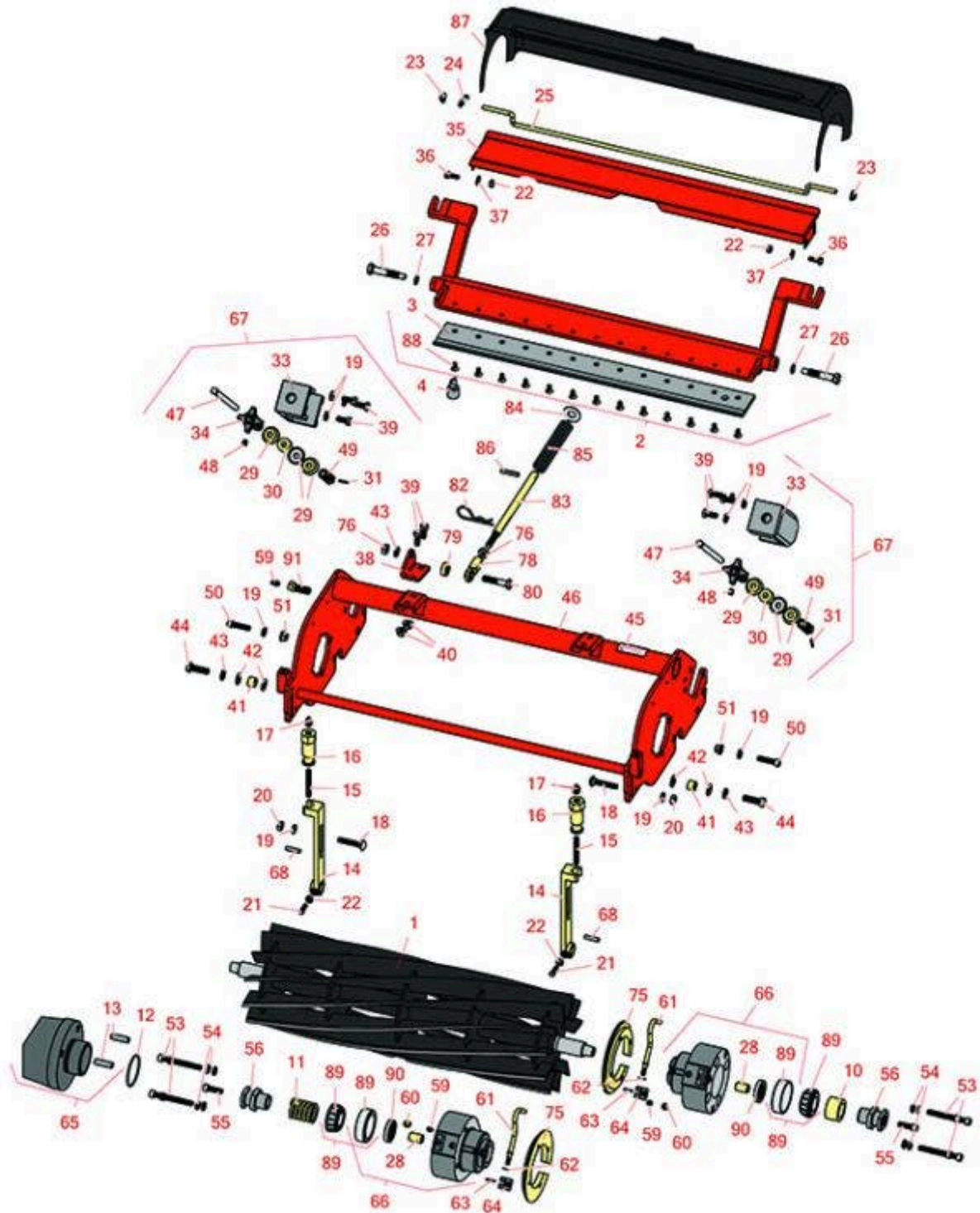




# Replaces Jacobsen LF-4677 Parts

7" Reel Cutting Unit  
Reel & Bedknife



All original equipment manufacturers names and part numbers are used for identification purposes only, and we are in no way implying that our products are original equipment parts. Prices subject to change without notice.



# Replaces Jacobsen LF-4677 Parts

7" Reel Cutting Unit

Reel & Bedknife



Item No	R&R Part No.	OEM Part No.	Description	Qty Req	Order Quantity
---------	--------------	--------------	-------------	---------	----------------

## R&R Reels, Lifetime Guaranteed

1	<b>R101329</b>		Reel - 7 Blade	1	
---	----------------	--	----------------	---	--

*Detail Description:* R&R Reel blades are manufactured from high carbon-boron alloy steel and then hardened to RC46-49 to match the temper of our bedknives and original equipment bedknives. All R&R Reels are cylindrically ground on bearing surfaces and then relief ground. Reels are then precision computer balanced for extended bearing and reel life. R&R Products Reels are guaranteed against defects in material and workmanship for the life of the reel under normal use.:

1	<b>R5002476</b>	5002476	Reel - 9 Blade	1	
---	-----------------	---------	----------------	---	--

*Detail Description:* R&R Reel blades are expertly crafted from premium high carbon-boron alloy steel, heat-treated to perfectly complement both R&R and OEM bedknives. Each reel undergoes precision cylindrical grinding on bearing surfaces, followed by relief grinding for optimal performance. Advanced computer balancing ensures extended reel and bearing life. Backed by our lifetime guarantee against defects in materials and craftsmanship under normal use, R&R Reels deliver unmatched durability and cutting precision you can trust.:

1	<b>R2810471</b>	2810471	Reel - 9 Blade	1	
---	-----------------	---------	----------------	---	--

*Detail Description:* R&R Reel blades are expertly crafted from premium high carbon-boron alloy steel, heat-treated to perfectly complement both R&R and OEM bedknives. Each reel undergoes precision cylindrical grinding on bearing surfaces, followed by relief grinding for optimal performance. Advanced computer balancing ensures extended reel and bearing life. Backed by our lifetime guarantee against defects in materials and craftsmanship under normal use, R&R Reels deliver unmatched durability and cutting precision you can trust.:

1	<b>R5002762</b>	2810472, 5002762	Reel - 11 Blade	1	
---	-----------------	---------------------	-----------------	---	--

*Detail Description:* R&R Reel blades are expertly crafted from premium high carbon-boron alloy steel, heat-treated to perfectly complement both R&R and OEM bedknives. Each reel undergoes precision cylindrical grinding on bearing surfaces, followed by relief grinding for optimal performance. Advanced computer balancing ensures extended reel and bearing life. Backed by our lifetime guarantee against defects in materials and craftsmanship under normal use, R&R Reels deliver unmatched durability and cutting precision you can trust.:

## R&R Bedknives, Lifetime Guaranteed

2	<b>R1002556</b>	1002556	Bedknife/Bedbar Assy	1	
---	-----------------	---------	----------------------	---	--

*Tech Note:* w/ R503257 Bedknife:

All original equipment manufacturers names and part numbers are used for identification purposes only, and we are in no way implying that our products are original equipment parts. Prices subject to change without notice.



## Replaces Jacobsen LF-4677 Parts

7" Reel Cutting Unit

Reel & Bedknife



Item R&R

No Part No.

OEM

Part No.

Description

Qty  
Req

Order  
Quantity

*Detail Description: R&R Bedknives are manufactured from high carbon-boron alloy steel and then hardened to RC46-49 to match the temper of our reel blades and original equipment reels. Bedknives are surface ground on the top and front edge and straightened three times before being packaged with oil for rust prevention. All R&R Bedknives now have an increased front edge grind for added life. All R&R Bedknives are guaranteed against defects in material and workmanship under normal use for the life of the part.:*

Item No	R&R Part No.	OEM Part No.	Description	Qty Req	Order Quantity
2	<b>R1003934</b>	1003934	Bedknife/Bedbar Assy	1	

*Tech Note: W/ R5003150 Bedknife:*

*Detail Description: R&R Bedknives are manufactured from high carbon-boron alloy steel and then hardened to RC46-49 to match the temper of our reel blades and original equipment reels. Bedknives are surface ground on the top and front edge and straightened three times before being packaged with oil for rust prevention. All R&R Bedknives now have an increased front edge grind for added life. All R&R Bedknives are guaranteed against defects in material and workmanship under normal use for the life of the part.:*

3	<b>R5003150</b>	5003150	Bedknife - Low Cut	1	
---	-----------------	---------	--------------------	---	--

*Detail Description: R&R Bedknives are manufactured from high carbon-boron alloy steel and then hardened to RC46-49 to match the temper of our reel blades and original equipment reels. Bedknives are surface ground on the top and front edge and straightened three times before being packaged with oil for rust prevention. All R&R Bedknives now have an increased front edge grind for added life. All R&R Bedknives are guaranteed against defects in material and workmanship under normal use for the life of the part.:*

3	<b>R503460</b>	503257, 503460	Bedknife - 22 in 13 Hole	1	
---	----------------	-------------------	--------------------------	---	--

*Detail Description: R&R Bedknives are manufactured from high carbon-boron alloy steel and then hardened to RC46-49 to match the temper of our reel blades and original equipment reels. Bedknives are surface ground on the top and front edge and straightened three times before being packaged with oil for rust prevention. All R&R Bedknives now have an increased front edge grind for added life. All R&R Bedknives are guaranteed against defects in material and workmanship under normal use for the life of the part.:*

### R&R Razor Tool Steel Bedknives, Lifetime Guaranteed

3	<b>R101523</b>		Bedknife - Razor Tool Steel - 22 High Cut	1	
---	----------------	--	---	---	--

All original equipment manufacturers names and part numbers are used for identification purposes only, and we are in no way implying that our products are original equipment parts. Prices subject to change without notice.



# Replaces Jacobsen LF-4677 Parts

7" Reel Cutting Unit

Reel & Bedknife



Item No	R&R Part No.	OEM Part No.	Description	Qty Req	Order Quantity
---------	--------------	--------------	-------------	---------	----------------

*Detail Description: R&R Razor bedknives are manufactured from premium alloy tool steel steel and then hardened to RC48-51 to match the temper of our Razor reel blades and original equipment premium series reels. Bedknives are surface ground on the top and front edge and specially packaged for rust prevention. All R&R Bedknives now have an increased front edge grind for added life. All R&R Bedknives are guaranteed against defects in material and workmanship under normal use for the life of the part. You can expect up to double the life over standard bedknives.:*

## Service Tools

4	<b>R101272T</b>		Bedknife Screw Driver Tool	0
---	-----------------	--	----------------------------	---

*Tech Note: Easily install and remove bed knife screws with the help of a ratchet. Tool manufactured with hardened alloy steel.:*

*Detail Description: Easily install and remove bed knife screws with the help of a ratchet. Tool manufactured with hardened alloy steel.:*

## Other Parts Available

10	<b>R3004800</b>	3004800	Spacer - Hardened Reel	1
11	<b>R3004734</b>	3004734	Spring - Compression	1
12	<b>R3006021</b>	3006021	O-Ring	1
13	<b>R3006022</b>	3006022	Pin - Hardened Counter Balance	2
14	<b>R3004738</b>	3004738	Adjuster - Front Roller	2
15	<b>R343616</b>	343616, 443102	Stud	2
16	<b>R365009</b>	3005692, 365009, 365170, 441674	Knob - Adjusting Roller	2
17	<b>R471219</b>	366852, 471219	Zerk - Grease	2
18	<b>R441674</b>	441674	Screw - 5/16-18 x 1-3/4 Carriage	2
19	<b>R446136</b>	446134, 446136	Washer - Lock 5/16 Zinc	2

All original equipment manufacturers names and part numbers are used for identification purposes only, and we are in no way implying that our products are original equipment parts. Prices subject to change without notice.



## Replaces Jacobsen LF-4677 Parts

7" Reel Cutting Unit

Reel & Bedknife



Item No	R&R Part No.	OEM Part No.	Description	Qty Req	Order Quantity
20	<b>R443106</b>	443106	Nut - 5/16-18 Y/Zinc Plated	2	
21	<b>R352737</b>	352737	Screw - Set 1/4 x 7/8 Sq Head	2	
22	<b>R443102</b>	443102	Nut - 1/4-20 Yellow Zinc	4	
23	<b>R445525</b>	445525	Nut - 1/4 Pal	2	
24	<b>R3009281</b>	3009281	Spring - Torsion 22 Roller	1	
24	<b>R3005267</b>	3005267	Spring - Torsion 24 Roller	1	
25	<b>R3009280</b>	3009280	Scraper - 22 Rear Roller (Rod)	1	
26	<b>R347169</b>	347169, 365501	Stud - Backing RH 2-5/16	2	
27	<b>R454017</b>	454017	Shim - Bed Bar Bolt	2	
28	<b>R545940</b>	2500759, 545940	Bushing	2	
29	<b>R3009892</b>	3009075, 3009892	Spacer - Cup	6	
30	<b>R3010470</b>	3008946, 3010470	Spring - Urethane	2	
31	<b>R460026</b>	460026	Pin - Cotter 1/8 x 3/4	2	
33	<b>R3004795</b>	3004795	Housing - Bed Knife Adj	1	
34	<b>R2000125</b>	2000125, 2000215	Knob, Bedknife Adj.	2	
35	<b>R3006248</b>	3006248	Deflector	1	
36	<b>R321-4</b>	321-4, 400108	Bolt - Hex HD 1/4-20 x 3/4	2	
37	<b>R453023</b>	453023	Washer - Flat 1/4	2	
38	<b>R3008601</b>	3008601	Bracket - Spring Holddown	1	

All original equipment manufacturers names and part numbers are used for identification purposes only, and we are in no way implying that our products are original equipment parts. Prices subject to change without notice.



## Replaces Jacobsen LF-4677 Parts

7" Reel Cutting Unit

Reel & Bedknife



Item No	R&R Part No.	OEM Part No.	Description	Qty Req	Order Quantity
39	<b>R400184</b>	400184, 400194	Screw - 5/16-18 x 3/4 Hex	2	
40	<b>R445722</b>	445722	Nut - Serrated Washer	2	
41	<b>R3006290</b>	3006290	Spacer - Hardened	2	
42	<b>R453011</b>	453011	Washer - Flat 3/8 SAE Y/Zinc	4	
43	<b>R3254-6</b>	3254-6, 446140, 446142	Washer - Lock 3/8	2	
44	<b>R400264</b>	400264	Bolt - Hex HD 3/8-16 x 1-1/4	2	
45	<b>R354083</b>	354083, 361877, 4127335	Decal - Danger	2	
46	<b>R5002609</b>	5002609	Frame	1	
47	<b>R3010472</b>	3004798, 3010472	Rod - Bedknife Adj	2	
48	<b>R422511</b>	422511	Screw - Set w/Nylon Plug	2	
49	<b>R3010471</b>	3004799, 3009894, 3010471	Bolt - Special	2	
50	<b>R434036</b>	434036	Screw - Soc HD 5/16-18 x 1-1/4	1	
51	<b>R445795</b>	445795	Nut - 5/16-18 Flanged	2	
53	<b>R434049</b>	434049	Bolt - Soc HD Cap 5/16-18 x 2	8	
54	<b>R362643</b>	362643	Spacer - Brg Housing	8	
55	<b>R434004</b>	434003, 434004	Screw - Soc HD 5/16-18 x 1	2	
56	<b>R4166860</b>	3004737, 3010046, 4166860	Coupler	2	

All original equipment manufacturers names and part numbers are used for identification purposes only, and we are in no way implying that our products are original equipment parts. Prices subject to change without notice.



## Replaces Jacobsen LF-4677 Parts

7" Reel Cutting Unit

Reel & Bedknife



Item No	R&R Part No.	OEM Part No.	Description	Qty Req	Order Quantity
59	R302-5	302-5, 471214, 471223, 471226	Fitting - Grease	2	
60	R170714	170714, 471240, 471242	Fitting - Pressure Relief	2	
61	R3006028	3006028	Rod	2	
62	R455066	455066	Washer - M6 Flat	2	
63	R012419	461357, 461359	Pin - Roll 1/8 x 3/4	2	
64	R4130092	4130092	Block - Clamp	2	
65	R2000135	2000135	Casting - Weight - Counter Balance	1	
66	R1002811	1002811	Bearing Housing Assy	2	
67	R1002532	1002532	Adjusting Assy - Bedknife	2	
68	R461256	461256	Pin - 1/4 x 1	2	
75	R3005210	3005210	Ring - Retaining	1	
76	R443110	306562, 443110, 444762	Nut - 3/8-16 Hex	1	
78	R366974	366974	Bearing - Rod End	1	
79	R352435	352435	Spacer	1	
80	R400266	400266	Bolt - Hex HD 3/8-16 x 1-1/2	1	
80	R400268	400268	Bolt - Hex HD 3/8-16 x 1-3/4	1	
82	R460312	460312	Pin - Hair Cotter	1	
83	R3008593	3008593	Shaft - Down Pressure	1	

All original equipment manufacturers names and part numbers are used for identification purposes only, and we are in no way implying that our products are original equipment parts. Prices subject to change without notice.



## Replaces Jacobsen LF-4677 Parts

7" Reel Cutting Unit

Reel & Bedknife



Item No	R&R Part No.	OEM Part No.	Description	Qty Req	Order Quantity
84	<b>R453017</b>	452012, 453017	Washer - Flat 1/2	1	
85	<b>R311870</b>	311870	Spring - Compression	1	
86	<b>R461397</b>	461397	Pin - Roll 1/4 x 1-1/4	1	
87	<b>R3005209</b>	3005209	Shield - Grass	1	
88	<b>R101272</b>	101272, 3009138, 402578, 800813	Screw - Bedknife 1/4-20 x 1/2	13	
89	<b>R5002477</b>	5002477	Bearing - w/Cup	2	
90	<b>R3006030</b>	3006030	Seal	2	
91	<b>R163568</b>	163568	Bolt - Grease	2	

All original equipment manufacturers names and part numbers are used for identification purposes only, and we are in no way implying that our products are original equipment parts. Prices subject to change without notice.