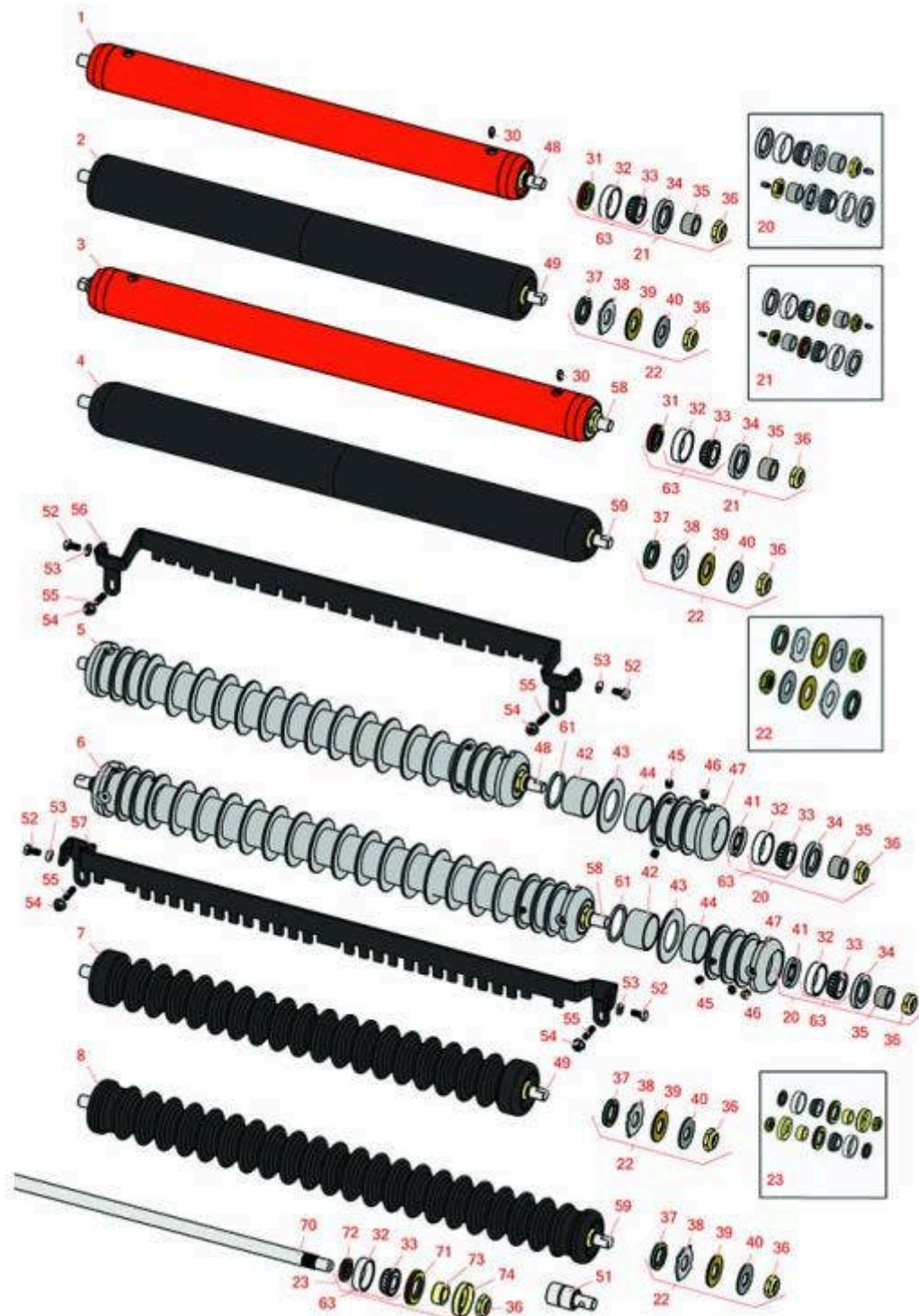




# Replaces Jacobsen Tri-King 1684D Parts

26" & 30" Hydraulic Cutting Unit  
Rollers



All original equipment manufacturers names and part numbers are used for identification purposes only, and we are in no way implying that our products are original equipment parts. Prices subject to change without notice.



# Replaces Jacobsen Tri-King 1684D Parts

26" & 30" Hydraulic Cutting Unit  
Rollers



Item No	R&R Part No.	OEM Part No.	Description	Qty Req	Order Quantity
---------	--------------	--------------	-------------	---------	----------------

## R&R Rollers

1	<b>R104125</b>	116940, 131863, 132639	Roller - Smooth Tubular Steel	0	
---	----------------	------------------------------	-------------------------------	---	--

*Tech Note: Fits 26" Unit. Constructed with a through shaft, this heavy duty roller uses greasable tapered bearings for extended life.:*

2	<b>R1013630</b>		Roller - Smooth UHMW Polyethylene	0	
---	-----------------	--	-----------------------------------	---	--

*Tech Note: Fits 26" Unit. Machined from solid UHMW, this low maintenance roller uses a 1" solid stainless steel shaft and requires no grease. UHMW material prevents build-up of debris.:*

3	<b>R104130</b>	116933, 132640	Roller - Smooth Tubular Steel	0	
---	----------------	-------------------	-------------------------------	---	--

*Tech Note: Fits 30" Unit. Constructed with a through shaft, this heavy duty roller uses greasable tapered bearings for extended life.:*

4	<b>R1013650</b>		Roller - Smooth UHMW Polyethylene 30	0	
---	-----------------	--	---	---	--

*Tech Note: Fits 30" Unit. Machined from solid UHMW, this low maintenance roller rotates around a 1" solid stainless steel shaft and requires no bearings or grease. Patented groove design and smooth UHMW material prevents build-up of debris.:*

5	<b>R104100</b>	116906, 123266	Roller - Grooved Repairable Steel - 26	0	
---	----------------	-------------------	---	---	--

*Tech Note: Fits 26" Unit. Constructed with a through shaft and greasable ball bearings, this roller can be repaired by unscrewing the ends and replacing the series of washers and spacers.:*

6	<b>R104115</b>	123265, 67729	Roller - Grooved Repairable Steel - 30	0	
---	----------------	------------------	---	---	--

*Tech Note: Fits 30" Unit. Constructed with a through shaft and greasable ball bearings, this roller can be repaired by unscrewing the ends and replacing the series of washers and spacers.:*

7	<b>R1013620</b>	123266	Roller - Grooved UHMW Polyethylene	0	
---	-----------------	--------	---------------------------------------	---	--

*Tech Note: Fits 26" Unit. Machined from solid UHMW, this low maintenance roller rotates around a 1" solid stainless steel shaft and requires no bearings or grease. Patented groove design and smooth UHMW material prevents build-up of debris.:*

All original equipment manufacturers names and part numbers are used for identification purposes only, and we are in no way implying that our products are original equipment parts. Prices subject to change without notice.



# Replaces Jacobsen Tri-King 1684D Parts

26" & 30" Hydraulic Cutting Unit  
Rollers



Item No	R&R Part No.	OEM Part No.	Description	Qty Req	Order Quantity
8	<b>R1013640</b>	123265	Roller - Grooved UHMW Polyethylene - 30	0	

*Tech Note: Fits 30" Unit. Machined from solid UHMW, this low maintenance roller rotates around a 1" solid stainless steel shaft and requires no bearings or grease. Patented groove design and smooth UHMW material prevents build-up of debris.:*

## Overhaul Kits

20	<b>R100137</b>		Overhaul Kit - Roller	0	
----	----------------	--	-----------------------	---	--

*Tech Note: Includes 2 ea.: R3296-15 Locknuts, R302-5 Grease Fittings, R253-122 Seals, R253-117 Seals, R5-4038 Wear Sleeves, R254-78 Bearings & R254-79 Bearing Cups:*

21	<b>R100138</b>		Overhaul Kit - Roller	0	
----	----------------	--	-----------------------	---	--

*Tech Note: Includes 2 ea.: R3296-15 Locknuts, R253-152 Seals, R253-117 Seals, R5-4038 Wear Sleeves, R254-78 Bearings, R254-79 Bearing Cups, & R302-5 Grease Fittings:*

22	<b>R101399</b>		Overhaul Kit - UHMW 2 Pc Roller	1	
----	----------------	--	---------------------------------	---	--

*Tech Note: Fits all R&R 2-1/2" - 3-1/2" Dia. Black UHMW Plastic Rollers that do not use ball bearings.. Includes 2 ea.: R1503230 Star Washers, R1503470 Seals, R150333 Thrust Washers, R3296-15 Locknuts, R1503471 Bronze Thrust Washers:*

23	<b>R100133</b>		Overhaul Kit - Roller	1	
----	----------------	--	-----------------------	---	--

*Tech Note: Includes: 2ea: R254-78 Bearings, R254-79 Bearing Cups, R3296-15 Locknuts, R338645 Cup Deflectors, R338646 Seals, R338647 Seals, & R366168 Wear Sleeves:*

## Other Parts Available

30	<b>R302-5</b>	302-5, 471214, 471223, 471226	Fitting - Grease	2	
----	---------------	--	------------------	---	--

31	<b>R253-152</b>	3001656	Seal - Inner Roller	2	
----	-----------------	---------	---------------------	---	--

32	<b>R254-79</b>	254-79, 4121175	Cup - Bearing	2	
----	----------------	--------------------	---------------	---	--

*Tech Note: Use R254-79M installation mandrel to properly install race.:*

All original equipment manufacturers names and part numbers are used for identification purposes only, and we are in no way implying that our products are original equipment parts. Prices subject to change without notice.



# Replaces Jacobsen Tri-King 1684D Parts

26" & 30" Hydraulic Cutting Unit  
Rollers



Item No	R&R Part No.	OEM Part No.	Description	Qty Req	Order Quantity
33	<b>R254-78</b>	254-78, 385174, 4121174, 4135152	Tapered Bearing Cone	2	
34	<b>R253-117</b>	253-117, 3004882	Seal - Outer Triple Lip	2	
35	<b>R5-4038</b>	5-4038	Sleeve - Wear Reel Shaft	2	
36	<b>R3296-15</b>	3296-15, 367029, 444742	Locknut - 3/4-16 Nylon Jam	2	
37	<b>R1503470</b>		Seal - Inner Wiper	2	
38	<b>R1503230</b>		Washer - Thrust Outer Keyed	2	
39	<b>R1503471</b>		Washer - Thrust SAE660 Bronze	2	
40	<b>R150333</b>		Washer - Flat Keyed Outer SS	2	
41	<b>R253-122</b>		Seal	2	
42	<b>R150676</b>	150676	Spacer - 2-3/4 Dia x 1-1/4 L	0	
43	<b>R150673</b>	150673	Washer - 3 Repairable Roller	0	
44	<b>R150678</b>		Spacer - Grooved Roller 3/4	2	
45	<b>R150691</b>		Screw - Set Nyloc 3/8-16 x 3/8	4	
46	<b>R170714</b>	170714, 471240, 471242	Fitting - Pressure Relief	2	
47	<b>R100103</b>		Roller End - Grooved	2	
48	<b>R104102</b>		Shaft - 26 Roller	1	
49	<b>R1013810</b>		Shaft - 1 SS Roller	1	
51	<b>R75-1290</b>	75-1290	Bearing - Roller	2	

All original equipment manufacturers names and part numbers are used for identification purposes only, and we are in no way implying that our products are original equipment parts. Prices subject to change without notice.



# Replaces Jacobsen Tri-King 1684D Parts

26" & 30" Hydraulic Cutting Unit  
Rollers



Item No	R&R Part No.	OEM Part No.	Description	Qty Req	Order Quantity
52	<b>R400182</b>	400182	Bolt - Hex HD 5/16-18 x 5/8	2	
53	<b>R446136</b>	446134, 446136	Washer - Lock 5/16 Zinc	2	
54	<b>R445781</b>	445781	Nut - 5/16-18 Whiz	2	
55	<b>R415559</b>	415559	Screw - Set 5/16-18 x 1	2	
56	<b>R3001706</b>	3001706	Scraper - 26 Grooved Roller	1	
56	<b>R700508</b>		Scraper - 26 Grooved Roller	1	
57	<b>R3003811</b>	3003811	Scraper - 30 Grooved Roller	1	
57	<b>R700509</b>		Scraper - 30 Grooved Roller	1	
58	<b>R104117</b>		Shaft - 30 Roller	1	
59	<b>R1013820</b>		Shaft - 1 SS Roller 2 Pc	1	
61	<b>R150676A</b>		Spacer - 1/8	4	
63	<b>R500534</b>	500534, R500534	Bearing - with Cup	2	

## **Replaces Jacobsen 30" 132640 Solid Roller & 1000384 Grooved Roller Parts**

70	<b>R366587</b>	366587	Shaft - Solid 30 Roller	1	
70	<b>R104109</b>		Shaft - 30 Solid Roller	1	
70	<b>R366588</b>	366588	Shaft - 26 Roller	1	
70	<b>R104108</b>		Shaft - 26 Solid Roller	1	
71	<b>R338646</b>	338646	Seal - Outer Roller	2	
72	<b>R338647</b>	338647	Seal - Inner Roller	2	
73	<b>R366168</b>	336168, 366168	Sleeve - Wear Hardened	2	

All original equipment manufacturers names and part numbers are used for identification purposes only, and we are in no way implying that our products are original equipment parts. Prices subject to change without notice.



# Replaces Jacobsen Tri-King 1684D Parts

26" & 30" Hydraulic Cutting Unit  
Rollers



Item No	R&R Part No.	OEM Part No.	Description	Qty Req	Order Quantity
74	<b>R338645</b>	338645	Deflector - Cup	2	

All original equipment manufacturers names and part numbers are used for identification purposes only, and we are in no way implying that our products are original equipment parts. Prices subject to change without notice.