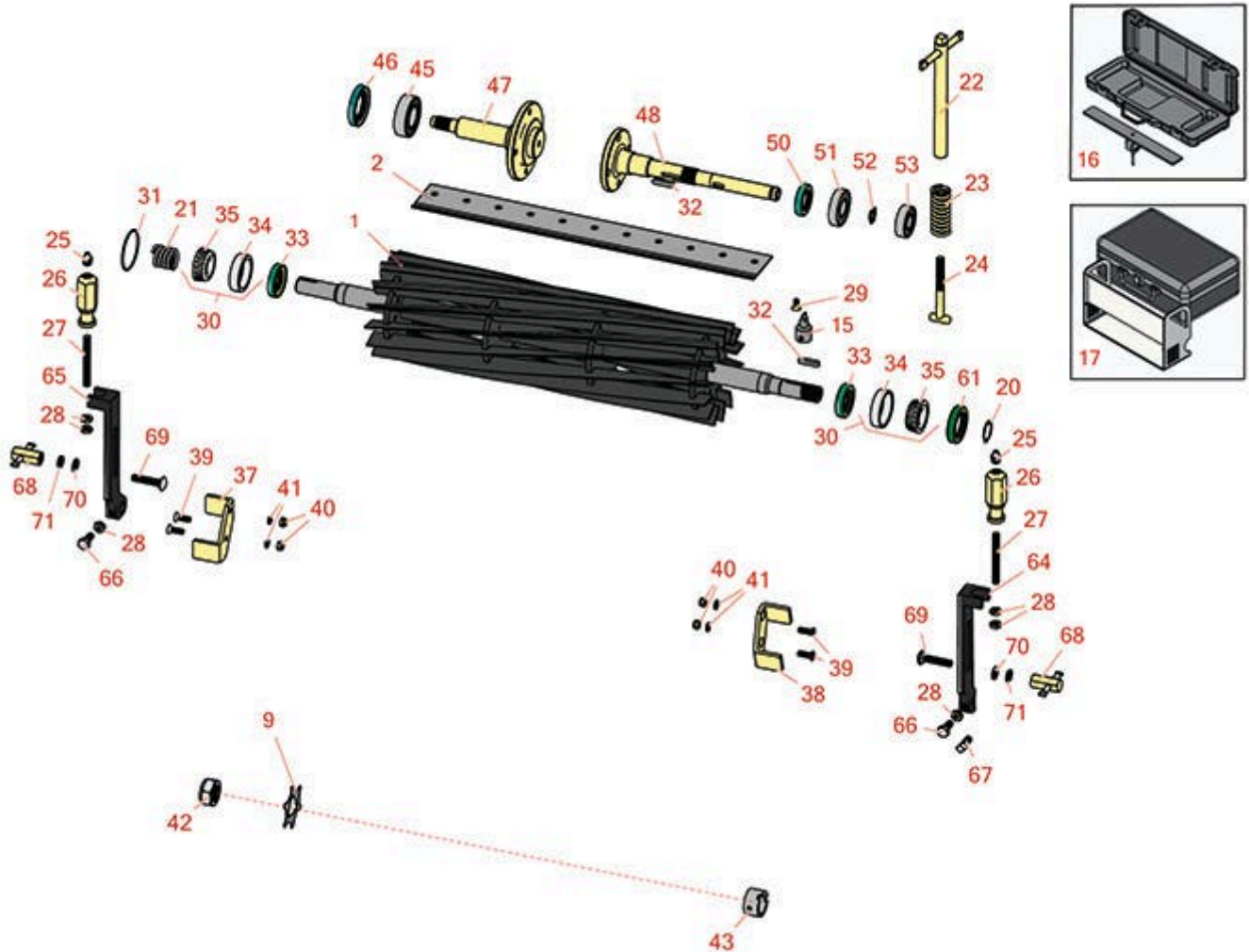




# Replaces John Deere 180A Walk-Behind Greens Mower Parts

Cutting Unit  
Reel & Bedknife



All original equipment manufacturers names and part numbers are used for identification purposes only, and we are in no way implying that our products are original equipment parts. Prices subject to change without notice.



# Replaces John Deere 180A Walk-Behind Greens Mower Parts

Cutting Unit  
Reel & Bedknife



Item No	R&R Part No.	OEM Part No.	Description	Qty Req	Order Quantity
---------	--------------	--------------	-------------	---------	----------------

## R&R Reels, Lifetime Guaranteed

1	<b>RAMT2866</b>	AMT2279, AMT2866	Reel - 11 Blade	1	
1	<b>R130230</b>		Reel - 14 Blade	1	

## R&R Bedknives, Lifetime Guaranteed

2	<b>RMT4846</b>	MT4846, MT4906, UC18877	Bedknife - Tournament	1	
2	<b>RMT6944</b>	MT6944, MT7350, UC19156	Bedknife - Low Cut Min HOC .079	1	

## Blades

9	<b>RET14707</b>	ET14707	Verti-Cut Blade - .025 x 2.375	75	
9	<b>RET14707C</b>		Verti-Cut Blade - .025 x 2.375 Carbide Tipped	75	

## Service Tools

15	<b>R101278T</b>		Bedknife Screw Driver Tool	1	
<i>Tech Note: Easily install and remove bed knife screws with the help of a ratchet. Tool manufactured with hardened alloy steel.:</i>					
16	<b>R184</b>		Masters Gauge - Digital - Inches/Metric	1	
16	<b>R175</b>		Masters Gauge - Inches	1	
17	<b>RP508</b>		Height of Cut Prism Gauge	1	

## Other Parts Available

20	<b>R40M7080</b>	40M7080, ET11059	Ring - Snap	1	
21	<b>RET11053</b>	ET11053	Spring - Reel	1	

All original equipment manufacturers names and part numbers are used for identification purposes only, and we are in no way implying that our products are original equipment parts. Prices subject to change without notice.



# Replaces John Deere 180A Walk-Behind Greens Mower Parts

Cutting Unit  
Reel & Bedknife



Item No	R&R Part No.	OEM Part No.	Description	Qty Req	Order Quantity
22	<b>RET11068</b>	ET11068	Handle - Adjusting RH	1	
22	<b>RET11069</b>	ET11069	Handle - Adjusting LH	1	
23	<b>RET11070</b>	ET11070	Spring - Bed Bar	2	
24	<b>RET11372</b>	ET11372	Bolt - Adjusting Bed Bar	2	
25	<b>R471219</b>	471219, JD7759, JD7798	Zerk - Grease	2	
26	<b>RMT1087</b>	MT1087	Knob - Adjusting Roller	2	
27	<b>RMT1088</b>	MT1088	Stud - Roller Adj.	2	
28	<b>R14M7151</b>	14M7151	Nut - Jam Roller Adj	6	
29	<b>R101278</b>	21M7194	Screw - Bedknife	13	
30	<b>R500610</b>	AMT1108	Tapered Bearing Set - Cup and Cone	2	
<i>Tech Note: Includes:RAMT1108 &amp; RMT2108:</i>					
31	<b>RM44162</b>	M44162	O-Ring - Reel	1	
32	<b>R49M7049</b>	49M7049	Key - 5mm x 22mm	1	
33	<b>RMT1160</b>	MT1160	Seal - Reel	2	
34	<b>RMT2108</b>	MT2108	Tapered Bearing Cup	2	
35	<b>RAMT1108</b>	AMT1108	Tapered Bearing Cone	2	
37	<b>RET11112</b>	ET11112	Bracket - RH	1	
38	<b>RET11113</b>	ET11113	Bracket - LH	1	
39	<b>R21M7326</b>	21M7326	Screw - M6 x 20mm	4	
40	<b>RE68605</b>	E68605	Locknut - 6mm	4	
41	<b>R24M7139</b>	24M7139	Washer - Flat 6mm	4	

All original equipment manufacturers names and part numbers are used for identification purposes only, and we are in no way implying that our products are original equipment parts. Prices subject to change without notice.



# Replaces John Deere 180A Walk-Behind Greens Mower Parts

*Cutting Unit  
Reel & Bedknife*



Item No	R&R Part No.	OEM Part No.	Description	Qty Req	Order Quantity
42	<b>RN198341</b>	N198341	Nut - Nyloc 7/8-14	1	
43	<b>RET14917</b>	ET14917	Spacer	1	
45	<b>R345050</b>	AZ20217, AZX20217	Bearing	2	
46	<b>RET10285</b>	ET10285	Seal	2	
47	<b>RET11081</b>	ET11081	Spindle - Traction Roller	1	
48	<b>RET11075</b>	ET11075	Shaft - Rear Traction Roller	2	
50	<b>RET11095</b>	ET11095	Seal	2	
51	<b>RA203604</b>	ET11094	Bearing	2	
52	<b>R40M1863</b>	40M1863	Ring - Snap	2	
53	<b>RA203603</b>	JD8535	Bearing	2	
61	<b>RET11073</b>	ET11073	Seal - Reel Outer	1	
64	<b>RMT5244</b>	MT5244	Bracket - Roller LH	1	
65	<b>RMT5245</b>	MT5245	Bracket - Roller RH	1	
66	<b>R19M7881</b>	19M7881	Bolt - Hex HD M8-1.25 x 20	2	
67	<b>RA50744</b>	A50744	Screw - 8mm-1.25 x 25 Sq HD	2	
68	<b>RET11356</b>	ET11356	Nut - Adjusting	2	
69	<b>R03M7186</b>	03M7186	Bolt - Carriage 8-1.25 x 30mm	2	
70	<b>R24M7036</b>	24M7036	Washer - Flat 8mm Zinc	2	
71	<b>R12M7065</b>	12M7065	Washer - Lock 8mm Zinc	2	

All original equipment manufacturers names and part numbers are used for identification purposes only, and we are in no way implying that our products are original equipment parts. Prices subject to change without notice.