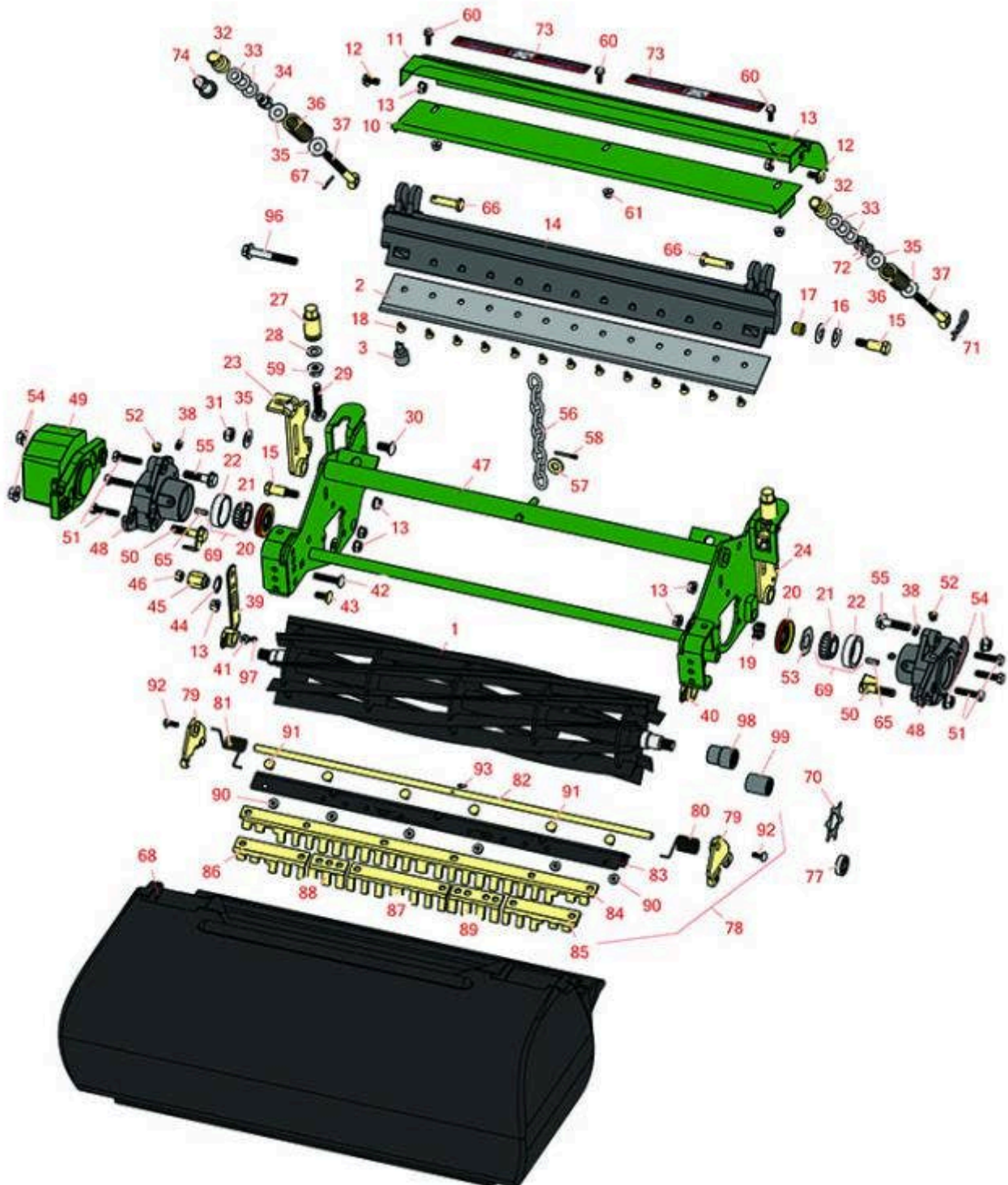




# Replaces John Deere 2500A Riding Greens Mower Parts

Cutting Unit - Serial up to 030000  
Reel & Bedknife



All original equipment manufacturers names and part numbers are used for identification purposes only, and we are in no way implying that our products are original equipment parts. Prices subject to change without notice.



# Replaces John Deere 2500A Riding Greens Mower Parts

Cutting Unit - Serial up to 030000  
Reel & Bedknife



Item No	R&R Part No.	OEM Part No.	Description	Qty Req	Order Quantity
---------	--------------	--------------	-------------	---------	----------------

## *R&R Reels, Lifetime Guaranteed*

1	<b>R101274</b>	AMT2885, AMT538	Reel - 11 Blade - External Spline	1	
1	<b>RAET10826</b>	AET10826, AET11347	Reel - 9 Blade - External Spline	1	
1	<b>RAET11237</b>	AET11237, AMT2883	Reel - 7 Blade Heavy Duty - External Spline	1	

## *R&R Bedknives, Lifetime Guaranteed*

2	<b>RET17767</b>	ET17767, UC23562	Bedknife - High Cut 5/16	1	
2	<b>RET17532</b>	ET11066, ET17532	Bedknife - Fairway .189 Min	1	
2	<b>RET17533</b>	ET14402, ET17533, ET17767, MT4869, MT7351, UC18873	Bedknife - 22in Standard- .126 Min. HOC	1	
2	<b>RET17534</b>	ET17534	Bedknife - 22in Tounament- .098 Min HOC	1	
2	<b>RMT7351</b>	ET17489, MT7351, UC19154, UC28163	Bedknife - 22in Lo-Cut .079 Min. HOC	1	

## *R&R Razor Tool Steel Bedknives, Lifetime Guaranteed*

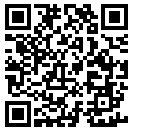
2	<b>R130130</b>		Bedknife - Razor Tool Steel - 22 High Cut	1	
2	<b>R130116</b>	MT4846, UC18877	Bedknife - Razor Tool Steel - 22 Tournament Cut	1	
2	<b>R130115</b>		Bedknife - Razor Tool Steel - 22 Micro Cut	1	

All original equipment manufacturers names and part numbers are used for identification purposes only, and we are in no way implying that our products are original equipment parts. Prices subject to change without notice.



# Replaces John Deere 2500A Riding Greens Mower Parts

Cutting Unit - Serial up to 030000  
Reel & Bedknife



Item No	R&R Part No.	OEM Part No.	Description	Qty Req	Order Quantity
---------	--------------	--------------	-------------	---------	----------------

## Service Tools

3	<b>R101278T</b>		Bedknife Screw Driver Tool	0	
---	-----------------	--	----------------------------	---	--

*Tech Note: Easily install and remove bed knife screws with the help of a ratchet. Tool manufactured with hardened alloy steel.:*

## Other Parts Available

10	<b>RMT2127</b>	MT2127	Shield - Grass	1	
11	<b>RAMT2495</b>	AMT2495, AMT554	Shield - Grass	1	
12	<b>R19M7865</b>	19M7865	Bolt - Hex Washer M8 x 16	2	
13	<b>R14M7298</b>	14M7298	Nut - 8mm x 1.25 Flanged	10	
14	<b>RMT2694</b>	MT2694	Bed Bar	1	
15	<b>RMT3016</b>	MT3016	Bolt - Bed Bar	2	
16	<b>RN168012</b>	N168012	Washer - Spring	4	
17	<b>RB30499</b>	B30499	Bushing - Bed Bar	2	
18	<b>R101278</b>	21M7194	Screw - Bedknife	13	
19	<b>RET14592</b>	ET14592	Spring - Reel Bearing	1	
20	<b>RET14566</b>	ET14566	Seal - Reel	2	
21	<b>R254-78</b>	JD8188	Tapered Bearing Cone	2	
22	<b>R254-79</b>	JD8226	Cup - Bearing	2	
<i>Tech Note: Use R254-79M installation mandrel to properly install race.:</i>					
23	<b>RAMT5112</b>	AMT5112	Bracket - Roller RH Rear	1	
24	<b>RAMT5113</b>	AMT5113	Bracket - Roller LH Rear	1	
27	<b>RMT6483</b>	MT6483	Nut - Adjusting Rear Roller	2	

All original equipment manufacturers names and part numbers are used for identification purposes only, and we are in no way implying that our products are original equipment parts. Prices subject to change without notice.



# Replaces John Deere 2500A Riding Greens Mower Parts

Cutting Unit - Serial up to 030000  
Reel & Bedknife



Item No	R&R Part No.	OEM Part No.	Description	Qty Req	Order Quantity
28	<b>R453011</b>	24M7096	Washer - Flat 3/8 SAE Y/Zinc	2	
29	<b>R19M7383</b>	19M7383	Bolt - Rear Roller Adj 55 mm Long	2	
29	<b>R19M7385</b>	19M7385	Bolt - Rear Roller Adj 70mm Long	2	
30	<b>R03M7307</b>	03M7307	Bolt - Carriage M10	2	
31	<b>R14M7517</b>	14M7517	Locknut - 10mm x 1.5 ESNA	2	
32	<b>RMT4991</b>	MT4991	Nut - Adjusting Bedknife	2	
33	<b>RET16679</b>	ET16679	Washer - Spring	6	
34	<b>RMT6486</b>	MT6486	Nut - Bed Bar Adjusting	2	
35	<b>R24H1307</b>	24H1307	Washer - Flat 13/32 x 1 x 1/16	4	
36	<b>RET11070</b>	ET11070	Spring - Bed Bar	2	
37	<b>RMT3074</b>	MT3074	Eyebolt - Bed Bar	2	
38	<b>R302-5</b>	JD7797, JD7842, JD7844	Fitting - Grease	2	
39	<b>RMT3015</b>	MT3015	Bracket - RH - Extended	1	
<i>Tech Note: Use with 7 &amp; 9 Blade Reel:</i>					
40	<b>RMT3072</b>	MT3072	Bracket - LH - Extended	1	
<i>Tech Note: Use with 7 &amp; 9 Blade Reel:</i>					
39	<b>RMT7259</b>	MT7259	Bracket - RH	1	
<i>Tech Note: Use with 11 Blade Reel:</i>					
40	<b>RMT7260</b>	MT7260	Bracket - LH	1	
<i>Tech Note: Use with 11 Blade Reel:</i>					
41	<b>R3219-1</b>	14H860	Nut - 1/4-28	2	

All original equipment manufacturers names and part numbers are used for identification purposes only, and we are in no way implying that our products are original equipment parts. Prices subject to change without notice.



# Replaces John Deere 2500A Riding Greens Mower Parts

Cutting Unit - Serial up to 030000  
Reel & Bedknife



Item No	R&R Part No.	OEM Part No.	Description	Qty Req	Order Quantity
42	<b>R03M7188</b>	03M7188	Bolt - Carriage M8 x 40	1	
43	<b>R03M7184</b>	03M7184	Bolt - Carriage M8	3	
44	<b>R12M7052</b>	12M7052	Washer - Rib Lock	1	
45	<b>RMT3881</b>	MT3881	Nut - Eccentric Front Roller Bkt	1	
46	<b>R14M7166</b>	14M7166	Locknut - 8mm x 1.25 ESNA	1	
47	<b>R130121</b>	AMT1415	Frame - Cutting Unit	1	
48	<b>RMT7294</b>	MT2647, MT7294	Housing - Reel	2	
49	<b>RMT6476</b>	MT6476	Counterweight	1	
50	<b>RAMT2261</b>	AMT2261	Kit - Bolt w/Clip	2	
51	<b>R19M8008</b>	19M8008	Bolt - Hex HD M8-1.25 x 35	6	
52	<b>R170714</b>	E14814	Fitting - Pressure Relief	2	
53	<b>RET16704</b>	ET16704	Retainer	1	
54	<b>RH135891</b>	H135891	Locknut - 10mm x 1.5 Flanged 10.9	4	
<i>Tech Note: High Strength:</i>					
55	<b>R19M7804</b>	19M7804	Bolt - Flanged Hex M10-1.5 x 40	2	
56	<b>RAMT1479</b>	AMT1479	Chain - Link	1	
57	<b>R24H1682</b>	24H1682	Washer - 13/32 x 7/8 x 1/8	1	
58	<b>R460028</b>	11M7059, 460028	Pin - Cotter 1/8 x 1	1	
59	<b>R14M7296</b>	14M7296	Nut - 10mm x 1.5 Flanged	2	
60	<b>R19M7775</b>	19M7775	Bolt - Flanged Hex M6-1.0 x 16	3	

All original equipment manufacturers names and part numbers are used for identification purposes only, and we are in no way implying that our products are original equipment parts. Prices subject to change without notice.



# Replaces John Deere 2500A Riding Greens Mower Parts

Cutting Unit - Serial up to 030000  
Reel & Bedknife



Item No	R&R Part No.	OEM Part No.	Description	Qty Req	Order Quantity
61	<b>R14M7397</b>	14M7397, 14M7463	Locknut - 6mm x 1.0 ESNA Flanged	3	
65	<b>RR30587</b>	30587, R30587	Pin - Dowell 1/4 Dia. x .75	4	
66	<b>R45M7060</b>	45M7060	Pin	2	
67	<b>R11M7012</b>	11M7012	Pin - Cotter 1/8 x 5/8	2	
68	<b>RMT6671</b>	MT6671	Grass Basket	1	
69	<b>R500534</b>		Bearing - with Cup	0	
70	<b>RET14707</b>	ET14707	Verti-Cut Blade - .025 x 2.375	0	
70	<b>RET14707C</b>		Verti-Cut Blade - .025 x 2.375 Carbide Tipped	0	
71	<b>R130122</b>		Clip - Hitch Pin	2	
72	<b>R130123</b>	130123	Nut - Hex 10mm x 1.0	4	
73	<b>RMT6517</b>	MT6517	Label - Warning	2	
74	<b>RMT6990</b>	MT6990	Nut - Adjusting	2	
77	<b>RET16026</b>	ET16026	Bearing	2	
78	<b>R500559</b>	BM18680, MT18680	Scraper Kit - Grooved Roller	1	
<i>Tech Note: Fits John Deere AET11262 &amp; AMT2966 Grooved Roller Only:</i>					
79	<b>RMT2407</b>	MT2407	Bracket - Roller Scraper	2	
80	<b>RET17629</b>	ET17629	Spring - Torsion LH	1	
81	<b>RET17630</b>	ET17630	Spring - Torsion RH	1	
82	<b>RET17757</b>	ET11757, ET17757	Pin - Scraper	1	

All original equipment manufacturers names and part numbers are used for identification purposes only, and we are in no way implying that our products are original equipment parts. Prices subject to change without notice.



# Replaces John Deere 2500A Riding Greens Mower Parts

Cutting Unit - Serial up to 030000  
Reel & Bedknife



Item No	R&R Part No.	OEM Part No.	Description	Qty Req	Order Quantity
83	<b>R500571</b>	MT2369	Bar - Scraper	1	
84	<b>R500558</b>		Scraper - Grooved Roller	1	
<i>Tech Note: 1 Piece Scraper fits OEM AET11262 &amp; AMT2966 Grooved Roller:</i>					
85	<b>RMT5159</b>	MT5159	Scraper - Fits J.D. LH End	1	
86	<b>RMT5158</b>	MT5158	Scraper - Fits J.D. RH End	1	
87	<b>RMT2340</b>	MT2340	Scraper - Fits J.D. Center	1	
88	<b>RMT2342</b>	MT2342	Section - Grooved Scraper 3 Tooth	1	
89	<b>RMT2341</b>	MT2341	Section - Grooved Scraper 4 Tooth	1	
90	<b>R14M7303</b>	14M7303	Nut - 6mm x 1.0 Flanged	6	
91	<b>R03M7191</b>	03M7191	Bolt - Carriage M10 x 25	6	
92	<b>R03M7221</b>	03M7221	Bolt - Carriage M6 x 16	2	
93	<b>R34M7010</b>	34M7010	Pin - Spring	1	
96	<b>R19M7809</b>	19M7809	Screw	2	
97	<b>R22H1004</b>	19H3003	Screw - Set 1/4-28 x 1/2	2	
98	<b>RMT7067</b>	MT7067	Coupling - Splined 9/11 Tooth	1	
99	<b>RTCA12581</b>	TCA12581	Coupling - Reel 11 Tooth	1	

All original equipment manufacturers names and part numbers are used for identification purposes only, and we are in no way implying that our products are original equipment parts. Prices subject to change without notice.