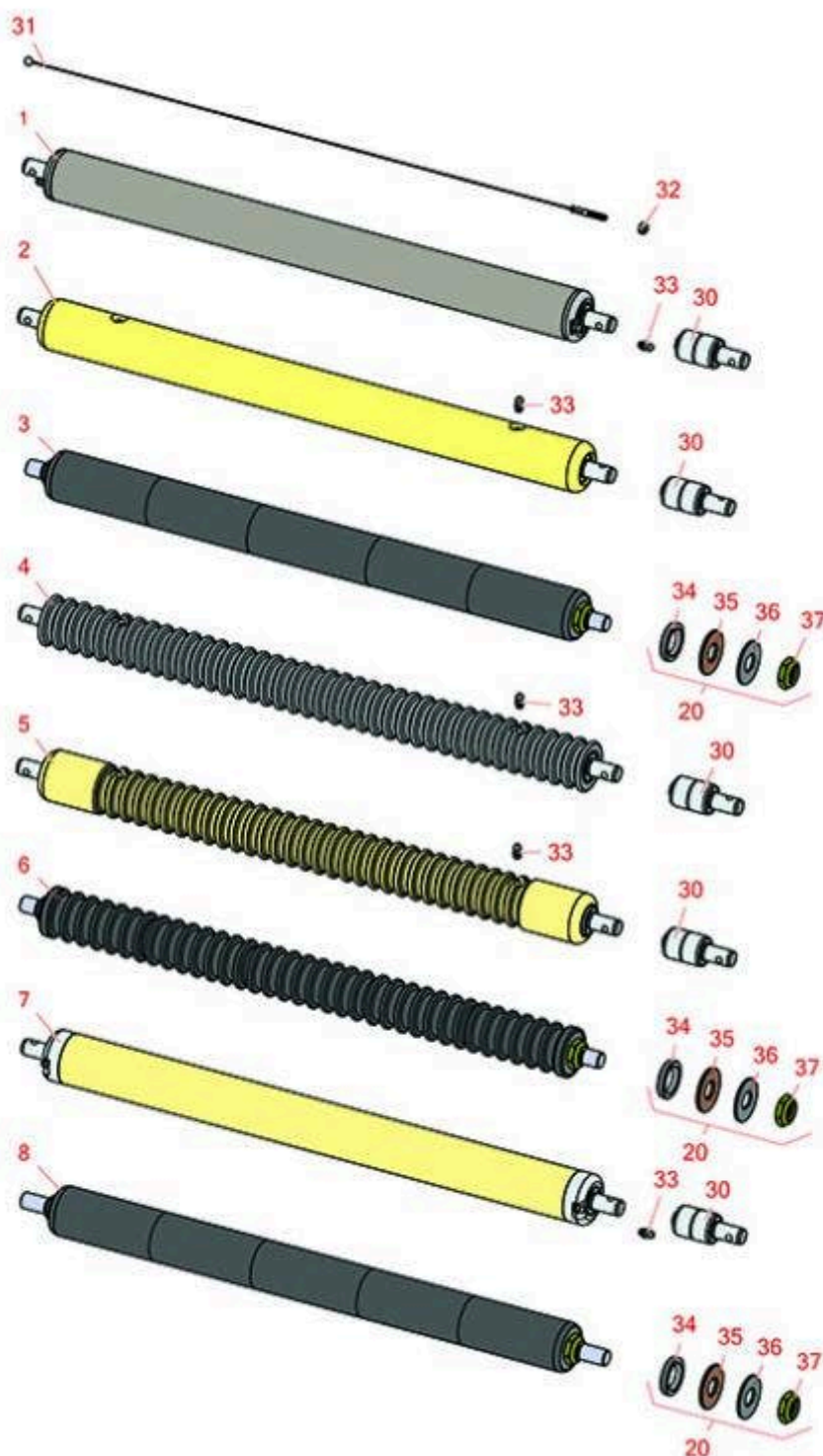




Replaces John Deere 2500E Riding Greens Mower Parts

Verti-Cut Unit - Serial up to 030000
Rollers



All original equipment manufacturers names and part numbers are used for identification purposes only, and we are in no way implying that our products are original equipment parts. Prices subject to change without notice.



Replaces John Deere 2500E Riding Greens Mower Parts

Verti-Cut Unit - Serial up to 030000
Rollers



Item No	R&R Part No.	OEM Part No.	Description	Qty Req	Order Quantity
---------	--------------	--------------	-------------	---------	----------------

R&R Front Rollers

1	RAET10111	AET10111, AMT2876	Roller - Smooth Tubular Steel	1	
---	------------------	----------------------	-------------------------------	---	--

Detail Description: This tubular steel roller uses greasable "water-pump" style bearings.:

1	RBM18480	BM18480	Roller Assy - Solid 2"	1	
---	-----------------	---------	------------------------	---	--

2	RAMT1442	AMT1442, AMT2878	Roller - Smooth Solid Steel	1	
---	-----------------	---------------------	-----------------------------	---	--

Detail Description: Machined from solid steel, this heavy weight roller uses greasable "water-pump" style bearings.:

3	R120255		Roller - Smooth UHMW Polyethylene	1	
---	----------------	--	-----------------------------------	---	--

Detail Description: Machined from solid UHMW, this low maintenance roller uses a 1" solid stainless steel shaft and requires no grease. UHMW material prevents build-up of debris.:

4	RAMT1061	AET10557, AMT1061, AMT2877	Roller - Grooved Machined Solid Steel	1	
---	-----------------	----------------------------------	---------------------------------------	---	--

Detail Description: Machined from solid steel, this heavy weight roller uses greasable "water-pump" style bearings.:

5	RAMT1443	AMT1443, AMT2879	Roller - Grooved Machined Solid Steel	1	
---	-----------------	---------------------	---------------------------------------	---	--

Detail Description: Machined from solid steel, this heavy weight roller uses greasable "water-pump" style bearings. Extended length body.:

6	R120250		Roller - Grooved UHMW Polyethylene	1	
---	----------------	--	------------------------------------	---	--

Detail Description: Machined from solid UHMW, this low maintenance roller rotates around a 1" solid stainless steel shaft and requires no bearings or grease. Patented groove design and smooth UHMW material prevents build-up of debris.:

R&R Rear Rollers

7	RAMT1060	AMT1060	Roller - Smooth Tubular Steel	1	
---	-----------------	---------	-------------------------------	---	--

All original equipment manufacturers names and part numbers are used for identification purposes only, and we are in no way implying that our products are original equipment parts. Prices subject to change without notice.



Replaces John Deere 2500E Riding Greens Mower Parts

Verti-Cut Unit - Serial up to 030000
Rollers



Item No	R&R Part No.	OEM Part No.	Description	Qty Req	Order Quantity
---------	--------------	--------------	-------------	---------	----------------

Detail Description: This tubular steel roller uses greasable "water-pump" style bearings.:

8	R120260		Roller - Smooth UHMW Polyethylene	1	
---	---------	--	-----------------------------------	---	--

Detail Description: Machined from solid UHMW, this low maintenance roller uses a 1" solid stainless steel shaft and requires no grease. UHMW material prevents build-up of debris.:

Overhaul Kits

20	R101395		Overhaul Kit - UHMW Roller	1	
----	---------	--	----------------------------	---	--

Detail Description: Fits all R&R 2" Dia. Black UHMW Polyethylene Rollers. Includes 10 ea.: R150322 Roll Pins; 2 ea.: R3296-15 Locknuts, R150347T Teflon Seals, R150333 Thrust Washers, & R150334A Bronze Thrust Washers:

Other Parts Available

30	RAA35741	AA35741, AET10129, TCA22836	Bearing	2	
----	----------	-----------------------------------	---------	---	--

Detail Description: 1/4" Side Hole:

31	RAET10139	AET10139	Cable - Roller Scraper	1	
----	-----------	----------	------------------------	---	--

32	RU45916	14M7298, U45916	Locknut - 10-24 ESNA	5	
----	---------	--------------------	----------------------	---	--

33	R302-5	JD7797, JD7842, JD7844	Fitting - Grease	2	
----	--------	------------------------------	------------------	---	--

34	R150347T		Seal - Nonstick Lip	2	
----	----------	--	---------------------	---	--

35	R150334A		Washer - Thrust SAE660 Bronze	2	
----	----------	--	-------------------------------	---	--

36	R150333		Washer - Flat Keyed Outer SS	2	
----	---------	--	------------------------------	---	--

37	R3296-15	N101345	Locknut - 3/4-16 Nylon Jam	2	
----	----------	---------	----------------------------	---	--

All original equipment manufacturers names and part numbers are used for identification purposes only, and we are in no way implying that our products are original equipment parts. Prices subject to change without notice.