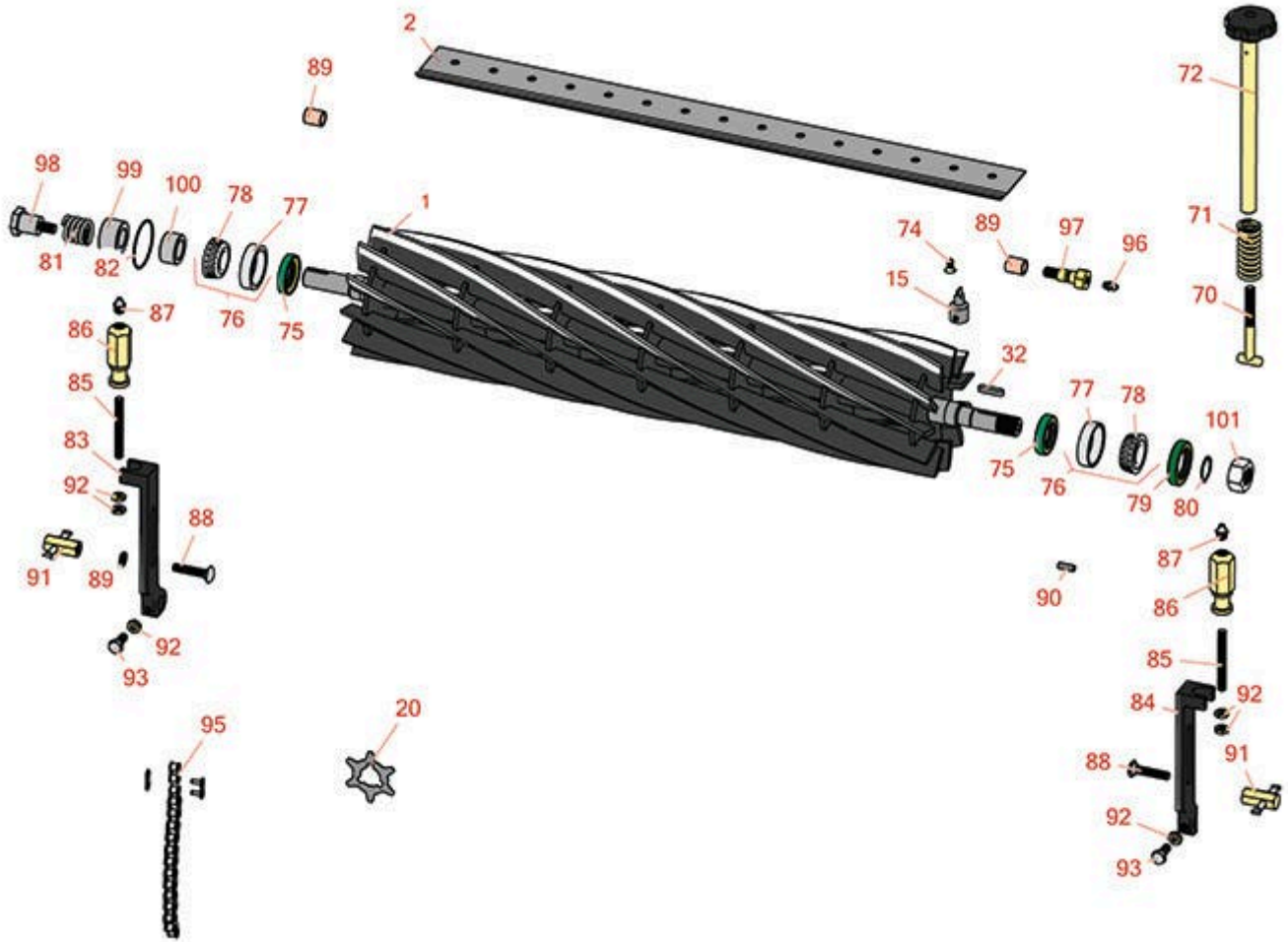




# Replaces John Deere 260B Walk-Behind Greens Mower Parts

Cutting Unit  
Reel & Bedknife



All original equipment manufacturers names and part numbers are used for identification purposes only, and we are in no way implying that our products are original equipment parts. Prices subject to change without notice.



# Replaces John Deere 260B Walk-Behind Greens Mower Parts

Cutting Unit  
Reel & Bedknife



Item No	R&R Part No.	OEM Part No.	Description	Qty Req	Order Quantity
<b>R&amp;R Reels, Lifetime Guaranteed</b>					
1	RAMT2903	AMT2903	Reel - 7 Blade 26in	1	
1	RET11055	AMT2867, AMT536, ET11055	Reel - 9 Blade 22in	11	
1	RAMT2898	AMT2716, AMT2898	Reel - 11 Blade 26in	1	
<b>R&amp;R Bedknives, Lifetime Guaranteed</b>					
2	RMT6947	MT6947	Bedknife - Standard Thin	1	
2	RMT6946	MT6946	Bedknife - High Cut	1	
<b>Service Tools</b>					
15	R101278T		Bedknife Screw Driver Tool	1	
<i>Tech Note: Easily install and remove bed knife screws with the help of a ratchet. Tool manufactured with hardened alloy steel.:</i>					
16	R184		Masters Gauge - Digital - Inches/Metric	1	
16	R175		Masters Gauge - Inches	1	
17	RP508		Height of Cut Prism Gauge	1	
<b>Blades</b>					
20	RET14707	ET14707	Verti-Cut Blade - .025 x 2.375	88	
20	RET14707C		Verti-Cut Blade - .025 x 2.375 Carbide Tipped	88	
<b>Other Parts Available</b>					
51	RN198341	N198341	Nut - Nyloc 7/8-14	1	
52	RET14917	ET14917	Spacer	1	

All original equipment manufacturers names and part numbers are used for identification purposes only, and we are in no way implying that our products are original equipment parts. Prices subject to change without notice.



# Replaces John Deere 260B Walk-Behind Greens Mower Parts

Cutting Unit  
Reel & Bedknife



Item No	R&R Part No.	OEM Part No.	Description	Qty Req	Order Quantity
53	<b>R12M7065</b>	12M7065	Washer - Lock 8mm Zinc	2	
70	<b>RET11372</b>	ET11372	Bolt - Adjusting Bed Bar	2	
71	<b>RET11070</b>	ET11070	Spring - Bed Bar	2	
72	<b>RAMT2798</b>	AMT2798	Handle - Adjuster	2	
74	<b>R101278</b>	21M7194	Screw - Bedknife	15	
75	<b>RMT1160</b>	MT1160	Seal - Reel	2	
76	<b>R500610</b>	AMT1108	Tapered Bearing Set - Cup and Cone	2	
<i>Tech Note: Includes:RAMT1108 &amp; RMT2108:</i>					
77	<b>RMT2108</b>	MT2108	Tapered Bearing Cup	2	
78	<b>RAMT1108</b>	AMT1108	Tapered Bearing Cone	2	
79	<b>RET11073</b>	ET11073	Seal - Reel Outer	1	
80	<b>R40M7080</b>	40M7080, ET11059	Ring - Snap	1	
81	<b>RET11053</b>	ET11053	Spring - Reel	2	
82	<b>RM44162</b>	M44162	O-Ring - Reel	1	
83	<b>RMT5245</b>	MT5245	Bracket - Roller RH	1	
84	<b>RMT5244</b>	MT5244	Bracket - Roller LH	1	
85	<b>RMT1088</b>	MT1088	Stud - Roller Adj.	2	
86	<b>RMT1087</b>	MT1087	Knob - Adjusting Roller	2	
87	<b>R471219</b>	471219, JD7759, JD7798	Zerk - Grease	2	
88	<b>R03M7186</b>	03M7186	Bolt - Carriage 8-1.25 x 30mm	2	

All original equipment manufacturers names and part numbers are used for identification purposes only, and we are in no way implying that our products are original equipment parts. Prices subject to change without notice.



# Replaces John Deere 260B Walk-Behind Greens Mower Parts

*Cutting Unit  
Reel & Bedknife*



Item No	R&R Part No.	OEM Part No.	Description	Qty Req	Order Quantity
89	<b>RP44946</b>	P44946	Bushing - Bronze	2	
90	<b>RR30587</b>	30587, R30587	Pin - Dowell 1/4 Dia. x .75	4	
91	<b>RET11356</b>	ET11356	Nut - Adjusting	2	
92	<b>R14M7151</b>	14M7151	Nut - Jam Roller Adj	2	
93	<b>R19M7881</b>	19M7881	Bolt - Hex HD M8-1.25 x 20	2	
94	<b>R49M7049</b>	49M7049	Key - 5mm x 22mm	1	
95	<b>RTCA16596</b>	TCA16596	Roller Chain #35	1	
96	<b>R302-5</b>	JD7797, JD7842, JD7844	Fitting - Grease	4	
97	<b>RET11371</b>	ET11371	Screw - Special	2	
98	<b>RET11367</b>	ET11367	Cap Screw - Special	1	
99	<b>RET11464</b>	ET11464	Spacer	1	
100	<b>RET11368</b>	ET11368	Spacer	1	
101	<b>R14M7306</b>	14M7306	Nut - M20-1.5	1	

All original equipment manufacturers names and part numbers are used for identification purposes only, and we are in no way implying that our products are original equipment parts. Prices subject to change without notice.