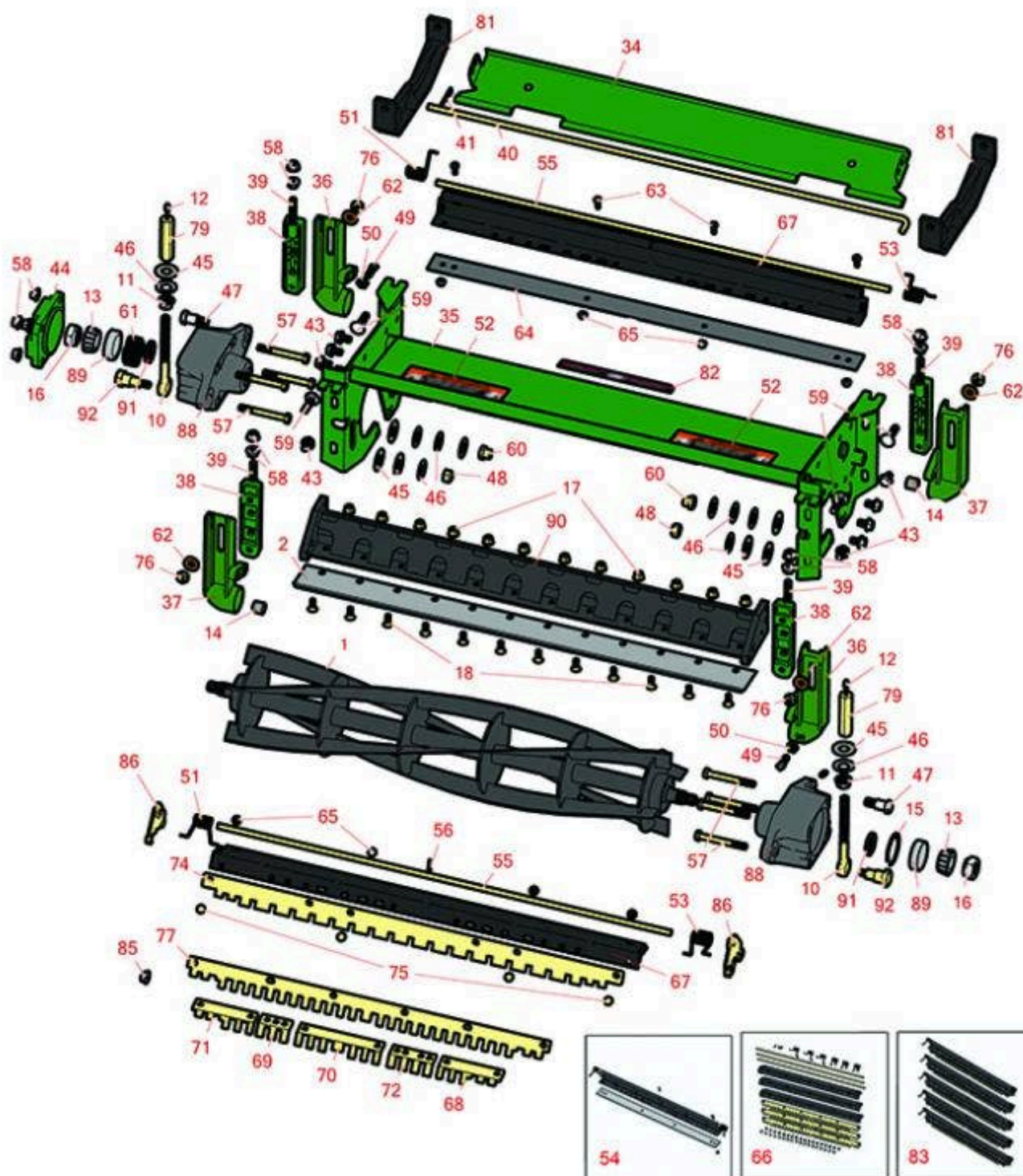




Replaces John Deere 2653B Reel Mower Parts

Cutting Unit - Serial up to 030000
Reel & Bedknife



All original equipment manufacturers names and part numbers are used for identification purposes only, and we are in no way implying that our products are original equipment parts. Prices subject to change without notice.



Replaces John Deere 2653B Reel Mower Parts

Cutting Unit - Serial up to 030000
Reel & Bedknife



Item No	R&R Part No.	OEM Part No.	Description	Qty Req	Order Quantity
---------	--------------	--------------	-------------	---------	----------------

R&R Reels, Lifetime Guaranteed

1	RAET11157	AET11157, AMT2868, AMT2870	Reel - 5 Blade	1	
---	------------------	----------------------------------	----------------	---	--

Tech Note: Fits 26" 2653:

Detail Description: R&R Reel blades are expertly crafted from premium high carbon-boron alloy steel, heat-treated to perfectly complement both R&R and OEM bedknives. Each reel undergoes precision cylindrical grinding on bearing surfaces, followed by relief grinding for optimal performance. Advanced computer balancing ensures extended reel and bearing life. Backed by our lifetime guarantee against defects in materials and craftsmanship under normal use, R&R Reels deliver unmatched durability and cutting precision you can trust.:

1	RAET11158	AET11158, AMT2869	Reel - 8 Blade	1	
---	------------------	----------------------	----------------	---	--

Tech Note: Fits 26" 2653:

Detail Description: R&R Reel blades are expertly crafted from premium high carbon-boron alloy steel, heat-treated to perfectly complement both R&R and OEM bedknives. Each reel undergoes precision cylindrical grinding on bearing surfaces, followed by relief grinding for optimal performance. Advanced computer balancing ensures extended reel and bearing life. Backed by our lifetime guarantee against defects in materials and craftsmanship under normal use, R&R Reels deliver unmatched durability and cutting precision you can trust.:

1	RAMT1015	AMT1015	Reel - 5 Blade	1	
---	-----------------	---------	----------------	---	--

Tech Note: Fits 26" 2653A & 2653B:

Detail Description: R&R Reel blades are expertly crafted from premium high carbon-boron alloy steel, heat-treated to perfectly complement both R&R and OEM bedknives. Each reel undergoes precision cylindrical grinding on bearing surfaces, followed by relief grinding for optimal performance. Advanced computer balancing ensures extended reel and bearing life. Backed by our lifetime guarantee against defects in materials and craftsmanship under normal use, R&R Reels deliver unmatched durability and cutting precision you can trust.:

1	RAMT1016	AMT1016, AMT2871	Reel - 8 Blade	1	
---	-----------------	---------------------	----------------	---	--

Tech Note: Fits 26" 2653A & 2653B:

All original equipment manufacturers names and part numbers are used for identification purposes only, and we are in no way implying that our products are original equipment parts. Prices subject to change without notice.



Replaces John Deere 2653B Reel Mower Parts

Cutting Unit - Serial up to 030000
Reel & Bedknife



Item No	R&R Part No.	OEM Part No.	Description	Qty Req	Order Quantity
---------	--------------	--------------	-------------	---------	----------------

Detail Description: R&R Reel blades are expertly crafted from premium high carbon-boron alloy steel, heat-treated to perfectly complement both R&R and OEM bedknives. Each reel undergoes precision cylindrical grinding on bearing surfaces, followed by relief grinding for optimal performance. Advanced computer balancing ensures extended reel and bearing life. Backed by our lifetime guarantee against defects in materials and craftsmanship under normal use, R&R Reels deliver unmatched durability and cutting precision you can trust.:

1	RAMT1052	AMT1052	Reel - 5 Blade	1	
---	-----------------	---------	----------------	---	--

Tech Note: Fits 30" 2653A & 2653B:

Detail Description: R&R Reel blades are expertly crafted from premium high carbon-boron alloy steel, heat-treated to perfectly complement both R&R and OEM bedknives. Each reel undergoes precision cylindrical grinding on bearing surfaces, followed by relief grinding for optimal performance. Advanced computer balancing ensures extended reel and bearing life. Backed by our lifetime guarantee against defects in materials and craftsmanship under normal use, R&R Reels deliver unmatched durability and cutting precision you can trust.:

1	RAMT1053	AMT1053, AMT2890	Reel - 8 Blade	1	
---	-----------------	---------------------	----------------	---	--

Tech Note: Fits 30" 2653A & 2653B:

Detail Description: R&R Reel blades are expertly crafted from premium high carbon-boron alloy steel, heat-treated to perfectly complement both R&R and OEM bedknives. Each reel undergoes precision cylindrical grinding on bearing surfaces, followed by relief grinding for optimal performance. Advanced computer balancing ensures extended reel and bearing life. Backed by our lifetime guarantee against defects in materials and craftsmanship under normal use, R&R Reels deliver unmatched durability and cutting precision you can trust.:

R&R Bedknives, Lifetime Guaranteed

2	RET17752	ET17752	Bedknife - 26 in 10 Hole	1	
---	-----------------	---------	--------------------------	---	--

Detail Description: R&R Bedknives are manufactured from high carbon-boron alloy steel and then hardened to RC46-49 to match the temper of our reel blades and original equipment reels. Bedknives are surface ground on the top and front edge and straightened three times before being packaged with oil for rust prevention. All R&R Bedknives now have an increased front edge grind for added life. All R&R Bedknives are guaranteed against defects in material and workmanship under normal use for the life of the part.:

2	RMT2396	MT2396, MT6949	Bedknife - 26 in Low Cut 10 Hole	1	
---	----------------	-------------------	----------------------------------	---	--

All original equipment manufacturers names and part numbers are used for identification purposes only, and we are in no way implying that our products are original equipment parts. Prices subject to change without notice.



Replaces John Deere 2653B Reel Mower Parts

Cutting Unit - Serial up to 030000
Reel & Bedknife



Item No	R&R Part No.	OEM Part No.	Description	Qty Req	Order Quantity
---------	--------------	--------------	-------------	---------	----------------

Detail Description: R&R Bedknives are manufactured from high carbon-boron alloy steel and then hardened to RC46-49 to match the temper of our reel blades and original equipment reels. Bedknives are surface ground on the top and front edge and straightened three times before being packaged with oil for rust prevention. All R&R Bedknives now have an increased front edge grind for added life. All R&R Bedknives are guaranteed against defects in material and workmanship under normal use for the life of the part.:

2	RMT1973	MT1973	Bedknife - 30 in 12 Hole	1	
---	----------------	--------	--------------------------	---	--

Detail Description: R&R Bedknives are manufactured from high carbon-boron alloy steel and then hardened to RC46-49 to match the temper of our reel blades and original equipment reels. Bedknives are surface ground on the top and front edge and straightened three times before being packaged with oil for rust prevention. All R&R Bedknives now have an increased front edge grind for added life. All R&R Bedknives are guaranteed against defects in material and workmanship under normal use for the life of the part.:

Other Parts Available

10	RET16897	ET16897	Eyebolt	2	
11	RET17361	ET17361	Nut - Flanged Eyebolt	2	
12	R302-5	JD7797, JD7842, JD7844	Fitting - Grease	4	
13	RJD8905	JD8905	Bearing	2	
13	RJD8960	JD8960	Tapered Bearing Cone	2	
14	RMT74	MT74	Bushing - Roller Bkt	4	
15	R32120-65	N51168	Ring - Retaining	1	
16	RP48362	P48362	Locknut - Reel	2	
16	RMT1211	MT1211	Locknut - 7/8-14 All Metal	2	
17	R14M7396	14M7396	Locknut - Flanged Nyloc	12	
18	R19M7573	19M7573	Screw - Bedknife M8-1.25 x 20	12	
34	RET17754	ET17754	Deflector - 26 Grass	1	

All original equipment manufacturers names and part numbers are used for identification purposes only, and we are in no way implying that our products are original equipment parts. Prices subject to change without notice.



Replaces John Deere 2653B Reel Mower Parts

Cutting Unit - Serial up to 030000
Reel & Bedknife



Item No	R&R Part No.	OEM Part No.	Description	Qty Req	Order Quantity
34	RMT1979	MT1979	Deflector - 30 Grass	1	
35	RAET11300	AET11300	Frame - 26 in	1	
35	RAMT1054	AMT1054	Frame - 30 in	1	
35	RAET11305	AET11305	Frame	1	
<i>Tech Note: Fits 2653B:</i>					
36	RET17633	ET17633	Adjuster - L. Front / R. Rear	2	
36	RMT6595	MT6595	Adjuster - L. Front / R. Rear	2	
37	RAMT100	AMT100, ET17632	Adjuster - R. Front / L. Rear	2	
38	RAET11311	AET11311	Clamp - Roller Bkt	4	
39	RET17646	ET17646	Stud - Clamp	4	
40	RET17760	ET17760	Pin - 26 Deflector	1	
40	RMT1980	MT1980	Pin - 30 Deflector	1	
41	RR50647	J16931, R50647	Pin - Hair Cotter	1	
43	R19M7783	19M7783	Screw - Bed Bar Mount	10	
44	RET17645	MT7001	Cap - Reel Bearing Housing	1	
45	RET16424	ET16424	Washer	6	
46	RET16678	ET16678	Washer - Spring	10	
47	RMT6338	MT6338	Bolt - Shoulder	2	
47	RET16425	ET16425	Bolt	2	
48	RA31867	A31867	Locknut	2	
49	RH138435	H138435	Screw - Set	4	

All original equipment manufacturers names and part numbers are used for identification purposes only, and we are in no way implying that our products are original equipment parts. Prices subject to change without notice.



Replaces John Deere 2653B Reel Mower Parts

Cutting Unit - Serial up to 030000
Reel & Bedknife



Item No	R&R Part No.	OEM Part No.	Description	Qty Req	Order Quantity
50	R14M7152	14M7152	Nut - 10mm x 1.5 Jam	4	
51	RET17630	ET17630	Spring - Torsion RH	1	
52	RMT1520	MT1520	Label	2	
53	RET17629	ET17629	Spring - Torsion LH	1	
54	RMT2368	MT2368	Scraper - Assy 26 Solid Roller	1	
<i>Detail Description: Includes: RET17630, RET17629, RET17758, R34M7010 RMT2594 R14M7303 & R21M7246:</i>					
54	RAMT1379	AMT1379	Scraper - Assy Solid Roller 30	1	
55	RET17758	ET17758	Pin - 26 Scrapers	1	
55	RMT1982	MT1982	Pin - 30 Scrapers	1	
55	RET16931	ET16931	Pin - 30 Scraper	1	
56	R34M7010	34M7010	Pin - Spring	1	
57	R19M8197	19M8197	Bolt - Hx HD	4	
58	R14M7296	14M7296	Nut - 10mm x 1.5 Flanged	8	
59	R03M7194	03M7194	Bolt	4	
60	RET16572	ET16572	Nut - Hex	2	
61	RET17510	ET17510	Spring	1	
62	R24H1308	24H1308	Washer	4	
63	R21M7246	21M7246	Screw	4	
64	RMT2594	MT2594	Blade - 26 Scraper	1	
64	RMT2593	MT2593	Blade - 30 Scraper	1	
65	R14M7303	14M7303	Nut - 6mm x 1.0 Flanged	4	

All original equipment manufacturers names and part numbers are used for identification purposes only, and we are in no way implying that our products are original equipment parts. Prices subject to change without notice.



Replaces John Deere 2653B Reel Mower Parts

Cutting Unit - Serial up to 030000
Reel & Bedknife



Item No	R&R Part No.	OEM Part No.	Description	Qty Req	Order Quantity
66	RBM18555	BM18555	Scraper Kit - 26in SET/3	1	
<i>Tech Note: Fits J.D. 26" Grooved Rollers:</i>					
<i>Detail Description: Includes 18 ea: R03M7251 Bolt, R14M7303 Nut; 3 ea: R34M7010 Pin, R500563 Scraper, R500565 Scraper Bar, RET17629 LH Spring, RET17630 RH Spring, RET17758 Pin:</i>					
66	RBM18554	BM18554	Scraper Kit - 30in SET/3	1	
<i>Tech Note: Fits J.D. 30" Grooved Rollers:</i>					
<i>Detail Description: Includes 18 ea: R03M7251 Bolt, R14M7303 Nut; 3 ea: R34M7010 Pin, R500562 Bar, R500564 Scraper, RET17629 LH Spring, RET17630 RH Spring, RMT1982 Pin:</i>					
67	R500565	MT2368	Bar - Scraper 26	1	
67	R500562		Bar - 30 Scraper	1	
68	RMT5159	MT5159	Scraper - Fits J.D. LH End	1	
69	RMT2342	MT2342	Section - Grooved Scraper 3 Tooth	1	
70	RMT2340	MT2340	Scraper - Fits J.D. Center	1	
71	RMT5158	MT5158	Scraper - Fits J.D. RH End	1	
72	RMT2341	MT2341	Section - Grooved Scraper 4 Tooth	2	
74	R500560		Scraper - Fits 26 Rlr	1	
<i>Tech Note: Fits R&R Grooved Rollers Only:</i>					
74	R500561		Scraper - Fits 30 Rlr	1	
<i>Tech Note: Fits R&R Grooved Rollers Only:</i>					
75	R03M7251	03M7251	Bolt - Gr. Roller Scraper	4	
76	R14M7400	14M7400	Locknut - 10mm	4	

All original equipment manufacturers names and part numbers are used for identification purposes only, and we are in no way implying that our products are original equipment parts. Prices subject to change without notice.



Replaces John Deere 2653B Reel Mower Parts

Cutting Unit - Serial up to 030000
Reel & Bedknife



Item No	R&R Part No.	OEM Part No.	Description	Qty Req	Order Quantity
77	R500563		Scraper - Fits 26 OEM Grooved Rlr	1	
77	R500564		Scraper - Fits 30 OEM Grooved Rlr	1	
79	RAET10880	AET10880, AMT2965	Adjuster - Reel	2	
81	RMT2527	MT2527	Shoe - Skid	2	
82	RMT6517	MT6517	Label - Warning	1	
83	RBM18607	BM18607	Scraper Kit - OEM Grooved Roller Set / 5	1	
<i>Detail Description: Includes 30 ea: R03M7251 Bolt, R14M7303 Bolt; 5 ea: R34M7010 Pin, R500569 Scraper, R500570 Bar, RET16931 Pin, RET17629 LH Spring, RET17630 RH Spring:</i>					
85	RH135891	H135891	Locknut - 10mm x 1.5 Flanged 10.9	2	
<i>Detail Description: High Strength:</i>					
86	RMT2407	MT2407	Bracket - Roller Scraper	5	
88	RAMT683	AMT683	Housing - Bearing w/Zerk and Seal	2	
88	RAET11203	AET11203	Housing - Bearing w/Seal and Zerk	2	
89	R254-90	JD8239	Tapered Bearing Cup	2	
90	RAET11303	AET11303	Backing Bar - 26 Bedknife	1	
90	RAMT1051	AMT1051	Backing Bar - 30 Bedknife	1	
91	RAN50688	AN50688	Seal - Reel - Fits 2653	2	
91	RMT1115	MT1115	Seal - Reel	2	
92	RET16896	ET16896	Bolt - Shoulder	2	

All original equipment manufacturers names and part numbers are used for identification purposes only, and we are in no way implying that our products are original equipment parts. Prices subject to change without notice.