

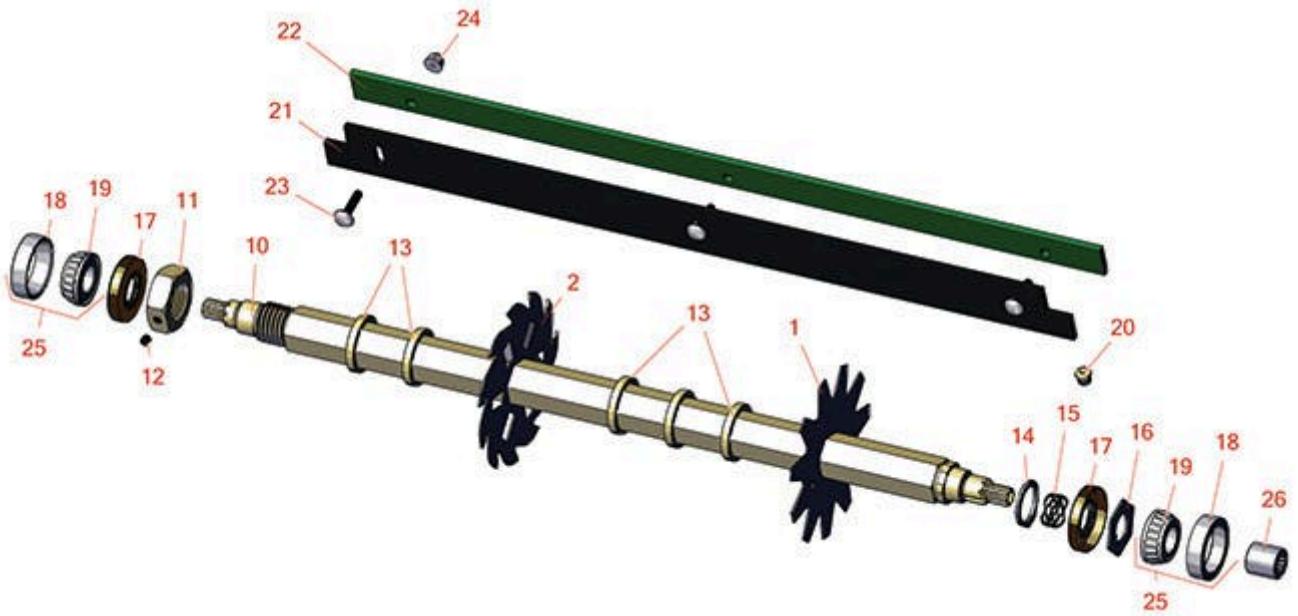


Replaces John Deere 3235 Reel Mower

Parts

Medium Verti-Cut Unit

Verti-Cut Reel & Frame



All original equipment manufacturers names and part numbers are used for identification purposes only, and we are in no way implying that our products are original equipment parts. Prices subject to change without notice.



Replaces John Deere 3235 Reel Mower Parts

Medium Verti-Cut Unit
Verti-Cut Reel & Frame



| Item No | R&R Part No. | OEM Part No. | Description | Qty Req | Order Quantity |
|---------|--------------|--------------|-------------|---------|----------------|
|---------|--------------|--------------|-------------|---------|----------------|

Verti-Cut Blades

| | | | | | |
|---|-----------------|---------------------|--------------------------------------|----|--|
| 1 | RAMT2703 | AMT2703, ET17719 | Blade - Vertical Mower | 27 | |
| 2 | R150209C | TCU26776 | Verti-Cut Blade - Carbide Tipped 2mm | 27 | |

Other Parts Available

| | | | | | |
|--|-----------------|-------------------|----------------------------------|----|--|
| 10 | RET17715 | ET17715 | Shaft - Vertical Mower | 1 | |
| 11 | RET17053 | ET17053 | Nut - 1-1/8-7 Jam Incl Set Screw | 1 | |
| 12 | R3245-35 | 22H841 | Screw - Set 1/4-28 x 1/4 | 1 | |
| 13 | RET17713 | ET17713 | Spacer - Vertical Mower Shaft | 80 | |
| 14 | RC17964 | C17964 | Ring - Retaining HD | 1 | |
| 15 | RET14592 | ET14592 | Spring - Reel Bearing | 1 | |
| 16 | RET16704 | ET16704 | Retainer | 1 | |
| 17 | RET14566 | ET14566 | Seal - Reel | 2 | |
| 18 | R254-79 | JD8226 | Cup - Bearing | 2 | |
| <i>Tech Note: Use R254-79M installation mandrel to properly install race.:</i> | | | | | |
| 19 | R254-78 | JD8188 | Tapered Bearing Cone | 2 | |
| 20 | R170714 | E14814 | Fitting - Pressure Relief | 2 | |
| 21 | RET17914 | ET17914 | Rubber Isolator - Verticut | 1 | |
| 22 | RAMT2704 | AMT2704, MT169 | Strap - Verticut Shield | 1 | |
| 23 | R03M7232 | 03M7232 | Bolt - Carriage M6-1.0 x 25 | 3 | |
| 24 | R14M7303 | 14M7303 | Nut - 6mm x 1.0 Flanged | 3 | |
| 25 | R500534 | | Bearing - with Cup | 2 | |

All original equipment manufacturers names and part numbers are used for identification purposes only, and we are in no way implying that our products are original equipment parts. Prices subject to change without notice.



Replaces John Deere 3235 Reel Mower Parts



*Medium Verti-Cut Unit
Verti-Cut Reel & Frame*

| Item No | R&R Part No. | OEM Part No. | Description | Qty Req | Order Quantity |
|---------|------------------|-----------------------------------|-------------------------|---------|----------------|
| 26 | RAET11038 | AET11038, AET11039, AT11038 | Coupler - V-Cut 8 Tooth | 1 | |

All original equipment manufacturers names and part numbers are used for identification purposes only, and we are in no way implying that our products are original equipment parts. Prices subject to change without notice.