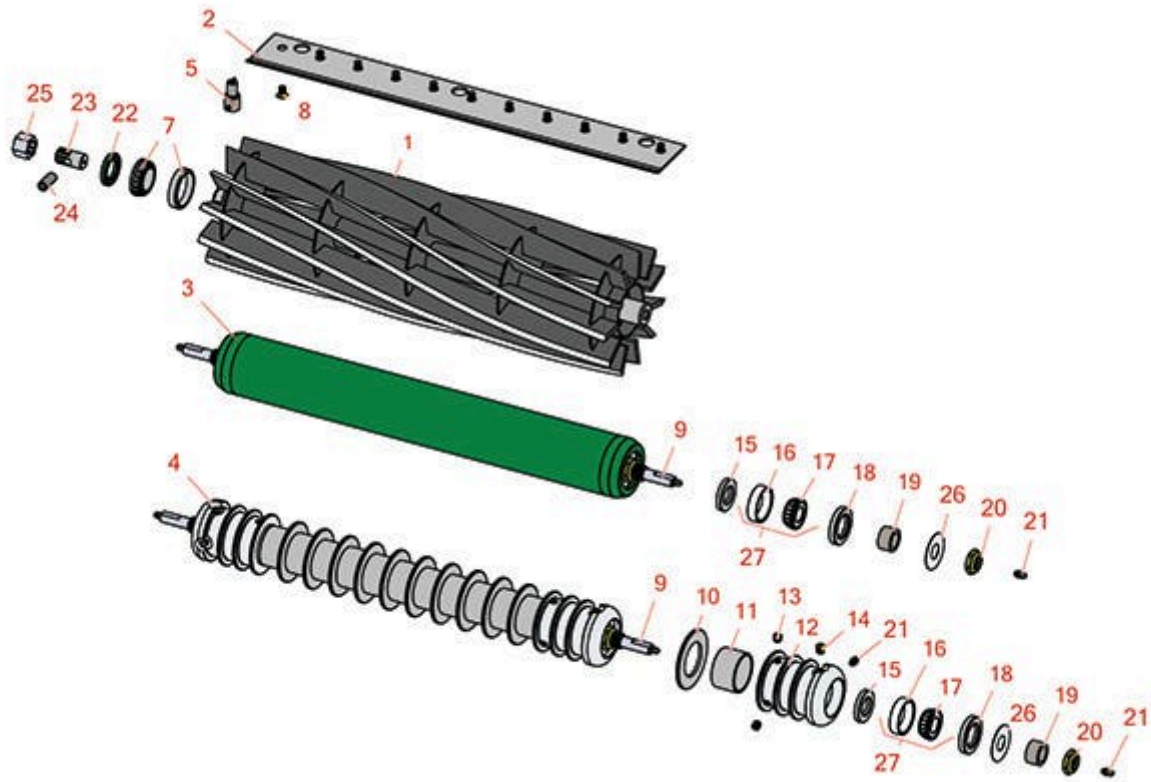




Replaces Ransomes 250 Parts

Cutting Unit
Reel & Bedknife



All original equipment manufacturers names and part numbers are used for identification purposes only, and we are in no way implying that our products are original equipment parts. Prices subject to change without notice.



Replaces Ransomes 250 Parts

Cutting Unit
Reel & Bedknife



Item No	R&R Part No.	OEM Part No.	Description	Qty Req	Order Quantity
---------	--------------	--------------	-------------	---------	----------------

1	R4113568	2206002, 4113568	Reel - 11 Blade w/Coupling	1	
---	-----------------	---------------------	----------------------------	---	--

1	R2206047	2206047	Reel - 7 Blade	1	
---	-----------------	---------	----------------	---	--

R&R Bedknives, Lifetime Guaranteed

2	R2202002	2202002	Bedknife - Thin 5mm	1	
---	-----------------	---------	---------------------	---	--

2	R2202167	2202167	Bedknife - Thick 5/16	1	
---	-----------------	---------	-----------------------	---	--

R&R Rollers

3	R170505	2206099	Roller - Smooth Tubular Steel	1	
---	----------------	---------	-------------------------------	---	--

Tech Note: Constructed with a through shaft, this heavy duty roller uses greasable tapered bearings for extended life.:

4	R170500	2206098	Roller - Grooved Repairable Steel	1	
---	----------------	---------	-----------------------------------	---	--

Tech Note: Constructed with a through shaft and greasable tapered bearings for extended life, this roller can be repaired by unscrewing the ends and replacing the series of washers and spacers.:

Service Tools

5	R51-0880		Bedknife Screw Driver Tool	0	
---	-----------------	--	----------------------------	---	--

Other Parts Available

7	R2208003	2208003, A209044	Bearing - with Cup	2	
---	-----------------	---------------------	--------------------	---	--

8	R150477	64249-01, A119001	Screw - Bedknife 5/16-18 x 1/2	11	
---	----------------	----------------------	--------------------------------	----	--

9	R170503		Shaft	1	
---	----------------	--	-------	---	--

10	R150673		Washer - 3 Repairable Roller	10	
----	----------------	--	------------------------------	----	--

11	R150671		Spacer - 2 3/4 / 3 Rollers 13/16 L	0	
----	----------------	--	------------------------------------	---	--

11	R150676		Spacer - 2-3/4 Dia x 1-1/4 L	11	
----	----------------	--	------------------------------	----	--

All original equipment manufacturers names and part numbers are used for identification purposes only, and we are in no way implying that our products are original equipment parts. Prices subject to change without notice.



Replaces Ransomes 250 Parts

Cutting Unit
Reel & Bedknife



Item No	R&R Part No.	OEM Part No.	Description	Qty Req	Order Quantity
12	R100103		Roller End - Grooved	2	
13	R150691		Screw - Set Nyloc 3/8-16 x 3/8	4	
14	R170714		Fitting - Pressure Relief	2	
15	R253-122		Seal	2	
16	R254-79		Cup - Bearing	2	
<i>Tech Note: Use R254-79M installation mandrel to properly install race.:</i>					
17	R254-78		Tapered Bearing Cone	2	
18	R253-117		Seal - Outer Triple Lip	2	
19	R5-4038		Sleeve - Wear Reel Shaft	2	
20	R3296-15		Locknut - 3/4-16 Nylon Jam	2	
21	R302-5		Fitting - Grease	2	
22	R2208011-01	2208011-01, A230019	Seal - Oil Reel	1	
23	R4114239	4114239	Insert - Splined Reel	1	
24	R64176-05	64176-05	Pin - Spiral Roll Reel	1	
25	R2722589	2722589	Coupling - Reel	1	
26	R150504		Washer	2	
27	R500534	2208006	Bearing - with Cup	2	

All original equipment manufacturers names and part numbers are used for identification purposes only, and we are in no way implying that our products are original equipment parts. Prices subject to change without notice.