

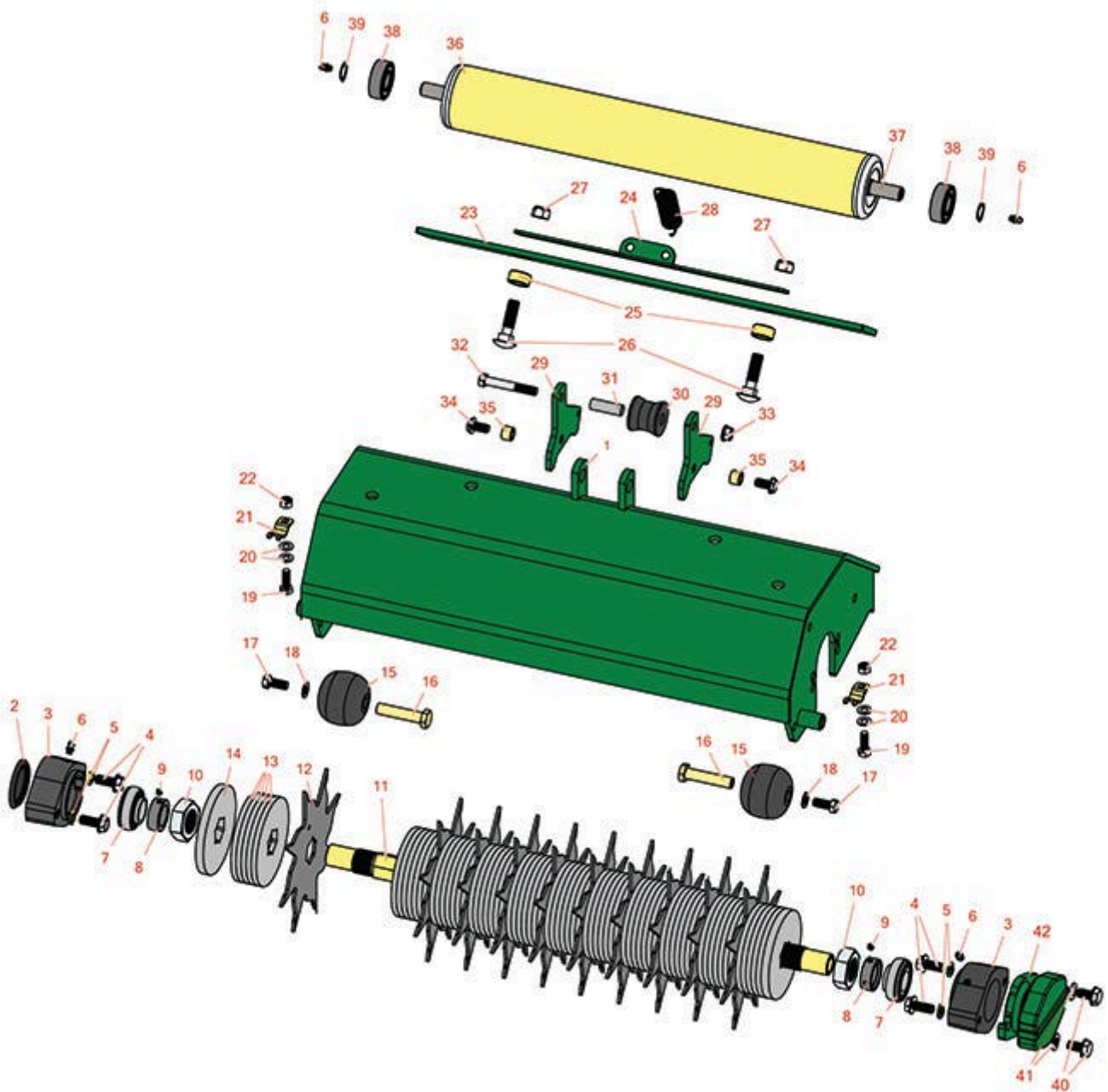


# Replaces R&R Products Greens Max

## 2200LP Parts

Spiker Unit

Spiker Reel & Frame



All original equipment manufacturers names and part numbers are used for identification purposes only, and we are in no way implying that our products are original equipment parts. Prices subject to change without notice.



# Replaces R&R Products Greens Max

## 2200LP Parts

Spiker Unit

Spiker Reel & Frame



Item No	R&R Part No.	OEM Part No.	Description	Qty Req	Order Quantity
1	<b>R100-6443G</b>		Frame - Spiker - Green	1	
2	<b>R150485</b>	R2410-30	Cap - Protective Bearing Housing	1	
3	<b>R95-7148</b>		Housing - Bearing Reel	2	
4	<b>R33115-025</b>	R48-7780	Bolt - Hex HD M10-1.5 x 25	4	
5	<b>R48-9590</b>	R01-176-0040, R42-9600, R48-9690, R63-7780	Washer - Lock 10mm	4	
6	<b>R302-5</b>	R173-0, R21-6010, R255825, R302-37, R302-47, R302-57, R302-58, R302-6, R31-0300, R32-9660, R471214, R471223, R471226, R60-0800, R62-3880, R92-4181, RJD7797, RJD7842, RJD7844, RM0004	Fitting - Grease	2	
7	<b>R71-1360</b>	R251-219, R251-253, R251-254, R251-320, R88-7880, R94-3405	Bearing	2	
8	<b>R251-77</b>		Collar - Bearing	2	
9	<b>R3245-35</b>	R09205, R22H841	Screw - Set 1/4-28 x 1/4	2	

All original equipment manufacturers names and part numbers are used for identification purposes only, and we are in no way implying that our products are original equipment parts. Prices subject to change without notice.



# Replaces R&R Products Greens Max

## 2200LP Parts

Spiker Unit

Spiker Reel & Frame



Item No	R&R Part No.	OEM Part No.	Description	Qty Req	Order Quantity
10	<b>R3220-18</b>	R67-5840	Nut - Jam V-Cut Shaft	2	
11	<b>R99-1611</b>		Shaft - Spiker	1	
12	<b>R99-1612</b>		Spiker Blade - 10 GA .134 w/Hex Hol	10	
13	<b>R99-1613</b>		Spacer - Blade	73	
14	<b>R99-1635</b>		Spacer - Blade .375	2	
15	<b>R99-4210</b>	R99-4140	Basket Roller - Smooth Anti Scalp	2	
16	<b>R99-4209</b>		Shaft - Special	2	
17	<b>R400260</b>	R01-178-0605, R18-4100, R19-8270, R323-3, R323-33, R323-34, R323-5	Bolt - Hex HD 3/8-16 x 7/8	2	
18	<b>R3256-45</b>		Washer - Flat .733 x .381 x .058 YZ	2	
19	<b>R57-6380</b>	R33114-025, R48-9460, R60-4540	Bolt - Hex HD M8-1.25 x 25	2	
20	<b>R3256-74</b>		Washer - Flat	4	
21	<b>R99-8168</b>	R95-1637	Collar - Bracket HOC	2	
22	<b>R33024-00</b>		Locknut - 8mm x 1.25	2	
23	<b>R99-1637G</b>		Scraper Plate - Green	1	
24	<b>R100-9818G</b>		Plate - Spring Mounting - Green	1	
25	<b>R74-3730</b>	R217-96	Spacer	2	
26	<b>R33126-045</b>		Bolt - Carriage M12-1.75 x 45	2	
27	<b>R33026-00</b>		Locknut - 12mm x 1.75mm ESNA	2	

All original equipment manufacturers names and part numbers are used for identification purposes only, and we are in no way implying that our products are original equipment parts. Prices subject to change without notice.



# Replaces R&R Products Greens Max

## 2200LP Parts

Spiker Unit

Spiker Reel & Frame



Item No	R&R Part No.	OEM Part No.	Description	Qty Req	Order Quantity
28	<b>R92-8934</b>	R88-6330	Spring - Extension	1	
29	<b>R100-6446G</b>		Plate - Pivot - Green	2	
30	<b>R100-6449</b>		Lift Roller	1	
31	<b>R100-6448</b>		Spacer - Lift Roller	1	
32	<b>R101526</b>	321-11, R01-150-0970, R01-178-0620, R20-53-AGD, R3224-8, R323-12, R323-31, R323-47	Bolt - Hex HD 3/8-16 x 2-1/2 GR5	1	
33	<b>R3296-39</b>	3296-39, R32127-25, R32128-36, R3296-17, R3296-22, R915663P, R99-7443	Locknut - 3/8-16 Nylon	1	
34	<b>R3234-1</b>		Bolt - Flanged Serrated Hex HD 3/8-16 x 3/4	2	
35	<b>R100-6447</b>		Spacer	2	
36	<b>R99-1615</b>		Roller - Rear 3	1	
37	<b>R93-2466</b>		Shaft - Rear Roller	1	
38	<b>R93-2559</b>	R204-060, RTC23201	Bearing	2	
39	<b>R458013</b>	R30-0580, R32120-72, R93-2525, R936125	Ring - Retaining	2	
40	<b>R93-2569</b>		Bolt - Hex Washer Nyloc M10	4	

All original equipment manufacturers names and part numbers are used for identification purposes only, and we are in no way implying that our products are original equipment parts. Prices subject to change without notice.



# Replaces R&R Products Greens Max

## 2200LP Parts

*Spiker Unit*

*Spiker Reel & Frame*



Item No	R&R Part No.	OEM Part No.	Description	Qty Req	Order Quantity
41	<b>R453011</b>	3256-24, 453011, R01-166-0100, R01-166-0120, R01-166-0270, R01-166-0500, R01-166-0600, R01-166-0620, R132-4593, R237-12, R24-10-AD, R24-11-AD, R24-11-BD, R24-12-AD, R24-12-BD, R30-9310, R32-8190, R3256-24, R3256-3, R3256-36, R3256-4, R47-9950	Washer - Flat 3/8 SAE Y/Zinc	2	
42	<b>R95-1642G</b>		Counterweight - Green	1	

All original equipment manufacturers names and part numbers are used for identification purposes only, and we are in no way implying that our products are original equipment parts. Prices subject to change without notice.