

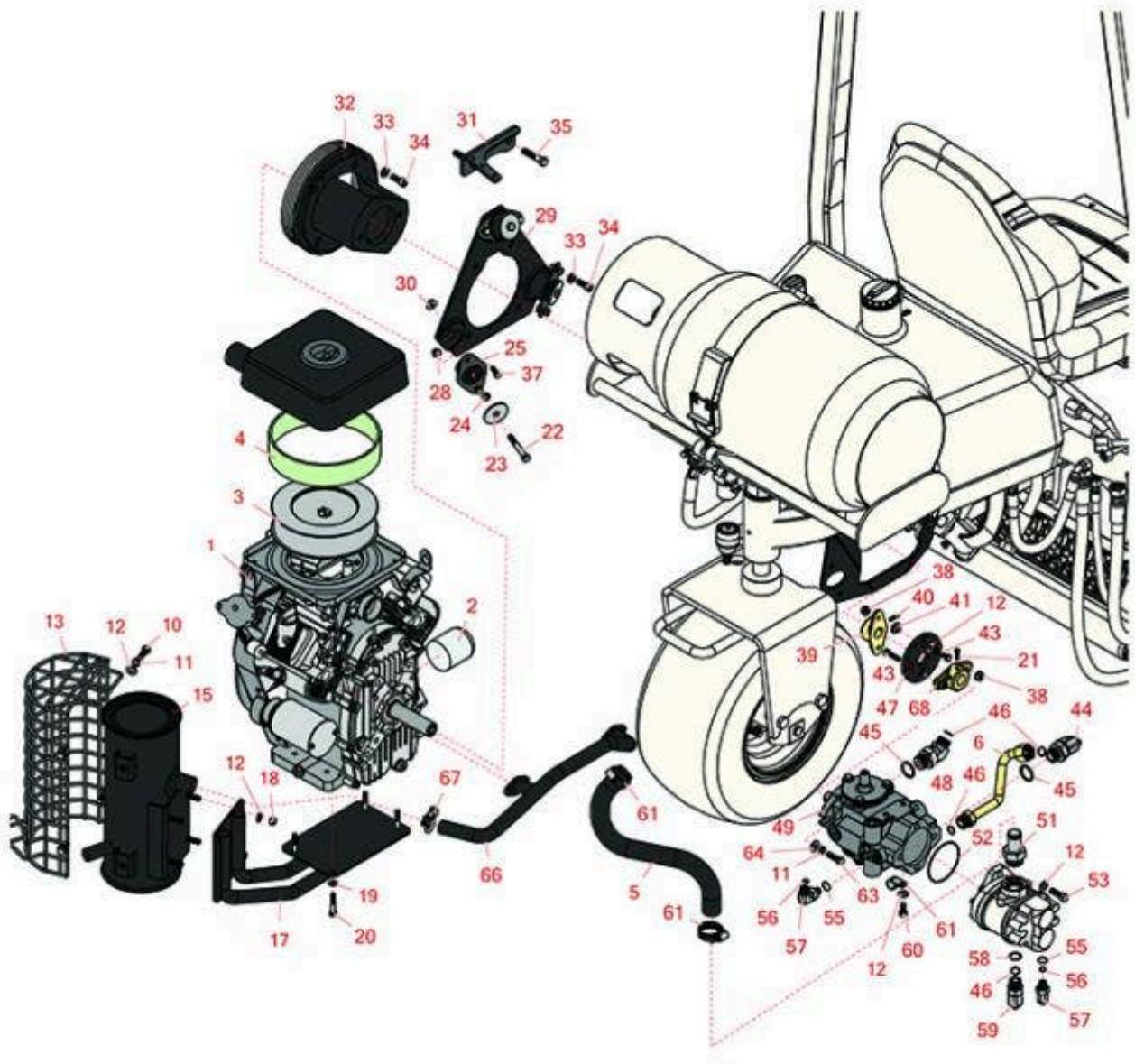


# Replaces R&R Products Greens Max

## 2200LP Parts

Traction Unit

Engine & Hydrostat



All original equipment manufacturers names and part numbers are used for identification purposes only, and we are in no way implying that our products are original equipment parts. Prices subject to change without notice.



# Replaces R&R Products Greens Max

## 2200LP Parts

Traction Unit  
Engine & Hydrostat



Item No	R&R Part No.	OEM Part No.	Description	Qty Req	Order Quantity
<b>Engine</b>					
1	RAKFH601DES01S		Kawasaki Engine	1	
<b>Filters</b>					
2	RAK49065-2078		Kawasaki Oil Filter (2078S)	1	
3	RAK11013-0728	RAK11013-7011	Kawasaki Element-Air Filter	1	
4	RAK11013-7007		Element - Foam	1	
<b>Hoses</b>					
5	R105-8285		Hose - Inlet - Pump	1	
6	R105-8307		Tube-Hyd, Traction	1	
<b>Other Parts Available</b>					
10	R323-6	323-6, R01-150-0010, R01-178-0608, R20-47-AD, R20-47-AGD, R3224-2, R49-3510, R908034P, R908332	Bolt - Hex HD 3/8-16 x 1 GR5 YZ	4	
11	R3253-21	3253-21, R215-51, R30-8470, R7-1912, RMT3949	Washer - Lock 3/8	6	

All original equipment manufacturers names and part numbers are used for identification purposes only, and we are in no way implying that our products are original equipment parts. Prices subject to change without notice.



# Replaces R&R Products Greens Max

## 2200LP Parts

*Traction Unit  
Engine & Hydrostat*



Item No	R&R Part No.	OEM Part No.	Description	Qty Req	Order Quantity
12	<b>R453011</b>	3256-24, 453011, R01-166-0100, R01-166-0120, R01-166-0270, R01-166-0500, R01-166-0600, R01-166-0620, R132-4593, R237-12, R24-10-AD, R24-11-AD, R24-11-BD, R24-12-AD, R24-12-BD, R30-9310, R32-8190, R3256-24, R3256-3, R3256-36, R3256-4, R47-9950	Washer - Flat 3/8 SAE Y/Zinc	11	
13	<b>R112-0291</b>		Shield - Muffler	1	
15	<b>R110-4001</b>		Muffler	1	
17	<b>R112-9196-03</b>		Mount-Muffler	1	
18	<b>R32152-2</b>	R7-2306	Nut-Lock, Cone	4	
19	<b>R453009</b>	3256-3, R01-166-0400, R24-10-BD, R24-9-AD, R24H1136, R32-9650, R3256-2, R3256-23, R3256-67, R3290-217, R3556-3, R4-2390, R452006, R7-0152	Washer - Flat 5/16 SAE	4	

All original equipment manufacturers names and part numbers are used for identification purposes only, and we are in no way implying that our products are original equipment parts. Prices subject to change without notice.



# Replaces R&R Products Greens Max

## 2200LP Parts

*Traction Unit  
Engine & Hydrostat*



Item No	R&R Part No.	OEM Part No.	Description	Qty Req	Order Quantity
20	<b>R101344</b>	R322-8, R400194	Bolt - Hex HD 5/16-18 x 1-3/4	4	
21	<b>R3241-6</b>		Screw - Set Sq. HD. 1/4 x3/4	4	
22	<b>R101526</b>	321-11, R01-150-0970, R01-178-0620, R20-53-AGD, R3224-8, R323-12, R323-31, R323-47	Bolt - Hex HD 3/8-16 x 2-1/2 GR5	3	
23	<b>R83-1040</b>		Washer - Engine	3	
24	<b>R83-1050</b>		Spacer	2	
25	<b>R93-5265</b>	R107-2560, R125-5244, R366879	Mount - Engine	3	
28	<b>R445722</b>	R30-8980, R32128-2, R32128-20	Nut - Serrated Washer	6	
29	<b>R85-8120-03</b>	R85-8120	Mounting Plate - Engine	1	
30	<b>R32128-43</b>	R30-8990, R3290-357	Nut - Flanged Whiz - 3/8-16	2	
31	<b>R105-4307-03</b>		Bracket-Spring	1	
32	<b>R83-1060-03</b>	R83-1060	Adapter - Pump	1	
33	<b>R3253-6</b>	R01-166-0710, R23-12-GD, R59-7590, RF4076	Washer - Lock 7/16 Zinc	4	
34	<b>R3274-7</b>		Bolt - Soc HD Cap 3/8-16 x 1	2	
35	<b>R324-8</b>	R01-178-0716	Bolt - Hx HD 7/16-14 x 2	2	

All original equipment manufacturers names and part numbers are used for identification purposes only, and we are in no way implying that our products are original equipment parts. Prices subject to change without notice.



# Replaces R&R Products Greens Max

## 2200LP Parts

*Traction Unit  
Engine & Hydrostat*



Item No	R&R Part No.	OEM Part No.	Description	Qty Req	Order Quantity
37	<b>R322-3</b>	R01-150-1420, R01-178-0506, R09109, R20-24-AD, R20-24-AGD, R48-9270, R513339, R908017P, RB311201	Bolt - Hex HD 5/16-18 x 3/4	6	
38	<b>R3296-39</b>	3296-39, R32127-25, R32128-36, R3296-17, R3296-22, R915663P, R99-7443	Locknut - 3/8-16 Nylon	4	
39	<b>R27-1960</b>	R110-5236	Hub - Engine	2	
40	<b>R3241-7</b>		Set Screw - 1/4-20 x 1/2 Sq HD Nyloc	4	
41	<b>R27-6600</b>		Spacer - Pump Coupling	4	
43	<b>R400190</b>	R01-150-0720, R01-178-0510, R30-8680, R322-6, R513343	Bolt - Hex HD 5/16-18 x 1-1/4 GR5	4	
44	<b>R340-139</b>		Hydraulic Fitting - 90 Deg	1	
45	<b>R237-81</b>		O-Ring	1	
46	<b>R237-65</b>		O-Ring	1	
47	<b>R44-2230</b>	R115-4523, R27-6560, R80-8650	Coupling - Rubber - Pump	1	
48	<b>R340-156</b>		Hydraulic Fitting	1	
49	<b>R105-0494</b>	R100-3174, R98-4609	Hydrostat Assy	1	

All original equipment manufacturers names and part numbers are used for identification purposes only, and we are in no way implying that our products are original equipment parts. Prices subject to change without notice.



# Replaces R&R Products Greens Max

## 2200LP Parts

*Traction Unit  
Engine & Hydrostat*



Item No	R&R Part No.	OEM Part No.	Description	Qty Req	Order Quantity
51	R354-78		Connector-Hose	1	
52	R353-949	R60-3520	O-Ring	1	
53	R3274-1		Bolt - 3/8-16 x 1 1/4 Soc HD Cap	2	
55	R237-79		O-Ring	2	
56	R237-22	R107-8844, R232-72, R237-78	O-Ring	2	
57	R340-18		Hydraulic Fitting	2	
58	R237-80	R327-80	O-Ring	1	
59	R340-17		No 10 Male Orfs x No 10 Male Orb	1	
60	R400258	R01-150-0800, R01-178-0600, R01-178-0606, R20-45-AD, R31-0200, R31-9910, R3224-1, R323-4	Bolt - Hex HD 3/8-16 x 3/4	1	
61	R2412-41		Clamp	1	
63	R400264	323-7, R01-150-0180, R01-178-0610, R19H1732, R20-48-AD, R20-48-AGD, R32-9160, R3224-3, R323-29, R323-7, R400264, R908035P	Bolt - Hex HD 3/8-16 x 1-1/4	2	
64	R100-4852		Washer - Hardened	2	
66	R108-6539	R83-1080	Exhaust Manifold	1	

All original equipment manufacturers names and part numbers are used for identification purposes only, and we are in no way implying that our products are original equipment parts. Prices subject to change without notice.

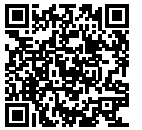


# Replaces R&R Products Greens Max

## 2200LP Parts

*Traction Unit*

*Engine & Hydrostat*



Item No	R&R Part No.	OEM Part No.	Description	Qty Req	Order Quantity
67	<b>R2412-37</b>	R01-170-0150, R2112-11	Clamp - Muffler 1-1/4	1	
68	<b>R110-5227</b>	R93-2589	Hub - Hydro Pump - 7/8 Bore	1	

All original equipment manufacturers names and part numbers are used for identification purposes only, and we are in no way implying that our products are original equipment parts. Prices subject to change without notice.