

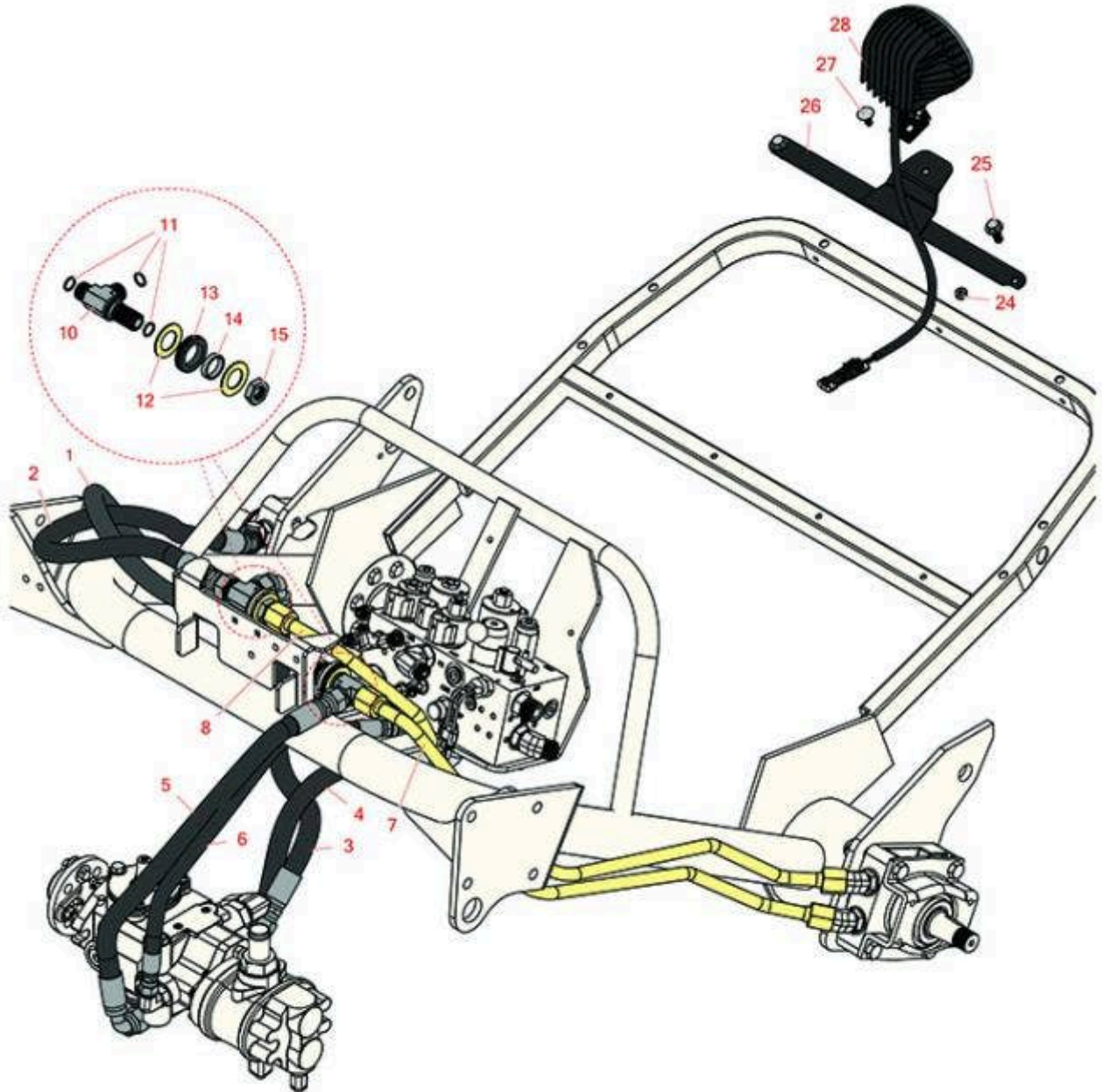


# Replaces R&R Products Greens Max

## 2200LP Parts

Traction Unit

Hydraulic Traction System



All original equipment manufacturers names and part numbers are used for identification purposes only, and we are in no way implying that our products are original equipment parts. Prices subject to change without notice.



# Replaces R&R Products Greens Max

## 2200LP Parts

Traction Unit

Hydraulic Traction System



Item No	R&R Part No.	OEM Part No.	Description	Qty Req	Order Quantity
<b>Hoses</b>					
1	R105-4333		Hydraulic Hose Assy	1	
2	R105-4336		Hydraulic Hose Assy	1	
3	R105-4332		Hydraulic Hose Assy	1	
4	R105-4342		Hydraulic Hose Assy	1	
5	R99-6193		Hydraulic Hose Assy	1	
6	R108-6511		Hydraulic Hose Assy	1	
7	R112-0203		Tube-Hyd	1	
8	R112-0204		Tube-Hyd	1	
<b>Other Parts Available</b>					
10	R94-5350		Tee-Bulkhead	2	
11	R237-65		O-Ring	6	
12	R69-9010		Washer	4	
13	R240-3		Grommet- Rubber	2	
14	R69-9000	R125-1984	Spacer	2	
15	R340-74		Locknut - Bulkhead	2	
24	R301504	R32127-24, R32146-17, R3296-16, R3296-42, R915661P, RM40333	Locknut - ESNA 1/4-20	1	
25	R32144-14	R32104-32, R32104-49	Bolt - Hex Washer 5/16-18 x 5/8	2	
26	R151536		Light Bar	1	

All original equipment manufacturers names and part numbers are used for identification purposes only, and we are in no way implying that our products are original equipment parts. Prices subject to change without notice.



# Replaces R&R Products Greens Max 2200LP Parts

*Traction Unit  
Hydraulic Traction System*



Item No	R&R Part No.	OEM Part No.	Description	Qty Req	Order Quantity
27	<b>R3230-1</b>	R01-173-0506, R3230-20, R900037P	Bolt - Carriage 5/16-18 x 3/4	1	
28	<b>R151712</b>	R108-6471, R112-9177, R94-9024	LED Oval Work Light - 12 LED 30w	1	

All original equipment manufacturers names and part numbers are used for identification purposes only, and we are in no way implying that our products are original equipment parts. Prices subject to change without notice.