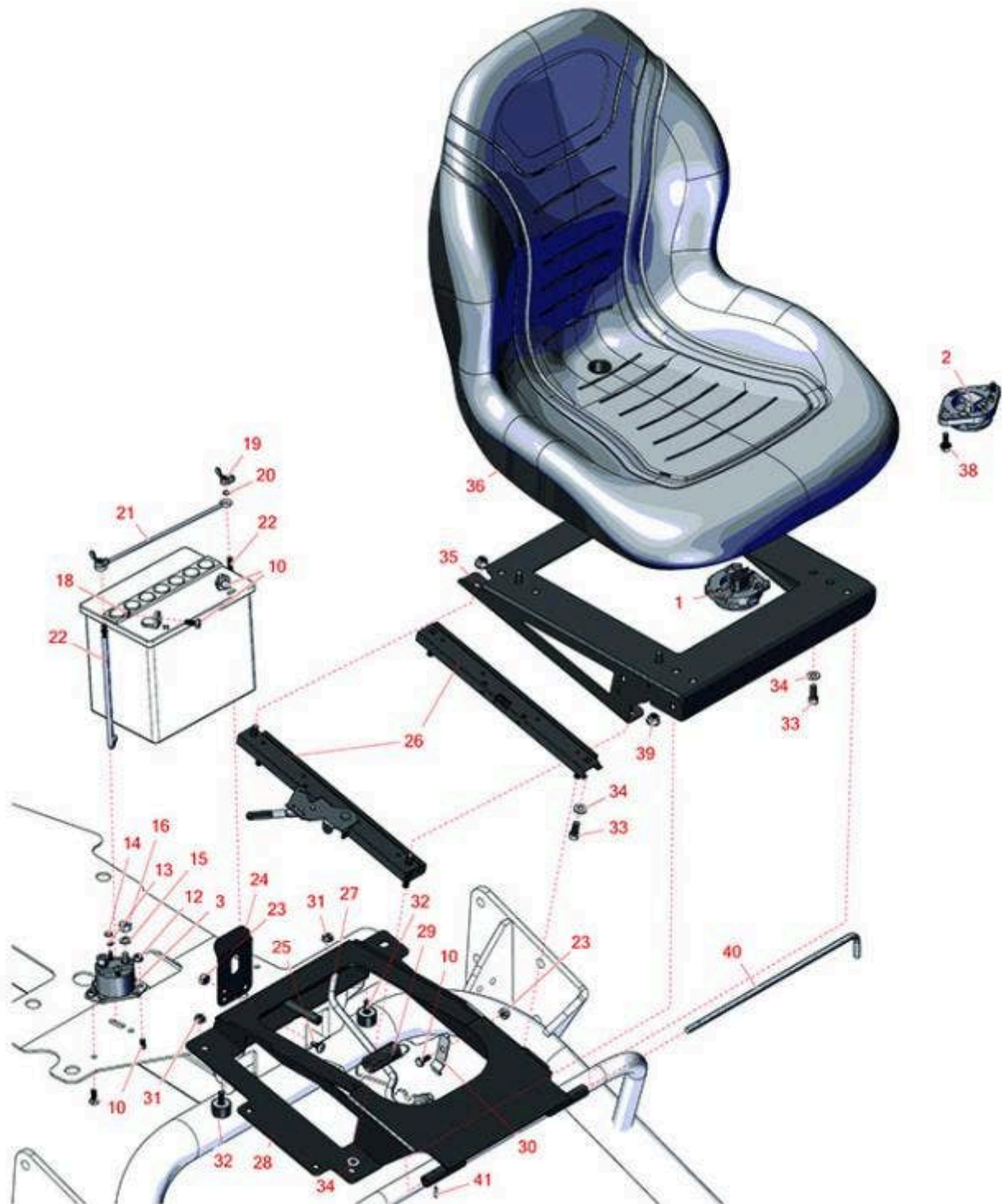




# Replaces R&R Products Greens Max 2200LP Parts

*Traction Unit  
Seat & Battery*



All original equipment manufacturers names and part numbers are used for identification purposes only, and we are in no way implying that our products are original equipment parts. Prices subject to change without notice.



# Replaces R&R Products Greens Max

## 2200LP Parts

Traction Unit  
Seat & Battery



| Item No | R&R Part No. | OEM Part No. | Description | Qty Req | Order Quantity |
|---------|--------------|--------------|-------------|---------|----------------|
|---------|--------------|--------------|-------------|---------|----------------|

### Gauges and Controls

|   |                 |                       |  |   |  |
|---|-----------------|-----------------------|--|---|--|
| 1 | <b>R151541</b>  |                       | Delta Seat Switch - Twist Mount 1 Pole Normally Open | 0 |  |
| 2 | <b>R92-6282</b> | R554390,<br>RAET10449 | Switch - Kill - Seat                                 | 1 |  |
| 3 | <b>R28-4210</b> |                       | Solenoid   | 1 |  |

### Other Parts Available

|    |                 |  |                            |   |  |
|----|-----------------|--|----------------------------|---|--|
| 10 | <b>R400106</b>  | R321-3,<br>R513315,<br>R908002P  | Bolt - Hex HD 1/4-20 x 5/8 | 4 |  |
| 12 | <b>R32149-2</b> | R32128-11,<br>R3290-158,<br>R3290-23   | Nut-Keps                   | 2 |  |
| 13 | <b>R3254-1</b>  | R19-0820,<br>R33-7-FHD   | Washer- Lock - Int         | 2 |  |
| 14 | <b>R444312</b>  | R22-9-BJD,<br>R26-2360,<br>R26-4370,<br>R3219-12,<br>R3219-14,<br>R48-9280,<br>R513287,<br>R915561   | Nut - 10-32                | 2 |  |
| 15 | <b>R3253-4</b>  | R01-166-0110,<br>R01-166-0510,<br>R09053,<br>R23-10-GD,<br>R24-7170,<br>R30-8520,<br>R42-9850,<br>R48-9350,<br>R48-9360,<br>R48-9570,<br>R68-9420,<br>R99-7577 | Washer - Lock 5/16 Zinc    | 2 |  |

All original equipment manufacturers names and part numbers are used for identification purposes only, and we are in no way implying that our products are original equipment parts. Prices subject to change without notice.



# Replaces R&R Products Greens Max 2200LP Parts

*Traction Unit  
Seat & Battery*



| Item No | R&R Part No.        | OEM Part No.   | Description                    | Qty Req | Order Quantity |
|---------|---------------------|--|--------------------------------|---------|----------------|
| 16      | <b>R3218-13</b>     |  | Nut-Jam, Brass                 | 2       |                |
| 18      | <b>R443102</b>      | R01-188-0420,<br>R22-11-AJD,<br>R3217-5                                    | Nut - 1/4-20 Yellow Zinc       | 2       |                |
| 19      | <b>R09030</b>       | R32103-1,<br>R32103-12,<br>R32103-22                                       | Nut - Wing 1/4                 | 2       |                |
| 20      | <b>R237-143</b>     |  | O-Ring                         | 2       |                |
| 21      | <b>R100-6434</b>    |  | Rod - Battery                  | 1       |                |
| 22      | <b>R100-6435</b>    | R56-7720   | Post - Battery - Stainless     | 2       |                |
| 23      | <b>R301504</b>      | R32127-24,<br>R32146-17,<br>R3296-16,<br>R3296-42,<br>R915661P,<br>RM40333 | Locknut - ESNA 1/4-20          | 2       |                |
| 24      | <b>R66-2630</b>     |  | Latch - Seat                   | 1       |                |
| 25      | <b>R3229-1</b>      | R01-173-0406,<br>R01-178-0408,<br>R3229-25,<br>R900015P                    | Bolt - 1/4-20 x 3/4 - Carriage | 2       |                |
| 26      | <b>R150224</b>      | R133-8896,<br>R92-8990,<br>R92-8991  | Adjusters - Seat (Set of 2)    | 2       |                |
| 27      | <b>R92-8934</b>     | R88-6330   | Spring - Extension             | 1       |                |
| 28      | <b>R106-4643</b>    |  | Rod-Prop,seat                  | 1       |                |
| 29      | <b>R105-0464-03</b> |  | Seat Plate Assy                | 1       |                |
| 30      | <b>R68-5310</b>     |  | Clip - Rod - Prop              | 1       |                |
| 31      | <b>R32128-33</b>    |  | Nut - 1/4-20 Flanged Serr      | 2       |                |

All original equipment manufacturers names and part numbers are used for identification purposes only, and we are in no way implying that our products are original equipment parts. Prices subject to change without notice.



# Replaces R&R Products Greens Max 2200LP Parts

Traction Unit  
Seat & Battery



| Item No   | R&R Part No.        | OEM Part No.   | Description                          | Qty Req | Order Quantity |
|---|---------------------|--|--------------------------------------|---------|----------------|
| 32  | <b>R1-523420</b>    |  | Bumper - Rubber                      | 2       |                |
| 33  | <b>R434024</b>      | 434024,<br>R3274-12  | Bolt - Soc HD Cap 5/16-18 x 3/4      | 8       |                |
| 34  | <b>R453009</b>      | 3256-3,<br>R01-166-0400,<br>R24-10-BD,<br>R24-9-AD,<br>R24H1136,<br>R32-9650,<br>R3256-2,<br>R3256-23,<br>R3256-67,<br>R3290-217,<br>R3556-3,<br>R4-2390,<br>R452006,<br>R7-0152 | Washer - Flat 5/16 SAE               | 8       |                |
| 35  | <b>R105-0466-03</b> |  | Plate-Seat, Upper                    | 1       |                |
| 36  | <b>RMXB200GY</b>    | R100-3187,<br>R1001774,<br>R104-4620,<br>R21-4880,<br>R351-59,<br>R351-76,<br>R4139438,<br>R49-8130,<br>R63-9410,<br>R66-5400,<br>R66172,<br>R75-9190,<br>R750105,<br>R92-6280   | Milsco Seat XB200 - Grey             | 1       |                |
| <i>Tech Note: This seat will not accept seat belts:</i> |                     |  |                                      |         |                |
| 36  | <b>R120-5179</b>    |  | Large Seat Cover - Gray              | 1       |                |
| 38  | <b>R32144-10</b>    | R32140-81,<br>R32144-3,<br>R34-140-AMVD  | Bolt - 1/4-20 x 3/4 Serrated Hx Wshr | 2       |                |

All original equipment manufacturers names and part numbers are used for identification purposes only, and we are in no way implying that our products are original equipment parts. Prices subject to change without notice.



# Replaces R&R Products Greens Max

## 2200LP Parts

*Traction Unit  
Seat & Battery*



| Item No | R&R Part No.     | OEM Part No.                       | Description           | Qty Req | Order Quantity |
|---------|------------------|------------------------------------|-----------------------|---------|----------------|
| 39      | <b>R445795</b>   | R30-4020,<br>R32128-25,<br>R444794 | Nut - 5/16-18 Flanged | 4       |                |
| 40      | <b>R105-0483</b> |                                    | Rod - Pivot - Seat    | 1       |                |
| 41      | <b>R32121-73</b> | R29-56-D,<br>R32121-7,<br>R95462   | Pin - Roll            | 1       |                |

All original equipment manufacturers names and part numbers are used for identification purposes only, and we are in no way implying that our products are original equipment parts. Prices subject to change without notice.