

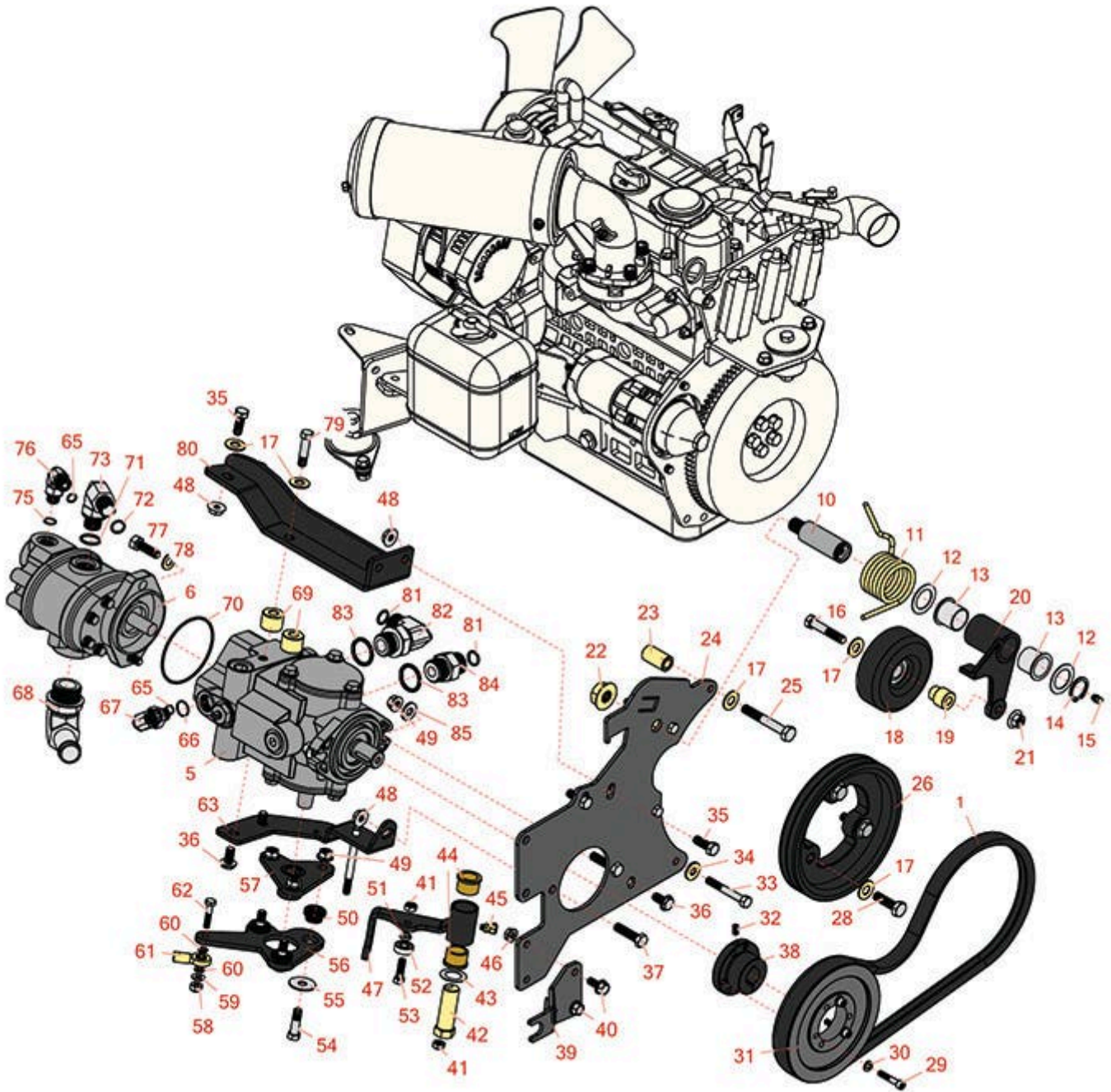


Replaces R&R Products Reel Max 331LP

Parts

Traction Unit

Hydrostat Neutral Arm



All original equipment manufacturers names and part numbers are used for identification purposes only, and we are in no way implying that our products are original equipment parts. Prices subject to change without notice.



Replaces R&R Products Reel Max 331LP

Parts

Traction Unit

Hydrostat Neutral Arm



Item No	R&R Part No.	OEM Part No.	Description	Qty Req	Order Quantity
Belts					
1	R150512	R95-8730	Belt - Hydrastat	1	
Gauges and Controls					
5	R104-4890	R104-4832	Pump - Piston	1	
6	R95-8601		Pump - Gear	1	
Other Parts Available					
10	R99-3529		Shaft - Pivot - Idler	1	
11	R95-8917		Spring - Torsion	1	
12	R74-1810		Washer	2	
13	R99-3631		Bushing - Flanged	2	
14	R458039	R32151-36	Ring - Retaining	1	
15	R302-5	R173-0, R21-6010, R255825, R302-37, R302-47, R302-57, R302-58, R302-6, R31-0300, R32-9660, R471214, R471223, R471226, R60-0800, R62-3880, R92-4181, RJD7797, RJD7842, RJD7844, RM0004	Fitting - Grease	1	

All original equipment manufacturers names and part numbers are used for identification purposes only, and we are in no way implying that our products are original equipment parts. Prices subject to change without notice.



Replaces R&R Products Reel Max 331LP

Parts

Traction Unit

Hydrostat Neutral Arm



Item No	R&R Part No.	OEM Part No.	Description	Qty Req	Order Quantity
16	R323-10	R01-150-0680, R01-178-0616, R100-6663, R100-8320, R1489, R20-51-AD, R20-51-AGD, R3224-6, R323-35, R908336, REP-300-ZB	Bolt - Hex HD 3/8-16 x 2	1	
17	R80-6990		Washer - Hardened	9	
18	R95-8802		Pulley- Idler	1	
19	R95-8806		Spacer	1	
20	R99-3623-03		Arm - Idler	1	
21	R32128-21	32128-21	Locknut - Flanged 3/8-16 Whiz Top Lock	1	
22	R104-8300	R119-4041	Locknut - 5/16-18 Flanged Y/Zinc	1	
23	R95-8736		Spacer	1	
24	R95-8933-03	R95-8933	Plate - Mount - Pump	1	
25	R42-9370		Bolt - Hex HD 10mm x 70mm	1	
26	R99-3412-03	R99-3412	Pulley	1	
28	R56-2140		Bolt	3	
29	R316797	R321-13	Bolt - 1/4-20 x 1-1/4	3	
30	R3253-3	446130, R01-166-0070, R01-166-0410, R23-9-GD, R24-7150, R352-167, R446128, R446130	Washer - Lock 1/4	3	

All original equipment manufacturers names and part numbers are used for identification purposes only, and we are in no way implying that our products are original equipment parts. Prices subject to change without notice.



Replaces R&R Products Reel Max 331LP

Parts

Traction Unit

Hydrostat Neutral Arm



Item No	R&R Part No.	OEM Part No.	Description	Qty Req	Order Quantity
31	R93-6841		Pulley	1	
32	R3245-36		Screw - Set - Hx Soc HD	1	
33	R151379	R33114-060, R42-9510	Bolt - Hx HD 8-1.25 x 65mm	1	
34	R87-8640	R87-7510	Washer - Flat	1	
35	R3234-11		Bolt - Hex Washer HD	4	
36	R3234-1		Bolt - Flanged Serrated Hex HD 3/8-16 x 3/4	3	
37	R400264	323-7, R01-150-0180, R01-178-0610, R19H1732, R20-48-AD, R20-48-AGD, R32-9160, R3224-3, R323-29, R323-7, R400264, R908035P	Bolt - Hex HD 3/8-16 x 1-1/4	2	
38	R93-6842		Bushing - Taper Lock 7/8	1	
39	R104-0464-03	R99-3553, R99-3553-03	Bracket - Support	1	
40	R3234-5	R62-3310	Bolt - 5/16-18x3/4 Hx Ser Was HD	2	
41	R3296-29	3296-29, R1-804256, R915662P	Locknut - 5/16-18 ESNA	2	
42	R76-8640		Stud - Traction	1	
43	R3-6498	R47-8270	Washer - Thrust	1	
44	R256-113		Bushing - 3/4 ID x 1 1/8 Flange	2	
45	R302-60		Zerk - Grease 90 Deg.	1	

All original equipment manufacturers names and part numbers are used for identification purposes only, and we are in no way implying that our products are original equipment parts. Prices subject to change without notice.



Replaces R&R Products Reel Max 331LP

Parts

Traction Unit

Hydrostat Neutral Arm



Item No	R&R Part No.	OEM Part No.	Description	Qty Req	Order Quantity
46	R32128-44		Nut	2	
47	R104-0422		Neutral Arm Assy	1	
48	R32128-43	R30-8990, R3290-357	Nut - Flanged Whiz - 3/8-16	5	
49	R3296-39	3296-39, R32127-25, R32128-36, R3296-17, R3296-22, R915663P, R99-7443	Locknut - 3/8-16 Nylon	5	
50	R63-9750	R64-9750	Mount - Rubber	3	
51	R100-4817		Spacer - Bearing	1	
52	R251-259	R251-307	Bearing - Ball	1	
53	R3274-104		Bolt - Hx Soc Button HD	1	
54	R150776	R95-3857	Bolt - Button HD Soc CS 3/8-16 x 1-1/2	3	
55	R2844		Washer	3	
56	R99-3594-03		Lever - Pump	1	
57	R99-3598-03	R120-5566	Hub Assy	1	
58	R301504	R32127-24, R32146-17, R3296-16, R3296-42, R915661P, RM40333	Locknut - ESNA 1/4-20	1	
59	R3256-22	R09061, R24-9-BD, R3-1032, R93-0954, R93-0989	Washer - Flat 1/4 Yellow	1	

All original equipment manufacturers names and part numbers are used for identification purposes only, and we are in no way implying that our products are original equipment parts. Prices subject to change without notice.



Replaces R&R Products Reel Max 331LP

Parts

Traction Unit

Hydrostat Neutral Arm



Item No	R&R Part No.	OEM Part No.	Description	Qty Req	Order Quantity
60	R43-5930	R01-176-0030	Washer - Lock M6	2	
61	R2411-41		Rod End - Ball Joint	1	
62	R400112	R400114	Bolt - Hex HD 1/4-20 x 1-1/4	1	
63	R95-8960-03	R95-8960	Bracket- Neutral	1	
65	R237-22	R107-8844, R232-72, R237-78	O-Ring	2	
66	R237-79		O-Ring	1	
67	R340-18		Hydraulic Fitting	1	
68	R56-9530		Hydraulic Fitting - 90 Deg	1	
69	R99-3440		Spacer	2	
70	R353-949	R60-3520	O-Ring	1	
71	R237-80	R327-80	O-Ring	1	
72	R237-30	R23-6320	O-Ring - Seal	1	
73	R340-105		Hydraulic Fitting	1	
75	R237-42	R31-4160, R339897	O-Ring	1	
76	R340-77	R340-100, R95-7889	Hydraulic Fitting	1	
77	R3274-1		Bolt - 3/8-16 x 1 1/4 Soc HD Cap	2	

All original equipment manufacturers names and part numbers are used for identification purposes only, and we are in no way implying that our products are original equipment parts. Prices subject to change without notice.



Replaces R&R Products Reel Max 331LP

Parts

Traction Unit

Hydrostat Neutral Arm



Item No	R&R Part No.	OEM Part No.	Description	Qty Req	Order Quantity
78	R453011	3256-24, 453011, R01-166-0100, R01-166-0120, R01-166-0270, R01-166-0500, R01-166-0600, R01-166-0620, R132-4593, R237-12, R24-10-AD, R24-11-AD, R24-11-BD, R24-12-AD, R24-12-BD, R30-9310, R32-8190, R3256-24, R3256-3, R3256-36, R3256-4, R47-9950	Washer - Flat 3/8 SAE Y/Zinc	2	
79	R233-19		Bolt - Hx HD 3/8-16 x 1 5/8	2	
80	R151345		Bracket - Hydrostat	1	
81	R237-65		O-Ring	2	
82	R340-139		Hydraulic Fitting - 90 Deg	1	
83	R237-81		O-Ring	2	
84	R340-8		Adapter	1	
85	R100-4852		Washer - Hardened	2	

All original equipment manufacturers names and part numbers are used for identification purposes only, and we are in no way implying that our products are original equipment parts. Prices subject to change without notice.