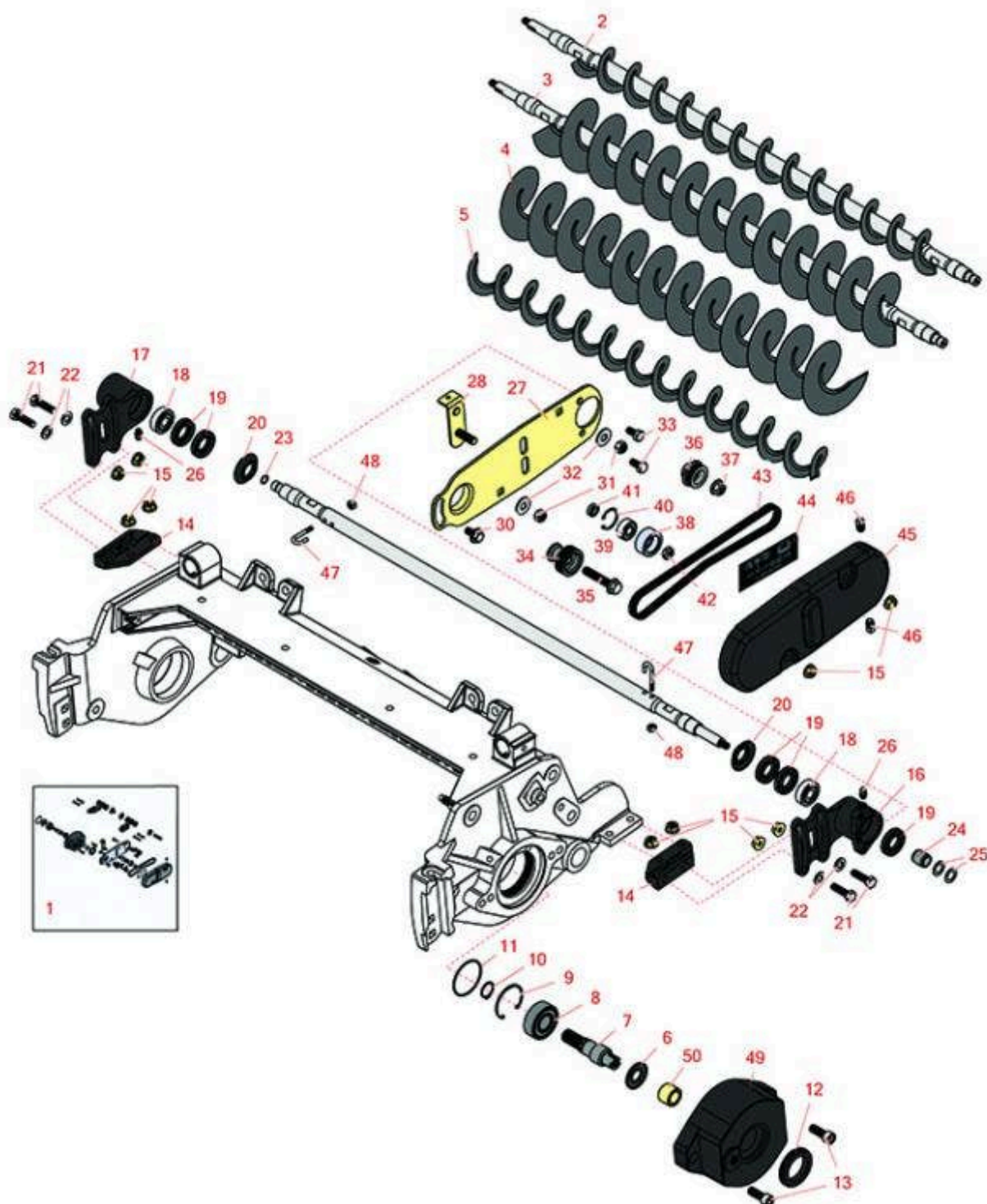




Replaces R&R Products Reel Max 744D

Parts

Cutting Unit
Rear Brush



All original equipment manufacturers names and part numbers are used for identification purposes only, and we are in no way implying that our products are original equipment parts. Prices subject to change without notice.



Replaces R&R Products Reel Max 744D

Parts

Cutting Unit
Rear Brush



| Item No | R&R Part No. | OEM Part No. | Description | Qty Req | Order Quantity |
|---------|--------------|--------------|-------------|---------|----------------|
|---------|--------------|--------------|-------------|---------|----------------|

Complete Roller Brush Kits

| | | | | | |
|---|---------|--|--------------------------------------|---|--|
| 1 | R150907 | | Brush Kit - Rear Roller - Less Brush | 1 | |
|---|---------|--|--------------------------------------|---|--|

Other Parts Available

| | | | | | |
|----|-----------|---|---|----|--|
| 2 | R150915 | R108-4190 | Shaft Assy - Rear Roller Brush - 2 in Keyed | 1 | |
| 3 | R150916 | | Shaft Assy - Rear Roller Brush 3.5 in - Keyed | 1 | |
| 4 | R110-1740 | | Brush-Roller (High HOC) 3.5 in OD | 1 | |
| 5 | R108-4193 | | Brush - Roller - 2 OD | 1 | |
| 6 | R107-7795 | | Seal - Oil | 1 | |
| 7 | R108-4234 | | Shaft - Drive | 1 | |
| 8 | R93-2559 | R204-060, RTCU23201 | Bearing | 1 | |
| 9 | R32120-62 | 32120-62 | Ring - Retaining | 1 | |
| 10 | R458013 | R30-0580, R32120-72, R93-2525, R936125 | Ring - Retaining | 1 | |
| 11 | R112-6967 | | O-Ring | 1 | |
| 12 | R240-7 | | Grommet - Rubber - 2 in OD | 1 | |
| 13 | R3274-7 | | Bolt - Soc HD Cap 3/8-16 x 1 | 2 | |
| 14 | R108-4480 | | Bracket - Rear Roller Brush | 2 | |
| 15 | R104-8300 | R119-4041 | Locknut - 5/16-18 Flanged Y/Zinc | 10 | |
| 16 | R108-4495 | | Bearing Housing Assy - Driven | 1 | |
| 17 | R108-4496 | | Bearing Housing Assy - Non Driven | 1 | |
| 18 | R95-0707 | | Bearing - Self Aligning | 2 | |

All original equipment manufacturers names and part numbers are used for identification purposes only, and we are in no way implying that our products are original equipment parts. Prices subject to change without notice.



Replaces R&R Products Reel Max 744D

Parts

Cutting Unit
Rear Brush



| Item No | R&R Part No. | OEM Part No. | Description | Qty Req | Order Quantity |
|---------|------------------|--|--------------------------------|---------|----------------|
| 19 | R106-8530 | | Seal - Oil | 5 | |
| 20 | R108-4172 | | Seal - Excluder | 2 | |
| 21 | R322-16 | R4-4200 | Bolt - Hex HD 5/16-18 x 1-1/8 | 4 | |
| 22 | R94-6936 | | Washer - Hardened - 5/16 SAE | 4 | |
| 23 | R237-22 | R107-8844, R232-72, R237-78 | O-Ring | 1 | |
| 24 | R108-4491 | | Spacer - Hardened | 1 | |
| 25 | R112-6957 | | Washer - Hardened | 2 | |
| 26 | R302-5 | R173-0, R21-6010, R255825, R302-37, R302-47, R302-57, R302-58, R302-6, R31-0300, R32-9660, R471214, R471223, R471226, R60-0800, R62-3880, R92-4181, RJD7797, RJD7842, RJD7844, RM0004, RZS48114-04 | Fitting - Grease | 2 | |
| 27 | R108-4205 | | Plate Assy - Rear Roller Brush | 1 | |
| 28 | R108-4478 | | Plate - Idler | 1 | |
| 30 | R27-0411 | | Bolt - Shoulder | 1 | |
| 31 | R3296-47 | | Locknut - 5/16-18 Jam Nyloc | 2 | |

All original equipment manufacturers names and part numbers are used for identification purposes only, and we are in no way implying that our products are original equipment parts. Prices subject to change without notice.



Replaces R&R Products Reel Max 744D

Parts

Cutting Unit
Rear Brush



| Item No | R&R Part No. | OEM Part No. | Description | Qty Req | Order Quantity |
|---------|--------------|--|--------------------------------|---------|----------------|
| 32 | R453009 | 3256-3, R01-166-0400, R24-10-BD, R24-9-AD, R24H1136, R32-9650, R3256-2, R3256-23, R3256-67, R3290-217, R3556-3, R4-2390, R452006, R7-0152 | Washer - Flat 5/16 SAE | 2 | |
| 33 | R322-2 | R513338P | Bolt - Hex HD 5/16-18 x 5/8 | 2 | |
| 34 | R110-1742 | | Pulley - Driver | 1 | |
| 35 | R66-9302 | R3234-20 | Screw - HHF, Whiz | 1 | |
| 36 | R110-1743 | | Pulley - Driven - Keyed | 1 | |
| 37 | R104-8301 | R109-6658, R133-7570 | Locknut - 3/8-16 Nylon Flanged | 1 | |
| 38 | R110-1745 | | Bearing Assy - Idler | 1 | |
| 39 | R110-1701 | | Bearing | 1 | |
| 40 | R32151-60 | | Ring - Snap | 1 | |
| 41 | R93-3658 | | Spacer - Hardened | 1 | |
| 42 | R3296-59 | | Locknut - 3/8-16 Nylon Jam | 1 | |
| 43 | R110-1747 | | Belt - Rear Brush - 7 in | 1 | |
| 44 | R110-1734 | | Decal-Belt Tension | 1 | |
| 45 | R112-6952 | | Cover - Belt | 1 | |
| 46 | R285-17 | R285-10 | Plug - 1/8 NPT | 2 | |

All original equipment manufacturers names and part numbers are used for identification purposes only, and we are in no way implying that our products are original equipment parts. Prices subject to change without notice.



Replaces R&R Products Reel Max 744D Parts

*Cutting Unit
Rear Brush*



| Item No | R&R Part No. | OEM Part No. | Description | Qty Req | Order Quantity |
|---------|--------------|------------------------|----------------------|---------|----------------|
| 47 | R105-9632 | | Bolt - J | 2 | |
| 48 | R3296-2 | R32127-10, R9157404 | Nut - #10 Lock | 2 | |
| 49 | R108-4201 | | Bearing Housing Assy | 1 | |
| 50 | R108-4477 | | Spacer | 1 | |

All original equipment manufacturers names and part numbers are used for identification purposes only, and we are in no way implying that our products are original equipment parts. Prices subject to change without notice.