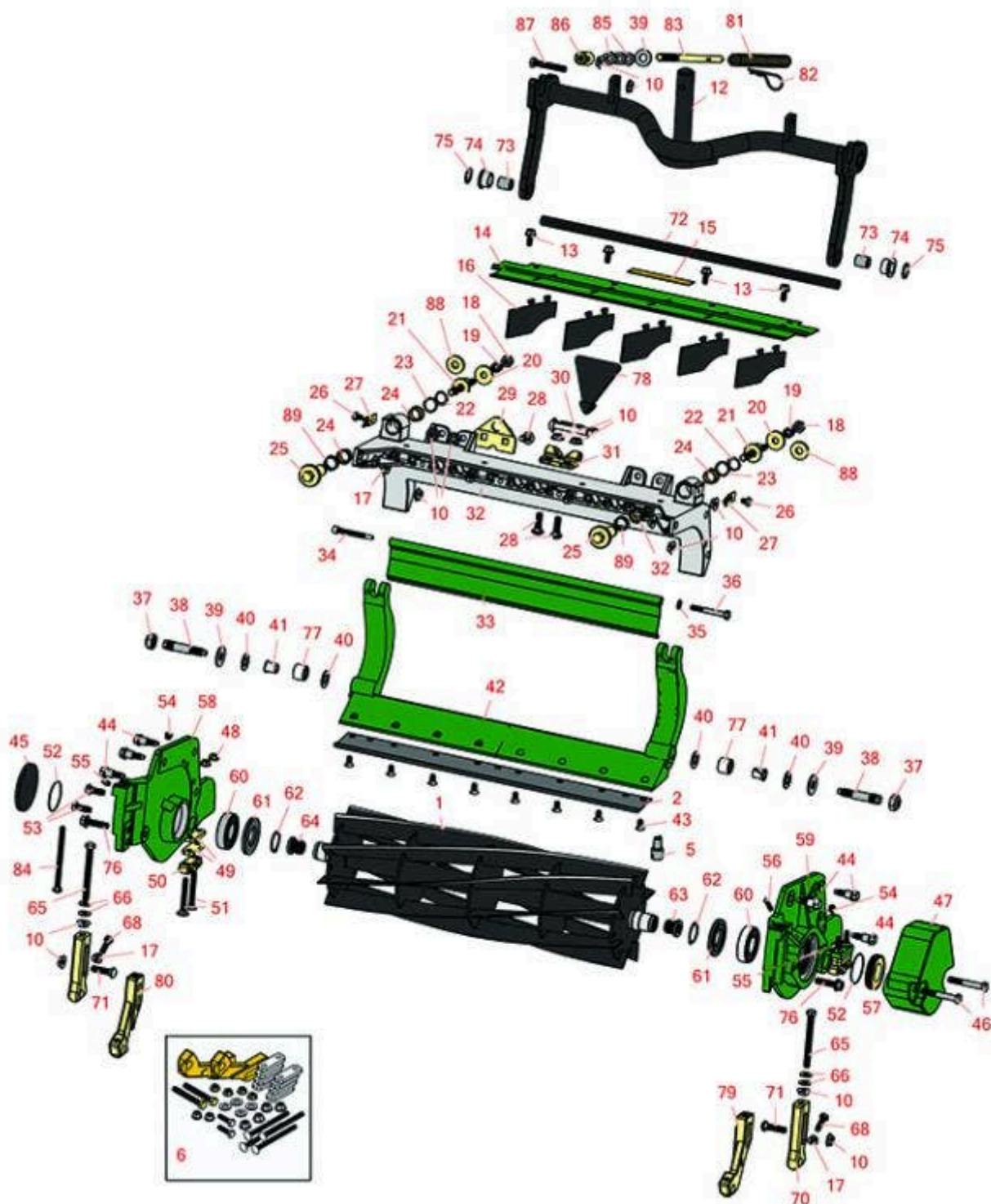




# Replaces R&R Products Reel Max 744D

## Parts

Cutting Unit  
Reel & Bedknife



All original equipment manufacturers names and part numbers are used for identification purposes only, and we are in no way implying that our products are original equipment parts. Prices subject to change without notice.



# Replaces R&R Products Reel Max 744D

## Parts

Cutting Unit  
Reel & Bedknife



Item No	R&R Part No.	OEM Part No.	Description	Qty Req	Order Quantity
---------	--------------	--------------	-------------	---------	----------------

### R&R Reels, Lifetime Guaranteed

1	<b>R108-9073</b>		Reel - 8 Blade 22x7	1	
---	------------------	--	---------------------	---	--

*Detail Description: R&R Reel blades are manufactured from high carbon-boron alloy steel and then hardened to RC46-49 to match the temper of our bedknives and original equipment bedknives. All R&R Reels are cylindrically ground on bearing surfaces and then relief ground. Reels are then precision computer balanced for extended bearing and reel life. R&R Products Reels are guaranteed against defects in material and workmanship for the life of the reel under normal use.:*

1	<b>R108-9074</b>		Reel - 11 Blade 22x7	1	
---	------------------	--	----------------------	---	--

*Detail Description: R&R Reel blades are manufactured from high carbon-boron alloy steel and then hardened to RC46-49 to match the temper of our bedknives and original equipment bedknives. All R&R Reels are cylindrically ground on bearing surfaces and then relief ground. Reels are then precision computer balanced for extended bearing and reel life. R&R Products Reels are guaranteed against defects in material and workmanship for the life of the reel under normal use.:*

1	<b>R107-3264</b>		Reel - 8 Blade 22x7	1	
---	------------------	--	---------------------	---	--

*Detail Description: R&R Reel blades are manufactured from high carbon-boron alloy steel and then hardened to RC46-49 to match the temper of our bedknives and original equipment bedknives. All R&R Reels are cylindrically ground on bearing surfaces and then relief ground. Reels are then precision computer balanced for extended bearing and reel life. R&R Products Reels are guaranteed against defects in material and workmanship for the life of the reel under normal use.:*

1	<b>R117-0980</b>		Reel - 11 Blade 22x7	1	
---	------------------	--	----------------------	---	--

*Detail Description: R&R Reel blades are manufactured from high carbon-boron alloy steel and then hardened to RC46-49 to match the temper of our bedknives and original equipment bedknives. All R&R Reels are cylindrically ground on bearing surfaces and then relief ground. Reels are then precision computer balanced for extended bearing and reel life. R&R Products Reels are guaranteed against defects in material and workmanship for the life of the reel under normal use.:*

### R&R Bedknives, Lifetime Guaranteed

2	<b>R108-9096</b>		Bedknife - Standard	1	
---	------------------	--	---------------------	---	--

All original equipment manufacturers names and part numbers are used for identification purposes only, and we are in no way implying that our products are original equipment parts. Prices subject to change without notice.



# Replaces R&R Products Reel Max 744D

## Parts

Cutting Unit  
Reel & Bedknife



Item No	R&R Part No.	OEM Part No.	Description	Qty Req	Order Quantity
---------	--------------	--------------	-------------	---------	----------------

*Detail Description:* R&R Bedknives are manufactured from high carbon-boron alloy steel and then hardened to RC46-49 to match the temper of our reel blades and original equipment reels. Bedknives are surface ground on the top and front edge and straightened three times before being packaged with oil for rust prevention. All R&R Bedknives now have an increased front edge grind for added life. All R&R Bedknives are guaranteed against defects in material and workmanship under normal use for the life of the part.:

2	<b>R110-4084</b>		Bedknife - Low Cut	1	
---	------------------	--	--------------------	---	--

*Detail Description:* R&R Bedknives are manufactured from high carbon-boron alloy steel and then hardened to RC46-49 to match the temper of our reel blades and original equipment reels. Bedknives are surface ground on the top and front edge and straightened three times before being packaged with oil for rust prevention. All R&R Bedknives now have an increased front edge grind for added life. All R&R Bedknives are guaranteed against defects in material and workmanship under normal use for the life of the part.:

2	<b>R110-4074</b>		Bedknife - High Cut	1	
---	------------------	--	---------------------	---	--

*Detail Description:* R&R Bedknives are manufactured from high carbon-boron alloy steel and then hardened to RC46-49 to match the temper of our reel blades and original equipment reels. Bedknives are surface ground on the top and front edge and straightened three times before being packaged with oil for rust prevention. All R&R Bedknives now have an increased front edge grind for added life. All R&R Bedknives are guaranteed against defects in material and workmanship under normal use for the life of the part.:

### R&R Razor Tool Steel Bedknives, Lifetime Guaranteed

2	<b>R108-9095</b>	R137-0833	Bedknife - Razor Tool Steel - 22 High Cut	1	
---	------------------	-----------	---	---	--

*Detail Description:* R&R Razor bedknives are manufactured from premium alloy tool steel steel and then hardened to RC48-51 to match the temper of our Razor reel blades and original equipment premium series reels. Bedknives are surface ground on the top and front edge and specially packaged for rust prevention. All R&R Bedknives now have an increased front edge grind for added life. All R&R Bedknives are guaranteed against defects in material and workmanship under normal use for the life of the part. You can expect up to double the life over standard bedknives.:

### Overhaul Kits & Service Tools

5	<b>R110-9600</b>		High HOC Kit	0	
---	------------------	--	--------------	---	--

*Detail Description:* Includes 1 ea.: R120-0404, R120-0405 & 2 ea: R112-7451, R322-16, R445722 & 4 ea.: R106-9758, R104-8300, R453011, R104-8301 & 8 ea: R106-3925:

6	<b>R51-0880</b>		Bedknife Screw Driver Tool	0	
---	-----------------	--	----------------------------	---	--

All original equipment manufacturers names and part numbers are used for identification purposes only, and we are in no way implying that our products are original equipment parts. Prices subject to change without notice.



# Replaces R&R Products Reel Max 744D

## Parts

Cutting Unit  
Reel & Bedknife



Item No	R&R Part No.	OEM Part No.	Description	Qty Req	Order Quantity
---------	--------------	--------------	-------------	---------	----------------

*Detail Description: Easily install and remove bed knife screws with the help of a ratchet with 3/8" drive. Tool manufactured with hardened alloy steel.:*

### Other Parts Available

10	R32128-43	R30-8990, R3290-357	Nut - Flanged Whiz - 3/8-16	7	
12	R107-7433		Carrier Frame Assy	1	
13	R3234-5	R62-3310	Bolt - 5/16-18x3/4 Hx Ser Was HD	4	
14	R107-2996G		Grass Shield - Front - Green	1	
15	R93-6688		Decal - Warning	1	
16	R110-1706		Deflector	5	
17	R445722	R30-8980, R32128-2, R32128-20	Nut - Serrated Washer	4	
18	R33025-00		Locknut - 10mm x 1.5 Jam	2	
19	R99-3755		Spring - Bed Bar Adjusting	2	
20	R99-2098		Washer - Bed Bar Adjuster	2	
21	R99-2096		Screw - Bed Bar Adjustment - M10 Thrd 1 End	2	
22	R32120-93		Snap Ring - HD	2	
23	R106-5335		Wave Washer - Reel Adjusting	2	
24	R106-5344		Bushing - Flanged and Keyed	4	
25	R106-5363		Shaft - Adjusting - Bed Bar - Stainless	2	
26	R114-9396	R119-4067	Bolt - Hex HD 5/16-18 x 3/8	2	

All original equipment manufacturers names and part numbers are used for identification purposes only, and we are in no way implying that our products are original equipment parts. Prices subject to change without notice.



# Replaces R&R Products Reel Max 744D

## Parts

Cutting Unit  
Reel & Bedknife



Item No	R&R Part No.	OEM Part No.	Description	Qty Req	Order Quantity
27	R99-2097		Detent - Bed Bar Adjuster	2	
28	R3231-25	R01-173-0610, R30-9970, R3231-3, R900064P	Bolt - Carriage 3/8-16 x 1-1/4	4	
29	R110-4069		Bracket	1	
30	R107-7400		Pin - Lynch	1	
31	R110-4058		Bracket - Chain	1	
32	R107-3258		Frame	1	
33	R107-7779G		Grass Shield Assy - Rear - Green	1	
34	R107-7773		Bolt - Soc HD Cap 5/16-18 x 2-1/2	1	
35	R3256-74		Washer - Flat	1	
36	R322-14	R01-150-0830, R01-178-0524, R30-8900	Bolt - Hex HD 5/16-18 x 3 GR5	1	
37	R3296-33	R444820, R445801	Locknut - 5/8-18 ESNA Jam	2	
38	R106-9623		Bolt - Bedbar	2	
39	R453017	3256-26, R01-166-0050, R01-166-0240, R01-166-0800, R24-13-AD, R24-14-AD, R32-8110, R3256-6, R452012, R69-8980	Washer - Flat 1/2	2	
40	R61-1950		Washer - Nylon - Bed Bar	4	

All original equipment manufacturers names and part numbers are used for identification purposes only, and we are in no way implying that our products are original equipment parts. Prices subject to change without notice.



# Replaces R&R Products Reel Max 744D

## Parts

Cutting Unit  
Reel & Bedknife



Item No	R&R Part No.	OEM Part No.	Description	Qty Req	Order Quantity
41	R56-9520		Bushing - Nyliner	2	
42	R150904		Bed Bar - Fits R&R Units Only	1	
43	R150476	R170476, R3-3816, R52-4910, R57-4910	Screw - Bedknife 5/16-18 x 5/8	8	
44	R107-2979		Bolt - Shoulder	6	
45	R94-2703		Plug - Plastic Spindle Housing	1	
46	R101526	321-11, R01-150-0970, R01-178-0620, R20-53-AGD, R3224-8, R323-12, R323-31, R323-47	Bolt - Hex HD 3/8-16 x 2-1/2 GR5	2	
47	R108-4269G		Weight - Green	1	
48	R104-8300	R119-4041	Locknut - 5/16-18 Flanged Y/Zinc	4	
49	R106-3925		Shim - 1/4 - Rear Roller HOC	4	
50	R106-3924		Bracket - Rear Roller	2	
51	RP17609-2	R441672	Bolt - Carriage 5/16-18 x 1-1/2	4	
52	R112-6967		O-Ring	2	
53	R323-6	323-6, R01-150-0010, R01-178-0608, R20-47-AD, R20-47-AGD, R3224-2, R49-3510, R908034P, R908332	Bolt - Hex HD 3/8-16 x 1 GR5 YZ	2	

All original equipment manufacturers names and part numbers are used for identification purposes only, and we are in no way implying that our products are original equipment parts. Prices subject to change without notice.



# Replaces R&R Products Reel Max 744D

## Parts

Cutting Unit  
Reel & Bedknife



Item No	R&R Part No.	OEM Part No.	Description	Qty Req	Order Quantity
54	R170714	E14814, R302-34, R302-39, R471240, R471242, R62-3520, RE14814, RZS48677	Fitting - Pressure Relief	2	
55	R302-5	R173-0, R21-6010, R255825, R302-37, R302-47, R302-57, R302-58, R302-6, R31-0300, R32-9660, R471214, R471223, R471226, R60-0800, R62-3880, R92-4181, RJD7797, RJD7842, RJD7844, RM0004, RZS48114-04	Fitting - Grease	2	
56	R107-7447		Set Screw - 1/4 x 1-1/4 Sq HD	1	
57	R107-2954		Nut - Bearing Adjuster	1	
58	R150903		Side Plate - RH - Fits R&R Units Only	1	
59	R150902		Side Plate - LH - Fits R&R Units Only	1	
60	R93-2489		Bearing - Reel	2	
61	R107-4028	R105-6757	Seal - Grease	2	
62	R92-2601		Snap Ring	2	

All original equipment manufacturers names and part numbers are used for identification purposes only, and we are in no way implying that our products are original equipment parts. Prices subject to change without notice.



# Replaces R&R Products Reel Max 744D

## Parts

Cutting Unit  
Reel & Bedknife



Item No	R&R Part No.	OEM Part No.	Description	Qty Req	Order Quantity
63	R107-3276		Insert - Threaded - LH - 9 Tooth	1	
64	R107-3275		Insert - Threaded - RH - 9 Tooth	1	
65	R107-4026		Bolt - Hex Tap 3/8-16 x 3-3/4	2	
66	R453011	3256-24, 453011, R01-166-0100, R01-166-0120, R01-166-0270, R01-166-0500, R01-166-0600, R01-166-0620, R132-4593, R237-12, R24-10-AD, R24-11-AD, R24-11-BD, R24-12-AD, R24-12-BD, R30-9310, R32-8190, R3256-24, R3256-3, R3256-36, R3256-4, R47-9950	Washer - Flat 3/8 SAE Y/Zinc	4	
68	R322-16	R4-4200	Bolt - Hex HD 5/16-18 x 1-1/8	2	
70	R107-2952		Bracket - Front Roller	2	
71	R3231-4	R01-157-0440, R01-173-0612	Bolt - Carriage 3/8-16 x 1-1/2	2	
72	R108-4284		Shaft - Support	1	
73	R108-4279		Spacer - Frame	2	
74	R93-2877		Bushing - Flanged	2	
75	R67-9410		Washer - Clevis Pin	1	
76	R3234-19		Bolt - Hex Washer 3/8-16x1-3/4	2	

All original equipment manufacturers names and part numbers are used for identification purposes only, and we are in no way implying that our products are original equipment parts. Prices subject to change without notice.





# Replaces R&R Products Reel Max 744D

## Parts

*Cutting Unit  
Reel & Bedknife*



Item No	R&R Part No.	OEM Part No.	Description	Qty Req	Order Quantity
77	R106-9618		Bushing - Rubber	2	
78	R110-4088-03	R119-8010-03	Kickstand	1	
79	R108-4213		Bracket- HOC - LH - Groomer	1	
80	R108-4214		Bracket-HOC - RH - Groomer	1	
81	R110-4079		Spring	1	
82	R92-2762		Pin - Snap	1	
83	R115-2007	R107-7437	Rod - Spring	1	
84	R106-9758		Bolt - Carriage 5/16x4	2	
85	R443818	R01-191-0813, R3218-18, R3218-5	Nut - 1/2-13 Hex Jam Zinc	3	
86	R99-8662		Tube - Spring	1	
87	R104-3396		Bolt - Hex HD 3/8-16 x 2-1/4	1	
88	R119-4155		Washer - Hardened	2	
89	R120-5116		Washer - Wave	2	

All original equipment manufacturers names and part numbers are used for identification purposes only, and we are in no way implying that our products are original equipment parts. Prices subject to change without notice.