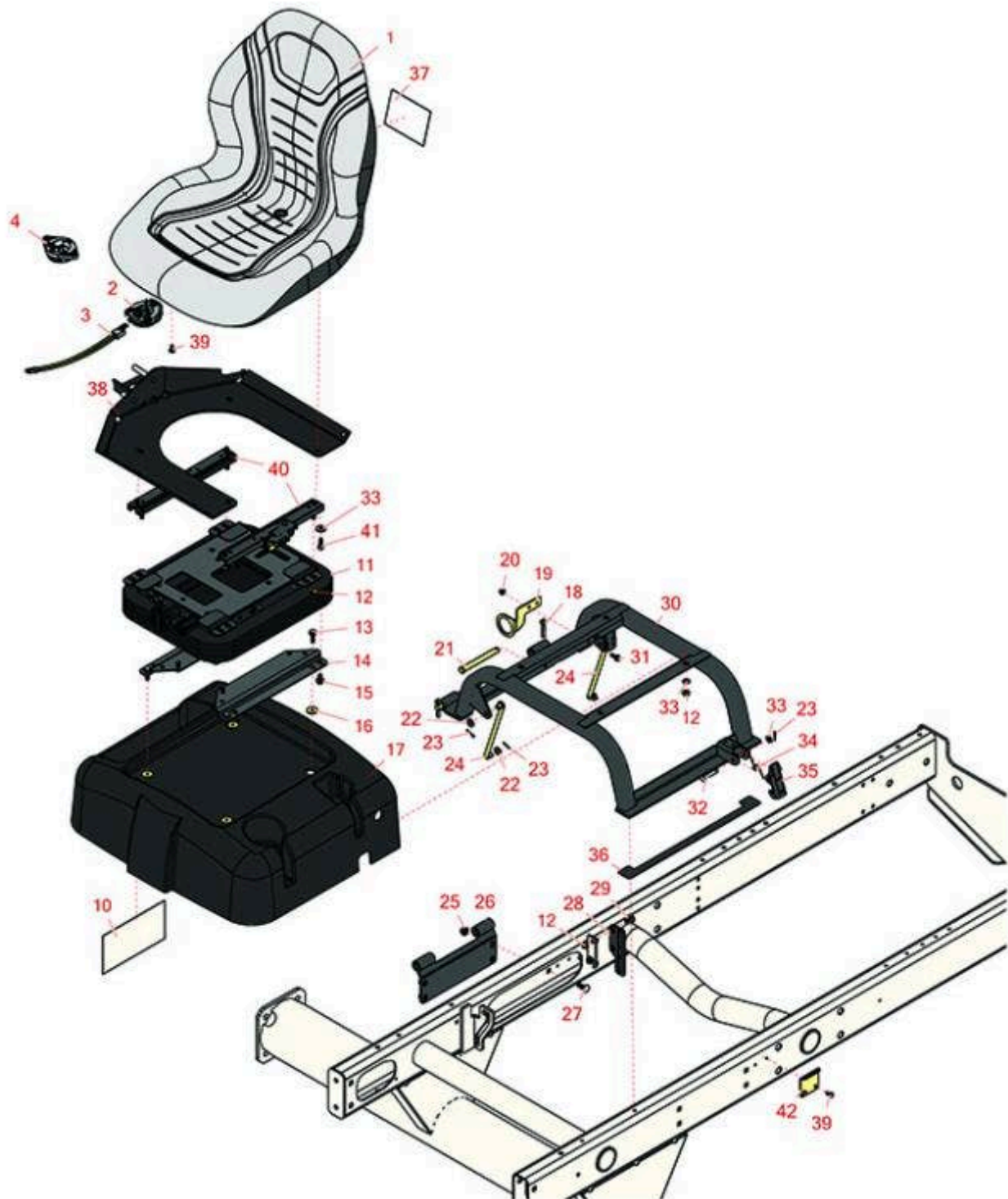




Replaces R&R Products Reel Max 744D

Parts

*Traction Unit
Seat Base*



All original equipment manufacturers names and part numbers are used for identification purposes only, and we are in no way implying that our products are original equipment parts. Prices subject to change without notice.



Replaces R&R Products Reel Max 744D

Parts

Traction Unit
Seat Base



Item No	R&R Part No.	OEM Part No.	Description	Qty Req	Order Quantity
1	RMXB200GY	R100-3187, R1001774, R104-4620, R21-4880, R351-59, R351-76, R4139438, R49-8130, R63-9410, R66-5400, R66172, R75-9190, R750105, R92-6280	Milsco Seat XB200 - Grey	1	

Tech Note: This seat will not accept seat belts:

*Detail Description: The Milsco XB200 high back seat features a comfortable vacuum formed, waterproof vinyl cover with central drain hole. Ergonomic foam cushion provides operator comfort. Cover will not crack or peel. Rugged blow-molded plastic frame construction. Allows for Twist-in operator presence switch. Seat: 19in W x 24in D x 21in H. Multiple pre-drilled mounting patterns. Grey. Made in U.S.A.
Please note: Due to excessive air freight charges, this item will be shipped ground freight.:*

1	R120-5179		Large Seat Cover - Gray	1	
---	------------------	--	-------------------------	---	--

Gauges and Controls

2	R151541		Delta Seat Switch - Twist Mount 1 Pole Normally Open	1	
3	R108-8657		Harness-Wire, Seat	1	
4	R92-6282	R554390, RAET10449	Switch - Kill - Seat	1	

Other Parts Available

10	R114-8891	R110-0996	Decal- Reel Speed	1	
11	R110-8851		Mechanical Suspension - Seat	1	
12	R104-8300	R119-4041	Locknut - 5/16-18 Flanged Y/Zinc	10	

All original equipment manufacturers names and part numbers are used for identification purposes only, and we are in no way implying that our products are original equipment parts. Prices subject to change without notice.



Replaces R&R Products Reel Max 744D

Parts

*Traction Unit
Seat Base*



Item No	R&R Part No.	OEM Part No.	Description	Qty Req	Order Quantity
13	R3234-29		Bolt - 5/16-18x1 Serr Hex	4	
14	R108-6590-03		Seat Bracket - Lower	2	
15	R33114-016	R19M7162, R42-9230, R42-9270, R48-7690, R48-7700	Bolt - Hx HD 8mm x 1.25 x 15	4	
16	R366653	R71-9310	Spacer	4	
17	R108-1757		Cover-Seat Base	1	
18	R3272-11	R01-151-0010, R01-151-0040, R28-18-D, R28-28-D, R3211-72	Pin - Cotter	2	
19	R150937		Bracket - Wiring Harness	1	
20	R104-7201	104-7201	Locknut - 1/4-20 ESNA Flanged	2	
21	R283-83	283-83, R42194, R93-5343	Pin - Clevis	2	

All original equipment manufacturers names and part numbers are used for identification purposes only, and we are in no way implying that our products are original equipment parts. Prices subject to change without notice.



Replaces R&R Products Reel Max 744D

Parts

Traction Unit
Seat Base



Item No	R&R Part No.	OEM Part No.	Description	Qty Req	Order Quantity
22	R453011	3256-24, 453011, R01-166-0100, R01-166-0120, R01-166-0270, R01-166-0500, R01-166-0600, R01-166-0620, R132-4593, R237-12, R24-10-AD, R24-11-AD, R24-11-BD, R24-12-AD, R24-12-BD, R30-9310, R32-8190, R3256-24, R3256-3, R3256-36, R3256-4, R47-9950	Washer - Flat 3/8 SAE Y/Zinc	4	
23	R1023-4	R01-151-0150, R19-6220, R214-14, R215-54, R28-9-D, R3272-4, R3272-6, R460014, R513567, R932008P, RZS04061-02	Pin - Cotter 3/32 x 3/4	5	
24	R98-0917		Rod-Prop	2	
25	R104-8301	R109-6658, R133-7570	Locknut - 3/8-16 Nylon Flanged	4	
26	R108-7582-03		Pivot Plate Assy	1	
27	R3231-2	R01-157-0170, R01-173-0608, R900063P	Bolt - Carriage 3/8-16 x 1	4	

All original equipment manufacturers names and part numbers are used for identification purposes only, and we are in no way implying that our products are original equipment parts. Prices subject to change without notice.



Replaces R&R Products Reel Max 744D

Parts

*Traction Unit
Seat Base*



Item No	R&R Part No.	OEM Part No.	Description	Qty Req	Order Quantity
28	R108-7584B		Plate-Guide - Rod - Black	1	
29	R3230-1	R01-173-0506, R3230-20, R900037P	Bolt - Carriage 5/16-18 x 3/4	2	
30	R108-7577-03		Seat Base Assy	1	
31	R49-2040	R32104-42, R32104-95, R32144-44	Bolt - Hex Washer 1/4-20 x 3/4	2	
32	R94-3829		Pin - Clevis	1	
33	R453009	3256-3, R01-166-0400, R24-10-BD, R24-9-AD, R24H1136, R32-9650, R3256-2, R3256-23, R3256-67, R3290-217, R3556-3, R4-2390, R452006, R7-0152	Washer - Flat 5/16 SAE	1	
34	R104-4821		Spring - Torsion - Seat Base	1	
35	R110-8971		Latch	1	
36	R110-5255		Bumper - Base - Seat	2	
37	R110-0990		Decal- Service	1	
38	R108-7591-03		Mount-Seat	1	
39	R12-3270	R30-0700, R32104-17, R8-3880, R9266714	Bolt - Hex Washer 1/4-20 x 1/2	4	

All original equipment manufacturers names and part numbers are used for identification purposes only, and we are in no way implying that our products are original equipment parts. Prices subject to change without notice.



Replaces R&R Products Reel Max 744D

Parts

Traction Unit
Seat Base



Item No	R&R Part No.	OEM Part No.	Description	Qty Req	Order Quantity
40	R150224	R133-8896, R92-8990, R92-8991	Adjusters - Seat (Set of 2)	1	
41	R434024	434024, R3274-12	Bolt - Soc HD Cap 5/16-18 x 3/4	4	
42	R110-8972		Hook-Latch	1	

All original equipment manufacturers names and part numbers are used for identification purposes only, and we are in no way implying that our products are original equipment parts. Prices subject to change without notice.