

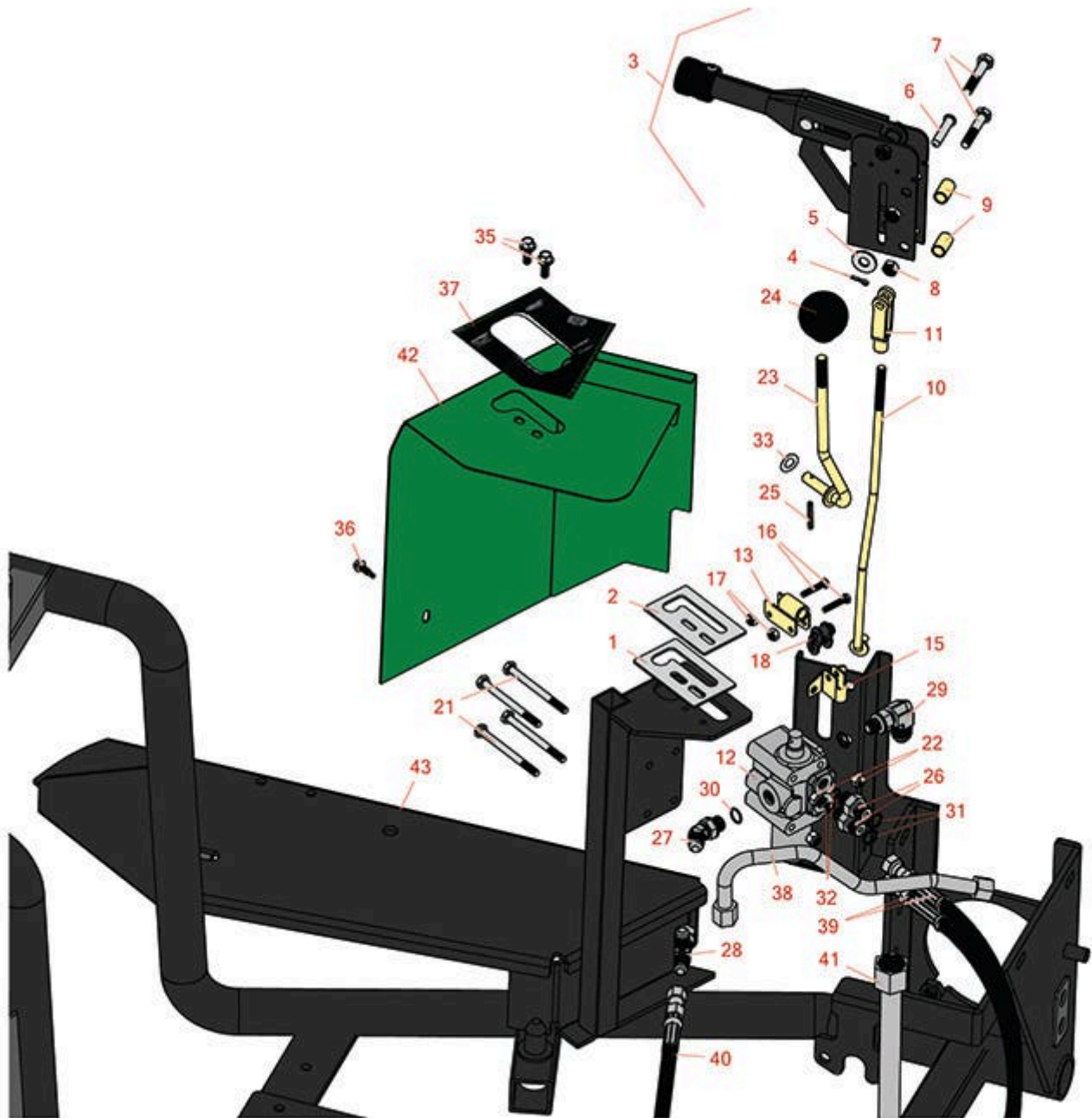


Replaces R&R Products Sand Max 316

Parts

Traction Unit

Hand Brake & Hydraulic Valve



All original equipment manufacturers names and part numbers are used for identification purposes only, and we are in no way implying that our products are original equipment parts. Prices subject to change without notice.



Replaces R&R Products Sand Max 316 Parts

*Traction Unit
Hand Brake & Hydraulic Valve*



| Item No | R&R Part No. | OEM Part No. | Description | Qty Req | Order Quantity |
|---------|--------------|--|-------------------------------|---------|----------------|
| 1 | R21-8640 | | Latch-Lever, Valve | 1 | |
| 2 | R95-5833 | | Guide-Lever | 1 | |
| 3 | R95-0636 | | Lever Assy - Brake | 1 | |
| 4 | R11M7012 | | Pin - Cotter 1/8 x 5/8 | 1 | |
| 5 | R453009 | 3256-3, R01-166-0400, R24-10-BD, R24-9-AD, R24H1136, R32-9650, R3256-2, R3256-23, R3256-67, R3290-217, R3556-3, R4-2390, R452006, R7-0152 | Washer - Flat 5/16 SAE | 1 | |
| 6 | R283-14 | | Pin - Clevis | 1 | |
| 7 | R101344 | R322-8, R400194 | Bolt - Hex HD 5/16-18 x 1-3/4 | 2 | |
| 8 | R3296-29 | 3296-29, R1-804256, R915662P | Locknut - 5/16-18 ESNA | 2 | |
| 9 | R85-0290 | | Spacer | 2 | |
| 10 | R95-0628 | | Rod-Brake | 1 | |
| 11 | R282-2 | R1-303105 | Yoke | 1 | |
| 12 | R43-1710 | R21-8550, R43-1710-01, R43-1730 | Valve Assy | 1 | |
| 13 | R92-8983 | | Pivot | 1 | |

All original equipment manufacturers names and part numbers are used for identification purposes only, and we are in no way implying that our products are original equipment parts. Prices subject to change without notice.



Replaces R&R Products Sand Max 316 Parts

*Traction Unit
Hand Brake & Hydraulic Valve*



| Item No | R&R Part No. | OEM Part No. | Description | Qty Req | Order Quantity |
|---------|------------------|--|--------------------------------------|---------|----------------|
| 15 | R88-8480 | R85-8920 | Bracket-Pivot | 1 | |
| 16 | R3290-360 | | Bolt | 2 | |
| 17 | R3296-2 | R32127-10, R9157404 | Nut - #10 Lock | 2 | |
| 18 | R2710-20 | | Link - Offset | 1 | |
| 21 | R321-23 | | Bolt - Hx HD 1/4-20 x 3 | 4 | |
| 22 | R301504 | R32127-24, R32146-17, R3296-16, R3296-42, R915661P, RM40333 | Locknut - ESNA 1/4-20 | 4 | |
| 23 | R92-8981 | R92-8981-01 | Lift Lever | 1 | |
| 24 | R233-21 | | Knob | 1 | |
| 25 | R32121-73 | R29-56-D, R32121-7, R95462 | Pin - Roll | 1 | |
| 26 | R340-92 | | Hydraulic Fitting - Striaight | 2 | |
| 27 | R353-212 | R30-6430, R353-378 | Hydraulic Fitting - 45 Deg | 1 | |
| 28 | R353-877 | | Hydraulic Fitting - Tee 6MJ-6FJX-6MJ | 1 | |
| 29 | R353-511 | | Hydraulic Fitting - 90 Deg | 1 | |
| 30 | R237-42 | R31-4160, R339897 | O-Ring | 2 | |
| 31 | R237-22 | R107-8844, R232-72, R237-78 | O-Ring | 2 | |
| 32 | R237-21 | | O-Ring | 2 | |

All original equipment manufacturers names and part numbers are used for identification purposes only, and we are in no way implying that our products are original equipment parts. Prices subject to change without notice.



Replaces R&R Products Sand Max 316 Parts

Traction Unit

Hand Brake & Hydraulic Valve



| Item No | R&R Part No. | OEM Part No. | Description | Qty Req | Order Quantity |
|---------|--------------|---------------------------------------|--------------------------------------|---------|----------------|
| 33 | R3290-477 | R108473 | Washer - Spring Wave | 1 | |
| 35 | R3234-33 | | Bolt - 1/4-20 x 3/4 Serr Hex Flanged | 2 | |
| 36 | R32104-76 | R32104-63, R32104-65, R32104-74 | Bolt - Hx HD #12 x 3/4 S.D.Imp | 1 | |
| 37 | R95-0647 | | Decal-Control | 1 | |
| 38 | R95-0575 | | Tube-Valve, Shuttle | 1 | |
| 39 | R75-6200 | | Hydraulic Hose Assy | 2 | |
| 40 | R95-0592 | | Hydraulic Hose Assy | 1 | |
| 41 | R95-0643 | | Tube-Valve to Cool | 1 | |
| 42 | R95-0601G | | Valve Shroud Assy - Green | 1 | |
| 43 | R95-0600B | | Frame - Black | 1 | |

All original equipment manufacturers names and part numbers are used for identification purposes only, and we are in no way implying that our products are original equipment parts. Prices subject to change without notice.