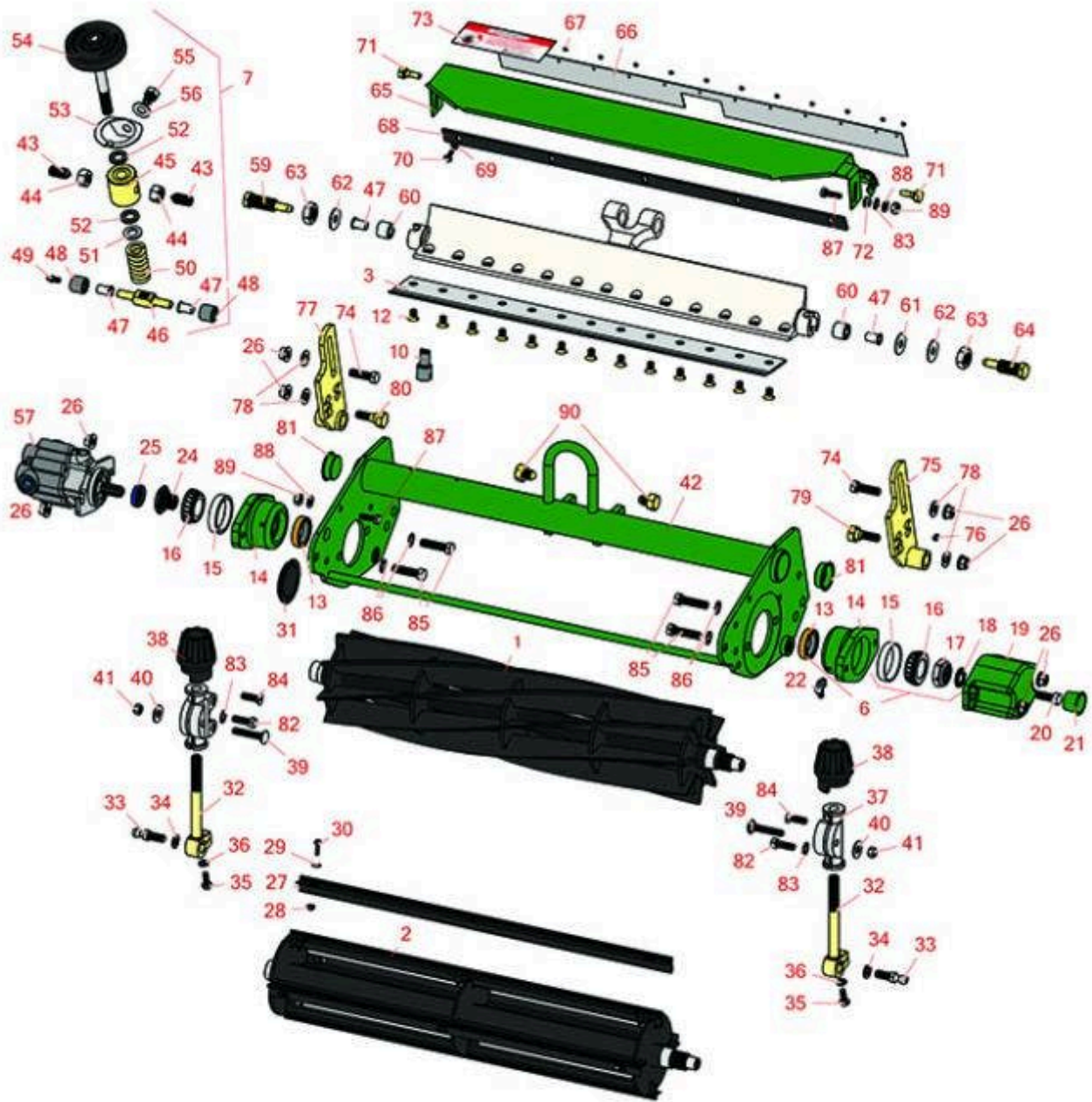




# Replaces R&R Products Versa-Green

## 1860PS Parts

Single Point Cutting Unit  
Reel & Bedknife



All original equipment manufacturers names and part numbers are used for identification purposes only, and we are in no way implying that our products are original equipment parts. Prices subject to change without notice.



# Replaces R&R Products Versa-Green

## 1860PS Parts

Single Point Cutting Unit  
Reel & Bedknife



Item No	R&R Part No.	OEM Part No.	Description	Qty Req	Order Quantity
---------	--------------	--------------	-------------	---------	----------------

### *R&R Reels, Lifetime Guaranteed*

1	<b>R5-3189</b>	R12-3599, R130-6469	Reel - 8 Blade	1	
1	<b>R5-3189H</b>		Reel - 8 Blade Heavy Duty	1	
1	<b>R5-3195</b>		Reel - 9 Blade	1	
1	<b>R5-3200</b>		Reel - 4 Blade	1	
1	<b>R5-3205</b>	R12-0279, R12-0729, R12-8779	Reel - 5 Blade	1	
1	<b>R5-3206</b>		Reel - 6 Blade	1	
1	<b>R5-3215</b>		Reel - 5 Blade Heavy Duty	1	
1	<b>R12-2789</b>	R130-6470	Reel - 11 Blade	1	
2	<b>R150480</b>		Brush Reel	1	

### *R&R Bedknives, Lifetime Guaranteed*

3	<b>R150466</b>	R63-8600, R94-6393	Bedknife - Super Thick .312 - 1.00 HOC	1	
3	<b>R94-6392</b>	R57-4970, R62-2500	Bedknife - High Cut .312 - 1.00 HOC	1	
3	<b>R93-4264</b>	R57-4960, R63-8470	Bedknife - Low Cut .187 - 1.00 HOC	1	
3	<b>R93-4263</b>	R57-4980, R63-8560, R66-9320, R93-6039	Bedknife - Tournament Cut .125 - .500 HOC	1	
3	<b>R93-4262</b>	R62-8250, R65-8250	Bedknife - Micro Cut .062 - .187 HOC	0	

### *R&R Razor Tool Steel Bedknives, Lifetime Guaranteed*

All original equipment manufacturers names and part numbers are used for identification purposes only, and we are in no way implying that our products are original equipment parts. Prices subject to change without notice.



# Replaces R&R Products Versa-Green

## 1860PS Parts

Single Point Cutting Unit  
Reel & Bedknife



Item No	R&R Part No.	OEM Part No.	Description	Qty Req	Order Quantity
---------	--------------	--------------	-------------	---------	----------------

3	<b>R115-1881</b>		Bedknife - Razor Tool Steel - 21 Tournament Cut .125 - .500 HOC	1	
---	------------------	--	--	---	--

*Tech Note: Razor Tool Steel Bedknives are constructed from high grade tool steel for extended life and optimum cut.:*

3	<b>R115-1880</b>		Bedknife - Razor Tool Steel - 21 Micro Cut .062 - .187 HOC	1	
---	------------------	--	---	---	--

*Tech Note: Razor Tool Steel Bedknives are constructed from high grade tool steel for extended life and optimum cut.:*

### Overhaul Kits

5	<b>R13-3659</b>		Overhaul Kit - Cutting Unit	0	
---	-----------------	--	-----------------------------	---	--

*Tech Note: Includes 13 ea.:R150477 Screws; 4 ea.: R52-2890 Bushings; 2 ea.: R237-77 O-rings, R253-96 Seals, R254-72 Bearing Cups, R254-94 Bearings, R52-2900 Washers, R57-5280 Bearings, R62-5510 Bushings, R63-9510 Bushings; 1 ea.: R253-61 Seal & R32127-46 Locknut:*

6	<b>R107-1590</b>		Overhaul Kit - Cutting Unit	0	
---	------------------	--	-----------------------------	---	--

*Tech Note: Includes 2 ea.: R253-96 Seals, R254-72 Bearing Cups, R254-94 Bearings; 1 ea.: R253-61 Seal & R32127-46 Locknut:*

7	<b>R255-311</b>		Kit - Micro Adjusting	0	
---	-----------------	--	-----------------------	---	--

*Tech Note: Includes 2 ea: R443818 Nut, R52-2890 Bushing, R57-5190 Screw, R62-5510 Bushing, R77-0350 Retainer; 1 ea: R187-0 Washer, R257-5 Washer, R52-2990 Bolt, R57-5260 Pivot, R66-7220 Arm, R66-7230 Spring, R77-0300 Handle, R77-0330 Housing:*

8	<b>R255-310</b>		Overhaul Kit - Cutting Unit	0	
---	-----------------	--	-----------------------------	---	--

*Tech Note: Includes 4 ea: R52-2890 Bushings; 2 ea: R237-77 O-Rings, R253-96 Seals, R254-72 Cups, R254-94 Bearings, R52-2900 Washers, R57-5280 Bearings, R62-5510 Bushings, R63-9510 Bushings; 1 ea: R253-61 Seal & R32127-46 Locknut:*

### Service Tools

10	<b>R51-0880</b>		Bedknife Screw Driver Tool	0	
----	-----------------	--	----------------------------	---	--

### Other Parts Available

All original equipment manufacturers names and part numbers are used for identification purposes only, and we are in no way implying that our products are original equipment parts. Prices subject to change without notice.



# Replaces R&R Products Versa-Green

## 1860PS Parts

Single Point Cutting Unit  
Reel & Bedknife



Item No	R&R Part No.	OEM Part No.	Description	Qty Req	Order Quantity
12	R150477	R64249-01, RA119001	Screw - Bedknife 5/16-18 x 1/2	13	
12	R150476	R170476, R3-3816, R52-4910, R57-4910	Screw - Bedknife 5/16-18 x 5/8	13	
13	R253-96		Seal - Oil Single Lip Reel	2	
14	R10-5120G		Housing - Bearing Reel - Green	2	
<i>Tech Note: Includes R253-96, R254-72 &amp; R302-5:</i>					
15	R254-72	R01-103-0050, R01-103-0120, R01-103-0140, R1-543508, R254-71, R313456, R40439, R521744, R62-3340, R814474, R99-4511, RJD8253	Cup - Bearing	2	
16	R254-94	R1-543509, R313089, R32-8090, R32-8240, R32-9640, R40440, R521494, R62-3330, R814473, RJD8933, RTC37582	Tapered Bearing Cone	2	
17	R32127-46	R3296-60	Locknut	1	
18	R253-61		Seal - Oil Reel	1	
19	R10-5080G		Roller End - Cap Reel Brg Housing - Green	1	

All original equipment manufacturers names and part numbers are used for identification purposes only, and we are in no way implying that our products are original equipment parts. Prices subject to change without notice.



# Replaces R&R Products Versa-Green

## 1860PS Parts

Single Point Cutting Unit  
Reel & Bedknife



Item No	R&R Part No.	OEM Part No.	Description	Qty Req	Order Quantity
20	<b>R323-2</b>	R01-178-0604	Bolt - Hex HD 3/8-16 x 1	1	
21	<b>R12-0460</b>		Caplug - End Cap	1	
22	<b>R302-40</b>	R302-13	Fitting - Grease	1	
24	<b>R77-0340</b>		Nut - Splined Reel	1	
25	<b>R353-585</b>	R353-469, R353-587, R354-34, R45401-2, R500843, R72-4380, R75-1210, R75-1270, R92-8863, R92-8864	Seal - High Pressure - Reel Motor	1	
26	<b>R3296-39</b>	3296-39, R32127-25, R32128-36, R3296-17, R3296-22, R915663P, R99-7443	Locknut - 3/8-16 Nylon	8	
27	<b>R150481</b>		Brush Assy - Brush Reel	4	
28	<b>R3296-9</b>	R32127-17	Locknut - Comb	12	
29	<b>R150426</b>		Washer - 8 SAE	12	
30	<b>R150425</b>		Bolt - Hex HD 8-32 x 5/8	12	
31	<b>R150485</b>	R2410-30	Cap - Protective Bearing Housing	1	
32	<b>R10-5010</b>		Screw - Roller Adjustment	2	
33	<b>R94-2958</b>	R2411-7	Stud - Alloy Ball Joint	2	

All original equipment manufacturers names and part numbers are used for identification purposes only, and we are in no way implying that our products are original equipment parts. Prices subject to change without notice.



# Replaces R&R Products Versa-Green

## 1860PS Parts

Single Point Cutting Unit  
Reel & Bedknife



Item No	R&R Part No.	OEM Part No.	Description	Qty Req	Order Quantity
34	<b>R3254-6</b>	446142, R01-166-0010, R01-166-0280, R01-166-0610, R12H304, R3253-5, R3254-18, R3290-223, R446140, R446142, R48-9370	Washer - Lock 3/8	4	
35	<b>R321-4</b>	400108, R01-150-1030, R01-178-0406, R20-3-AGD, R3222-1, R400108	Bolt - Hex HD 1/4-20 x 3/4	2	
36	<b>R3253-3</b>	446130, R01-166-0070, R01-166-0410, R23-9-GD, R24-7150, R352-167, R446128, R446130	Washer - Lock 1/4	2	
37	<b>R10-5060</b>		Bracket - Roller Adj	2	
38	<b>R65-8600</b>	R10-5040	Knob - Height Adjusting	2	
39	<b>R441674</b>	R01-173-0514, R01-173-0516, R3-7253, R3230-5	Screw - 5/16-18 x 1-3/4 Carriage	2	

All original equipment manufacturers names and part numbers are used for identification purposes only, and we are in no way implying that our products are original equipment parts. Prices subject to change without notice.



# Replaces R&R Products Versa-Green

## 1860PS Parts

Single Point Cutting Unit  
Reel & Bedknife



Item No	R&R Part No.	OEM Part No.	Description	Qty Req	Order Quantity
40	<b>R453009</b>	3256-3, R01-166-0400, R24-10-BD, R24-9-AD, R24H1136, R32-9650, R3256-2, R3256-23, R3256-67, R3290-217, R3556-3, R4-2390, R452006, R7-0152	Washer - Flat 5/16 SAE	2	
40	<b>R310266</b>	3256-3, R09056, R452004	Washer - Flat 5/16 USS	2	
41	<b>R32153-3</b>	R119-4038, R22-12-AJFD, R32127-35, R32146-5, R3296-18, R3296-31, RJ317000	Locknut - 5/16-18 ESNA Zinc	2	
42	<b>R70-1200G</b>		Frame - Single Point Adj. - Green	1	
43	<b>R57-5190</b>	R32110-19	Screw - Adjusting	2	
44	<b>R443818</b>	R01-191-0813, R3218-18, R3218-5	Nut - 1/2-13 Hex Jam Zinc	2	
45	<b>R77-0330</b>		Housing - Pivot Spa	1	
46	<b>R57-5260</b>	R107-7409	Pivot - 1/2-20 - Bed Bar	1	
47	<b>R52-2890</b>		Bushing - Flanged	4	
48	<b>R62-5510</b>	R52-2870, R52-2880	Bushing	2	
49	<b>R302-18</b>		Zerk - Grease Press Style	1	

All original equipment manufacturers names and part numbers are used for identification purposes only, and we are in no way implying that our products are original equipment parts. Prices subject to change without notice.



# Replaces R&R Products Versa-Green

## 1860PS Parts

Single Point Cutting Unit  
Reel & Bedknife



Item No	R&R Part No.	OEM Part No.	Description	Qty Req	Order Quantity
50	<b>R66-7230</b>		Spring - Compression	1	
51	<b>R257-5</b>	257-5	Washer - Thrust	1	
52	<b>R77-0350</b>		Retainer - Bearing	2	
53	<b>R66-7220</b>		Arm - Spring Handle Assy	1	
54	<b>R77-0300</b>	R77-0300-01	Handle Assy	1	
55	<b>R52-2990</b>	R324-25	Bolt - Spring Retainer	1	
56	<b>R187-0</b>	3256-25, R3256-25, R7-0032	Washer - Flat 7/16 SAE	1	
57	<b>R105-9770</b>	R10-5090, R26-5690, R70-9800, R94-3506, R94-3507	Hydraulic Motor - Reel Quick Release	1	
59	<b>R52-2930</b>		Bolt - Bed Bar	1	
60	<b>R63-9510</b>	R63-9480	Bushing - Rubber For Bed Bar	2	
61	<b>R52-2860</b>	R119-4150	Washer - Bed Bar Pivot	1	
62	<b>R52-2900</b>		Washer - Nylon	2	
63	<b>R443828</b>	R01-191-1018, R3220-6, R915089P	Nut - 5/8-18 Hex	2	
64	<b>R52-2910</b>		Bolt - Eccentric Bed Bar	1	
65	<b>R57-5200S</b>		Shield - Grass - Stainless	1	
66	<b>R57-5210</b>		Deflector - Styrene	1	
67	<b>R3295-46</b>		Tube - Rivet Smi Grass Shield	13	
68	<b>R36-7260</b>		Bar - Cut Off Grass Shield	1	

All original equipment manufacturers names and part numbers are used for identification purposes only, and we are in no way implying that our products are original equipment parts. Prices subject to change without notice.





# Replaces R&R Products Versa-Green

## 1860PS Parts

Single Point Cutting Unit  
Reel & Bedknife



Item No	R&R Part No.	OEM Part No.	Description	Qty Req	Order Quantity
69	<b>R3256-14</b>	R24-7-BD, R297-3, R32125-2, R3256-51, R51-2170	Washer - 10 Flat	5	
70	<b>R32144-73</b>	R104-2065	Screw - Machine Hex Washer Head	5	
71	<b>R57-9910</b>		Bolt - Pivot	2	
72	<b>R237-84</b>		Grommet - Rubber	2	
73	<b>R354083</b>	R104-7729, R361877	Decal - Danger	1	
74	<b>R400264</b>	323-7, R01-150-0180, R01-178-0610, R19H1732, R20-48-AD, R20-48-AGD, R32-9160, R3224-3, R323-29, R323-7, R400264, R908035P	Bolt - Hex HD 3/8-16 x 1-1/4	2	
75	<b>R52-3090</b>	R77-1080, R99-5654	Bracket - LH Rear Roller	1	
76	<b>R3290-125</b>		Screw - Set 1/4-20 x 5/16	2	
77	<b>R52-3060</b>	R77-1060, R99-5653	Bracket - RH Rear Roller	1	

All original equipment manufacturers names and part numbers are used for identification purposes only, and we are in no way implying that our products are original equipment parts. Prices subject to change without notice.



# Replaces R&R Products Versa-Green

## 1860PS Parts

Single Point Cutting Unit  
Reel & Bedknife



Item No	R&R Part No.	OEM Part No.	Description	Qty Req	Order Quantity
78	<b>R453011</b>	3256-24, 453011, R01-166-0100, R01-166-0120, R01-166-0270, R01-166-0500, R01-166-0600, R01-166-0620, R132-4593, R237-12, R24-10-AD, R24-11-AD, R24-11-BD, R24-12-AD, R24-12-BD, R30-9310, R32-8190, R3256-24, R3256-3, R3256-36, R3256-4, R47-9950	Washer - Flat 3/8 SAE Y/Zinc	4	
79	<b>R52-3100</b>		Bolt - Eccentric Shoulder LH	1	
80	<b>R52-3110</b>		Bolt - Shoulder HOC RH	1	
81	<b>R285-14</b>		Plug - Pipe Frame	2	
82	<b>R322-5</b>	322-5, R01-178-0508, R19H1905, R20-26-AD, R20-26-AGD, R30-9000, R400188, R513341, R519755, R908019P	Bolt - Hex HD 5/16-18 x 1	2	
83	<b>R3255-8</b>		Washer - Lock 5/16 Ext	2	
84	<b>R32108-20</b>		Screw - Flat HD Cntrsunk	2	
85	<b>R3290-316</b>		Bolt - Hex Tap 3/8-16 x 1-1/2	4	

All original equipment manufacturers names and part numbers are used for identification purposes only, and we are in no way implying that our products are original equipment parts. Prices subject to change without notice.



# Replaces R&R Products Versa-Green

## 1860PS Parts

*Single Point Cutting Unit  
Reel & Bedknife*



Item No	R&R Part No.	OEM Part No.	Description	Qty Req	Order Quantity
86	<b>R3255-9</b>	RF3077	Washer - Lock 3/8 Ext. Star	4	
87	<b>R321-5</b>	R321-31, R400110	Bolt - Hex HD 1/4-20 x 7/8	2	
88	<b>R3256-22</b>	R09061, R24-9-BD, R3-1032, R93-0954, R93-0989	Washer - Flat 1/4 Yellow	2	
89	<b>R301504</b>	R32127-24, R32146-17, R3296-16, R3296-42, R915661P, RM40333	Locknut - ESNA 1/4-20	2	
90	<b>R66-7240</b>		Bolt - Single Point Adjust.	2	

All original equipment manufacturers names and part numbers are used for identification purposes only, and we are in no way implying that our products are original equipment parts. Prices subject to change without notice.