

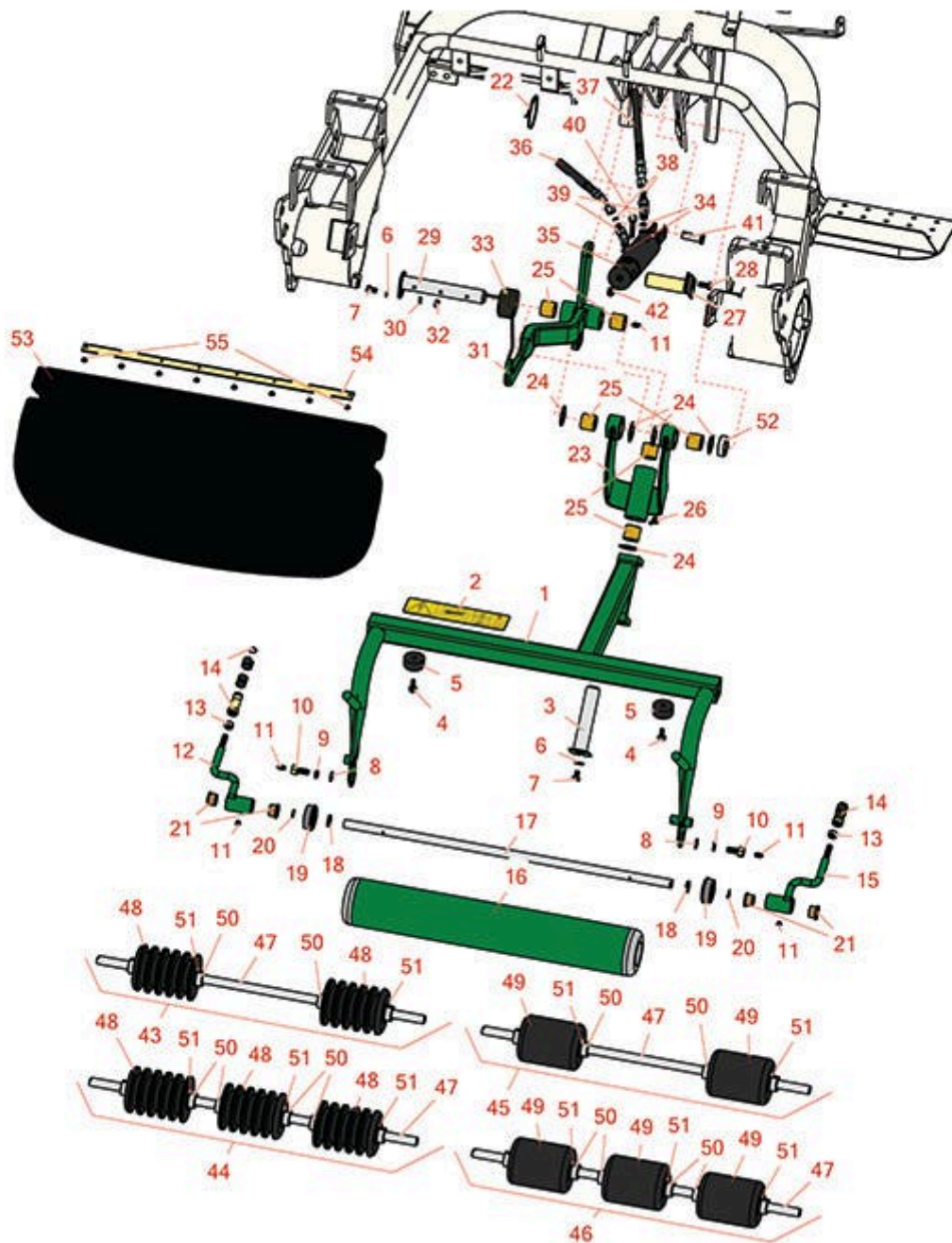


Replaces R&R Products Versa-Green

1860PS Parts

Traction Unit

Rear Pull Frame



All original equipment manufacturers names and part numbers are used for identification purposes only, and we are in no way implying that our products are original equipment parts. Prices subject to change without notice.



Replaces R&R Products Versa-Green

1860PS Parts

Traction Unit

Rear Pull Frame



Item No	R&R Part No.	OEM Part No.	Description	Qty Req	Order Quantity
1	R92-9177G		Frame - Pull RH - Green	1	
2	R93-8064		Decal - Warning	1	
3	R10-6090G		Pin - Pivot 4-7/8 Long - Green	1	
4	R49-2040	R32104-42, R32104-95, R32144-44	Bolt - Hex Washer 1/4-20 x 3/4	2	
5	R94-4548		Rubber Bumper	2	
6	R453009	3256-3, R01-166-0400, R24-10-BD, R24-9-AD, R24H1136, R32-9650, R3256-2, R3256-23, R3256-67, R3290-217, R3556-3, R4-2390, R452006, R7-0152	Washer - Flat 5/16 SAE	3	
6	R3253-4	R01-166-0110, R01-166-0510, R09053, R23-10-GD, R24-7170, R30-8520, R42-9850, R48-9350, R48-9360, R48-9570, R68-9420, R99-7577	Washer - Lock 5/16 Zinc	1	
7	R322-1	R01-178-0504, R20-22-AD, R20-22-AGD, R513337, RB310801	Bolt - Hex HD 5/16-18 x 1/2	2	

All original equipment manufacturers names and part numbers are used for identification purposes only, and we are in no way implying that our products are original equipment parts. Prices subject to change without notice.



Replaces R&R Products Versa-Green 1860PS Parts

*Traction Unit
Rear Pull Frame*



Item No	R&R Part No.	OEM Part No.	Description	Qty Req	Order Quantity
8	R453011	3256-24, 453011, R01-166-0100, R01-166-0120, R01-166-0270, R01-166-0500, R01-166-0600, R01-166-0620, R132-4593, R237-12, R24-10-AD, R24-11-AD, R24-11-BD, R24-12-AD, R24-12-BD, R30-9310, R32-8190, R3256-24, R3256-3, R3256-36, R3256-4, R47-9950	Washer - Flat 3/8 SAE Y/Zinc	2	
9	R3253-21	3253-21, R215-51, R30-8470, R7-1912, RMT3949	Washer - Lock 3/8	2	
10	R11-0160		Screw - Roller Shaft	2	

All original equipment manufacturers names and part numbers are used for identification purposes only, and we are in no way implying that our products are original equipment parts. Prices subject to change without notice.



Replaces R&R Products Versa-Green 1860PS Parts

*Traction Unit
Rear Pull Frame*



Item No	R&R Part No.	OEM Part No.	Description	Qty Req	Order Quantity
11	R302-5	R173-0, R21-6010, R255825, R302-37, R302-47, R302-57, R302-58, R302-6, R31-0300, R32-9660, R471214, R471223, R471226, R60-0800, R62-3880, R92-4181, RJD7797, RJD7842, RJD7844, RM0004	Fitting - Grease	5	
12	R92-0586G		Arm - Pull LH - Green	1	
13	R3220-3	R01-191-0624, R3290-149	Nut - Jam Ball Joint	2	
14	R99-1460	R2411-28, R2411-29, R2411-30, R2411-6, R2411-8, R8-7710, R94-2959	Receiver - Ball Joint	2	
15	R92-0585G		Arm - Pull RH - Green	1	
16	R99-4277G		Basket Roller - Smooth - Green	1	
17	R21-8470		Shaft - Roller	1	
18	R253-83		Seal - Oil 7/8 OD x 5/8 ID	2	
19	R251-141		Bearing - Roller	2	
20	R3290-317		Washer - Wave	2	

All original equipment manufacturers names and part numbers are used for identification purposes only, and we are in no way implying that our products are original equipment parts. Prices subject to change without notice.



Replaces R&R Products Versa-Green 1860PS Parts

*Traction Unit
Rear Pull Frame*



Item No	R&R Part No.	OEM Part No.	Description	Qty Req	Order Quantity
21	R3-1506	R256-287, R3709088, R4-4550, R75-2160, R9329	Bushing - Bronze	4	
22	R3M41933		Cable Ties - 6" Bulk Pkg/100	1	
23	R105-0452G		Pivot Hinge Assy - Center - Green	1	
24	R10-8110		Washer - Pivot Pin	6	
25	R3-0348	R324124, R342124	Bushing	4	
26	R302-60		Zerk - Grease 90 Deg.	1	
27	R68-5560		Pivot Pin - Cylinder	1	
28	R322-3	R01-150-1420, R01-178-0506, R09109, R20-24-AD, R20-24-AGD, R48-9270, R513339, R908017P, RB311201	Bolt - Hex HD 5/16-18 x 3/4	1	
29	R27-2550G		Pin - Hinge 6-5/8 Long - Green	1	
31	R110-3955G		Lift Arm Assy - Center - Green	1	
32	R3296-29	3296-29, R1-804256, R915662P	Locknut - 5/16-18 ESNA	1	
33	R110-3953	R106-9080	Spring - Torsion - Center	1	
34	R237-22	R107-8844, R232-72, R237-78	O-Ring	2	
35	R106-9064		Hydraulic Cylinder - Center	1	

All original equipment manufacturers names and part numbers are used for identification purposes only, and we are in no way implying that our products are original equipment parts. Prices subject to change without notice.



Replaces R&R Products Versa-Green

1860PS Parts

Traction Unit

Rear Pull Frame



Item No	R&R Part No.	OEM Part No.	Description	Qty Req	Order Quantity
35	R107-2563		Seal Kit	1	
36	R150637		Hose - Rear Lift Cyl	1	
37	R150639		Hydraulic Hose Assy - Rear Lift Cylinder	1	
38	R237-21		O-Ring	2	
39	R340-103	R340-137	Hydraulic Fitting - 45 Deg	2	
40	R3272-11	R01-151-0010, R01-151-0040, R28-18-D, R28-28-D, R3211-72	Pin - Cotter	1	
41	R283-8	R17-3670, R7-2035	Clevis Pin - 1/2 x 1-27/64	1	
42	R700415		Zerk - Grease 1/8 PTF 45 Deg	1	
43	R150325		Basket Roller - Grooved UHMW Polyethylene 2 Section	1	
44	R150329		Basket Roller - Grooved UHMW Polyethylene 3 Section	1	
45	R150330		Basket Roller - Smooth UHMW Polyethylene 2 Section	1	
46	R150332		Roller - Smooth UHMW Polyethylene 3-1/2 3 Sec	1	
47	R150326		Shaft - Stainless Roller	1	
48	R150327		Roller Section - 3.5 UHMW Grooved	0	
49	R150331		Section - 3-1/2 UHMW Smooth	0	
50	R150328	R3709875, R94-9213	Collar - Retaining 5/8	0	
51	R302295		Washer	0	
52	R93-2384		Spacer - Carrier Frame	1	
53	R150257		Grass Basket Assembly	1	

All original equipment manufacturers names and part numbers are used for identification purposes only, and we are in no way implying that our products are original equipment parts. Prices subject to change without notice.



Replaces R&R Products Versa-Green

1860PS Parts

Traction Unit

Rear Pull Frame



Item No	R&R Part No.	OEM Part No.	Description	Qty Req	Order Quantity
54	R104-2607		Strip - Reinforcing Grass Basket	1	
55	R3290-382	R3269-15	Rivet - 5/32 x 1/2 Pop Rivet	8	

All original equipment manufacturers names and part numbers are used for identification purposes only, and we are in no way implying that our products are original equipment parts. Prices subject to change without notice.