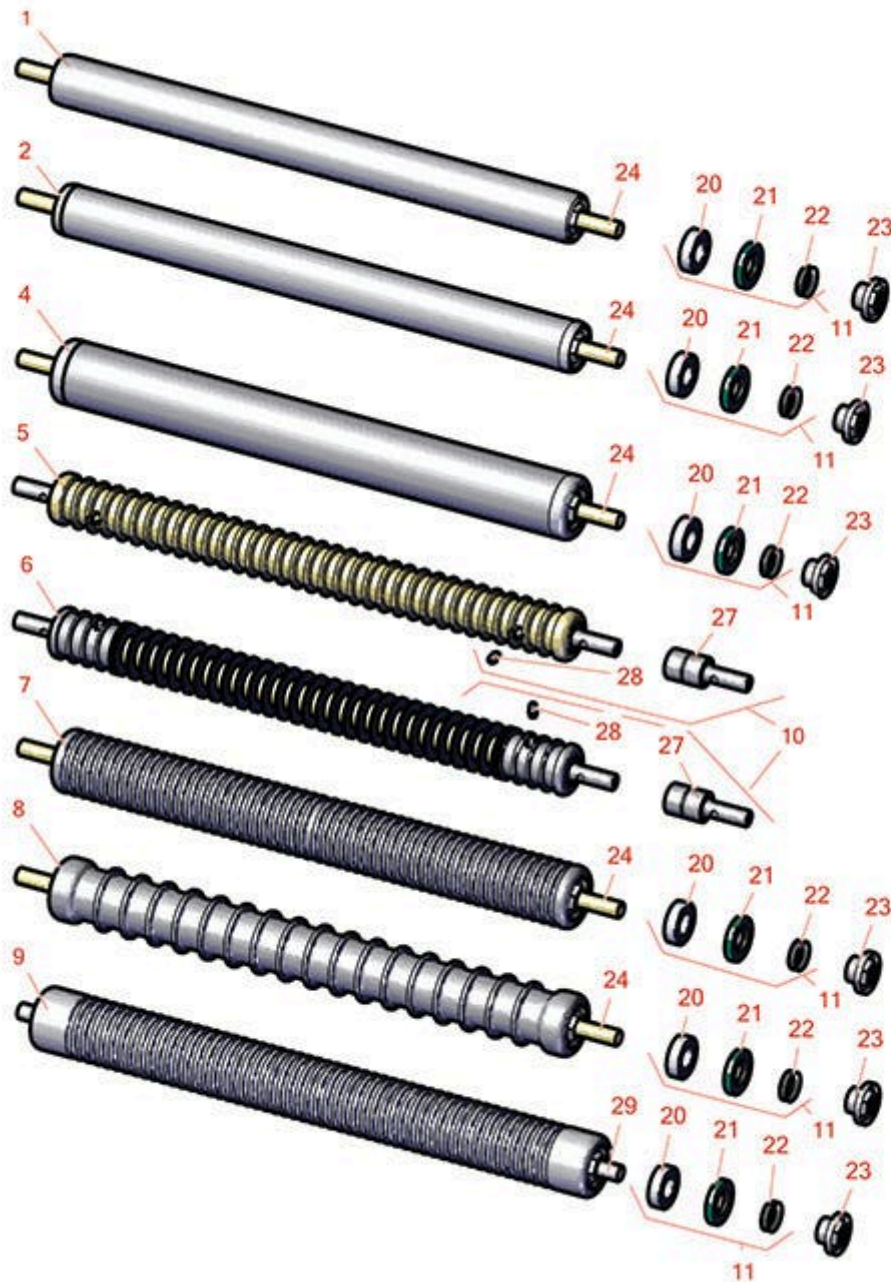




Replaces Toro Greensmaster Flex 2100

Parts

DPA Cutting Unit - Model 04251 & 04252
Rollers



All original equipment manufacturers names and part numbers are used for identification purposes only, and we are in no way implying that our products are original equipment parts. Prices subject to change without notice.



Replaces Toro Greensmaster Flex 2100 Parts

DPA Cutting Unit - Model 04251 & 04252
Rollers



| Item No | R&R Part No. | OEM Part No. | Description | Qty Req | Order Quantity |
|---|------------------|---|---|---------|----------------|
| 1 | R115-7356 | 115-7356 | Roller - Smooth Tubular Aluminum - 2 in Dia | 1 | |
| <i>Detail Description: Constructed with a through shaft, this light weight aluminum roller uses a through shaft and ball bearings.:</i> | | | | | |
| 2 | R140-5560 | 105-5776, 106-6945, 107-3509, 119-4093, 120-9595, 140-5560 | Roller - Smooth 2 in Steel Rear | 1 | |
| 4 | R115-7388 | 115-7388, 140-5681 | Roller - Smooth Tubular Steel 2-1/2 in Dia | 1 | |
| <i>Detail Description: Constructed with a through shaft, this steel roller uses a through shaft and ball bearings.:</i> | | | | | |
| 5 | R52-3200 | 12-0840, 52-3200, 71-1550 | Roller - Grooved Machined Solid Steel | 1 | |
| <i>Detail Description: Machined from solid steel, this heavy weight roller uses greasable "water-pump" style bearings.:</i> | | | | | |
| 6 | R21-6540 | 21-6540 | Roller - Grooved Repairable Steel | 1 | |
| <i>Detail Description: Constructed with greasable "water-pump" style bearings, this roller can be repaired by unscrewing the ends and replacing the series of washers and spacers.:</i> | | | | | |
| 7 | R115-7360 | 115-7360 | Roller - Narrow Grooved Machined Aluminum - 2 1/2 | 1 | |
| <i>Detail Description: Constructed with a through shaft, this aluminum roller is machined with narrow grooves and uses ball bearings.:</i> | | | | | |
| 8 | R115-7386 | 115-7386 | Roller - Wide Grooved Machined Aluminum - 2-1/2 Dia | 1 | |
| <i>Detail Description: Constructed with a through shaft, this aluminum roller is machined with 1-1/8" wide grooves for the least amount of ground contact and uses ball bearings.:</i> | | | | | |

All original equipment manufacturers names and part numbers are used for identification purposes only, and we are in no way implying that our products are original equipment parts. Prices subject to change without notice.



Replaces Toro Greensmaster Flex 2100 Parts

DPA Cutting Unit - Model 04251 & 04252
Rollers



| Item No | R&R Part No. | OEM Part No. | Description | Qty Req | Order Quantity |
|--|--------------|--|------------------------------------|---------|----------------|
| 9 | R121-4675 | 121-4675 | Roller - Extended Machined Grooved | 1 | |
| Overhaul Kits | | | | | |
| 10 | R107-1588 | 107-1588 | Overhaul Kit - Roller | 1 | |
| <i>Detail Description: Includes 2 ea.: R302-5 Grease Fittings & R52-3180 Bearings:</i> | | | | | |
| 11 | R107-1594 | 107-1594 | Overhaul Kit - Roller | 1 | |
| <i>Detail Description: Includes 2 ea.: R106-6941 Seals, R106-6942 V-Rings & R251-347 Bearings:</i> | | | | | |
| Other Parts Available | | | | | |
| 20 | R251-347 | 251-347, 72-5690 | Bearing - Ball | 2 | |
| 21 | R106-6941 | 106-6941 | Seal - Double Lip | 2 | |
| 22 | R106-6942 | 106-6942 | V-Ring - Roller | 2 | |
| 23 | R114-3745 | 106-6939, 108-3151, 114-3745, 114-5411 | Locknut - Bearing - Stainless | 2 | |
| 24 | R119-4090 | 119-4090 | Shaft - Roller - Hardened | 1 | |
| 27 | R52-3180 | 21-6410, 52-3180 | Bearing - Front Roller | 2 | |
| 28 | R302-5 | 21-6010, 302-11, 302-37, 302-47, 302-5, 302-57, 302-58, 302-6, 31-0300, 32-9660, 60-0800, 62-3880, 92-4181 | Fitting - Grease | 2 | |

All original equipment manufacturers names and part numbers are used for identification purposes only, and we are in no way implying that our products are original equipment parts. Prices subject to change without notice.



Replaces Toro Greensmaster Flex 2100 Parts

*DPA Cutting Unit - Model 04251 & 04252
Rollers*



| Item No | R&R Part No. | OEM Part No. | Description | Qty Req | Order Quantity |
|---------|------------------|--------------|---------------|---------|----------------|
| 29 | R120-5404 | 120-5404 | Shaft- Roller | 1 | |

All original equipment manufacturers names and part numbers are used for identification purposes only, and we are in no way implying that our products are original equipment parts. Prices subject to change without notice.