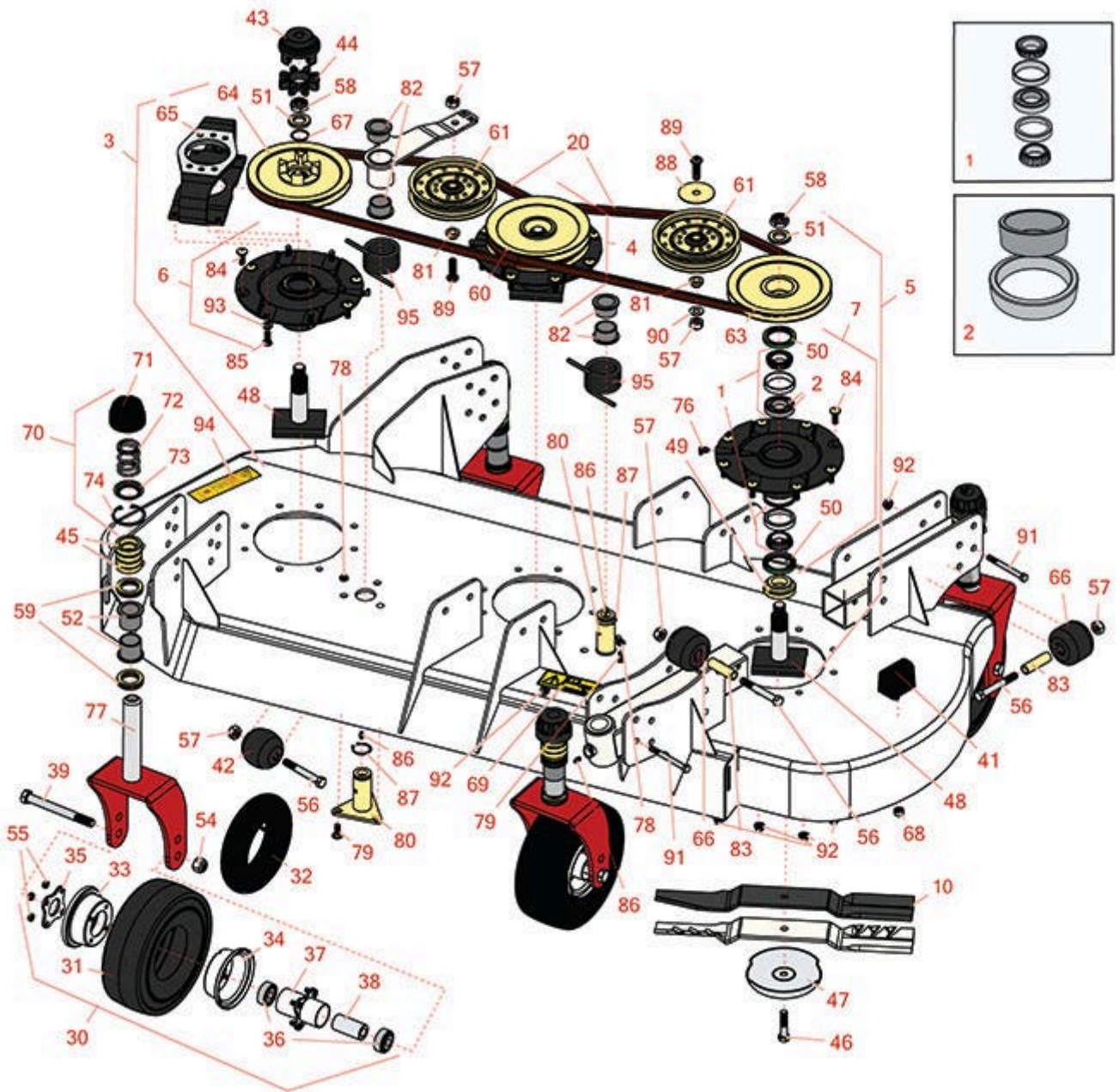




Replaces Toro Groundsmaster 5900-D Parts



Rotary Mower - Models 31598
Rotary Deck - RH - Model 31592



All original equipment manufacturers names and part numbers are used for identification purposes only, and we are in no way implying that our products are original equipment parts. Prices subject to change without notice.



Replaces Toro Groundsmaster 5900-D Parts

Rotary Mower - Models 31598
Rotary Deck - RH - Model 31592



Item No	R&R Part No.	OEM Part No.	Description	Qty Req	Order Quantity
---------	--------------	--------------	-------------	---------	----------------

Overhaul Kits

1	R110-8297	110-8297, 26-1830	Bearing Set w/Retaining Rings - Spindle	3	
2	R104-3549	104-3549	Spacer Set - Spindle Bearing	3	
3	R119-4547	104-3529, 119-4547, 139-1035	Driving Spindle Assy	1	

Tech Note: Also incl itmes 51,58,64 & 67:

4	R119-4548	104-3530, 119-4548, 139-1037	Double Driven Spindle Assy	1	
---	------------------	------------------------------------	----------------------------	---	--

Tech Note: Also incl itmes 51,58,64 & 67:

5	R119-4549	104-3531, 119-4549, 139-1038	High Driven Spindle Assy	1	
---	------------------	------------------------------------	--------------------------	---	--

Tech Note: Also incl itmes 51,58,64 & 67:

6	R119-4546	104-3552, 119-3552, 119-4546	Spindle Housing Assy	1	
---	------------------	------------------------------------	----------------------	---	--

Tech Note: Incl items 1,50 & 76:

7	R119-4775	119-4775	Spindle Housing Assy	2	
---	------------------	----------	----------------------	---	--

Tech Note: Incl itmes 1,50 & 76:

Rotary Blades

10	R110-5946-03	110-5946-03	Mower Blade	3	
----	---------------------	-------------	-------------	---	--

Belts

20	R112-7377	112-7377	Belt - V - B Section	2	
----	------------------	----------	----------------------	---	--

Tires & Wheels

All original equipment manufacturers names and part numbers are used for identification purposes only, and we are in no way implying that our products are original equipment parts. Prices subject to change without notice.



Replaces Toro Groundsmaster 5900-D Parts

Rotary Mower - Models 31598
Rotary Deck - RH - Model 31592



Item No	R&R Part No.	OEM Part No.	Description	Qty Req	Order Quantity
30	R93-4240	69-6930, 85-6420, 92-1654, 93-4240	Wheel - Pneu. Assy 10x3.50-4	4	
30	R93-5973	76-1880, 93-5973	Wheel - Assy-Foam Filled 10x3.5-4SM	4	
31	R93-4243	93-4243	Tire - 10x3.50-4 (8 Ply) Pneu	4	
31	R150591	150591	Tire - 10x3.50-4 (8 Ply) Foam Filled	4	
32	R48251	93-4244	Tube - 4.10x350-4	4	
33	R95-2741	137-5552, 95-2741	Rim - Wheel Half w/o Valve Hole	4	
34	R93-4239	93-4239	Rim - Wheel Half w/Valve Hole	4	
35	R93-4242	93-4242	Plate - Caster Wheel	4	
Other Parts Available					
36	R108-9017	108-9017, 120-3366	Bearing-Stainless	8	
36	R93-4237	93-4237	Bearing	8	
37	R93-5980	93-4238, 93-5980	Hub Assy - w/o Bearings/Spacer	4	
38	R93-4241	93-4241	Spacer - Caster Wheel	4	
39	R327-24	327-24	Bolt - Hex HD 5/8-11 x 6	4	
41	R87-3470	87-3470	Bumper - Rubber	1	
42	R29-4820	29-4820	Roller	2	
43	R104-3541	104-3541	Hub - Drive	1	
44	R104-3542	104-3542	Spider	1	

All original equipment manufacturers names and part numbers are used for identification purposes only, and we are in no way implying that our products are original equipment parts. Prices subject to change without notice.



Replaces Toro Groundsmaster 5900-D Parts



Rotary Mower - Models 31598
Rotary Deck - RH - Model 31592

Item No	R&R Part No.	OEM Part No.	Description	Qty Req	Order Quantity
45	R69-1510	69-1510	Spacer - 1/2 Caster Fork	16	
46	R92-5816	92-5816	Bolt - Hex HD 1/2-20 x 2-1/4	3	
47	R72-9361	27-1000, 27-1001, 72-9360, 72-9361	Cup - Anti-Scalp	3	
48	R104-3554	104-3554	Shaft - Spindle Assy.	3	
49	R92-9800	69-6950, 69-6980, 92-9800	Spacer - Spindle	3	
50	R253-154	253-154	Seal - Spindle	6	
51	R104-8322	104-8322, 120-5576	Washer - Spindle Shaft Hardened	3	
52	R69-6470	69-6470	Bushing - Flanged	8	
54	R3296-53	3296-53	Locknut - 5/8-11 ESNA Yellow	4	
55	R32128-16	32128-16	Locknut - 5/16-24 Flanged Top	16	
56	R325-17	01-150-0640, 01-150-0850, 01-178-0832, 01-178-0836, 20-97-AGD, 325-17, 325-18, 48-9260	Bolt - Hex Head	4	
57	R3296-25	30-3380, 32127-21, 32127-31, 3290-160, 3290-33, 3296-13, 3296-25, 3296-45, 329645	Locknut - 1/2-13 Heavy ESNA	6	

All original equipment manufacturers names and part numbers are used for identification purposes only, and we are in no way implying that our products are original equipment parts. Prices subject to change without notice.



Replaces Toro Groundsmaster 5900-D Parts

Rotary Mower - Models 31598
Rotary Deck - RH - Model 31592



Item No	R&R Part No.	OEM Part No.	Description	Qty Req	Order Quantity
58	R32127-46	32127-46, 3296-60	Locknut	3	
59	R69-6860	69-6860	Washer - 1/8 - Caster Wheel	16	
60	R104-3547	104-3547	Pulley - Double Driven	1	
61	R110-9596	110-9596, 132-9421	Pulley- Flat Idler	2	
<i>Tech Note: Center & LH Decks:</i>					
61	R01-268-0160	01-268-0160	Pulley - V Idler	2	
63	R104-3548	104-3548	Pulley - Higher Driven	1	
64	R104-3545	104-3545	Pulley - Drive	1	
65	R104-3544	104-3544	Mount - Motor Drive	1	
66	R115-3366	115-3366	Roller	2	
67	R106-7159	106-7159	O-Ring	3	
68	R33025-00	32025-00, 33025-00	Locknut - 10mm x 1.5 Jam	1	
69	R93-7818	93-7818	Decal - Blade Torque	1	
70	R92-9727	92-9727	Cap Assy - HOC	4	
71	R92-8861	92-5582, 92-8861	Cap - HOC	4	
72	R92-9726	92-9726	Spring - Compression	4	
73	R92-5583	92-5583	Washer- Cap	4	
74	R92-5581	92-5581	Ring - Retaining	4	
76	R302-60	302-60	Zerk - Grease 90 Deg.	3	
77	R110-5999-01	110-5999-01	Castor Fork Assy	4	

All original equipment manufacturers names and part numbers are used for identification purposes only, and we are in no way implying that our products are original equipment parts. Prices subject to change without notice.



Replaces Toro Groundsmaster 5900-D Parts



*Rotary Mower - Models 31598
Rotary Deck - RH - Model 31592*

Item No	R&R Part No.	OEM Part No.	Description	Qty Req	Order Quantity
78	R3296-59	3296-59	Locknut - 3/8-16 Nylon Jam	6	
79	R3231-2	01-157-0170, 01-173-0608, 3231-2, 3231-22, 3231-28, 900063P	Bolt - Carriage 3/8-16 x 1	6	
80	R114-0997	114-0997	Idler Pivot Assy	2	
82	R93-4510	93-4510	Bushing	4	
81	R108-1924	108-1924	Spacer-Idler	2	
83	R115-2144	115-2144	Tube - Spacer	2	
84	R114-8195	114-8195, R & R ONLY	Bolt- Ribbed Neck	20	
85	R323-6	01-150-0010, 01-178-0608, 20-47-AD, 20-47-AGD, 3224-2, 323-6, 49-3510, 908034P, 908332	Bolt - Hex HD 3/8-16 x 1 GR5 YZ	4	
86	R302-5	21-6010, 302-11, 302-37, 302-47, 302-5, 302-57, 302-58, 302-6, 31-0300, 32-9660, 60-0800, 62-3880, 92-4181	Fitting - Grease	6	
87	R32120-84	32120-84	Ring - Snap	2	

All original equipment manufacturers names and part numbers are used for identification purposes only, and we are in no way implying that our products are original equipment parts. Prices subject to change without notice.



Replaces Toro Groundsmaster 5900-D Parts



Rotary Mower - Models 31598
Rotary Deck - RH - Model 31592

Item No	R&R Part No.	OEM Part No.	Description	Qty Req	Order Quantity
88	R100-3102	100-3102	Washer-Flat	1	
89	R108-1993	108-1993	Screw - 1/2-13 x 1 3/4 Button Socket Head Cap	2	
90	R3256-26	01-166-0540, 01-166-0820, 17-2530, 24-13-BD, 30-8570, 3256-26, 356206, 48-9390	Washer - 1/2 in	1	
91	R323-42	01-178-0630, 323-42	Bolt - Hx HD 3/8-16 x 3 3/4	8	
92	R104-8301	104-8301, 104-9301, 109-6658, 133-7570	Locknut - 3/8-16 Nylon Flanged	28	
93	R453011	01-166-0100, 01-166-0120, 01-166-0270, 01-166-0500, 01-166-0600, 01-166-0620, 132-4593, 2356-3, 237-12, 24-10-AD, 24-11-AD, 24-11-BD, 24-12-AD, 24-12-BD, 30-9310, 32-8190, 3256-24, 3256-3, 3256-36, 3256-4, 453011, 47-9950, 48-9220, 513458, 7-0052	Washer - Flat 3/8 SAE Y/Zinc	4	

All original equipment manufacturers names and part numbers are used for identification purposes only, and we are in no way implying that our products are original equipment parts. Prices subject to change without notice.



Replaces Toro Groundsmaster 5900-D Parts



Rotary Mower - Models 31598
Rotary Deck - RH - Model 31592

Item No	R&R Part No.	OEM Part No.	Description	Qty Req	Order Quantity
94	R100-6578	100-6578	Decal- Danger	1	
95	R108-1921	108-1921	Torsion Spring - Idler	2	

All original equipment manufacturers names and part numbers are used for identification purposes only, and we are in no way implying that our products are original equipment parts. Prices subject to change without notice.