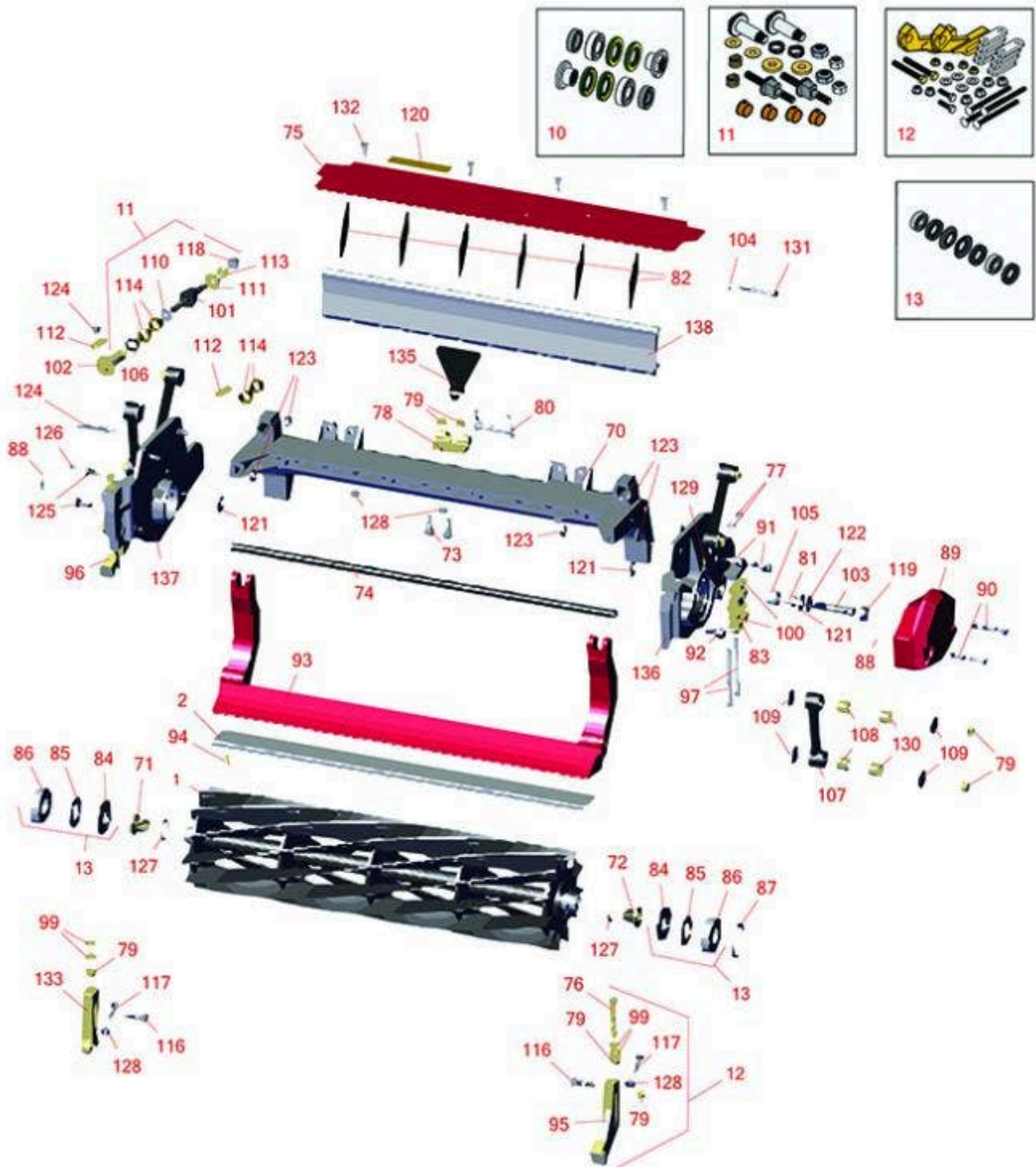




# Replaces Toro Reelmaster 3100-D Parts

27in DPA Cutting Unit - Models 03188, 03189 & 03190  
Reel & Bedknife



All original equipment manufacturers names and part numbers are used for identification purposes only, and we are in no way implying that our products are original equipment parts. Prices subject to change without notice.



# Replaces Toro Reelmaster 3100-D Parts

27in DPA Cutting Unit - Models 03188, 03189 & 03190  
Reel & Bedknife



Item No	R&R Part No.	OEM Part No.	Description	Qty Req	Order Quantity
<b>R&amp;R Reels, Lifetime Guaranteed</b>					
1	<b>R133-0182</b>	133-0182	Reel - 5 Blade Razor Series Radial 27x7	1	
1	<b>R137-8469</b>	137-8469	Reel - 5 Blade Razor Series Radial Low Drag w/Bearings and Seals 27x7	1	
1	<b>R133-0184</b>	133-0184	Reel - 8 Blade Razor Series Radial 27x7	1	
1	<b>R137-8470</b>	137-8470	Reel - 8 Blade Razor Series Radial w/Bearings and Seals 27x7	1	
1	<b>R133-8278</b>	133-8278	Reel - 11 Blade Razor Series Radial 27x7	1	
1	<b>R137-8471</b>	137-8471	Reel - 11 Blade Razor Series Radial w/Bearings and Seals 27x7	1	
<b>R&amp;R Bedknives, Lifetime Guaranteed</b>					
2	<b>R114-9388</b>	114-9388	Bedknife - 27 in Unit - Standard	1	
2	<b>R114-9390</b>	114-9390	Bedknife - 27 in Unit - Heavy Duty	1	
<b>R&amp;R Razor Tool Steel Bedknives, Lifetime Guaranteed</b>					
2	<b>R112-8910</b>	112-8910	Bedknife - Razor Tool Steel - 27 High Cut	1	
<b>Overhaul Kits</b>					
10	<b>R114-5430</b>	114-5430	Overhaul Kit - Roller	1	
<i>Tech Note: Includes 4 ea.: R112-7494 Seals; 2 ea.: R302-5 Grease Zerks, R114-3717 Seals, R112-5290 Bearings &amp; R114-3745 Locknuts:</i>					
11	<b>R120-7230</b>	120-7230	Overhaul Kit - Fits DPA Units	1	
<i>Tech Note: Incl 2 ea.: R108-0015, R115-7039, R119-4155, R120-5116, R120-5118, R120-5120, R3296-33, R3296-48 &amp; 4 ea: R106-5344:</i>					
12	<b>R110-9600</b>	110-9600	High HOC Kit	1	

All original equipment manufacturers names and part numbers are used for identification purposes only, and we are in no way implying that our products are original equipment parts. Prices subject to change without notice.



# Replaces Toro Reelmaster 3100-D Parts

27in DPA Cutting Unit - Models 03188, 03189 & 03190  
Reel & Bedknife



Item No	R&R Part No.	OEM Part No.	Description	Qty Req	Order Quantity
<i>Tech Note: Includes 1 ea.: R120-0404, R120-0405 &amp; 2 ea: R112-7451, R322-16, R445722 &amp; 4 ea.: R106-9758, R104-8300, R453011, R104-8301 &amp; 8 ea: R106-3925:</i>					
13	<b>R131-3233</b>	131-3233	Groomer/Rrb Seal Kit	1	
<b>Other Parts Available</b>					
70	<b>R112-8935</b>	112-8935	Frame - Center - 27 in Unit	1	
71	<b>R127-7109</b>	127-7109	Insert-Threaded - 7 in Reel (RH)	1	
72	<b>R127-7111</b>	127-7111	Insert-Threaded - 7 in Reel (LH)	1	
73	<b>R3231-25</b>	01-173-0610, 30-9970, 3231-25, 3231-3, 900064P	Bolt - Carriage 3/8-16 x 1-1/4	2	
74	<b>R112-8936</b>	112-8936	Tube- Support - 27 in Units	1	
75	<b>R112-8942</b>	112-8942	Front Grass Shield Assy - 27 in Units	1	
76	<b>R112-7451</b>	100-9429, 112-7451	Bolt - Hex Tap 3/8-16 x 2-3/4	2	
76	<b>R107-4026</b>	107-4026	Bolt - Hex Tap 3/8-16 x 3-3/4	2	
77	<b>R104-8300</b>	104-8300, 104-8300, 119-4041	Locknut - 5/16-18 Flanged Y/Zinc	6	
78	<b>R110-4058</b>	110-4058	Bracket - Chain	1	
79	<b>R104-8301</b>	104-8301, 104-9301, 109-6658, 133-7570	Locknut - 3/8-16 Nylon Flanged	2	
80	<b>R107-7400</b>	107-7400	Pin - Lynch	1	
81	<b>R56-9520</b>	56-9520	Bushing - Nyliner	2	
82	<b>R110-1706</b>	110-1706	Deflector	6	

All original equipment manufacturers names and part numbers are used for identification purposes only, and we are in no way implying that our products are original equipment parts. Prices subject to change without notice.



# Replaces Toro Reelmaster 3100-D Parts

27in DPA Cutting Unit - Models 03188, 03189 & 03190  
Reel & Bedknife



Item No	R&R Part No.	OEM Part No.	Description	Qty Req	Order Quantity
83	<b>R106-3924</b>	106-3924	Bracket - Rear Roller	2	
84	<b>R127-4284</b>	127-4284	Washer - Special	2	
85	<b>R115-3299</b>	115-3299	Seal- Flocked	2	
86	<b>R115-3296</b>	115-3296	Bearing	2	
87	<b>R105-5700</b>	105-5700, 115-5258	Wave Washer - Bearing	1	
88	<b>R112-6967</b>	112-6967	O-Ring	2	
89	<b>R119-0614-01</b>	119-0614-01	Weight	1	
90	<b>R101526</b>	01-150-0970, 01-178-0620, 101526, 20-53-AGD, 321-11, 3224-8, 323-11, 323-12, 323-31, 323-4, 323-47	Bolt - Hex HD 3/8-16 x 2-1/2 GR5	2	
91	<b>R107-2979</b>	107-2979	Bolt - Shoulder	6	
92	<b>R3234-11</b>	3234-11	Bolt - Hex Washer HD	2	
93	<b>R112-8908-01</b>	112-8908-01	Bedbar - 27 in - Fits OEM Units Only	1	
94	<b>R119-4151</b>	119-4151	Screw - Bedknife 5/16-18 x 17/32	10	
95	<b>R120-0404</b>	120-0404	Bracket- High HOC - LH	1	
<i>Tech Note: Fits 2011 &amp; Newer:</i>					
96	<b>R120-0405</b>	120-0405	Bracket - High HOC - RH	1	
<i>Tech Note: Fits 2011 &amp; Newer:</i>					
97	<b>R3230-30</b>	3230-30	Bolt - Carriage 5/16x4 1/2	4	

All original equipment manufacturers names and part numbers are used for identification purposes only, and we are in no way implying that our products are original equipment parts. Prices subject to change without notice.



# Replaces Toro Reelmaster 3100-D Parts

27in DPA Cutting Unit - Models 03188, 03189 & 03190  
Reel & Bedknife



Item No	R&R Part No.	OEM Part No.	Description	Qty Req	Order Quantity
97	<b>R106-9758</b>		Bolt - Carriage 5/16x4	4	
97	<b>R3230-26</b>	3230-26	Screw - Carriage 5/16-18 x 3	4	
99	<b>R453011</b>	01-166-0100, 01-166-0120, 01-166-0270, 01-166-0500, 01-166-0600, 01-166-0620, 132-4593, 2356-3, 237-12, 24-10-AD, 24-11-AD, 24-11-BD, 24-12-AD, 24-12-BD, 30-9310, 32-8190, 3256-24, 3256-3, 3256-36, 3256-4, 453011, 47-9950, 48-9220, 513458, 7-0052	Washer - Flat 3/8 SAE Y/Zinc	4	
100	<b>R119-0626</b>	119-0626	Shim - Roller - 1/4 in - Slotted	8	
<i>Tech Note: 2011 &amp; Newer:</i>					
101	<b>R115-7039</b>	115-7039	Screw - Adjuster - Bedbar	2	
102	<b>R120-5118</b>	120-5118	Shaft - Adjuster	2	
<i>Tech Note: 2012 &amp; Newer:</i>					
103	<b>R106-9623</b>	106-9623	Bolt - Bedbar	2	
104	<b>R3256-74</b>	3256-74	Washer - Flat	1	
105	<b>R106-9618</b>	106-9618	Bushing - Rubber	2	

All original equipment manufacturers names and part numbers are used for identification purposes only, and we are in no way implying that our products are original equipment parts. Prices subject to change without notice.



## Replaces Toro Reelmaster 3100-D Parts

27in DPA Cutting Unit - Models 03188, 03189 & 03190  
Reel & Bedknife



Item No	R&R Part No.	OEM Part No.	Description	Qty Req	Order Quantity
106	<b>R120-5116</b>	120-5116	Washer - Wave	2	
107	<b>R16-9759</b>	16-9759	Link Assy	4	
108	<b>R93-6981</b>	93-6981	Spacer	8	
109	<b>R93-8806</b>	93-8806	Washer-Hardened	16	
110	<b>R108-0015</b>	108-0015	Washer - Flat	2	
111	<b>R119-4155</b>	119-4155	Washer - Hardened	2	
112	<b>R99-2097</b>	99-2097	Detent - Bed Bar Adjuster	2	
113	<b>R120-5120</b>	120-5120	Spring - Compression	2	
114	<b>R106-5344</b>	106-5344	Bushing - Flanged and Keyed	4	
116	<b>R3231-4</b>	01-157-0440, 01-173-0612, 3231-4	Bolt - Carriage 3/8-16 x 1-1/2	2	
117	<b>R322-16</b>	322-16, Apr-00	Bolt - Hex HD 5/16-18 x 1-1/8	2	
118	<b>R3296-48</b>	119-4039, 32146-7, 3296-34, 3296-48	Locknut - 7/16-14 ESNA	2	
119	<b>R3296-33</b>	3296-33	Locknut - 5/8-18 ESNA Jam	12	
120	<b>R93-6688</b>	93-6688	Decal - Warning	1	
121	<b>R61-1950</b>	61-1950	Washer - Nylon - Bed Bar	4	

All original equipment manufacturers names and part numbers are used for identification purposes only, and we are in no way implying that our products are original equipment parts. Prices subject to change without notice.



# Replaces Toro Reelmaster 3100-D Parts

27in DPA Cutting Unit - Models 03188, 03189 & 03190  
Reel & Bedknife



Item No	R&R Part No.	OEM Part No.	Description	Qty Req	Order Quantity
122	<b>R453017</b>	01-166-0050, 01-166-0240, 01-166-0800, 24-13-AD, 24-14-AD, 32-8110, 3256-26, 3256-6, 453017, 69-8980, 87-7270	Washer - Flat 1/2	2	
123	<b>R32128-43</b>	30-8990, 32128-43, 3290-357	Nut - Flanged Whiz - 3/8-16	6	
124	<b>R107-7773</b>	107-7773	Bolt - Soc HD Cap 5/16-18 x 2-1/2	1	
125	<b>R323-6</b>	01-150-0010, 01-178-0608, 20-47-AD, 20-47-AGD, 3224-2, 323-6, 49-3510, 908034P, 908332	Bolt - Hex HD 3/8-16 x 1 GR5 YZ	2	
126	<b>R302-5</b>	21-6010, 302-11, 302-37, 302-47, 302-5, 302-57, 302-58, 302-6, 31-0300, 32-9660, 60-0800, 62-3880, 92-4181	Fitting - Grease	2	
127	<b>R92-2601</b>	92-2601	Snap Ring	2	

All original equipment manufacturers names and part numbers are used for identification purposes only, and we are in no way implying that our products are original equipment parts. Prices subject to change without notice.



## Replaces Toro Reelmaster 3100-D Parts

27in DPA Cutting Unit - Models 03188, 03189 & 03190  
Reel & Bedknife



Item No	R&R Part No.	OEM Part No.	Description	Qty Req	Order Quantity
128	<b>R445722</b>	30-8980, 32128-2, 32128-20, 32128-20, 445722	Nut - Serrated Washer	2	
129	<b>R170714</b>	302-34, 302-39, 62-3520	Fitting - Pressure Relief	2	
130	<b>R94-8945</b>	94-8945	Bushing - Bronze - Link Bar	8	
131	<b>R322-14</b>	01-150-0830, 01-178-0524, 30-8900, 322-14	Bolt - Hex HD 5/16-18 x 3 GR5	1	
132	<b>R3234-7</b>	3234-7	Bolt - Hex Washer HD 5/16-18 x 5/8	4	
133	<b>R125-2796</b>	125-2796	Bracket- Front HOC	2	
<i>Tech Note: Fits 2013 &amp; Newer:</i>					
135	<b>R110-4088-03</b>	110-4088-03, 119-8010-03	Kickstand	1	
136	<b>R137-5976</b>	137-5976	Side Plate Assy - 7 in LH Aluminum	1	
137	<b>R137-5979</b>	137-5979	Side Plate Assy - 7 in RH Aluminum	1	
138	<b>R125-1997</b>	125-1997	Grass Shield - Rear 27 in Unit	1	

All original equipment manufacturers names and part numbers are used for identification purposes only, and we are in no way implying that our products are original equipment parts. Prices subject to change without notice.