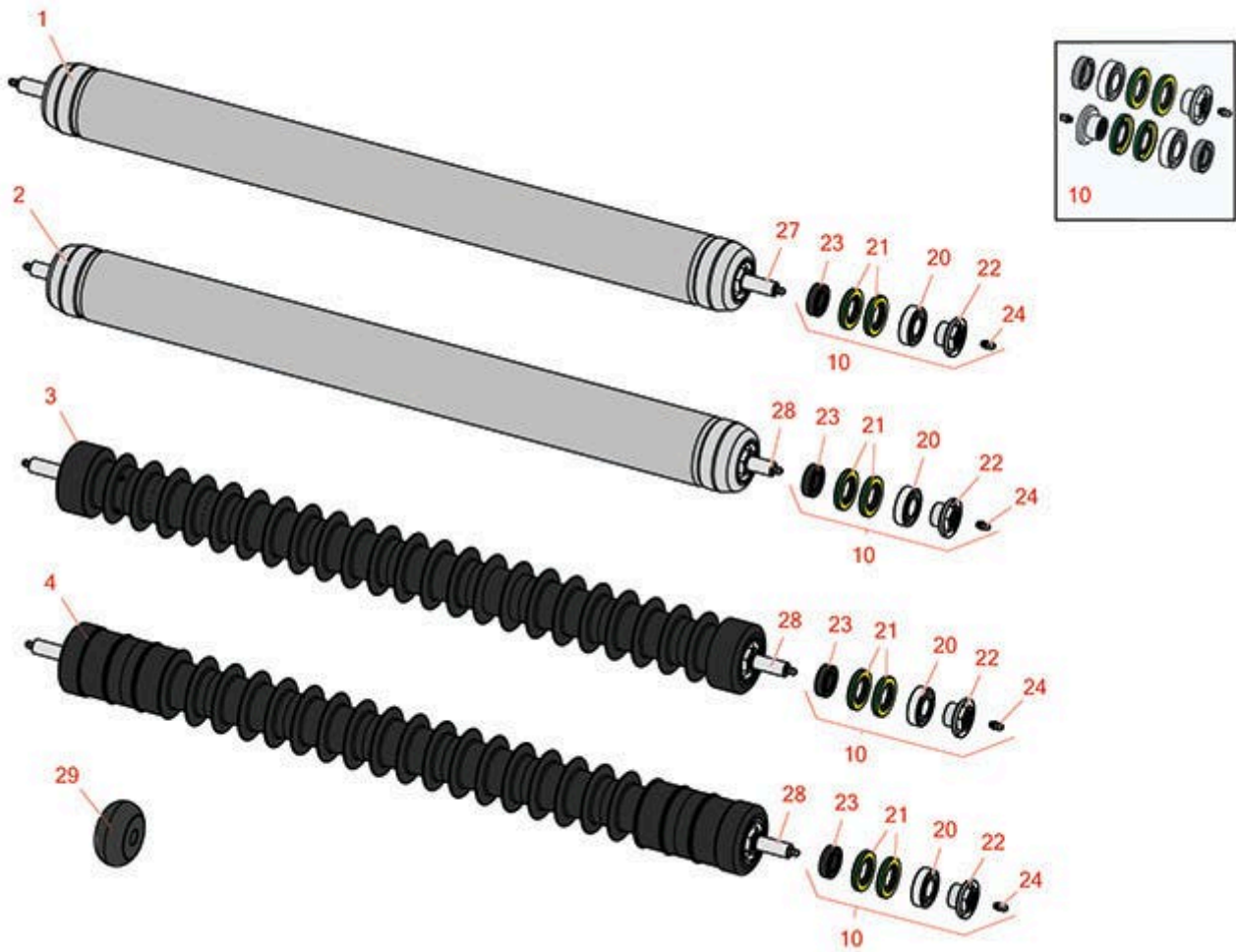




Replaces Toro Reelmaster 3100-D Parts

32in DPA Cutting Unit - Model 03182
Rollers



All original equipment manufacturers names and part numbers are used for identification purposes only, and we are in no way implying that our products are original equipment parts. Prices subject to change without notice.



Replaces Toro Reelmaster 3100-D Parts

32in DPA Cutting Unit - Model 03182
Rollers



Item No	R&R Part No.	OEM Part No.	Description	Qty Req	Order Quantity
1	R112-8961	112-8961	Roller - Smooth Rear Steel - Long - 32" Units	0	
<i>Tech Note: Constructed with a through shaft, this heavy-duty roller uses greasable ball bearings.:</i>					
2	R114-9384	114-9384	Roller - Smooth Front Steel - 32" Units	0	
<i>Tech Note: Constructed with a through shaft, this heavy-duty roller uses greasable ball bearings.:</i>					
3	R1503985	117-0990	Roller - Fusion Grooved UHMW Polyethylene - 32" Units	0	
<i>Tech Note: 3" Dia. Fusion Rollers combine the best features of our UHMW plastic rollers with a heavy-duty internal bearing system. Machined from solid UHMW plastic that prevents build-up of debris. This roller has a patented deep groove des... <Click Part# for more>:</i>					
4	R1503986	119-0640	Roller - Fusion Grooved UHMW Polyethylene Shoulder - 32" Units	0	
<i>Tech Note: 3" Dia. Fusion Rollers combine the best features of our UHMW plastic rollers with a heavy duty internal bearing system. Machined from solid UHMW plastic that prevents build-up of debris. This roller has a patented deep groove des... <Click Part# for more>:</i>					
Overhaul Kits					
10	R114-5430	114-5430	Overhaul Kit - Roller	0	
<i>Tech Note: Includes 4 ea.: R112-7494 Seals; 2 ea.: R302-5 Grease Zerks, R114-3717 Seals, R112-5290 Bearings & R114-3745 Locknuts:</i>					
Other Parts Available					
20	R112-5290	112-5290, 251--346, 251-346, 72-5430	Bearing - Stainless	2	
21	R112-7494	112-7494	Seal	4	
22	R114-3745	114-3745, 114-5411	Locknut - Bearing - Stainless	2	

All original equipment manufacturers names and part numbers are used for identification purposes only, and we are in no way implying that our products are original equipment parts. Prices subject to change without notice.



Replaces Toro Reelmaster 3100-D Parts

32in DPA Cutting Unit - Model 03182

Rollers



Item No	R&R Part No.	OEM Part No.	Description	Qty Req	Order Quantity
23	R114-3717	114-3717	Seal	2	
24	R302-5	21-6010, 302-11, 302-37, 302-47, 302-5, 302-57, 302-58, 302-6, 31-0300, 32-9660, 60-0800, 62-3880, 92-4181	Fitting - Grease	2	
27	R117-0987	117-0987	Shaft - Front Roller	1	
28	R112-8964	112-8964	Shaft - Long Solid Roller F & R	1	
29	R119-4276	119-4276	Roller - Tipper	2	

All original equipment manufacturers names and part numbers are used for identification purposes only, and we are in no way implying that our products are original equipment parts. Prices subject to change without notice.