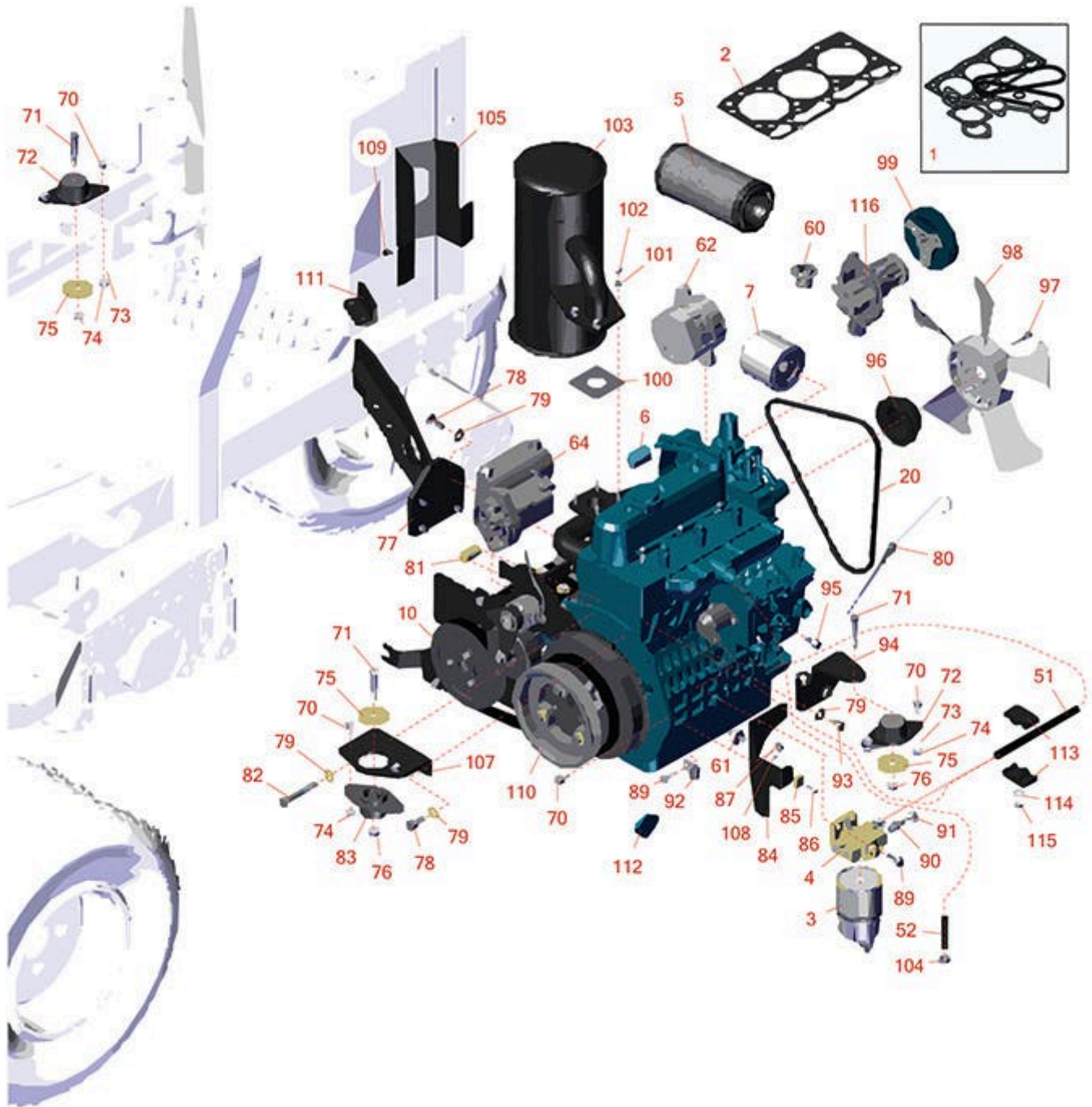




Replaces Toro Reelmaster 3100-D Parts

Traction Unit - Model 03200
Engine



All original equipment manufacturers names and part numbers are used for identification purposes only, and we are in no way implying that our products are original equipment parts. Prices subject to change without notice.



Replaces Toro Reelmaster 3100-D Parts

Traction Unit - Model 03200
Engine



| Item No | R&R Part No. | OEM Part No. | Description | Qty Req | Order Quantity |
|----------------|---------------------|--|--------------------------------------|---------|----------------|
| 1 | R107-7848 | 107-7848 | Upper Gasket Kit | 1 | |
| 2 | R108-6573 | 108-6573 | Gasket - Cylinder Head | 1 | |
| Filters | | | | | |
| 3 | R98-9764 | 98-9764 | Element - Water Fuel Separator | 1 | |
| 4 | R98-9305 | 98-9305 | Water/Fuel Separator Assy | 1 | |
| 5 | R93-2195 | 93-2195 | Baldwin Air Filter | 1 | |
| 5 | R33-1300 | 108-3808, 33-1300, 33-1300-09 | Baldwin Filter - Air Element | 1 | |
| 5 | RRF10125 | 108-3808, 93-2195 | SilverGuard Air Filter | 1 | |
| 6 | RX1624105670 | 98-9493, 99-9430 | Kubota Element - Breather | 1 | |
| 7 | RX7000074034 | 99-8384 | Kubota Oil Filter | 1 | |
| 7 | RRF10625 | 99-8384 | SilverGuard Oil Filter | 1 | |
| 7 | R42-9030 | 104-5167, 108-3841, 127-0511, 42-9030, 67-4330, 98-9651 | Baldwin Oil Filter - Engine | 1 | |
| 7 | RRF10606 | 108-3841, 67-4330, 98-9651 | SilverGuard Oil Filter - 2 3/4" Long | 1 | |
| 7 | RRF10607 | 104-5167, 108-3841, 42-9030, 99-8384 | SilverGuard Oil Filter - 3 3/4" Long | 1 | |

Engine

All original equipment manufacturers names and part numbers are used for identification purposes only, and we are in no way implying that our products are original equipment parts. Prices subject to change without notice.



Replaces Toro Reelmaster 3100-D Parts

Traction Unit - Model 03200
Engine



| Item No | R&R Part No. | OEM Part No. | Description | Qty Req | Order Quantity |
|------------------------------|---------------------|--|----------------------------------|---------|----------------|
| 10 | RX1J99500000 | 104-4899, 107-7830, 112-9906, 138-6905 | Kubota Engine D1105 E | 1 | |
| Belts | | | | | |
| 20 | RX1624197010 | 130-1241, 99-3467 | V-Belt - Fan - Bestorq | 1 | |
| Hoses | | | | | |
| 51 | R104-4857 | 104-4857 | Hose-Fuel | 1 | |
| 52 | R106-1126 | 106-1126, 19-3250, 71-3381 | Hose-Fuel | 1 | |
| Gauges and Controls | | | | | |
| 60 | RX1943473014 | 105-2881, 98-7438, 98-7778, 98-9715 | Kubota Thermostat Assy | 1 | |
| 61 | RX1545139012 | 98-91416, 98-9416 | Kubota Sensor - Oil Pressure | 1 | |
| 62 | RX1624164012 | 98-9474 | Kubota Alternator - Assy 40A | 1 | |
| 62 | R131-6557 | 131-6557 | Alternator Assy | 1 | |
| 64 | RX3756063010 | 98-9705 | Kubota Starter | 1 | |
| Other Parts Available | | | | | |
| 70 | R3234-5 | 3234-5, 62-3310 | Bolt - 5/16-18x3/4 Hx Ser Was HD | 7 | |
| 71 | R323-11 | 01-150-1440, 01-178-0618, 20-52-AD, 3224-7, 323-11 | Bolt - 3/8-16 x 2 1/4 GR5 | 3 | |

All original equipment manufacturers names and part numbers are used for identification purposes only, and we are in no way implying that our products are original equipment parts. Prices subject to change without notice.



Replaces Toro Reelmaster 3100-D Parts

Traction Unit - Model 03200
Engine



| Item No | R&R Part No. | OEM Part No. | Description | Qty Req | Order Quantity |
|---------|---------------------|--|--------------------------------|---------|----------------|
| 72 | R83-1030 | 108-6879, 121-9076, 83-1030, 83-1031 | Mount - Engine | 2 | |
| 73 | R3255-8 | 3255-8 | Washer - Lock 5/16 Ext | 4 | |
| 74 | R445722 | 30-8980, 32128-2, 32128-20, 32128-20 , 445722 | Nut - Serrated Washer | 6 | |
| 75 | R80-8560 | 80-8560 | Washer - Hardened | 3 | |
| 76 | R3296-39 | 32127-25, 32128-36, 3290-357, 3296-17, 3296-22, 3296-39, 915663P, 99-7443 | Locknut - 3/8-16 Nylon | 3 | |
| 77 | R100-4838-03 | 100-4838-03 | Mount-Engine | 1 | |
| 78 | R43-0090 | 43-0090, 95-8812 | Bolt - 10mm x 1.25 x 25 Hex HD | 5 | |
| 79 | R80-6990 | 80-6990 | Washer - Hardened | 10 | |
| 80 | RX1G62236410 | 105-3720, 105-4579, 115-8530 | Kubota Gauge - Oil | 1 | |
| 81 | R95-8736 | 95-8736 | Spacer | 1 | |
| 82 | R42-9370 | 42-9370 | Bolt - Hex HD 10mm x 70mm | 1 | |
| 83 | R93-5265 | 107-2560, 125-5244, 93-5265 | Mount - Engine | 1 | |
| 84 | R100-4867-03 | 100-4867-03 | Support - Throttle | 1 | |

All original equipment manufacturers names and part numbers are used for identification purposes only, and we are in no way implying that our products are original equipment parts. Prices subject to change without notice.



Replaces Toro Reelmaster 3100-D Parts

Traction Unit - Model 03200
Engine



| Item No | R&R Part No. | OEM Part No. | Description | Qty Req | Order Quantity |
|---------|---------------------|--|--------------------------------|---------|----------------|
| 85 | R81-1690 | 81-1690 | Clamp - Cable | 1 | |
| 86 | R32105-13 | 32105-13 | Screw - Hx Was HD 10-32 x 3/4 | 1 | |
| 87 | R32128-44 | 32128-44 | Nut | 2 | |
| 89 | R3234-29 | 3234-17, 3234-29 | Bolt - 5/16-18x1 Serr Hex | 3 | |
| 90 | R353-783 | 353-783 | Fitting - Straight | 2 | |
| 91 | R2412-108 | 2412-108, 97406 | Clamp - Worm - 1/4 - Stainless | 2 | |
| 92 | R2412-10 | 2412-10, Mar-06 | R-Clamp | 1 | |
| 93 | R63-7790 | 42-9300, 63-7790 | Bolt - Hex HD M10x1.25x20mm | 3 | |
| 94 | R95-8937-03 | 95-8937, 95-8937-03 | Mount - Engine - LH | 1 | |
| 95 | R98-9311 | 98-9311 | Swivel-Throttle | 1 | |
| 96 | RX1624174250 | 110-0972, 98-9584, 99-3453 | Kubota Pulley - Fan | 1 | |
| 97 | RX0175450620 | 108-2873, 33113-025, 43-2600, 48-7640, 99-8363 | Kubota Bolt - Flange | 4 | |
| 98 | RX1628374110 | 104-4246, 99-3461 | Kubota Fan | 1 | |
| 99 | RX1624974280 | 105-3745, X1624974280 | Kubota Fan Drive Pulley | 1 | |
| 100 | RX1526312370 | 98-9611, 99-8343 | Kubota Gasket - Muffler | 1 | |

All original equipment manufacturers names and part numbers are used for identification purposes only, and we are in no way implying that our products are original equipment parts. Prices subject to change without notice.



Replaces Toro Reelmaster 3100-D Parts

Traction Unit - Model 03200
Engine



| Item No | R&R Part No. | OEM Part No. | Description | Qty Req | Order Quantity |
|---------|--------------------|---|----------------------------|---------|----------------|
| 101 | R3253-4 | 01-166-0110, 01-166-0510, 23-10-GD, 24-7170, 30-8520, 3253-4, 42-9850, 48-9350, 48-9360, 48-9570, 68-9420, 99-7577 | Washer - Lock 5/16 Zinc | 4 | |
| 102 | R33014-00 | 33014-00, 42-9580 | Nut - Jam 8mm x 1.25 | 4 | |
| 103 | R104-4834 | 104-4834, 95-8942 | Muffler | 1 | |
| 104 | R92-2379 | 92-2379 | Clamp - Hose | 2 | |
| 105 | R99-3425-03 | 99-3425, 99-3425-03 | Guard - Exhaust | 1 | |
| 107 | R95-8926-03 | 95-8926, 95-8926-03, 99-3618-03 | Mount - Engine - Front | 1 | |
| 108 | R3296-2 | 32127-10, 3296-2, 9157404 | Nut - #10 Lock | 1 | |
| 109 | R300403 | 32144-4, 32144-63, 49-2040 | Bolt - Hex HD 1/4-20 x 1/2 | 4 | |
| 110 | R99-3412-03 | 99-3412, 99-3412-03 | Pulley | 1 | |
| 112 | R99-3514 | 99-3514 | Cover | 1 | |
| 111 | R95-8943-03 | 95-8943-03 | Bracket-Muffler | 1 | |
| 113 | R56-7971 | 56-7971 | Clamp - Tube | 2 | |

All original equipment manufacturers names and part numbers are used for identification purposes only, and we are in no way implying that our products are original equipment parts. Prices subject to change without notice.



Replaces Toro Reelmaster 3100-D Parts

Traction Unit - Model 03200
Engine



| Item No | R&R Part No. | OEM Part No. | Description | Qty Req | Order Quantity |
|---------|------------------|--|------------------------------|---------|----------------|
| 114 | R453011 | 01-166-0100, 01-166-0120, 01-166-0270, 01-166-0500, 01-166-0600, 01-166-0620, 132-4593, 2356-3, 237-12, 24-10-AD, 24-11-AD, 24-11-BD, 24-12-AD, 24-12-BD, 30-9310, 32-8190, 3256-24, 3256-3, 3256-36, 3256-4, 453011, 47-9950, 48-9220, 513458, 7-0052 | Washer - Flat 3/8 SAE Y/Zinc | 1 | |
| 115 | R3296-29 | 1-804256, 3290-357, 3296-29, 915662P | Locknut - 5/16-18 ESNA | 1 | |
| 116 | R107-9089 | 104-4885, 107-9089, 108-4426 | Water Pump Assy | 1 | |

All original equipment manufacturers names and part numbers are used for identification purposes only, and we are in no way implying that our products are original equipment parts. Prices subject to change without notice.