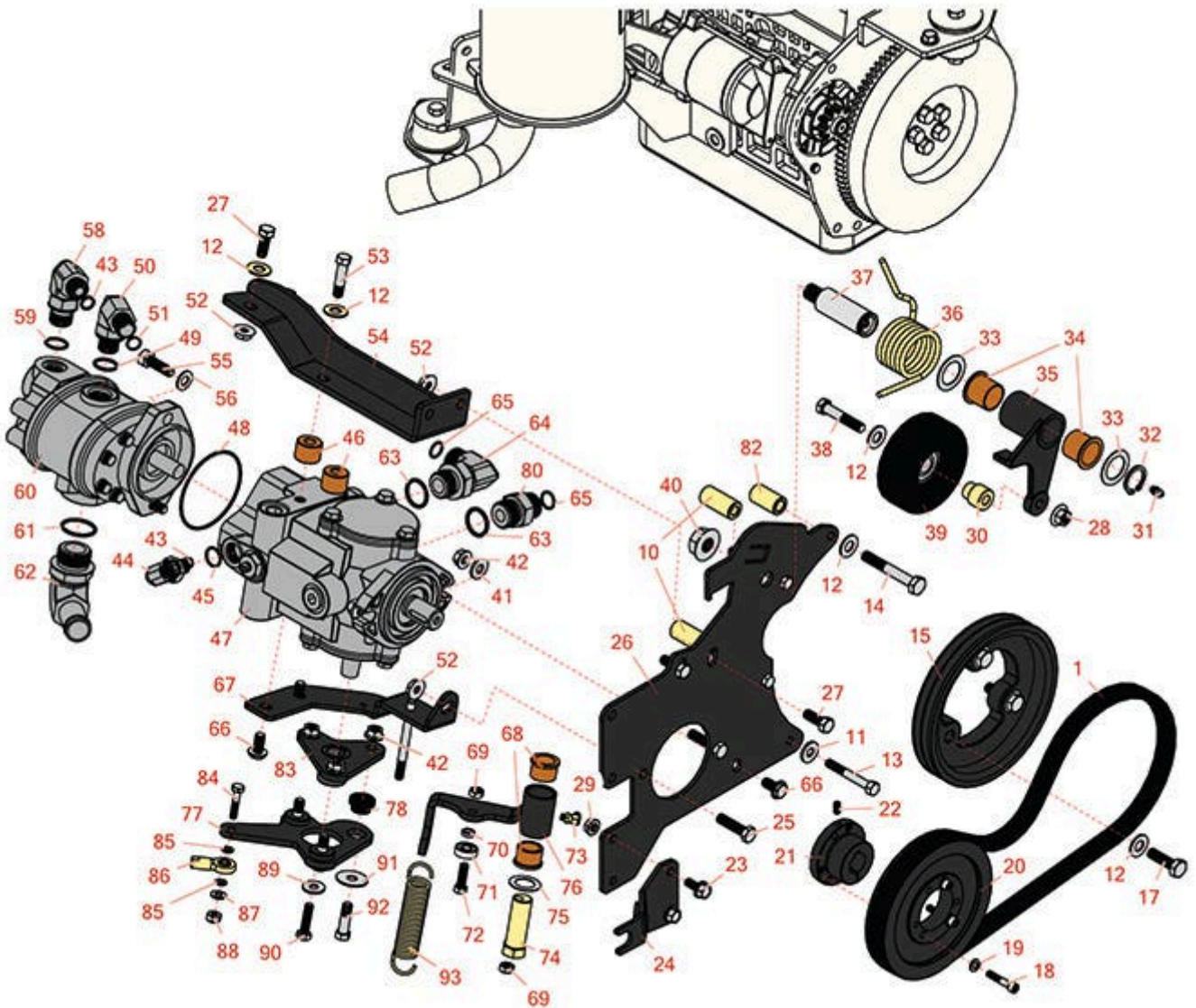




# Replaces Toro Reelmaster 3100-D Parts

*Traction Unit - Model 03201*

*Hydrostat & Neutral Arm*



All original equipment manufacturers names and part numbers are used for identification purposes only, and we are in no way implying that our products are original equipment parts. Prices subject to change without notice.



# Replaces Toro Reelmaster 3100-D Parts

*Traction Unit - Model 03201*

*Hydrostat & Neutral Arm*



Item No	R&R Part No.	OEM Part No.	Description	Qty Req	Order Quantity
<b>Belts</b>					
1	<b>R150512</b>	95-8730	Belt - Hydrastat	1	
<b>Other Parts Available</b>					
10	<b>R95-8941</b>	95-8941	Spacer - Pump Mount	4	
11	<b>R87-8640</b>	87-7510, 87-8640	Washer - Flat	3	
12	<b>R80-6990</b>	80-6990	Washer - Hardened	9	
13	<b>R151379</b>	33114-060, 42-9510	Bolt - Hx HD 8-1.25 x 65mm	1	
14	<b>R42-9370</b>	42-9370	Bolt - Hex HD 10mm x 70mm	1	
15	<b>R99-3412-03</b>	99-3412, 99-3412-03	Pulley	1	
17	<b>R43-0090</b>	43-0090, 95-8812	Bolt - 10mm x 1.25 x 25 Hex HD	3	
18	<b>R316797</b>	321-13	Bolt - 1/4-20 x 1-1/4	3	
19	<b>R3253-3</b>	01-166-0070, 01-166-0410, 23-9-GD, 24-7150, 3253-3, 3256-1, 352-167	Washer - Lock 1/4	3	
20	<b>R93-6841</b>	93-6841	Pulley	1	
21	<b>R93-6842</b>	93-6842	Bushing - Taper Lock 7/8	1	
22	<b>R3245-36</b>	3245-36	Screw - Set - Hx Soc HD	1	
23	<b>R3234-5</b>	3234-5, 62-3310	Bolt - 5/16-18x3/4 Hx Ser Was HD	2	

All original equipment manufacturers names and part numbers are used for identification purposes only, and we are in no way implying that our products are original equipment parts. Prices subject to change without notice.



# Replaces Toro Reelmaster 3100-D Parts

*Traction Unit - Model 03201*

*Hydrostat & Neutral Arm*



Item No	R&R Part No.	OEM Part No.	Description	Qty Req	Order Quantity
24	<b>R104-0464-03</b>	104-0464-03, 99-3553, 99-3553-03	Bracket - Support	1	
25	<b>R323-8</b>	01-150-0060, 01-178-0612, 20-49-AD, 20-49-AGD, 323-8, 3273-41, 908036P	Bolt - Hex HD 3/8-16 x 1-1/2 GR8	2	
26	<b>R95-8933-03</b>	95-8933, 95-8933-03	Plate - Mount - Pump	1	
27	<b>R3234-11</b>	3234-11	Bolt - Hex Washer HD	4	
28	<b>R32128-21</b>	32128-21	Locknut - Flanged 3/8-16 Whiz Top Lock	1	
29	<b>R32128-44</b>	32128-44	Nut	2	
30	<b>R95-8806</b>	95-8806	Spacer	1	
31	<b>R302-5</b>	21-6010, 302-11, 302-37, 302-47, 302-5, 302-57, 302-58, 302-6, 31-0300, 32-9660, 60-0800, 62-3880, 92-4181	Fitting - Grease	1	
32	<b>R458039</b>	32151-36	Ring - Retaining	1	
33	<b>R74-1810</b>	74-1810	Washer	2	
34	<b>R99-3631</b>	99-3631	Bushing - Flanged	2	
35	<b>R99-3623-03</b>	99-3623-03	Arm - Idler	1	

All original equipment manufacturers names and part numbers are used for identification purposes only, and we are in no way implying that our products are original equipment parts. Prices subject to change without notice.



# Replaces Toro Reelmaster 3100-D Parts

*Traction Unit - Model 03201*

*Hydrostat & Neutral Arm*



Item No	R&R Part No.	OEM Part No.	Description	Qty Req	Order Quantity
36	<b>R95-8917</b>	95-8917	Spring - Torsion	1	
37	<b>R99-3529</b>	99-3529	Shaft - Pivot - Idler	1	
38	<b>R323-10</b>	01-150-0680, 01-178-0616, 100-6663, 100-8320, 1489, 20-51-AD, 20-51-AGD, 3224-6, 323-10, 323-35, 908336	Bolt - Hex HD 3/8-16 x 2	1	
39	<b>R95-8802</b>	95-8802	Pulley- Idler	1	
40	<b>R32128-54</b>	32128-54	Nut - 5/8-18 Hex Serr Flanged	1	
41	<b>R100-4852</b>	100-4852	Washer - Hardened	2	
42	<b>R3296-39</b>	32127-25, 32128-36, 3290-357, 3296-17, 3296-22, 3296-39, 915663P, 99-7443	Locknut - 3/8-16 Nylon	6	
43	<b>R237-22</b>	107-8844, 237-22, 237-78	O-Ring	1	
44	<b>R340-18</b>	340-18	Hydraulic Fitting	1	
45	<b>R237-79</b>	237-79	O-Ring	1	
46	<b>R99-3440</b>	99-3440	Spacer	2	
47	<b>R104-4890</b>	104-4832, 104-4890	Pump - Piston	1	

All original equipment manufacturers names and part numbers are used for identification purposes only, and we are in no way implying that our products are original equipment parts. Prices subject to change without notice.



# Replaces Toro Reelmaster 3100-D Parts

*Traction Unit - Model 03201*

*Hydrostat & Neutral Arm*



Item No	R&R Part No.	OEM Part No.	Description	Qty Req	Order Quantity
48	<b>R353-949</b>	353-949, 60-3520	O-Ring	1	
49	<b>R237-80</b>	237-80, 327-80	O-Ring	1	
50	<b>R340-105</b>	340-105	Hydraulic Fitting	1	
51	<b>R237-30</b>	23-6320, 237-30	O-Ring - Seal	1	
52	<b>R32128-43</b>	30-8990, 32128-43, 3290-357	Nut - Flanged Whiz - 3/8-16	4	
53	<b>R323-19</b>	323-19	Bolt - Hx HD 3/8-16 x 1 5/8	2	
54	<b>R99-3436-03</b>	99-3436, 99-3436-03	Support- Pump	1	
55	<b>R3274-1</b>	3274-1	Bolt - 3/8-16 x 1 1/4 Soc HD Cap	2	

All original equipment manufacturers names and part numbers are used for identification purposes only, and we are in no way implying that our products are original equipment parts. Prices subject to change without notice.



# Replaces Toro Reelmaster 3100-D Parts

*Traction Unit - Model 03201*

*Hydrostat & Neutral Arm*



Item No	R&R Part No.	OEM Part No.	Description	Qty Req	Order Quantity
56	<b>R453011</b>	01-166-0100, 01-166-0120, 01-166-0270, 01-166-0500, 01-166-0600, 01-166-0620, 132-4593, 2356-3, 237-12, 24-10-AD, 24-11-AD, 24-11-BD, 24-12-AD, 24-12-BD, 30-9310, 32-8190, 3256-24, 3256-3, 3256-36, 3256-4, 453011, 47-9950, 48-9220, 513458, 7-0052	Washer - Flat 3/8 SAE Y/Zinc	2	
58	<b>R340-77</b>	340-100, 340-77, 95-7889	Hydraulic Fitting	1	
59	<b>R237-42</b>	237-42, 31-4160	O-Ring	1	
60	<b>R95-8601</b>	95-8601	Pump - Gear	1	
61	<b>R237-117</b>	237-117	O - Ring	1	
62	<b>R56-9530</b>	56-9530	Hydraulic Fitting - 90 Deg	1	
63	<b>R237-81</b>	237-81, 237.81, 327-81	O-Ring	1	
64	<b>R340-139</b>	340-139	Hydraulic Fitting - 90 Deg	1	

All original equipment manufacturers names and part numbers are used for identification purposes only, and we are in no way implying that our products are original equipment parts. Prices subject to change without notice.



# Replaces Toro Reelmaster 3100-D Parts

*Traction Unit - Model 03201*

*Hydrostat & Neutral Arm*



Item No	R&R Part No.	OEM Part No.	Description	Qty Req	Order Quantity
65	<b>R237-65</b>	237-65, 237.65	O-Ring	1	
66	<b>R3234-1</b>	321-11, 3234-1	Bolt - Flanged Serrated Hex HD 3/8-16 x 3/4	2	
67	<b>R95-8960-03</b>	95-8960, 95-8960-03	Bracket- Neutral	1	
68	<b>R256-113</b>	256-113	Bushing - 3/4 ID x 1 1/8 Flange	2	
69	<b>R3296-29</b>	1-804256, 3290-357, 3296-29, 915662P	Locknut - 5/16-18 ESNA	2	
70	<b>R100-4817</b>	100-4817	Spacer - Bearing	1	
71	<b>R251-259</b>	251-259, 251-307	Bearing - Ball	1	
72	<b>R3274-104</b>	3274-104	Bolt - Hx Soc Button HD	1	
73	<b>R302-60</b>	302-60	Zerk - Grease 90 Deg.	1	
74	<b>R76-8640</b>	76-8640	Stud - Traction	1	
75	<b>R3-6498</b>	3--6498, 3-6498, 47-8270	Washer - Thrust	1	
76	<b>R104-0422</b>	104-0422	Neutral Arm Assy	1	
77	<b>R99-3594-03</b>	99-3594-03	Lever - Pump	1	
78	<b>R63-9750</b>	63-9750, 64-9750	Mount - Rubber	3	
80	<b>R340-8</b>	340-8	Adapter	1	
82	<b>R95-8736</b>	95-8736	Spacer	1	
83	<b>R99-3598-03</b>	120-5566, 99-3598-03	Hub Assy	1	

All original equipment manufacturers names and part numbers are used for identification purposes only, and we are in no way implying that our products are original equipment parts. Prices subject to change without notice.



# Replaces Toro Reelmaster 3100-D Parts

*Traction Unit - Model 03201*

*Hydrostat & Neutral Arm*



Item No	R&R Part No.	OEM Part No.	Description	Qty Req	Order Quantity
84	<b>R400112</b>	321-8	Bolt - Hex HD 1/4-20 x 1-1/4	1	
85	<b>R24M7139</b>	24M7139, 3256-16, 33093-00, 43-5930	Washer - Flat 6mm	2	
86	<b>R2411-41</b>	2411-41	Rod End - Ball Joint	1	
87	<b>R3256-22</b>	24-9-BD, 3-1032, 3256-1, 3256-22, 93-0954, 93-0989	Washer - Flat 1/4 Yellow	1	
88	<b>R301504</b>	2296-42, 301504, 32127-24, 32128-33, 32146-17, 3296-16, 3296-42, 3296-42 , 915661P	Locknut - ESNA 1/4-20	1	
89	<b>R88-7200</b>	88-7200	Washer - Flat	1	
90	<b>R3210-6</b>	3210-6	Bolt - Hex HD	1	
91	<b>R2844</b>	2844	Washer	3	
92	<b>R150776</b>	95-3857	Bolt - Button HD Soc CS 3/8-16 x 1-1/2	3	
93	<b>R94-1369</b>	94-1369	Spring - Extension	1	

All original equipment manufacturers names and part numbers are used for identification purposes only, and we are in no way implying that our products are original equipment parts. Prices subject to change without notice.