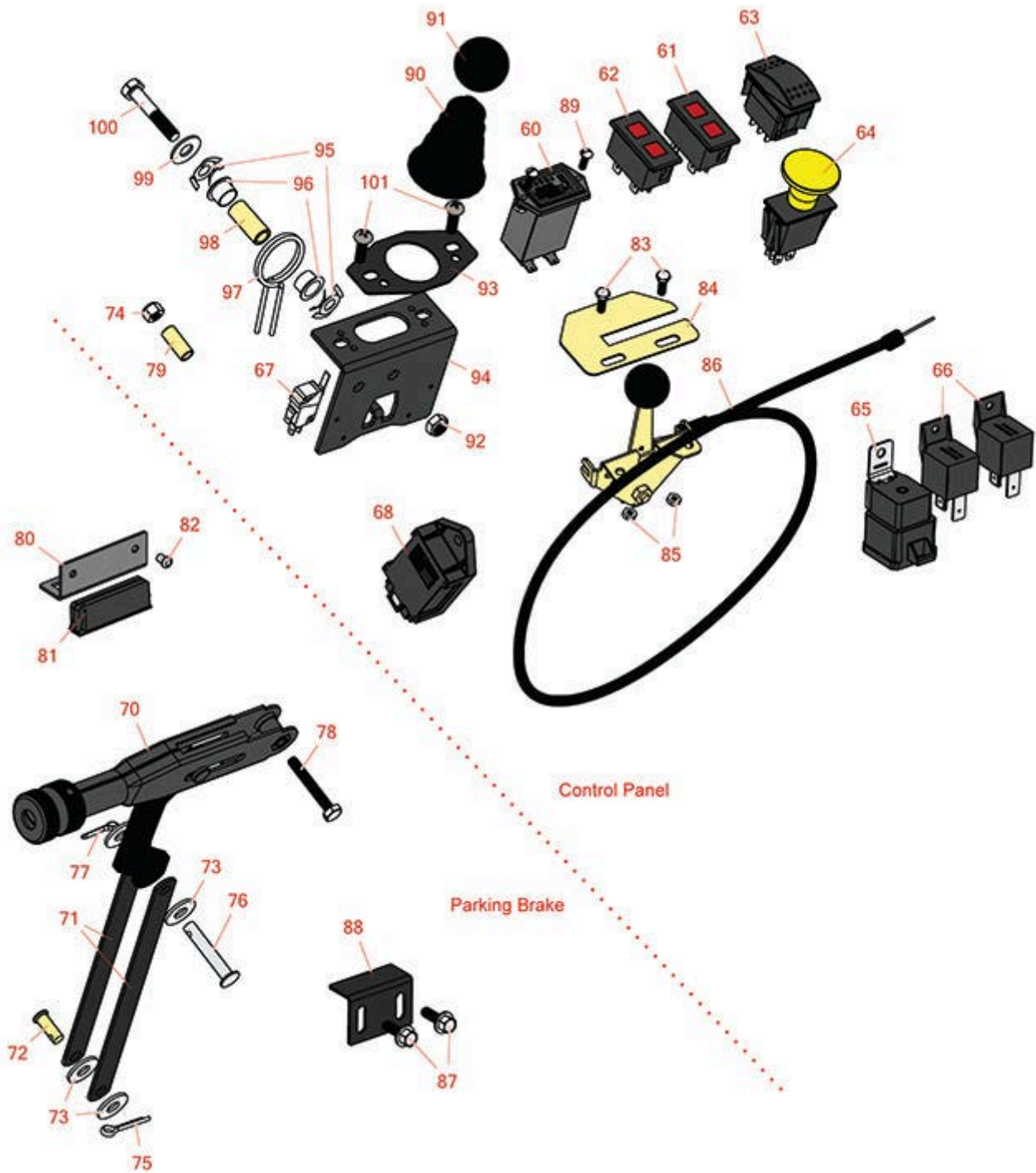




Replaces Toro Reelmaster 3575-D Parts

Traction Unit
Control Panel



All original equipment manufacturers names and part numbers are used for identification purposes only, and we are in no way implying that our products are original equipment parts. Prices subject to change without notice.



Replaces Toro Reelmaster 3575-D Parts

Traction Unit
Control Panel



Item No	R&R Part No.	OEM Part No.	Description	Qty Req	Order Quantity
Gauges and Controls					
60	R75-6820	75-6820	Meter - Hour - Quartz	1	
61	R100-8071	100-8071	Lamp - Warning	1	
62	R100-8070	100-8070	Lamp - Warning	1	
63	R95-8999	95-8999	Switch - Headlight	1	
64	R93-9999	93-9999	Switch - Pto	1	
65	R99-7430	99-7430	Relay - 30 Amp	1	
66	R99-7435	99-7435	Relay - 70 Amp	2	
67	R108-6496	108-6496	Micro Switch w/Boot	2	
68	RX1709565660	98-7611, 99-3463, 99-7611	Kubota Controller	1	
Other Parts Available					
70	R104-4817	104-4817	Lever - Brake	1	
71	R104-4628-03	104-4628-03	Link - Parking Brake	2	
72	R283-62	283-62	Pin - Clevis 5/16 x 3/4	1	
73	R453009	01-166-0400, 24-10-BD, 24-9-AD, 32-9650, 3256-2, 3256-23, 3256-3, 3256-67, 3290-217, 3556-3, 4-2390, 7-0152	Washer - Flat 5/16 SAE	2	

All original equipment manufacturers names and part numbers are used for identification purposes only, and we are in no way implying that our products are original equipment parts. Prices subject to change without notice.



Replaces Toro Reelmaster 3575-D Parts

Traction Unit
Control Panel



Item No	R&R Part No.	OEM Part No.	Description	Qty Req	Order Quantity
74	R301504	2296-42, 301504, 32127-24, 32128-33, 32146-17, 3296-16, 3296-42, 3296-42 , 915661P	Locknut - ESNA 1/4-20	1	
75	R3272-10	01-151-0120, 105-7512, 3272-10, N/A	Pin - Cotter 1/8 x 3/4	1	
76	R94-3829	94-3829	Pin - Clevis	1	
77	R1023-4	01-151-0150, 1023-4, 19-6220, 214-14, 215-54, 28-9-D, 3272-4, 3272-6, 513567, 932008P	Pin - Cotter 3/32 x 3/4	1	
78	R400118	321-10, 400118	Bolt - Hex HD 1/4-20 x 1-3/4 GR5	1	
79	R87-4710	87-4710	Spacer - Parking Brake	1	
80	R95-8763	95-8763	Bracket - Hold Down	2	
81	R58-4250	58-4250, 99-3497	Catch - Magnetic	2	
82	R3269-5	3269-5	Rivet - Pop	4	
83	R3290-134	3290-134	Screw - 10-24x5/8 Hh Ms	2	
84	R104-0421	104-0421	Plate - Throttle Stop	1	
85	R3290-148	3290-148	Nut - 10-24 Fl Lock	2	

All original equipment manufacturers names and part numbers are used for identification purposes only, and we are in no way implying that our products are original equipment parts. Prices subject to change without notice.



Replaces Toro Reelmaster 3575-D Parts

*Traction Unit
Control Panel*



Item No	R&R Part No.	OEM Part No.	Description	Qty Req	Order Quantity
86	R110-8795	110-8759, 110-8795	Cable - Throttle	1	
87	R32144-10	32140-81, 32144-10, 32144-3, 34-140-AMVD	Bolt - 1/4-20 x 3/4 Serrated Hx Wshr	4	
88	R95-8765	95-8765	Bracket - Magnet Strike	2	
89	R32144-18	32144-18	Screw - Hex HD	2	
90	R93-5961	93-5961	Dust Guard - Shifter	1	
91	R233-42	1-603175, 120-9752, 233-42, 233-47	Knob	1	
92	R3296-29	1-804256, 3290-357, 3296-29, 915662P	Locknut - 5/16-18 ESNA	1	
93	R112-9181	106-4188-03, 112-9181	Plate-Boot	1	
94	R115-5357-03	115-5357-03	Bracket - Joystick	1	
95	R106-4193	106-4193	Washer - Finger, Spr	2	
96	R93-5547	93-5547	Bushing-Nylon	2	
97	R105-8289	105-8289, 93-5509	Spring-Torsion	1	
98	R106-4192	106-4192	Spacer	1	

All original equipment manufacturers names and part numbers are used for identification purposes only, and we are in no way implying that our products are original equipment parts. Prices subject to change without notice.



Replaces Toro Reelmaster 3575-D Parts

*Traction Unit
Control Panel*



Item No	R&R Part No.	OEM Part No.	Description	Qty Req	Order Quantity
99	R453011	01-166-0100, 01-166-0120, 01-166-0270, 01-166-0500, 01-166-0600, 01-166-0620, 132-4593, 2356-3, 237-12, 24-10-AD, 24-11-AD, 24-11-BD, 24-12-AD, 24-12-BD, 30-9310, 32-8190, 3256-24, 3256-3, 3256-36, 3256-4, 453011, 47-9950, 48-9220, 513458, 7-0052	Washer - Flat 3/8 SAE Y/Zinc	1	
100	R19H3130	322-9, 3223-5	Bolt - Hex HD 5/16-18 x 1-3/4	1	
101	R3258-166	3258-166	Screw-Ph Rnd HD	2	

All original equipment manufacturers names and part numbers are used for identification purposes only, and we are in no way implying that our products are original equipment parts. Prices subject to change without notice.