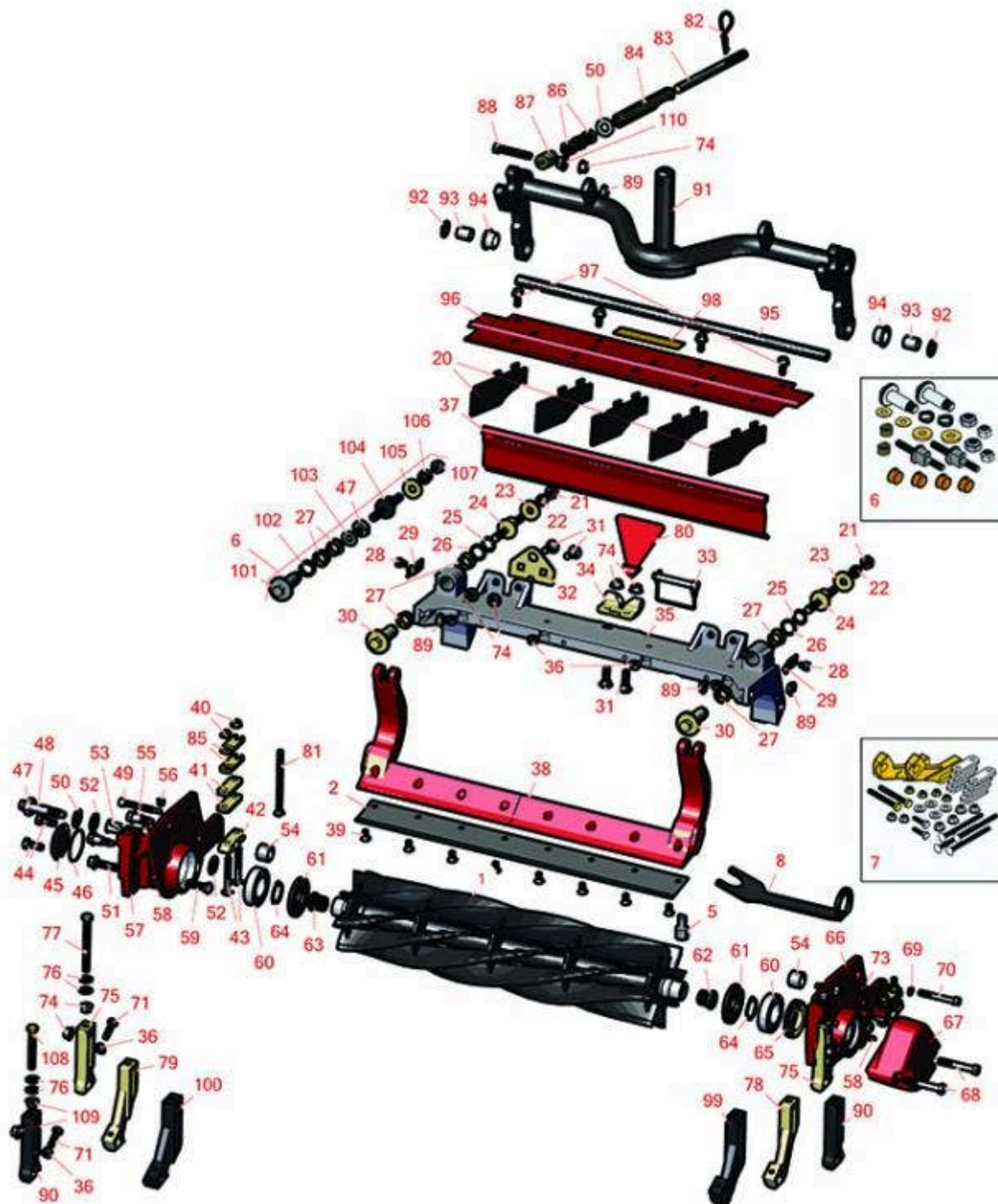




# Replaces Toro Reelmaster 5210-D Parts

DPA Cutting Unit with 5" Reel - Model 03661, 03694 & 03695

Reel & Bedknife



All original equipment manufacturers names and part numbers are used for identification purposes only, and we are in no way implying that our products are original equipment parts. Prices subject to change without notice.



# Replaces Toro Reelmaster 5210-D Parts

DPA Cutting Unit with 5" Reel - Model 03661, 03694 & 03695

Reel & Bedknife



Item No	R&R Part No.	OEM Part No.	Description	Qty Req	Order Quantity
---------	--------------	--------------	-------------	---------	----------------

## R&R Reels, Lifetime Guaranteed

1	<b>R108-9070</b>	108-9070	Reel - 5 Blade 22x5	1	
---	------------------	----------	---------------------	---	--

*Detail Description: R&R Reel blades are manufactured from high carbon-boron alloy steel and then hardened to RC46-49 to match the temper of our bedknives and original equipment bedknives. All R&R Reels are cylindrically ground on bearing surfaces and then relief ground. Reels are then precision computer balanced for extended bearing and reel life. R&R Products Reels are guaranteed against defects in material and workmanship for the life of the reel under normal use.:*

1	<b>R127-2070</b>	127-2070	Reel - 5 Blade Radial 22x5	1	
---	------------------	----------	----------------------------	---	--

*Detail Description: R&R Reel blades are manufactured from high carbon-boron alloy steel and then hardened to RC46-49 to match the temper of our bedknives and original equipment bedknives. All R&R Reels are cylindrically ground on bearing surfaces and then relief ground. Reels are then precision computer balanced for extended bearing and reel life. R&R Products Reels are guaranteed against defects in material and workmanship for the life of the reel under normal use.:*

1	<b>R137-8421</b>	137-8421	Reel - 5 Blade Razor Series w/Bearings and Seals 22x5	1	
---	------------------	----------	---	---	--

*Detail Description: R&R Razor Reels are manufactured from a special high alloy steel and then hardened to RC48-51 to match the temper of our Razor bedknives and original equipment premium series bedknives. All R&R Reels are cylindrically ground on bearing surfaces, relief ground and precision computer balanced for extended bearing and reel life. R&R Products Reels are guaranteed against defects in material and workmanship for the life of the reel under normal use. You can expect up to double the life from Razor reels over standard reels.:*

1	<b>R108-9071</b>	108-9071	Reel - 8 Blade 22x5	1	
---	------------------	----------	---------------------	---	--

*Detail Description: R&R Reel blades are manufactured from high carbon-boron alloy steel and then hardened to RC46-49 to match the temper of our bedknives and original equipment bedknives. All R&R Reels are cylindrically ground on bearing surfaces and then relief ground. Reels are then precision computer balanced for extended bearing and reel life. R&R Products Reels are guaranteed against defects in material and workmanship for the life of the reel under normal use.:*

1	<b>R127-2065</b>	127-2065	Reel - 8 Blade Radial 22x5	1	
---	------------------	----------	----------------------------	---	--

All original equipment manufacturers names and part numbers are used for identification purposes only, and we are in no way implying that our products are original equipment parts. Prices subject to change without notice.



# Replaces Toro Reelmaster 5210-D Parts

DPA Cutting Unit with 5" Reel - Model 03661, 03694 & 03695

Reel & Bedknife



Item No	R&R Part No.	OEM Part No.	Description	Qty Req	Order Quantity
<i>Detail Description: R&amp;R Reel blades are manufactured from high carbon-boron alloy steel and then hardened to RC46-49 to match the temper of our bedknives and original equipment bedknives. All R&amp;R Reels are cylindrically ground on bearing surfaces and then relief ground. Reels are then precision computer balanced for extended bearing and reel life. R&amp;R Products Reels are guaranteed against defects in material and workmanship for the life of the reel under normal use.:</i>					
1	<b>R133-8201</b>	133-8201	Reel - 8 Blade Razor Series Radial 22x5	1	
<i>Detail Description: R&amp;R Razor Reels are manufactured from a special high alloy steel and then hardened to RC48-51 to match the temper of our Razor bedknives and original equipment premium series bedknives. All R&amp;R Reels are cylindrically ground on bearing surfaces, relief ground and precision computer balanced for extended bearing and reel life. R&amp;R Products Reels are guaranteed against defects in material and workmanship for the life of the reel under normal use. You can expect up to double the life from Razor reels over standard reels.:</i>					
1	<b>R137-8422</b>	137-8422	Reel - 8 Blade Razor Series Radial w/Bearings and Seals 22x5	1	
<i>Detail Description: R&amp;R Razor Reels are manufactured from a special high alloy steel and then hardened to RC48-51 to match the temper of our Razor bedknives and original equipment premium series bedknives. All R&amp;R Reels are cylindrically ground on bearing surfaces, relief ground and precision computer balanced for extended bearing and reel life. R&amp;R Products Reels are guaranteed against defects in material and workmanship for the life of the reel under normal use. You can expect up to double the life from Razor reels over standard reels.:</i>					
1	<b>R137-8417</b>	137-8417	Reel - 11 Blade w/Bearings and Seals 22x5	1	
<i>Detail Description: R&amp;R Reel blades are expertly crafted from premium high carbon-boron alloy steel, heat-treated to perfectly complement both R&amp;R and OEM bedknives. Each reel undergoes precision cylindrical grinding on bearing surfaces, followed by relief grinding for optimal performance. Advanced computer balancing ensures extended reel and bearing life. Backed by our lifetime guarantee against defects in materials and craftsmanship under normal use, R&amp;R Reels deliver unmatched durability and cutting precision you can trust.:</i>					
1	<b>R127-2066</b>	117-3793, 127-2066	Reel - 11 Blade Radial 22x5	1	

All original equipment manufacturers names and part numbers are used for identification purposes only, and we are in no way implying that our products are original equipment parts. Prices subject to change without notice.



# Replaces Toro Reelmaster 5210-D Parts

DPA Cutting Unit with 5" Reel - Model 03661, 03694 & 03695

Reel & Bedknife



Item No	R&R Part No.	OEM Part No.	Description	Qty Req	Order Quantity
---------	--------------	--------------	-------------	---------	----------------

*Detail Description: R&R Reel blades are manufactured from high carbon-boron alloy steel and then hardened to RC46-49 to match the temper of our bedknives and original equipment bedknives. All R&R Reels are cylindrically ground on bearing surfaces and then relief ground. Reels are then precision computer balanced for extended bearing and reel life. R&R Products Reels are guaranteed against defects in material and workmanship for the life of the reel under normal use.:*

1	<b>R133-8203</b>	133-8203	Reel - 11 Blade Razor Series Forward Swept 22x5	1	
---	------------------	----------	---	---	--

*Detail Description: R&R Razor Reels are manufactured from a special high alloy steel and then hardened to RC48-51 to match the temper of our Razor bedknives and original equipment premium series bedknives. All R&R Reels are cylindrically ground on bearing surfaces, relief ground and precision computer balanced for extended bearing and reel life. R&R Products Reels are guaranteed against defects in material and workmanship for the life of the reel under normal use. You can expect up to double the life from Razor reels over standard reels.:*

1	<b>R137-8423</b>	137-8423	Reel - 11 Blade Razor Series Forward Swept w/Bearings and Seals 22x5	1	
---	------------------	----------	--	---	--

*Detail Description: R&R Razor Reels are manufactured from a special high alloy steel and then hardened to RC48-51 to match the temper of our Razor bedknives and original equipment premium series bedknives. All R&R Reels are cylindrically ground on bearing surfaces, relief ground and precision computer balanced for extended bearing and reel life. R&R Products Reels are guaranteed against defects in material and workmanship for the life of the reel under normal use. You can expect up to double the life from Razor reels over standard reels.:*

## R&R Bedknives, Lifetime Guaranteed

2	<b>R110-4084</b>	110-4084	Bedknife - Low Cut	1	
---	------------------	----------	--------------------	---	--

*Detail Description: R&R Bedknives are manufactured from high carbon-boron alloy steel and then hardened to RC46-49 to match the temper of our reel blades and original equipment reels. Bedknives are surface ground on the top and front edge and straightened three times before being packaged with oil for rust prevention. All R&R Bedknives now have an increased front edge grind for added life. All R&R Bedknives are guaranteed against defects in material and workmanship under normal use for the life of the part.:*

2	<b>R108-9096</b>	108-9096	Bedknife - Standard	1	
---	------------------	----------	---------------------	---	--

All original equipment manufacturers names and part numbers are used for identification purposes only, and we are in no way implying that our products are original equipment parts. Prices subject to change without notice.





# Replaces Toro Reelmaster 5210-D Parts

DPA Cutting Unit with 5" Reel - Model 03661, 03694 &

03695

Reel & Bedknife



Item No	R&R Part No.	OEM Part No.	Description	Qty Req	Order Quantity
---------	--------------	--------------	-------------	---------	----------------

*Detail Description: R&R Bedknives are manufactured from high carbon-boron alloy steel and then hardened to RC46-49 to match the temper of our reel blades and original equipment reels. Bedknives are surface ground on the top and front edge and straightened three times before being packaged with oil for rust prevention. All R&R Bedknives now have an increased front edge grind for added life. All R&R Bedknives are guaranteed against defects in material and workmanship under normal use for the life of the part.:*

2	<b>R110-4074</b>	110-4074	Bedknife - High Cut	1
---	------------------	----------	---------------------	---

*Detail Description: R&R Bedknives are manufactured from high carbon-boron alloy steel and then hardened to RC46-49 to match the temper of our reel blades and original equipment reels. Bedknives are surface ground on the top and front edge and straightened three times before being packaged with oil for rust prevention. All R&R Bedknives now have an increased front edge grind for added life. All R&R Bedknives are guaranteed against defects in material and workmanship under normal use for the life of the part.:*

2	<b>R120-1640</b>	120-1640	Bedknife - Low Cut Extended	1
---	------------------	----------	-----------------------------	---

*Detail Description: R&R Bedknives are manufactured from high carbon-boron alloy steel and then hardened to RC46-49 to match the temper of our reel blades and original equipment reels. Bedknives are surface ground on the top and front edge and straightened three times before being packaged with oil for rust prevention. All R&R Bedknives now have an increased front edge grind for added life. All R&R Bedknives are guaranteed against defects in material and workmanship under normal use for the life of the part.:*

## R&R Razor Tool Steel Bedknives, Lifetime Guaranteed

2	<b>R108-9095</b>	108-9095, 137-0833	Bedknife - Razor Tool Steel - 22 High Cut	1
---	------------------	-----------------------	--	---

*Detail Description: R&R Razor bedknives are manufactured from premium alloy tool steel steel and then hardened to RC48-51 to match the temper of our Razor reel blades and original equipment premium series reels. Bedknives are surface ground on the top and front edge and specially packaged for rust prevention. All R&R Bedknives now have an increased front edge grind for added life. All R&R Bedknives are guaranteed against defects in material and workmanship under normal use for the life of the part. You can expect up to double the life over standard bedknives.:*

2	<b>R119-4280</b>	119-4280	Bedknife - Razor Tool Steel - 22 x 3/8 Extended	1
---	------------------	----------	--	---

All original equipment manufacturers names and part numbers are used for identification purposes only, and we are in no way implying that our products are original equipment parts. Prices subject to change without notice.



# Replaces Toro Reelmaster 5210-D Parts

DPA Cutting Unit with 5" Reel - Model 03661, 03694 & 03695

Reel & Bedknife



Item No	R&R Part No.	OEM Part No.	Description	Qty Req	Order Quantity
---------	--------------	--------------	-------------	---------	----------------

*Detail Description: R&R Razor bedknives are manufactured from premium alloy tool steel steel and then hardened to RC48-51 to match the temper of our Razor reel blades and original equipment premium series reels. Bedknives are surface ground on the top and front edge and specially packaged for rust prevention. All R&R Bedknives now have an increased front edge grind for added life. All R&R Bedknives are guaranteed against defects in material and workmanship under normal use for the life of the part. You can expect up to double the life over standard bedknives.:*

2	<b>R137-0832</b>	125-2771, 127-7132, 137-0832	Bedknife - Razor Tool Steel - 3/8 x 22 Lowcut	1	
---	------------------	------------------------------------	--	---	--

## Overhaul Kits and Service Tools

5	<b>R51-0880</b>	51-0880	Bedknife Screw Driver Tool	0	
---	-----------------	---------	----------------------------	---	--

*Detail Description: Easily install and remove bed knife screws with the help of a ratchet with 3/8" drive. Tool manufactured with hardened alloy steel.:*

6	<b>R120-7230</b>	120-7230	Overhaul Kit - Fits DPA Units	0	
---	------------------	----------	-------------------------------	---	--

*Detail Description: Incl 2 ea.: R108-0015, R115-7039, R119-4155, R120-5116, R120-5118, R120-5120, R3296-33, R3296-48 & 4 ea: R106-5344:*

7	<b>R110-9600</b>	110-9600	High HOC Kit	1	
---	------------------	----------	--------------	---	--

*Detail Description: Includes 1 ea.: R120-0404, R120-0405 & 2 ea: R112-7451, R322-16, R445722 & 4 ea.: R106-9758, R104-8300, R453011, R104-8301 & 8 ea: R106-3925:*

8	<b>R117-0975</b>	117-0975	Tool- Reel Bearing Installation	1	
---	------------------	----------	---------------------------------	---	--

## Other Parts Available

20	<b>R110-1706</b>	110-1706	Deflector	5	
----	------------------	----------	-----------	---	--

21	<b>R33025-00</b>	32025-00, 33025-00	Locknut - 10mm x 1.5 Jam	2	
----	------------------	-----------------------	--------------------------	---	--

22	<b>R99-3755</b>	99-3755	Spring - Bed Bar Adjusting	2	
----	-----------------	---------	----------------------------	---	--

23	<b>R99-2098</b>	99-2098	Washer - Bed Bar Adjuster	2	
----	-----------------	---------	---------------------------	---	--

All original equipment manufacturers names and part numbers are used for identification purposes only, and we are in no way implying that our products are original equipment parts. Prices subject to change without notice.



## Replaces Toro Reelmaster 5210-D Parts

DPA Cutting Unit with 5" Reel - Model 03661, 03694 &  
03695  
Reel & Bedknife



Item No	R&R Part No.	OEM Part No.	Description	Qty Req	Order Quantity
24	R99-2096	99-2096	Screw - Bed Bar Adjustment - M10 Thrd 1 End	2	
25	R32120-93	32120-93	Snap Ring - HD	2	
26	R106-5335	106-5335	Wave Washer - Reel Adjusting	2	
27	R106-5344	106-5344	Bushing - Flanged and Keyed	4	
28	R114-9396	114-9396, 119-4067	Bolt - Hex HD 5/16-18 x 3/8	2	
28	R322-26	322-26	Bolt - Hx HD 5/16-18 x 3/8	2	
29	R99-2097	99-2097	Detent - Bed Bar Adjuster	2	
30	R106-5363	106-5363	Shaft - Adjusting - Bed Bar - Stainless	2	
31	R3231-25	01-173-0610, 30-9970, 3231-25, 3231-3, 900064P	Bolt - Carriage 3/8-16 x 1-1/4	4	
32	R110-4069	110-4069	Bracket	1	
33	R107-7400	107-7400	Pin - Lynch	1	
34	R110-4058	110-4058	Bracket - Chain	1	
35	R107-2951	107-2951	Frame	1	
36	R445722	30-8980, 32128-2, 32128-20, 32128-20	Nut - Serrated Washer	4	
37	R107-7777-01	107-7777-01	Grass Shield Assy - Rear	1	
38	R105-8095-01	105-8095-01	Bed Bar - Fits OEM Units Only	1	
38	R150905		Bed Bar - Fits R&R Units Only	1	

All original equipment manufacturers names and part numbers are used for identification purposes only, and we are in no way implying that our products are original equipment parts. Prices subject to change without notice.



## Replaces Toro Reelmaster 5210-D Parts

DPA Cutting Unit with 5" Reel - Model 03661, 03694 &  
03695  
Reel & Bedknife



Item No	R&R Part No.	OEM Part No.	Description	Qty Req	Order Quantity
39	R150476	3-3816, 3-6462, 57-4910	Screw - Bedknife 5/16-18 x 5/8	8	
40	R104-8300	104-8300, 104-8300 , 119-4041	Locknut - 5/16-18 Flanged Y/Zinc	4	
41	R106-3925	106-3925	Shim - 1/4 - Rear Roller HOC	8	
42	R106-3924	106-3924	Bracket - Rear Roller	2	
43	RP17609-2	106-9758, 3230-7	Bolt - Carriage 5/16-18 x 1-1/2	4	
44	R3234-11	3234-11	Bolt - Hex Washer HD	2	
45	R150485	2410-30	Cap - Protective Bearing Housing	1	
46	R237-68	237-68	O-Ring	2	
47	R3296-33	3296-33	Locknut - 5/8-18 ESNA Jam	2	
48	R106-9623	106-9623	Bolt - Bedbar	2	
49	R107-7773	107-7773	Bolt - Soc HD Cap 5/16-18 x 2-1/2	1	
50	R453017	01-166-0050, 01-166-0240, 01-166-0800, 24-13-AD, 24-14-AD, 32-8110, 3256-26, 3256-6, 453017, 69-8980, 87-7270	Washer - Flat 1/2	2	
50	R455012	3256-26, 41-8440	Washer - Flat 1/2 x 3/4	1	

All original equipment manufacturers names and part numbers are used for identification purposes only, and we are in no way implying that our products are original equipment parts. Prices subject to change without notice.





## Replaces Toro Reelmaster 5210-D Parts

DPA Cutting Unit with 5" Reel - Model 03661, 03694 & 03695

Reel & Bedknife



Item No	R&R Part No.	OEM Part No.	Description	Qty Req	Order Quantity
50	<b>R87-7270-01</b>	87-7270	Washer - Flat 1/2	1	
51	<b>R3234-19</b>	3234-19	Bolt - Hex Washer 3/8-16x1-3/4	2	
52	<b>R61-1950</b>	61-1950	Washer - Nylon - Bed Bar	4	
53	<b>R56-9520</b>	56-9520	Bushing - Nyliner	2	
54	<b>R106-9618</b>	106-9618	Bushing - Rubber	2	
55	<b>R107-2979</b>	107-2979	Bolt - Shoulder	4	
56	<b>R170714</b>	302-34, 302-39, 62-3520	Fitting - Pressure Relief	2	
57	<b>R108-9081</b>	108-9081	Side Plate - RH - Fits OEM Units Only	1	
57	<b>R150901</b>		Side Plate - RH - Fits R&R Units Only	1	
58	<b>R302-5</b>	21-6010, 302-11, 302-37, 302-47, 302-5, 302-57, 302-58, 302-6, 31-0300, 32-9660, 60-0800, 62-3880, 92-4181	Fitting - Grease	2	
59	<b>R3231-4</b>	01-157-0440, 01-173-0612, 3231-4	Bolt - Carriage 3/8-16 x 1-1/2	2	
60	<b>R93-2489</b>	93-2489	Bearing - Reel	2	

All original equipment manufacturers names and part numbers are used for identification purposes only, and we are in no way implying that our products are original equipment parts. Prices subject to change without notice.



## Replaces Toro Reelmaster 5210-D Parts

DPA Cutting Unit with 5" Reel - Model 03661, 03694 & 03695

Reel & Bedknife



Item No	R&R Part No.	OEM Part No.	Description	Qty Req	Order Quantity
61	R107-4028	105-6757, 107-4028	Seal - Grease	2	
62	R105-8075	105-8075	Insert - Threaded - RH - 8 Tooth	1	
63	R105-8076	105-8076	Insert - Threaded - LH - 8 Tooth	1	
64	R92-2601	92-2601	Snap Ring	2	
65	R107-2954	107-2954	Nut - Bearing Adjuster	1	
66	R108-9080	108-9080	Side Plate - LH - Fits OEM Units Only	1	
66	R150900		Side Plate - LH - Fits R&R Units Only	1	
67	R108-9090-01	108-9090-01	Weight	1	
68	R101526	01-150-0970, 01-178-0620, 20-53-AGD, 321-11, 3224-8, 323-11, 323-12, 323-31, 323-4, 323-47	Bolt - Hex HD 3/8-16 x 2-1/2 GR5	2	
69	R3256-74	3256-74	Washer - Flat	1	
70	R322-14	01-150-0830, 01-178-0524, 30-8900, 322-14	Bolt - Hex HD 5/16-18 x 3 GR5	1	
71	R322-16	322-16, Apr-00	Bolt - Hex HD 5/16-18 x 1-1/8	2	
73	R106-4214	106-4214	Set Screw - 1/4-20 x 1/2 Cone Point	1	

All original equipment manufacturers names and part numbers are used for identification purposes only, and we are in no way implying that our products are original equipment parts. Prices subject to change without notice.



## Replaces Toro Reelmaster 5210-D Parts

DPA Cutting Unit with 5" Reel - Model 03661, 03694 & 03695

Reel & Bedknife



Item No	R&R Part No.	OEM Part No.	Description	Qty Req	Order Quantity
74	R32128-19	104-8301, 104-9301, 32128-19	Locknut - 3/8-16 Flanged Top Lock	4	
75	R107-2952	107-2952	Bracket - Front Roller	2	
76	R453011	01-166-0100, 01-166-0120, 01-166-0270, 01-166-0500, 01-166-0600, 01-166-0620, 132-4593, 2356-3, 237-12, 24-10-AD, 24-11-AD, 24-11-BD, 24-12-AD, 24-12-BD, 30-9310, 32-8190, 3256-24, 3256-3, 3256-36, 3256-4, 453011, 47-9950, 48-9220, 513458, 7-0052	Washer - Flat 3/8 SAE Y/Zinc	4	
77	R107-4026	107-4026	Bolt - Hex Tap 3/8-16 x 3-3/4	2	
78	R108-4213	108-4213	Bracket- HOC - LH - Groomer	1	
79	R108-4214	108-4214	Bracket-HOC - RH - Groomer	1	
80	R110-4088-03	110-4088-03, 119-8010-03	Kickstand	1	
81	R3230-30	3230-30	Bolt - Carriage 5/16x4 1/2	4	
82	R92-2762	92-2762	Pin - Snap	1	

All original equipment manufacturers names and part numbers are used for identification purposes only, and we are in no way implying that our products are original equipment parts. Prices subject to change without notice.



## Replaces Toro Reelmaster 5210-D Parts

DPA Cutting Unit with 5" Reel - Model 03661, 03694 &  
03695  
Reel & Bedknife



Item No	R&R Part No.	OEM Part No.	Description	Qty Req	Order Quantity
83	<b>R107-2970</b>	107-2970	Rod - Spring	1	
84	<b>R108-9084</b>	108-9084	Spring	1	
85	<b>R119-0626</b>	119-0626	Shim - Roller - 1/4 in - Slotted	8	
86	<b>R443818</b>	01-191-0813, 3218-18, 3218-5	Nut - 1/2-13 Hex Jam Zinc	3	
87	<b>R99-8662</b>	99-8662	Tube - Spring	1	
88	<b>R104-3396</b>	104-3396	Bolt - Hex HD 3/8-16 x 2-1/4	1	
89	<b>R32128-43</b>	30-8990, 32128-43, 3290-357	Nut - Flanged Whiz - 3/8-16	5	
89	<b>R3296-39</b>	32127-25, 32128-36, 3290-357, 3296-17, 3296-22, 3296-39, 915663P, 99-7443	Locknut - 3/8-16 Nylon	5	
90	<b>R125-2796</b>	125-2796	Bracket- Front HOC	2	
<i>Detail Description: Fits 2013 &amp; Newer:</i>					
91	<b>R106-3937</b>	106-3937	Carrier Frame Assy	1	
92	<b>R67-9410</b>	67-9410	Washer - Clevis Pin	1	
93	<b>R108-4279</b>	108-4279	Spacer - Frame	2	
94	<b>R93-2877</b>	93-2877	Bushing - Flanged	2	
95	<b>R108-4284</b>	108-4284	Shaft - Support	1	
96	<b>R107-2996</b>	107-2996	Grass Shield - Front	1	

All original equipment manufacturers names and part numbers are used for identification purposes only, and we are in no way implying that our products are original equipment parts. Prices subject to change without notice.



## Replaces Toro Reelmaster 5210-D Parts

DPA Cutting Unit with 5" Reel - Model 03661, 03694 & 03695

Reel & Bedknife



Item No	R&R Part No.	OEM Part No.	Description	Qty Req	Order Quantity
97	<b>R3234-5</b>	3234-5, 62-3310	Bolt - 5/16-18x3/4 Hx Ser Was HD	4	
98	<b>R93-6688</b>	93-6688	Decal - Warning	1	
99	<b>R120-0404</b>	120-0404	Bracket- High HOC - LH	1	
<i>Detail Description: Fits 2011 &amp; Newer:</i>					
100	<b>R120-0405</b>	120-0405	Bracket - High HOC - RH	1	
<i>Detail Description: Fits 2011 &amp; Newer:</i>					
101	<b>R120-5118</b>	120-5118	Shaft - Adjuster	2	
<i>Detail Description: 2012 &amp; Newer:</i>					
102	<b>R120-5116</b>	120-5116	Washer - Wave	2	
103	<b>R108-0015</b>	108-0015	Washer - Flat	2	
104	<b>R115-7039</b>	115-7039	Screw - Adjuster - Bedbar	2	
105	<b>R119-4155</b>	119-4155	Washer - Hardened	2	
106	<b>R120-5120</b>	120-5120	Spring - Compression	2	
107	<b>R3296-48</b>	119-4039, 32146-7, 3296-34, 3296-48	Locknut - 7/16-14 ESNA	2	
108	<b>R112-7451</b>	100-9429, 112-7451	Bolt - Hex Tap 3/8-16 x 2-3/4	2	
109	<b>R104-8301</b>	104-8301, 104-9301, 109-6658, 133-7570	Locknut - 3/8-16 Nylon Flanged	4	
110	<b>R32128-40</b>	32128-40	Nut- 3/8-16 Hx Flange	5	

All original equipment manufacturers names and part numbers are used for identification purposes only, and we are in no way implying that our products are original equipment parts. Prices subject to change without notice.