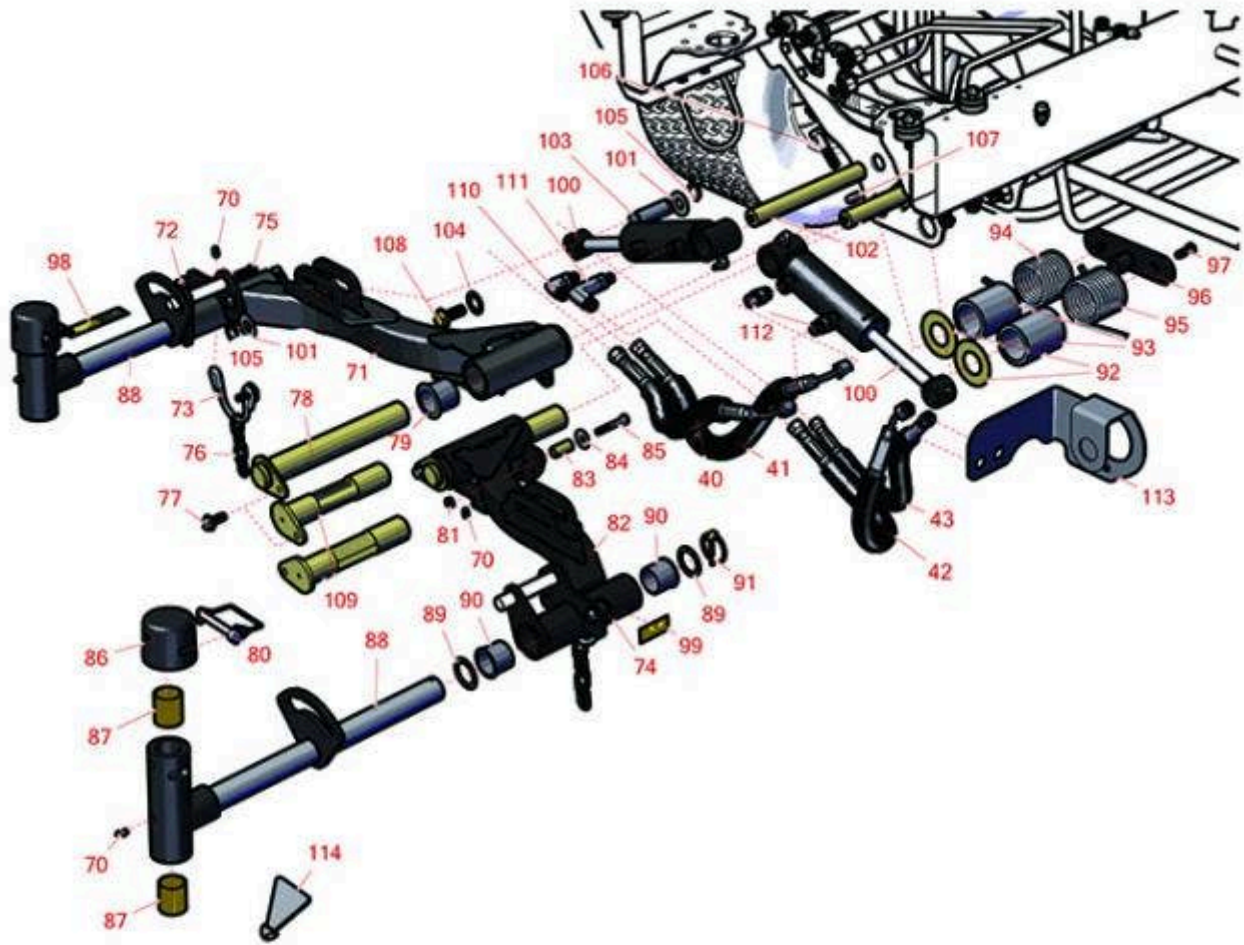




Replaces Toro Reelmaster 5410G Parts

Traction Unit - Models 03608 & 03673

Rear Lift Arm



All original equipment manufacturers names and part numbers are used for identification purposes only, and we are in no way implying that our products are original equipment parts. Prices subject to change without notice.



Replaces Toro Reelmaster 5410G Parts

Traction Unit - Models 03608 & 03673

Rear Lift Arm



| Item No | R&R Part No. | OEM Part No. | Description | Qty Req | Order Quantity |
|------------------------------|------------------|--|--------------------------------|---------|----------------|
| Hoses | | | | | |
| 40 | R110-0930 | 110-0930, 110-2930 | Hydraulic Hose Assy | 1 | |
| 41 | R110-0929 | 110-0929 | Hydraulic Hose Assy | 1 | |
| 42 | R110-8966 | 110-8966 | Hydraulic Hose Assy | 1 | |
| 43 | R110-0931 | 110-0931 | Hydraulic Hose Assy | 1 | |
| Other Parts Available | | | | | |
| 70 | R302-5 | 21-6010, 302-11, 302-37, 302-47, 302-5, 302-57, 302-58, 302-6, 31-0300, 32-9660, 60-0800, 62-3880, 92-4181 | Fitting - Grease | 4 | |
| 71 | R110-0993 | 110-0993 | Lift Arm - No. 3 | 1 | |
| 72 | R104-8301 | 104-8301, 104-9301, 109-6658, 133-7570 | Locknut - 3/8-16 Nylon Flanged | 4 | |
| 73 | R110-0922 | 110-0922 | Hoop - Chain | 2 | |
| 74 | R63-8410 | 53-6380, 63-4810, 63-8410 | Washer - Isolator Bushing | 4 | |

All original equipment manufacturers names and part numbers are used for identification purposes only, and we are in no way implying that our products are original equipment parts. Prices subject to change without notice.



Replaces Toro Reelmaster 5410G Parts

Traction Unit - Models 03608 & 03673

Rear Lift Arm



| Item No | R&R Part No. | OEM Part No. | Description | Qty Req | Order Quantity |
|-----------------------------------|------------------|---|---------------------------------|---------|----------------|
| 75 | R400264 | 01-150-0180, 01-178-0610, 20-48-AD, 20-48-AGD, 32-9160, 3224-3, 323-29, 323-7, 400264, 908035P | Bolt - Hex HD 3/8-16 x 1-1/4 | 4 | |
| 76 | R84-2450 | 84-2450 | Chain - Straight 4 | 2 | |
| <i>Tech Note: Ftis 5210-5410:</i> | | | | | |
| 77 | R32144-14 | 32104-32, 32104-49, 32144-14 | Bolt - Hex Washer 5/16-18 x 5/8 | 2 | |
| 78 | R107-2062 | 107-2062 | Pin Assy | 2 | |
| 79 | R69-6470 | 69-6470 | Bushing - Flanged | 4 | |
| 80 | R107-7400 | 107-7400 | Pin - Lynch | 2 | |
| 81 | R3296-29 | 1-804256, 3290-357, 3296-29, 915662P | Locknut - 5/16-18 ESNA | 2 | |
| 82 | R110-0992 | 110-0992 | Lift Arm - No. 2 | 1 | |
| 83 | R103-0384 | 103-0384 | Spacer | 2 | |
| 84 | R3256-35 | 3256-35 | Washer - Flat | 2 | |
| 85 | R322-10 | 20-30-AD, 24-7180, 322-10, 322-10, 3223-6, 513347 | Bolt - Hex HD 5/16-18 x 2 | 2 | |
| 86 | R107-4027 | 107-4027 | Cap - Pivot Yoke | 2 | |

All original equipment manufacturers names and part numbers are used for identification purposes only, and we are in no way implying that our products are original equipment parts. Prices subject to change without notice.



Replaces Toro Reelmaster 5410G Parts

Traction Unit - Models 03608 & 03673

Rear Lift Arm



| Item No | R&R Part No. | OEM Part No. | Description | Qty Req | Order Quantity |
|---------|---------------------|------------------------|-----------------------------|---------|----------------|
| 87 | R256-254 | 256-254 | Bushing 1-1/8 x 1.375 x 1.5 | 4 | |
| 87 | R121-3187 | 121-3187 | Bushing | 4 | |
| 88 | R107-2052 | 107-2052, 138-1248 | Pivot Yoke Assy | 2 | |
| 89 | R76-2980 | 76-2980 | Washer - Thrust | 4 | |
| 90 | R104-0015 | 104-0015, 104-8339 | Bushing - Flanged | 4 | |
| 91 | R92-1298 | 92-1298 | Pin - Clik | 2 | |
| 92 | R110-5345 | 110-5345 | Washer | 2 | |
| 93 | R110-5339 | 110-5339 | Spacer | 2 | |
| 94 | R99-5608-03 | 99-5608, 99-5608-03 | Spring-Torsion, RH | 1 | |
| 95 | R99-5609-03 | 99-5609, 99-5609-03 | Spring-Torsion, LH | 1 | |
| 96 | R110-8874-03 | 110-8874-03 | Catch Assy | 1 | |
| 97 | R3234-11 | 3234-11 | Bolt - Hex Washer HD | 2 | |
| 98 | R110-9642 | 110-9642 | Decal | 2 | |
| 99 | R93-6696 | 93-6696 | Decal - Warning | 2 | |
| 100 | R119-6988 | 119-6988 | Hydraulic Cylinder | 2 | |

All original equipment manufacturers names and part numbers are used for identification purposes only, and we are in no way implying that our products are original equipment parts. Prices subject to change without notice.



Replaces Toro Reelmaster 5410G Parts

Traction Unit - Models 03608 & 03673

Rear Lift Arm



| Item No | R&R Part No. | OEM Part No. | Description | Qty Req | Order Quantity |
|---------|------------------|---|-----------------------------------|---------|----------------|
| 101 | R453017 | 01-166-0050, 01-166-0240, 01-166-0800, 24-13-AD, 24-14-AD, 32-8110, 3256-26, 3256-6, 453017, 69-8980, 87-7270 | Washer - Flat 1/2 | 2 | |
| 102 | R117-0148 | 117-0148 | Pin - Hyd Cyl | 2 | |
| 103 | R104-0046 | 104-0046 | Pin - Slide - Cylinder | 2 | |
| 104 | R3-6498 | 3--6498, 3-6498, 47-8270 | Washer - Thrust | 4 | |
| 105 | R32120-93 | 32120-93 | Snap Ring - HD | 4 | |
| 106 | R323-9 | 01-150-0190, 01-150-1540, 01-178-0614, 107229, 20-50-AD, 20-50-AGD, 30-9430, 32105-4, 3224-5, 323-9, 513363, 513364, 5377, 908037P | Bolt - Hex HD 3/8-16 x 1-3/4 | 2 | |
| 107 | R3296-59 | 3296-59 | Locknut - 3/8-16 Nylon Jam | 2 | |
| 108 | R3234-38 | 3234-38 | Bolt - Flanged Hex 1/2-13 x 1-1/4 | 2 | |
| 109 | R125-2037 | 125-2037 | Shaft | 2 | |
| 110 | R340-132 | 340-132 | Hydraulic Fitting - 90 Deg | 1 | |

All original equipment manufacturers names and part numbers are used for identification purposes only, and we are in no way implying that our products are original equipment parts. Prices subject to change without notice.



Replaces Toro Reelmaster 5410G Parts

Traction Unit - Models 03608 & 03673

Rear Lift Arm



| Item No | R&R Part No. | OEM Part No. | Description | Qty Req | Order Quantity |
|---------|---------------------|-----------------------------|-------------------------------|---------|----------------|
| 111 | R100-7695 | 100-7695 | Adapter-Hyd | 1 | |
| 112 | R340-92 | 340-92 | Hydraulic Fitting - Striaight | 2 | |
| 113 | R110-0917-01 | 110-0917-01 | Bracket-Bulkhead - LH | 1 | |
| 114 | R110-4088-03 | 110-4088-03, 119-8010-03 | Kickstand | 1 | |

All original equipment manufacturers names and part numbers are used for identification purposes only, and we are in no way implying that our products are original equipment parts. Prices subject to change without notice.