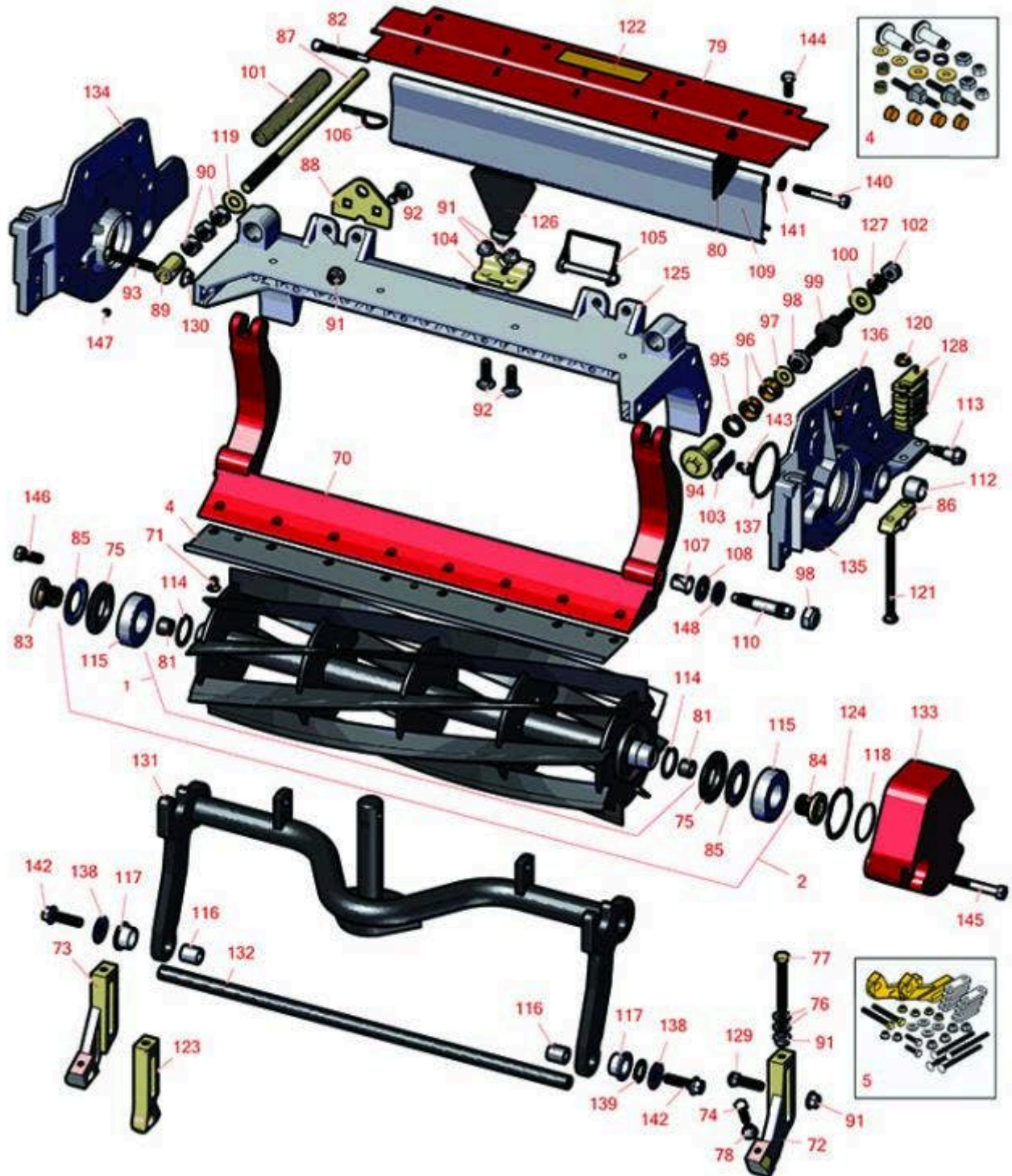




## Replaces Toro Reelmaster 5510-D Parts

DPA Cutting Unit - Models 03638, 03639, 03641 & 03643  
Reel & Bedknife



All original equipment manufacturers names and part numbers are used for identification purposes only, and we are in no way implying that our products are original equipment parts. Prices subject to change without notice.



## Replaces Toro Reelmaster 5510-D Parts

DPA Cutting Unit - Models 03638, 03639, 03641 & 03643  
Reel & Bedknife



Item No	R&R Part No.	OEM Part No.	Description	Qty Req	Order Quantity
---------	--------------	--------------	-------------	---------	----------------

### **R&R Razor Reels, Lifetime Guaranteed**

1	<b>R133-8205</b>	133-8205	Reel - 5 Blade Razor Series Radial Low Drag (RR) 22x7	1	
---	------------------	----------	--	---	--

*Detail Description: R&R Razor Reels are manufactured from a special high alloy steel and then hardened to RC48-51 to match the temper of our Razor bedknives and original equipment premium series bedknives. All R&R Reels are cylindrically ground on bearing surfaces, relief ground and precision computer balanced for extended bearing and reel life. R&R Products Reels are guaranteed against defects in material and workmanship for the life of the reel under normal use. You can expect up to double the life from Razor reels over standard reels.:*

1	<b>R131-6809</b>	131-6809	Reel - 8 Blade Razor Series Forward Swept 22x7	1	
---	------------------	----------	---	---	--

*Detail Description: R&R Razor Reels are manufactured from a special high alloy steel and then hardened to RC48-51 to match the temper of our Razor bedknives and original equipment premium series bedknives. All R&R Reels are cylindrically ground on bearing surfaces, relief ground and precision computer balanced for extended bearing and reel life. R&R Products Reels are guaranteed against defects in material and workmanship for the life of the reel under normal use. You can expect up to double the life from Razor reels over standard reels.:*

1	<b>R131-6801</b>	131-6801	Reel - 11 Blade Razor Series Forward Swept Low Drag 22x7	1	
---	------------------	----------	---	---	--

*Detail Description: R&R Razor Reels are manufactured from a special high alloy steel and then hardened to RC48-51 to match the temper of our Razor bedknives and original equipment premium series bedknives. All R&R Reels are cylindrically ground on bearing surfaces, relief ground and precision computer balanced for extended bearing and reel life. R&R Products Reels are guaranteed against defects in material and workmanship for the life of the reel under normal use. You can expect up to double the life from Razor reels over standard reels.:*

2	<b>R137-8444</b>	137-8444	Reel - 5 Blade Razor Series Radial Low Drag (RR) w/Bearings and Seals 22x7	1	
---	------------------	----------	--	---	--

*Detail Description: R&R Razor Reels are manufactured from a special high alloy steel and then hardened to RC48-51 to match the temper of our Razor bedknives and original equipment premium series bedknives. All R&R Reels are cylindrically ground on bearing surfaces, relief ground and precision computer balanced for extended bearing and reel life. R&R Products Reels are guaranteed against defects in material and workmanship for the life of the reel under normal use. You can expect up to double the life from Razor reels over standard reels.:*

All original equipment manufacturers names and part numbers are used for identification purposes only, and we are in no way implying that our products are original equipment parts. Prices subject to change without notice.



## Replaces Toro Reelmaster 5510-D Parts

DPA Cutting Unit - Models 03638, 03639, 03641 & 03643  
Reel & Bedknife



Item No	R&R Part No.	OEM Part No.	Description	Qty Req	Order Quantity
2	<b>R131-6805</b>	131-6805	Reel - 8 Blade Razor Series Radial Low Drag w/Bearings and Seals 22x7	1	
<i>Detail Description: R&amp;R Razor Reels are manufactured from a special high alloy steel and then hardened to RC48-51 to match the temper of our Razor bedknives and original equipment premium series bedknives. All R&amp;R Reels are cylindrically ground on bearing surfaces, relief ground and precision computer balanced for extended bearing and reel life. R&amp;R Products Reels are guaranteed against defects in material and workmanship for the life of the reel under normal use. You can expect up to double the life from Razor reels over standard reels.:</i>					
2	<b>R137-8445</b>	137-8445	Reel - 8 Blade Razor Series Radial Low Drag (RR) w/Bearings and Seals 22x7	1	
<i>Detail Description: R&amp;R Razor Reels are manufactured from a special high alloy steel and then hardened to RC48-51 to match the temper of our Razor bedknives and original equipment premium series bedknives. All R&amp;R Reels are cylindrically ground on bearing surfaces, relief ground and precision computer balanced for extended bearing and reel life. R&amp;R Products Reels are guaranteed against defects in material and workmanship for the life of the reel under normal use. You can expect up to double the life from Razor reels over standard reels.:</i>					
2	<b>R137-8446</b>	137-8446	Reel - 8 Blade Razor Series Forward Swept Low Drag (Fsr) w/Bearings and Seals 22x7	1	
<i>Detail Description: R&amp;R Razor Reels are manufactured from a special high alloy steel and then hardened to RC48-51 to match the temper of our Razor bedknives and original equipment premium series bedknives. All R&amp;R Reels are cylindrically ground on bearing surfaces, relief ground and precision computer balanced for extended bearing and reel life. R&amp;R Products Reels are guaranteed against defects in material and workmanship for the life of the reel under normal use. You can expect up to double the life from Razor reels over standard reels.:</i>					
2	<b>R137-8447</b>	137-8447	Reel - 11 Blade Razor Series Forward Swept Low Drag (Fsr) w/Bearings and Seals 22x7	1	
<i>Detail Description: R&amp;R Razor Reels are manufactured from a special high alloy steel and then hardened to RC48-51 to match the temper of our Razor bedknives and original equipment premium series bedknives. All R&amp;R Reels are cylindrically ground on bearing surfaces, relief ground and precision computer balanced for extended bearing and reel life. R&amp;R Products Reels are guaranteed against defects in material and workmanship for the life of the reel under normal use. You can expect up to double the life from Razor reels over standard reels.:</i>					

All original equipment manufacturers names and part numbers are used for identification purposes only, and we are in no way implying that our products are original equipment parts. Prices subject to change without notice.



## Replaces Toro Reelmaster 5510-D Parts

DPA Cutting Unit - Models 03638, 03639, 03641 & 03643  
Reel & Bedknife



Item No	R&R Part No.	OEM Part No.	Description	Qty Req	Order Quantity
2	<b>R137-8455</b>	137-8455	Reel - 11 Blade Razor Series Radial (RR) w/Bearings and Seals 22x7	1	

*Detail Description: R&R Razor Reels are manufactured from a special high alloy steel and then hardened to RC48-51 to match the temper of our Razor bedknives and original equipment premium series bedknives. All R&R Reels are cylindrically ground on bearing surfaces, relief ground and precision computer balanced for extended bearing and reel life. R&R Products Reels are guaranteed against defects in material and workmanship for the life of the reel under normal use. You can expect up to double the life from Razor reels over standard reels.:*

### R&R Bedknives, Lifetime Guaranteed

4	<b>R110-4074</b>	110-4074	Bedknife - High Cut	1	
---	------------------	----------	---------------------	---	--

*Detail Description: R&R Bedknives are manufactured from high carbon-boron alloy steel and then hardened to RC46-49 to match the temper of our reel blades and original equipment reels. Bedknives are surface ground on the top and front edge and straightened three times before being packaged with oil for rust prevention. All R&R Bedknives now have an increased front edge grind for added life. All R&R Bedknives are guaranteed against defects in material and workmanship under normal use for the life of the part.:*

4	<b>R108-9096</b>	108-9096	Bedknife - Standard	1	
---	------------------	----------	---------------------	---	--

*Detail Description: R&R Bedknives are manufactured from high carbon-boron alloy steel and then hardened to RC46-49 to match the temper of our reel blades and original equipment reels. Bedknives are surface ground on the top and front edge and straightened three times before being packaged with oil for rust prevention. All R&R Bedknives now have an increased front edge grind for added life. All R&R Bedknives are guaranteed against defects in material and workmanship under normal use for the life of the part.:*

4	<b>R110-4084</b>	110-4084	Bedknife - Low Cut	1	
---	------------------	----------	--------------------	---	--

*Detail Description: R&R Bedknives are manufactured from high carbon-boron alloy steel and then hardened to RC46-49 to match the temper of our reel blades and original equipment reels. Bedknives are surface ground on the top and front edge and straightened three times before being packaged with oil for rust prevention. All R&R Bedknives now have an increased front edge grind for added life. All R&R Bedknives are guaranteed against defects in material and workmanship under normal use for the life of the part.:*

4	<b>R120-1640</b>	120-1640	Bedknife - Low Cut Extended	1	
---	------------------	----------	-----------------------------	---	--

All original equipment manufacturers names and part numbers are used for identification purposes only, and we are in no way implying that our products are original equipment parts. Prices subject to change without notice.





## Replaces Toro Reelmaster 5510-D Parts

DPA Cutting Unit - Models 03638, 03639, 03641 & 03643  
Reel & Bedknife



Item No	R&R Part No.	OEM Part No.	Description	Qty Req	Order Quantity
---------	--------------	--------------	-------------	---------	----------------

*Detail Description: R&R Bedknives are manufactured from high carbon-boron alloy steel and then hardened to RC46-49 to match the temper of our reel blades and original equipment reels. Bedknives are surface ground on the top and front edge and straightened three times before being packaged with oil for rust prevention. All R&R Bedknives now have an increased front edge grind for added life. All R&R Bedknives are guaranteed against defects in material and workmanship under normal use for the life of the part.:*

### R&R Razor Tool Steel Bedknives, Lifetime Guaranteed

4	<b>R108-9095</b>	108-9095, 137-0833	Bedknife - Razor Tool Steel - 22 High Cut	1
---	------------------	-----------------------	--	---

*Detail Description: R&R Razor bedknives are manufactured from premium alloy tool steel steel and then hardened to RC48-51 to match the temper of our Razor reel blades and original equipment premium series reels. Bedknives are surface ground on the top and front edge and specially packaged for rust prevention. All R&R Bedknives now have an increased front edge grind for added life. All R&R Bedknives are guaranteed against defects in material and workmanship under normal use for the life of the part. You can expect up to double the life over standard bedknives.:*

4	<b>R119-4280</b>	119-4280	Bedknife - Razor Tool Steel - 22 x 3/8 Extended	1
---	------------------	----------	--	---

*Detail Description: R&R Razor bedknives are manufactured from premium alloy tool steel steel and then hardened to RC48-51 to match the temper of our Razor reel blades and original equipment premium series reels. Bedknives are surface ground on the top and front edge and specially packaged for rust prevention. All R&R Bedknives now have an increased front edge grind for added life. All R&R Bedknives are guaranteed against defects in material and workmanship under normal use for the life of the part. You can expect up to double the life over standard bedknives.:*

4	<b>R137-0832</b>	125-2771, 127-7132, 137-0832	Bedknife - Razor Tool Steel - 3/8 x 22 Lowcut	1
---	------------------	------------------------------------	--	---

### Overhaul Kits

5	<b>R120-7230</b>	120-7230	Overhaul Kit - Fits DPA Units	1
---	------------------	----------	-------------------------------	---

*Detail Description: Incl 2 ea.: R108-0015, R115-7039, R119-4155, R120-5116, R120-5118, R120-5120, R3296-33, R3296-48 & 4 ea: R106-5344:*

6	<b>R110-9600</b>	110-9600	High HOC Kit	1
---	------------------	----------	--------------	---

All original equipment manufacturers names and part numbers are used for identification purposes only, and we are in no way implying that our products are original equipment parts. Prices subject to change without notice.



## Replaces Toro Reelmaster 5510-D Parts

DPA Cutting Unit - Models 03638, 03639, 03641 & 03643  
Reel & Bedknife



Item No	R&R Part No.	OEM Part No.	Description	Qty Req	Order Quantity
---------	--------------	--------------	-------------	---------	----------------

*Detail Description: Includes 1 ea.: R120-0404, R120-0405 & 2 ea: R112-7451, R322-16, R445722 & 4 ea.: R106-9758, R104-8300, R453011, R104-8301 & 8 ea: R106-3925:*

### Other Parts Available

70	<b>R107-3273-01</b>	107-3273-01	Bed Bar - Fits OEM Units Only	1	
71	<b>R119-4151</b>	119-4151	Screw - Bedknife 5/16-18 x 17/32	8	
72	<b>R120-0404</b>	120-0404	Bracket- High HOC - LH	1	
<i>Detail Description: Fits 2011 &amp; Newer:</i>					
73	<b>R120-0405</b>	120-0405	Bracket - High HOC - RH	1	
<i>Detail Description: Fits 2011 &amp; Newer:</i>					
74	<b>R322-16</b>	322-16, Apr-00	Bolt - Hex HD 5/16-18 x 1-1/8	2	
75	<b>R127-4284</b>	127-4284	Washer - Special	2	

All original equipment manufacturers names and part numbers are used for identification purposes only, and we are in no way implying that our products are original equipment parts. Prices subject to change without notice.



## Replaces Toro Reelmaster 5510-D Parts

DPA Cutting Unit - Models 03638, 03639, 03641 & 03643  
Reel & Bedknife



Item No	R&R Part No.	OEM Part No.	Description	Qty Req	Order Quantity
76	R453011	01-166-0100, 01-166-0120, 01-166-0270, 01-166-0500, 01-166-0600, 01-166-0620, 132-4593, 2356-3, 237-12, 24-10-AD, 24-11-AD, 24-11-BD, 24-12-AD, 24-12-BD, 30-9310, 32-8190, 3256-24, 3256-3, 3256-36, 3256-4, 453011, 47-9950, 48-9220, 513458, 7-0052	Washer - Flat 3/8 SAE Y/Zinc	4	
77	R112-7451	100-9429, 112-7451	Bolt - Hex Tap 3/8-16 x 2-3/4	2	
78	R445722	30-8980, 32128-2, 32128-20, 32128-20	Nut - Serrated Washer	2	
79	R107-2996	107-2996	Grass Shield - Front	1	
80	R110-1706	110-1706	Deflector	5	
81	R151064	127-7118	Plug - Rubber - Fits R&R Reel Shaft Only	2	
82	R107-7773	107-7773	Bolt - Soc HD Cap 5/16-18 x 2-1/2	1	
83	R127-7109	127-7109	Insert-Threaded - 7 in Reel (RH)	1	

All original equipment manufacturers names and part numbers are used for identification purposes only, and we are in no way implying that our products are original equipment parts. Prices subject to change without notice.



## Replaces Toro Reelmaster 5510-D Parts

DPA Cutting Unit - Models 03638, 03639, 03641 & 03643  
Reel & Bedknife



Item No	R&R Part No.	OEM Part No.	Description	Qty Req	Order Quantity
84	<b>R127-7111</b>	127-7111	Insert-Threaded - 7 in Reel (LH)	1	
85	<b>R115-3299</b>	115-3299	Seal- Flocked	2	
86	<b>R106-3924</b>	106-3924	Bracket - Rear Roller	2	
87	<b>R115-2007</b>	107-7437, 115-2007	Rod - Spring	1	
88	<b>R110-4069</b>	110-4069	Bracket	1	
89	<b>R99-8662</b>	99-8662	Tube - Spring	1	
90	<b>R443818</b>	01-191-0813, 3218-18, 3218-5	Nut - 1/2-13 Hex Jam Zinc	3	
91	<b>R104-8301</b>	104-8301, 104-9301, 109-6658, 133-7570	Locknut - 3/8-16 Nylon Flanged	8	
92	<b>R3231-25</b>	01-173-0610, 30-9970, 3231-25, 3231-3, 900064P	Bolt - Carriage 3/8-16 x 1-1/4	4	
93	<b>R104-3396</b>	104-3396	Bolt - Hex HD 3/8-16 x 2-1/4	1	
94	<b>R120-5118</b>	120-5118	Shaft - Adjuster	2	
<i>Detail Description: 2012 &amp; Newer:</i>					
95	<b>R120-5116</b>	120-5116	Washer - Wave	2	
96	<b>R106-5344</b>	106-5344	Bushing - Flanged and Keyed	4	
97	<b>R108-0015</b>	108-0015	Washer - Flat	2	
98	<b>R3296-33</b>	3296-33	Locknut - 5/8-18 ESNA Jam	4	
99	<b>R115-7039</b>	115-7039	Screw - Adjuster - Bedbar	2	

All original equipment manufacturers names and part numbers are used for identification purposes only, and we are in no way implying that our products are original equipment parts. Prices subject to change without notice.





## Replaces Toro Reelmaster 5510-D Parts

DPA Cutting Unit - Models 03638, 03639, 03641 & 03643  
Reel & Bedknife



Item No	R&R Part No.	OEM Part No.	Description	Qty Req	Order Quantity
<b>Ser# 400000000-405699999</b>					
99	<b>R137-6130</b>	137-6130	Screw - Adjuster - Hardened - Bedbar	2	
<b>Ser# 405700000-410499999</b>					
100	<b>R119-4155</b>	119-4155	Washer - Hardened	2	
101	<b>R110-4079</b>	110-4079	Spring	1	
102	<b>R3296-48</b>	119-4039, 32146-7, 3296-34, 3296-48	Locknut - 7/16-14 ESNA	2	
103	<b>R99-2097</b>	99-2097	Detent - Bed Bar Adjuster	2	
104	<b>R110-4058</b>	110-4058	Bracket - Chain	1	
105	<b>R107-7400</b>	107-7400	Pin - Lynch	1	
106	<b>R92-2762</b>	92-2762	Pin - Snap	1	
107	<b>R56-9520</b>	56-9520	Bushing - Nyliner	2	
108	<b>R61-1950</b>	61-1950	Washer - Nylon - Bed Bar	4	
109	<b>R125-1978</b>	125-1978	Grass Shield - Rear	1	
110	<b>R106-9623</b>	106-9623	Bolt - Bedbar	2	
112	<b>R106-9618</b>	106-9618	Bushing - Rubber	2	
113	<b>R107-2979</b>	107-2979	Bolt - Shoulder	4	
114	<b>R92-2601</b>	92-2601	Snap Ring	2	
115	<b>R115-3296</b>	115-3296	Bearing	2	
<b>Ser# 400000000-410499999</b>					

All original equipment manufacturers names and part numbers are used for identification purposes only, and we are in no way implying that our products are original equipment parts. Prices subject to change without notice.



## Replaces Toro Reelmaster 5510-D Parts

DPA Cutting Unit - Models 03638, 03639, 03641 & 03643  
Reel & Bedknife



Item No	R&R Part No.	OEM Part No.	Description	Qty Req	Order Quantity
115	<b>R140-5510</b>	140-5510	Bearing - Sealed Stainless	2	
<b>Ser# 407900000-410499999</b>					
116	<b>R108-4279</b>	108-4279	Spacer - Frame	2	
117	<b>R93-2877</b>	93-2877	Bushing - Flanged	2	
118	<b>R237-68</b>	237-68	O-Ring	2	
119	<b>R87-7270-01</b>	87-7270	Washer - Flat 1/2	1	
120	<b>R104-8300</b>	104-8300, 104-8300 , 119-4041	Locknut - 5/16-18 Flanged Y/Zinc	4	
121	<b>R3230-30</b>	3230-30	Bolt - Carriage 5/16x4 1/2	4	
122	<b>R93-6688</b>	93-6688	Decal - Warning	1	
122	<b>R137-9706</b>	137-9706	Decal- Warning	1	
123	<b>R125-2796</b>	125-2796	Bracket- Front HOC	2	
<i>Detail Description: Fits 2013 &amp; Newer:</i>					
124	<b>R105-5700</b>	105-5700, 115-5258	Wave Washer - Bearing	2	
125	<b>R107-3258</b>	107-3258	Frame	1	
126	<b>R110-4088-03</b>	110-4088-03, 119-8010-03	Kickstand	1	
127	<b>R120-5120</b>	120-5120	Spring - Compression	2	
128	<b>R119-0626</b>	119-0626	Shim - Roller - 1/4 in - Slotted	8	
129	<b>R3231-4</b>	01-157-0440, 01-173-0612, 3231-4	Bolt - Carriage 3/8-16 x 1-1/2	2	

All original equipment manufacturers names and part numbers are used for identification purposes only, and we are in no way implying that our products are original equipment parts. Prices subject to change without notice.



## Replaces Toro Reelmaster 5510-D Parts

DPA Cutting Unit - Models 03638, 03639, 03641 & 03643  
Reel & Bedknife



Item No	R&R Part No.	OEM Part No.	Description	Qty Req	Order Quantity
130	<b>R32128-43</b>	30-8990, 32128-43, 3290-357	Nut - Flanged Whiz - 3/8-16	2	
130	<b>R3296-39</b>	32127-25, 32128-36, 3290-357, 3296-17, 3296-22, 3296-39, 915663P, 99-7443	Locknut - 3/8-16 Nylon	7	
131	<b>R107-7433</b>	107-7433	Carrier Frame Assy	1	
132	<b>R108-4284</b>	108-4284	Shaft - Support	1	
133	<b>R108-4269-01</b>	108-4269-01	Weight	1	
134	<b>R137-5967</b>	137-5967	Side Plate Assy - 7 in RH Aluminum	1	
135	<b>R137-5963</b>	137-5963, 137-5967	Side Plate Assy - 7 in LH Aluminum	1	
136	<b>R170714</b>	302-34, 302-39, 62-3520	Fitting - Pressure Relief	2	
137	<b>R117-8177</b>	117-8177	O-Ring	2	
138	<b>R130-8094</b>	130-8094	Washer	2	
139	<b>R67-9410</b>	67-9410	Washer - Clevis Pin	1	
140	<b>R322-14</b>	01-150-0830, 01-178-0524, 30-8900, 322-14	Bolt - Hex HD 5/16-18 x 3 GR5	1	
141	<b>R3256-74</b>	3256-74	Washer - Flat	1	
142	<b>R3234-19</b>	3234-19	Bolt - Hex Washer 3/8-16x1-3/4	2	

All original equipment manufacturers names and part numbers are used for identification purposes only, and we are in no way implying that our products are original equipment parts. Prices subject to change without notice.



## Replaces Toro Reelmaster 5510-D Parts

DPA Cutting Unit - Models 03638, 03639, 03641 & 03643  
Reel & Bedknife



Item No	R&R Part No.	OEM Part No.	Description	Qty Req	Order Quantity
143	<b>R114-9396</b>	114-9396, 119-4067	Bolt - Hex HD 5/16-18 x 3/8	2	
144	<b>R3234-7</b>	3234-7	Bolt - Hex Washer HD 5/16-18 x 5/8	4	
145	<b>R101526</b>	01-150-0970, 01-178-0620, 20-53-AGD, 321-11, 3224-8, 323-11, 323-12, 323-31, 323-4, 323-47	Bolt - Hex HD 3/8-16 x 2-1/2 GR5	10	
146	<b>R323-6</b>	01-150-0010, 01-178-0608, 20-47-AD, 20-47-AGD, 3224-2, 323-6, 49-3510, 908034P, 908332	Bolt - Hex HD 3/8-16 x 1 GR5 YZ	2	
147	<b>R3245-35</b>	3245-35	Screw - Set 1/4-28 x 1/4	2	
148	<b>R3256-26</b>	01-166-0540, 01-166-0820, 17-2530, 24-13-BD, 30-8570, 3256-26, 356206, 48-9390	Washer - 1/2 in	2	

All original equipment manufacturers names and part numbers are used for identification purposes only, and we are in no way implying that our products are original equipment parts. Prices subject to change without notice.



## Replaces Toro Reelmaster 5510-D Parts

*DPA Cutting Unit - Models 03638, 03639, 03641 & 03643  
Reel & Bedknife*



Item No	R&R Part No.	OEM Part No.	Description	Qty Req	Order Quantity
148	R453017	01-166-0050, 01-166-0240, 01-166-0800, 24-13-AD, 24-14-AD, 32-8110, 3256-26, 3256-6, 453017, 69-8980, 87-7270	Washer - Flat 1/2	2	

All original equipment manufacturers names and part numbers are used for identification purposes only, and we are in no way implying that our products are original equipment parts. Prices subject to change without notice.