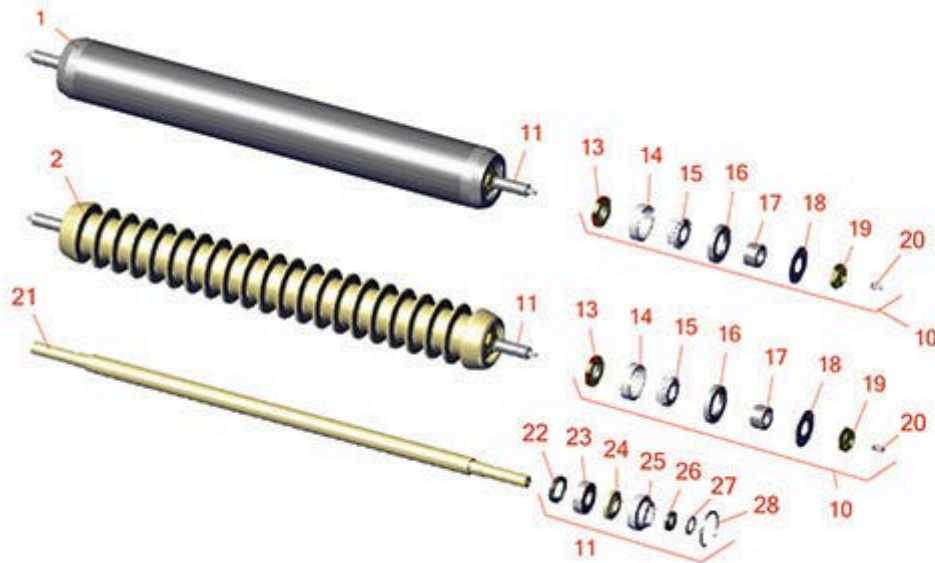




Replaces Toro Reelmaster 6500D Parts

Cutting Unit - Models 03860, 03861 & 03862
Rollers



All original equipment manufacturers names and part numbers are used for identification purposes only, and we are in no way implying that our products are original equipment parts. Prices subject to change without notice.



Replaces Toro Reelmaster 6500D Parts

Cutting Unit - Models 03860, 03861 & 03862
Rollers



| Item No | R&R Part No. | OEM Part No. | Description | Qty Req | Order Quantity |
|---------|--------------|--------------|-------------|---------|----------------|
|---------|--------------|--------------|-------------|---------|----------------|

R&R Rollers

| | | | | | |
|---|----------------|---------|--|---|--|
| 1 | R150728 | 99-5749 | Roller - Smooth Heavy Duty Tubular Steel | 0 | |
|---|----------------|---------|--|---|--|

Detail Description: Constructed with a through shaft, this heavy duty roller uses tapered bearings for extended life. Shaft length measures 26-3/4".:

| | | | | | |
|---|----------------|----------|-----------------------------|---|--|
| 2 | R150730 | 100-9906 | Roller - Grooved Cast Steel | 0 | |
|---|----------------|----------|-----------------------------|---|--|

Detail Description: Constructed with cast steel body and a through shaft. This heavy duty roller uses tapered roller bearings for extended life. Shaft length measures 26-3/4".:

Overhaul Kits

| | | | | | |
|----|----------------|--------|-----------------------|---|--|
| 10 | R100141 | 100141 | Overhaul Kit - Roller | 1 | |
|----|----------------|--------|-----------------------|---|--|

Detail Description: Includes 2 ea: R253-117 Seals, R253-152 Seals, R254-78 Bearings, R254-79 Cups, R302-5 Grease Fittings, R3296-15 Locknuts, R5-4038 Wear Sleeves, R150504 Washers:

| | | | | | |
|----|------------------|----------|-----------------------|---|--|
| 11 | R106-9606 | 106-9606 | Overhaul Kit - Roller | 1 | |
|----|------------------|----------|-----------------------|---|--|

Detail Description: Include 2 ea: R343667 Bearings, R253-70 Seals, R32120-62 Retaining Rings, R93-1251 Seals, R93-1252 Seals, R93-2931 Washers, R93-3007 Seals:

Other Parts Available

| | | | | | |
|----|----------------|--|----------------|---|--|
| 11 | R150729 | | Shaft - Roller | 1 | |
|----|----------------|--|----------------|---|--|

| | | | | | |
|----|-----------------|---------------------|---------------------|---|--|
| 13 | R253-152 | 253-116, 253-152 | Seal - Inner Roller | 2 | |
|----|-----------------|---------------------|---------------------|---|--|

| | | | | | |
|----|----------------|---|---------------|---|--|
| 14 | R254-79 | 01-103-0060, 01-103-0130, 1-633584, 252-106, 254-79, 32-7800, 32-9590 | Cup - Bearing | 2 | |
|----|----------------|---|---------------|---|--|

Detail Description: Use R254-79M installation mandrel to properly install race.:

All original equipment manufacturers names and part numbers are used for identification purposes only, and we are in no way implying that our products are original equipment parts. Prices subject to change without notice.



Replaces Toro Reelmaster 6500D Parts

Cutting Unit - Models 03860, 03861 & 03862
Rollers



| Item No | R&R Part No. | OEM Part No. | Description | Qty Req | Order Quantity |
|---------|--------------|--|----------------------------|---------|----------------|
| 15 | R254-78 | 01-102-0060, 01-102-0130, 1-633585, 254-78, 32-7790, 32-9580, 93-4813 | Tapered Bearing Cone | 2 | |
| 16 | R253-117 | 253-117, 253-165 | Seal - Outer Triple Lip | 2 | |
| 17 | R5-4038 | 5-4038, 51-2420 | Sleeve - Wear Reel Shaft | 2 | |
| 18 | R150504 | 66-5620 | Washer | 2 | |
| 19 | R3296-15 | 116-7306, 32118-5, 32127-23, 32127-47, 3296-15 | Locknut - 3/4-16 Nylon Jam | 5 | |
| 20 | R302-5 | 21-6010, 302-11, 302-37, 302-47, 302-5, 302-57, 302-58, 302-6, 31-0300, 32-9660, 60-0800, 62-3880, 92-4181 | Fitting - Grease | 2 | |
| 21 | R99-5748 | 99-5748 | Shaft - Roller | 1 | |
| 22 | R93-3007 | 93-3007 | Seal | 2 | |
| 23 | R343667 | 109966, 251-6, 38-7820 | Bearing - Ball | 2 | |
| 24 | R93-1251 | 93-1251 | Seal | 2 | |

All original equipment manufacturers names and part numbers are used for identification purposes only, and we are in no way implying that our products are original equipment parts. Prices subject to change without notice.



Replaces Toro Reelmaster 6500D Parts

*Cutting Unit - Models 03860, 03861 & 03862
Rollers*



| Item No | R&R Part No. | OEM Part No. | Description | Qty Req | Order Quantity |
|---------|------------------|--------------|----------------------|---------|----------------|
| 25 | R93-1252 | 93-1252 | Seal - Outer | 2 | |
| 26 | R253-70 | 253-70 | Seal | 2 | |
| 27 | R93-2931 | 93-2931 | Washer - Roller Seal | 2 | |
| 28 | R32120-62 | 32120-62 | Ring - Retaining | 2 | |

All original equipment manufacturers names and part numbers are used for identification purposes only, and we are in no way implying that our products are original equipment parts. Prices subject to change without notice.