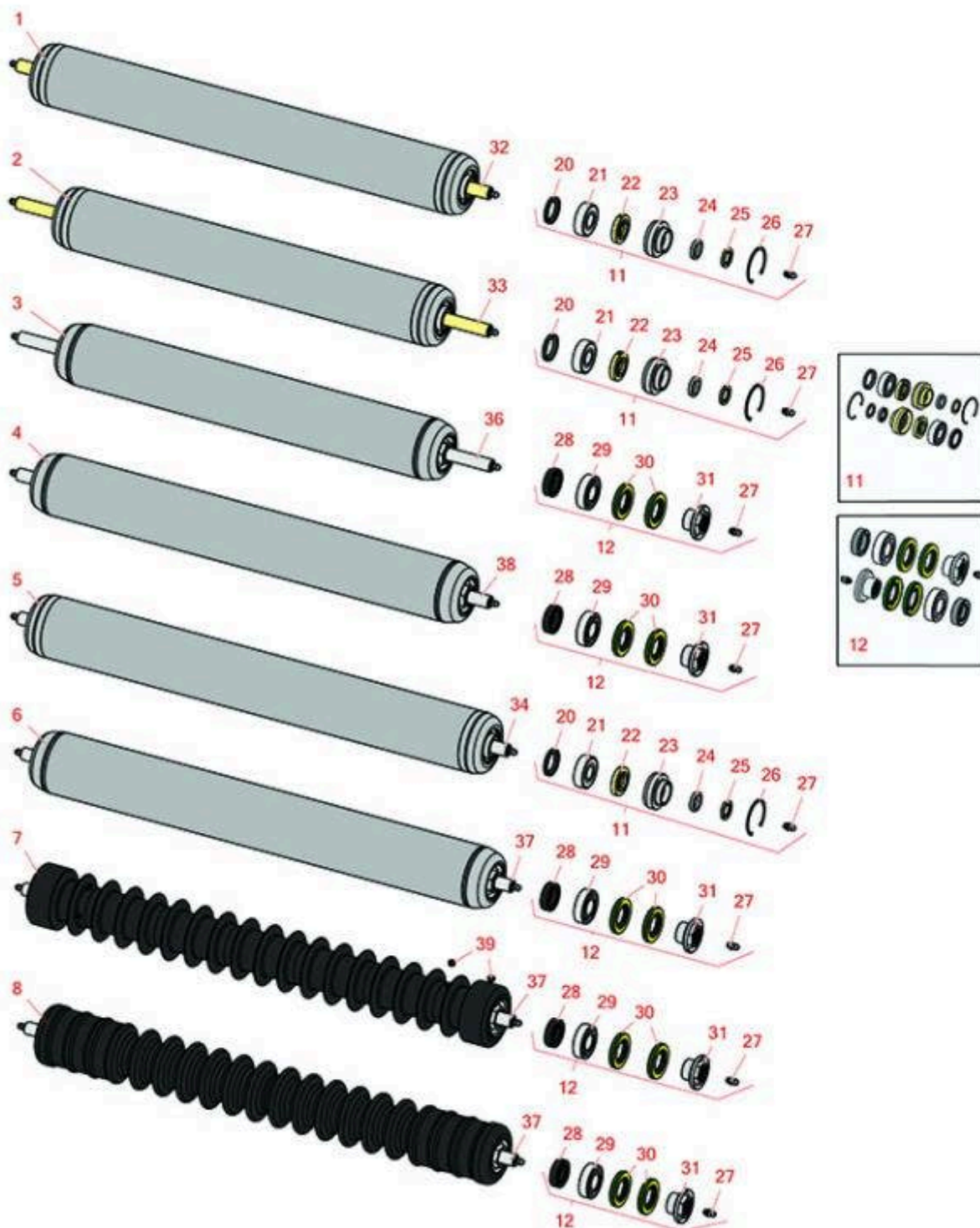




Replaces Toro Reelmaster 6500D Parts

DPA Cutting Unit - Models 03863 & 03864

Rollers



All original equipment manufacturers names and part numbers are used for identification purposes only, and we are in no way implying that our products are original equipment parts. Prices subject to change without notice.



Replaces Toro Reelmaster 6500D Parts

DPA Cutting Unit - Models 03863 & 03864
Rollers



Item No	R&R Part No.	OEM Part No.	Description	Qty Req	Order Quantity
R&R Rollers					
1	R107-4024	107-4024	Smooth Tubular Steel Roller - Long	1	
<i>Detail Description: Constructed with a through shaft, this heavy-duty roller uses greasable ball bearings. (2006 - 2007):</i>					
2	R110-4065	110-4065	Roller - Smooth Tubular Steel	1	
<i>Detail Description: Constructed with a through shaft, this heavy-duty roller uses greasable ball bearings. (2006 - 2007):</i>					
3	R114-5417	114-5417	Roller - Smooth Solid Steel	1	
<i>Detail Description: Constructed with a through shaft, this heavy-duty roller uses greasable stainless ball bearings. (2008 & Up):</i>					
4	R114-5415	114-5415	Roller - Smooth Tubular Steel	1	
<i>Detail Description: Constructed with a through shaft, this heavy duty roller uses greasable stainless ball bearings. (2008 & Up):</i>					
5	R110-9605	110-9605	Roller - Smooth Tubular Steel	1	
<i>Detail Description: Constructed with a through shaft, this heavy-duty roller uses greasable ball bearings. (2006 - 2007):</i>					
6	R114-5412	114-5412	Roller - Smooth Tubular Steel	1	
<i>Detail Description: Constructed with a through shaft, this heavy-duty roller uses greasable stainless ball bearings. (2008 & Up):</i>					
7	R1503911	110-4050, 114-5400, 114-5421	Roller - Fusion Grooved UHMW Polyethylene	1	
<i>Detail Description: Fusion Rollers combine the best features of our UHMW plastic rollers with a heavy-duty internal bearing system. Machined from solid UHMW plastic that prevents build-up of debris. This roller has a patented deep groove design and turns on precision stainless ball bearings and double seals for added life. (2006 & Up):</i>					
8	R1503915	110-9608, 114-5421	Roller - Fusion Grooved UHMW Polyethylene Shoulder	1	

All original equipment manufacturers names and part numbers are used for identification purposes only, and we are in no way implying that our products are original equipment parts. Prices subject to change without notice.



Replaces Toro Reelmaster 6500D Parts

DPA Cutting Unit - Models 03863 & 03864
Rollers



Item No	R&R Part No.	OEM Part No.	Description	Qty Req	Order Quantity
---------	--------------	--------------	-------------	---------	----------------

Detail Description: Fusion Rollers combine the best features of our UHMW plastic rollers with a heavy duty internal bearing system. Machined from solid UHMW plastic that prevents build-up of debris. This roller has a patented deep groove design in the center along with shallow grooves on each end to reduce marking in wet conditions and turns on precision stainless ball bearings and double seals for added life.:

Overhaul Kits

11	R106-9606	106-9606	Overhaul Kit - Roller	1	
----	------------------	----------	-----------------------	---	--

Detail Description: Include 2 ea: R343667 Bearings, R253-70 Seals, R32120-62 Retaining Rings, R93-1251 Seals, R93-1252 Seals, R93-2931 Washers, R93-3007 Seals:

12	R114-5430	114-5430	Overhaul Kit - Roller	1	
----	------------------	----------	-----------------------	---	--

Detail Description: Includes 4 ea.: R112-7494 Seals; 2 ea.: R302-5 Grease Zerks, R114-3717 Seals, R112-5290 Bearings & R114-3745 Locknuts:

Other Parts Available

20	R93-3007	93-3007	Seal	2	
----	-----------------	---------	------	---	--

21	R343667	109966, 251-6, 38-7820	Bearing - Ball	2	
----	----------------	------------------------------	----------------	---	--

22	R93-1251	93-1251	Seal	2	
----	-----------------	---------	------	---	--

23	R93-1252	93-1252	Seal - Outer	2	
----	-----------------	---------	--------------	---	--

24	R253-70	253-70	Seal	2	
----	----------------	--------	------	---	--

25	R93-2931	93-2931	Washer - Roller Seal	2	
----	-----------------	---------	----------------------	---	--

26	R32120-62	32120-62	Ring - Retaining	2	
----	------------------	----------	------------------	---	--

All original equipment manufacturers names and part numbers are used for identification purposes only, and we are in no way implying that our products are original equipment parts. Prices subject to change without notice.



Replaces Toro Reelmaster 6500D Parts

DPA Cutting Unit - Models 03863 & 03864
Rollers



Item No	R&R Part No.	OEM Part No.	Description	Qty Req	Order Quantity
27	R302-5	21-6010, 302-11, 302-37, 302-47, 302-5, 302-57, 302-58, 302-6, 31-0300, 32-9660, 60-0800, 62-3880, 92-4181	Fitting - Grease	2	
28	R114-3717	114-3717	Seal	2	
29	R112-5290	112-5290, 251--346, 251-346, 72-5430	Bearing - Stainless	2	
30	R112-7494	112-7494	Seal	4	
31	R114-3745	106-6939, 108-3151, 114-3745, 114-5411	Locknut - Bearing - Stainless	2	
32	R107-3296	107-3296, 99-5717	Shaft - Rear Long Roller	1	
33	R110-4060	110-4060	Shaft	1	
34	R110-4053	110-4053	Shaft - Front Roller	1	
36	R114-5410	114-5410	Shaft - Short - Rear Roller	1	
37	R114-5403	114-5403	Shaft - Front Roller	1	
38	R114-5407	114-5407	Shaft - Long Rear Roller	1	
39	R300106	104-1835, 300106	Screw - Set 5/16-18 x 1/4	4	

All original equipment manufacturers names and part numbers are used for identification purposes only, and we are in no way implying that our products are original equipment parts. Prices subject to change without notice.